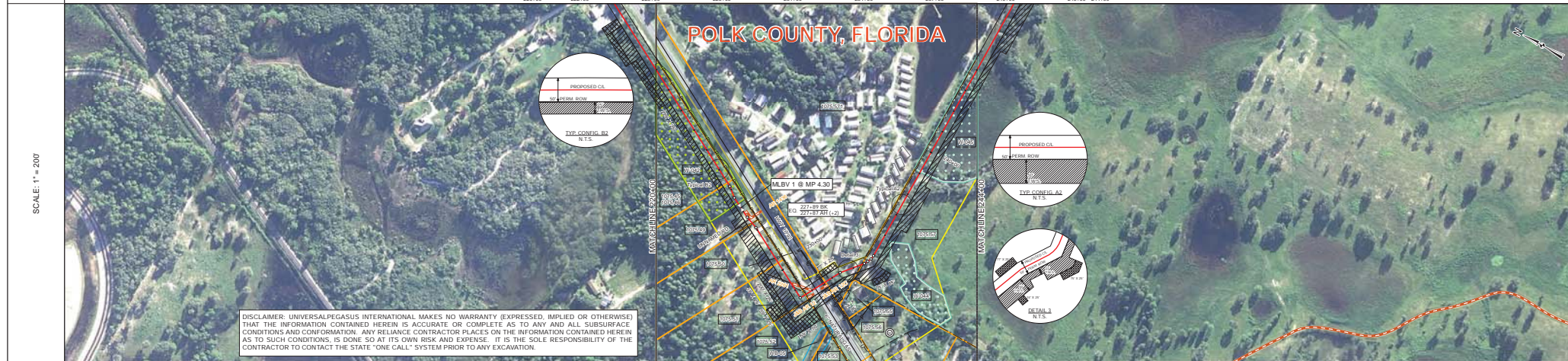
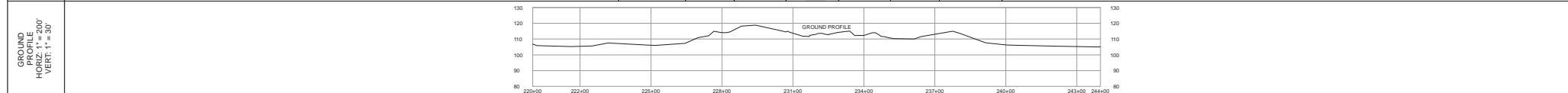


TRACT	1075.45, 1075.46 DANPOL INVESTMENTS INC. 865 FT 220+00 TO 225+65	1075.49 BRENBUS, LLC 225+65 TO 227+67	1075.50 WILEY U. PRIDGEN 227+67 TO 229+65	1075.51 WILEY U. PRIDGEN 229+65 TO 231+65	1075.52 FOOT 231+65 TO 233+65	1075.571 NHC-FL126, LLC 153 FT 232+65 TO 234+38	1075.57 STANDARD SAND AND SILICA COMPANY 362 FT 234+38 TO 244+00	MATCHLINE 244+00
-------	--	---------------------------------------	---	---	-------------------------------	---	--	------------------



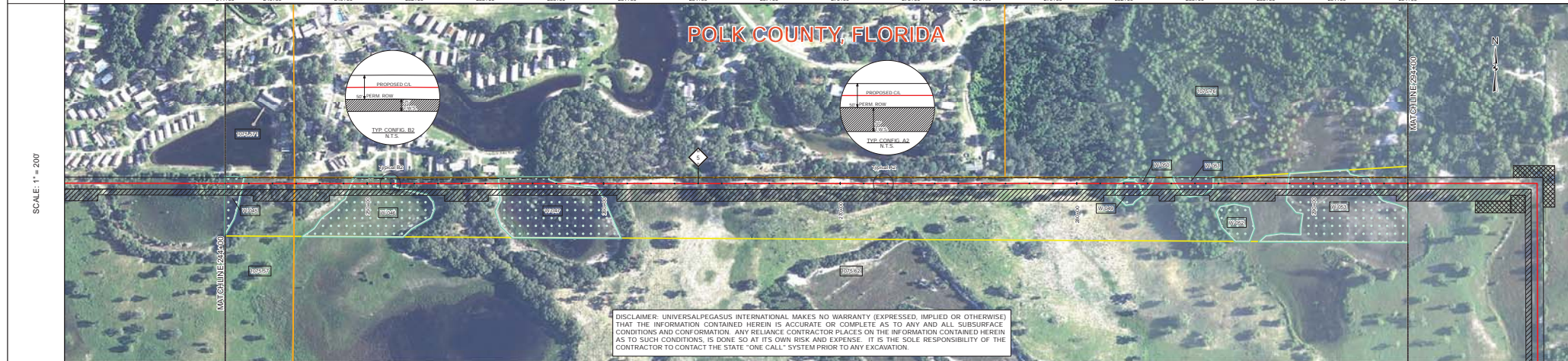
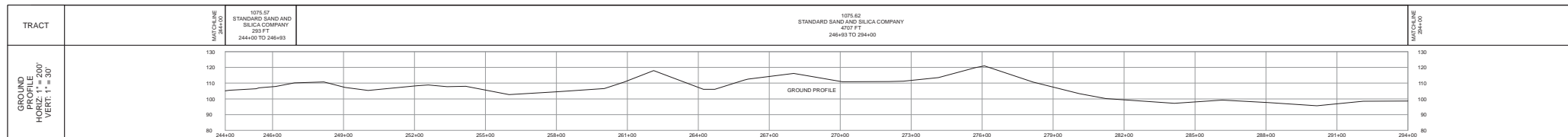
DISCLAIMER: UNIVERSALPEGASUS INTERNATIONAL MAKES NO WARRANTY (EXPRESSED, IMPLIED OR OTHERWISE) THAT THE INFORMATION CONTAINED HEREIN IS ACCURATE OR COMPLETE AS TO ANY AND ALL SUBSURFACE CONDITIONS AND CONFORMATION. ANY RELIANCE CONTRACTOR PLACES ON THE INFORMATION CONTAINED HEREIN AS TO SUCH CONDITIONS, IS DONE SO AT ITS OWN RISK AND EXPENSE. IT IS THE SOLE RESPONSIBILITY OF THE CONTRACTOR TO CONTACT THE STATE "ONE CALL" SYSTEM PRIOR TO ANY EXCAVATION.

SURVEY DATA	STATIONING	MATCHLINE 220+00	MATCHLINE 244+00
-------------	------------	------------------	------------------

ENGINEERING DATA	REFERENCE DRAWING	CLASS LOCATION	MINIMUM DEPTH OF COVER	CLASSIFICATION, CATHODIC PROTECTION
21040-510-TYP-00010	21040-510-TYP-00010	3'	SEE REF DRWG	3'

ENVIRONMENTAL DATA	W/300'	W/300'
PERMITTING	EROSION CONTROL CODE	EROSION CONTROL
SPECIAL CONDITIONS	CONSTRAINT 3	CONSTRAINT 4

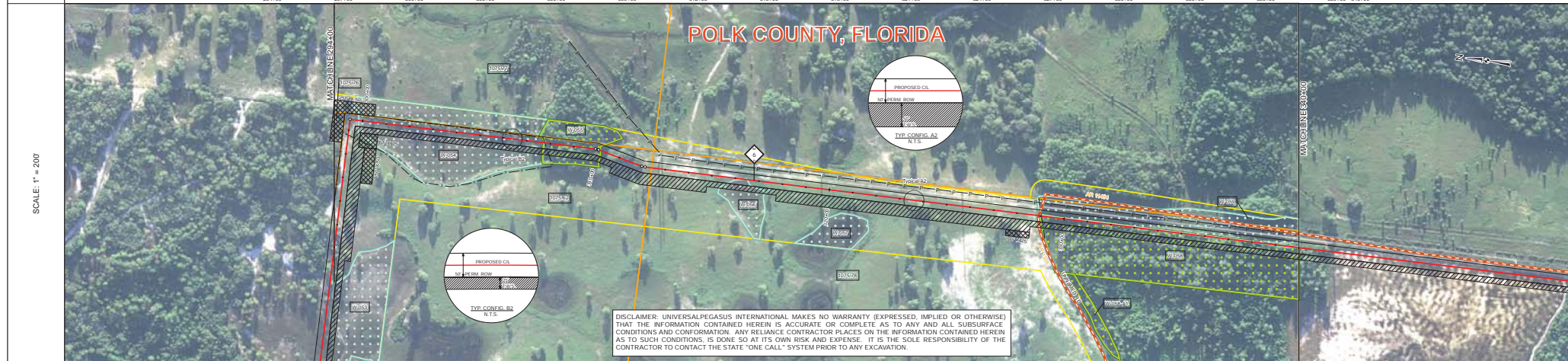
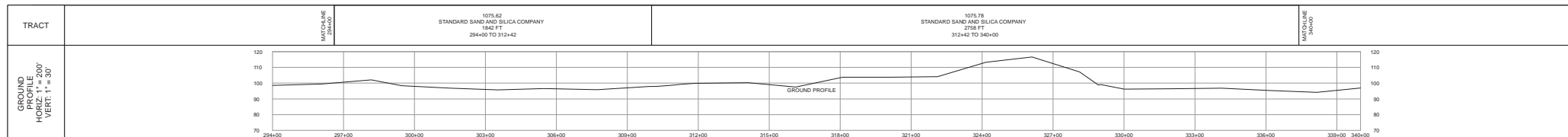
BILL OF MATERIALS		MISCELLANEOUS MATERIALS		TYPICAL DRAWINGS		GENERAL INFORMATION		LEGEND		REVISIONS		APPROVALS					
ITEM NO.	QTY	UOM	REIN. MATERIAL NUMBER	DESCRIPTION	QTY	UOM	REIN. MATERIAL NUMBER	DESCRIPTION	NO.	DESCRIPTION	DATE	REV. BY	CRK. BY	CHK. BY	DRAWN BY	MB	CONSTRUCTION PERMIT NO.
1	132	FT		36" O.D. x 0.750" W.T. - API 5L X70 PSL2 DSAW, 14-16 MILS FBE & 24-30 MILS ARO	41	EA		SET ON WEIGHTS	1	MINIMUM DEPTH OF COVER FOR THE PROJECT IS 36 INCHES. ADDITIONAL DEPTH OF COVER IS REQUIRED FOR ROAD AND WATERBODY CROSSINGS, AND IS TO BE IN ACCORDANCE WITH REFERENCED PERMIT DRAWINGS, SITE SPECIFIC DRAWINGS OR CONSTRUCTION SPECIFICATIONS, WHICHEVER IS MORE STRINGENT.	2016-04-08	MB	MJ	RG	MJ	RG	MAINTENANCE OPERATION REGION
2	220	FT		36" O.D. x 0.750" W.T. - API 5L X70 PSL2 DSAW, 14-16 MILS FBE	2	EA		PIPELINE MARKERS	2	THE BOUNDARIES OF ALL WORK AREAS WILL BE CLEARLY MARKED AND ALL WORK SHALL REMAIN WITHIN THE DESIGNATED WORK AREA.	2015-12-15	MB	MJ	RG	MJ	RG	MIN. TEST PRESSURE 1816 PSI
FITTINGS SUMMARY		CONTINUOUS CONCRETE COATING		PIPE COATING DATA		SPECIAL NOTES		ENVIRONMENTAL DATA		APPROVAL		UNIVERSALPEGASUS INTERNATIONAL		FLORIDA SOUTHEAST CONNECTION		FLORIDA SOUTHEAST CONNECTION PROJECT	
ITEM NO.	QTY	UOM	REIN. MATERIAL NUMBER	DESCRIPTION	ITEM NO.	QTY	UOM	REIN. MATERIAL NUMBER	DESCRIPTION	1	INDUCTION BEND QUANTITIES ALONG WITH THEIR DESCRIPTIONS ARE LOCATED ON DRAWING 21040-510-SS-00001.	APPROVAL		UNIVERSALPEGASUS INTERNATIONAL		FLORIDA SOUTHEAST CONNECTION PROJECT	
1	1	EA		90° 3R HORIZONTAL FITTING	1	EA				2	SEE AER. DRAWING PACKAGE FOR ANODE BED DEEP WELL.	APPROVAL		UNIVERSALPEGASUS INTERNATIONAL		FLORIDA SOUTHEAST CONNECTION PROJECT	
PIPE ASSEMBLIES		PIPE COATING DATA		PIPE COATING DATA		SPECIAL NOTES		ENVIRONMENTAL DATA		APPROVAL		UNIVERSALPEGASUS INTERNATIONAL		FLORIDA SOUTHEAST CONNECTION		FLORIDA SOUTHEAST CONNECTION PROJECT	
QTY	UOM	DESCRIPTION	PIPE COATING: 14 MIL MINIMUM FBE AND 24 MIL MINIMUM ARO	21040-510-TYP-20118	21040-510-TYP-20117	SPECIAL NOTES		ENVIRONMENTAL DATA		APPROVAL		UNIVERSALPEGASUS INTERNATIONAL		FLORIDA SOUTHEAST CONNECTION		FLORIDA SOUTHEAST CONNECTION PROJECT	
1	EA	MLBV 1 (201)	SURFACE WELD COATING: 2 PART EPOXY	21040-510-TYP-20116	21040-510-TYP-20115	SPECIAL NOTES		ENVIRONMENTAL DATA		APPROVAL		UNIVERSALPEGASUS INTERNATIONAL		FLORIDA SOUTHEAST CONNECTION		FLORIDA SOUTHEAST CONNECTION PROJECT	
		INTERNAL COATING (YES/NO): NO		21040-510-TYP-20114	21040-510-TYP-20113	SPECIAL NOTES		ENVIRONMENTAL DATA		APPROVAL		UNIVERSALPEGASUS INTERNATIONAL		FLORIDA SOUTHEAST CONNECTION		FLORIDA SOUTHEAST CONNECTION PROJECT	
				21040-510-TYP-20113	21040-510-TYP-20112	SPECIAL NOTES		ENVIRONMENTAL DATA		APPROVAL		UNIVERSALPEGASUS INTERNATIONAL		FLORIDA SOUTHEAST CONNECTION		FLORIDA SOUTHEAST CONNECTION PROJECT	
				21040-510-TYP-20112	21040-510-TYP-20111	SPECIAL NOTES		ENVIRONMENTAL DATA		APPROVAL		UNIVERSALPEGASUS INTERNATIONAL		FLORIDA SOUTHEAST CONNECTION		FLORIDA SOUTHEAST CONNECTION PROJECT	
				21040-510-TYP-20111	21040-510-TYP-20110	SPECIAL NOTES		ENVIRONMENTAL DATA		APPROVAL		UNIVERSALPEGASUS INTERNATIONAL		FLORIDA SOUTHEAST CONNECTION		FLORIDA SOUTHEAST CONNECTION PROJECT	
				21040-510-TYP-20110	21040-510-TYP-20109	SPECIAL NOTES		ENVIRONMENTAL DATA		APPROVAL		UNIVERSALPEGASUS INTERNATIONAL		FLORIDA SOUTHEAST CONNECTION		FLORIDA SOUTHEAST CONNECTION PROJECT	
				21040-510-TYP-20109	21040-510-TYP-20108	SPECIAL NOTES		ENVIRONMENTAL DATA		APPROVAL		UNIVERSALPEGASUS INTERNATIONAL		FLORIDA SOUTHEAST CONNECTION		FLORIDA SOUTHEAST CONNECTION PROJECT	
				21040-510-TYP-20108	21040-510-TYP-20107	SPECIAL NOTES		ENVIRONMENTAL DATA		APPROVAL		UNIVERSALPEGASUS INTERNATIONAL		FLORIDA SOUTHEAST CONNECTION		FLORIDA SOUTHEAST CONNECTION PROJECT	
				21040-510-TYP-20107	21040-510-TYP-20106	SPECIAL NOTES		ENVIRONMENTAL DATA		APPROVAL		UNIVERSALPEGASUS INTERNATIONAL		FLORIDA SOUTHEAST CONNECTION		FLORIDA SOUTHEAST CONNECTION PROJECT	
				21040-510-TYP-20106	21040-510-TYP-20105	SPECIAL NOTES		ENVIRONMENTAL DATA		APPROVAL		UNIVERSALPEGASUS INTERNATIONAL		FLORIDA SOUTHEAST CONNECTION		FLORIDA SOUTHEAST CONNECTION PROJECT	
				21040-510-TYP-20105	21040-510-TYP-20104	SPECIAL NOTES		ENVIRONMENTAL DATA		APPROVAL		UNIVERSALPEGASUS INTERNATIONAL		FLORIDA SOUTHEAST CONNECTION		FLORIDA SOUTHEAST CONNECTION PROJECT	
				21040-510-TYP-20104	21040-510-TYP-20103	SPECIAL NOTES		ENVIRONMENTAL DATA		APPROVAL		UNIVERSALPEGASUS INTERNATIONAL		FLORIDA SOUTHEAST CONNECTION		FLORIDA SOUTHEAST CONNECTION PROJECT	
				21040-510-TYP-20103	21040-510-TYP-20102	SPECIAL NOTES		ENVIRONMENTAL DATA		APPROVAL		UNIVERSALPEGASUS INTERNATIONAL		FLORIDA SOUTHEAST CONNECTION		FLORIDA SOUTHEAST CONNECTION PROJECT	
				21040-510-TYP-20102	21040-510-TYP-20101	SPECIAL NOTES		ENVIRONMENTAL DATA		APPROVAL		UNIVERSALPEGASUS INTERNATIONAL		FLORIDA SOUTHEAST CONNECTION		FLORIDA SOUTHEAST CONNECTION PROJECT	
				21040-510-TYP-20101	21040-510-TYP-20100	SPECIAL NOTES		ENVIRONMENTAL DATA		APPROVAL		UNIVERSALPEGASUS INTERNATIONAL		FLORIDA SOUTHEAST CONNECTION		FLORIDA SOUTHEAST CONNECTION PROJECT	



SURVEY DATA		STATIONING	
MATCHLINE 244+00		MATCHLINE 284+00	
ENGINEERING DATA		MATERIAL	
REFERENCE DRAWING		11-9622 SBW 13.5 CC	
CLASS LOCATION		23-9622 SBW 13.5 CC	
MINIMUM DEPTH OF COVER		26-9622 SBW 13.5 CC	
CATHODIC PROTECTION		30-9622 SBW 13.5 CC	
ENVIRONMENTAL DATA		STATIONS	
WATERBODIES/WETLAND CROSSINGS		244+10	
WATERBODIES/WETLANDS		244+13	
PERMANENT BROWN CONTROL		244+18	
TOPSOIL SALVAGE		244+19	
THREATENED AND ENDANGERED SPECIES		244+27	
TRAILING CONSTRAINT		244+28	
CONSTRAINT #1		244+35	
CONSTRAINT #2		244+42	
CONSTRAINT #3		244+44	
CONSTRAINT #4		244+44	
CONSTRAINT #5		244+44	
CONSTRAINT #6		244+44	
CONSTRAINT #7		244+44	
CONSTRAINT #8		244+44	
CONSTRAINT #9		244+44	
CONSTRAINT #10		244+44	
CONSTRAINT #11		244+44	
CONSTRAINT #12		244+44	
CONSTRAINT #13		244+44	
CONSTRAINT #14		244+44	
CONSTRAINT #15		244+44	
CONSTRAINT #16		244+44	
CONSTRAINT #17		244+44	
CONSTRAINT #18		244+44	
CONSTRAINT #19		244+44	
CONSTRAINT #20		244+44	
CONSTRAINT #21		244+44	
CONSTRAINT #22		244+44	
CONSTRAINT #23		244+44	
CONSTRAINT #24		244+44	
CONSTRAINT #25		244+44	
CONSTRAINT #26		244+44	
CONSTRAINT #27		244+44	
CONSTRAINT #28		244+44	
CONSTRAINT #29		244+44	
CONSTRAINT #30		244+44	
CONSTRAINT #31		244+44	
CONSTRAINT #32		244+44	
CONSTRAINT #33		244+44	
CONSTRAINT #34		244+44	
CONSTRAINT #35		244+44	
CONSTRAINT #36		244+44	
CONSTRAINT #37		244+44	
CONSTRAINT #38		244+44	
CONSTRAINT #39		244+44	
CONSTRAINT #40		244+44	
CONSTRAINT #41		244+44	
CONSTRAINT #42		244+44	
CONSTRAINT #43		244+44	
CONSTRAINT #44		244+44	
CONSTRAINT #45		244+44	
CONSTRAINT #46		244+44	
CONSTRAINT #47		244+44	
CONSTRAINT #48		244+44	
CONSTRAINT #49		244+44	
CONSTRAINT #50		244+44	
CONSTRAINT #51		244+44	
CONSTRAINT #52		244+44	
CONSTRAINT #53		244+44	
CONSTRAINT #54		244+44	
CONSTRAINT #55		244+44	
CONSTRAINT #56		244+44	
CONSTRAINT #57		244+44	
CONSTRAINT #58		244+44	
CONSTRAINT #59		244+44	
CONSTRAINT #60		244+44	
CONSTRAINT #61		244+44	
CONSTRAINT #62		244+44	
CONSTRAINT #63		244+44	
CONSTRAINT #64		244+44	
CONSTRAINT #65		244+44	
CONSTRAINT #66		244+44	
CONSTRAINT #67		244+44	
CONSTRAINT #68		244+44	
CONSTRAINT #69		244+44	
CONSTRAINT #70		244+44	
CONSTRAINT #71		244+44	
CONSTRAINT #72		244+44	
CONSTRAINT #73		244+44	
CONSTRAINT #74		244+44	
CONSTRAINT #75		244+44	
CONSTRAINT #76		244+44	
CONSTRAINT #77		244+44	
CONSTRAINT #78		244+44	
CONSTRAINT #79		244+44	
CONSTRAINT #80		244+44	
CONSTRAINT #81		244+44	
CONSTRAINT #82		244+44	
CONSTRAINT #83		244+44	
CONSTRAINT #84		244+44	
CONSTRAINT #85		244+44	
CONSTRAINT #86		244+44	
CONSTRAINT #87		244+44	
CONSTRAINT #88		244+44	
CONSTRAINT #89		244+44	
CONSTRAINT #90		244+44	
CONSTRAINT #91		244+44	
CONSTRAINT #92		244+44	
CONSTRAINT #93		244+44	
CONSTRAINT #94		244+44	
CONSTRAINT #95		244+44	
CONSTRAINT #96		244+44	
CONSTRAINT #97		244+44	
CONSTRAINT #98		244+44	
CONSTRAINT #99		244+44	
CONSTRAINT #100		244+44	

BILL OF MATERIALS				MISCELLANEOUS MATERIALS				TYPICAL DRAWINGS				GENERAL INFORMATION								
ITEM NO.	QTY	UOM	DESCRIPTION	QTY	UOM	DESCRIPTION	DWG/FIELD BOOK NO.	TITLE	1.	THE MINIMUM DEPTH OF COVER FOR THE PROJECT IS 36 INCHES. ADDITIONAL DEPTH OF COVER IS REQUIRED FOR ROAD AND WATERBODY CROSSINGS, AND IS TO BE IN ACCORDANCE WITH REFERENCED PERMIT DRAWINGS, SITE SPECIFIC DRAWINGS, OR CONSTRUCTION SPECIFICATIONS, WHICHEVER IS MORE STRINGENT.	2.	THE BOUNDARIES OF ALL WORK AREAS WILL BE CLEARLY MARKED AND ALL WORK SHALL REMAIN WITHIN THE DESIGNATED WORK AREA.	3.	THE REQUIRED STATE ONE CALL NOTIFICATION IS THE RESPONSIBILITY OF THE CONSTRUCTION CONTRACTOR.	4.	THE CONTRACTOR SHALL ACCESS THE WORK AREA USING ONLY PUBLIC ROADS AND APPROVED ACCESS ROADS.	5.	ADDITIONAL WARNING SIGNS MAY BE REQUIRED AS DICTATED BY CONSTRUCTION CONTRACT.	6.	MAP PROJECTION: NAD 1983 HARN STATE PLANE FLORIDA EAST FIPS 9801 FEET. VERTICAL DATUM: NAVD 88.
1	5000	FT	36" O.D. x 0.750" W.T. API 5L X70 FIBL2 DSAW, 14-16 MILS FBE	EA	EA	PIPELINE MARKERS	21040-510-TYP-20001	CATHODIC PROTECTION STD. SINGLE POINT TEST STATION, TYPE 1	7.	INDUCTION BEND QUANTITIES ALONG WITH THEIR DESCRIPTIONS ARE LOCATED ON DRAWING 21040-SSE-FW-00001.	8.	SEE ARK DRAWING PACKAGE FOR ANODE BED DEEP WELL.	9.		10.		11.			
FITTINGS SUMMARY				CONTINUOUS CONCRETE COATING				PIPE COATING DATA				SPECIAL NOTES								
ITEM NO.	QTY	UOM	DESCRIPTION	QTY	UOM	DESCRIPTION	21040-510-TYP-20002	CATHODIC PROTECTION STD. FOREIGN PIPELINE CROSSING TEST STATION, TYPE 2	21040-510-TYP-20003	CATHODIC PROTECTION STD. FOREIGN PIPELINE CROSSING TEST STATION, TYPE 2	21040-510-TYP-20013	CONTINUOUS CONCRETE COATING STANDARD FOR 36" / 30" PIPELINE	21040-510-TYP-20014	AERIAL MARKER INSTALLATION DETAIL	21040-510-TYP-20016	AERIAL MARKER DETAIL	21040-510-TYP-20017	TYPICAL PIPELINE MARKER ASSEMBLY	21040-510-TYP-20018	PIPELINE MARKER "WARNING" DECAL
PIPE ASSEMBLIES				PIPE COATING DATA				SPECIAL NOTES				SPECIAL NOTES								
QTY	UOM	DESCRIPTION	PIPE COATING: 14 MIL MINIMUM FBE AND 24 MIL MINIMUM ARO	INTERNAL COATING (YES/NO): NO				SPECIAL NOTES				SPECIAL NOTES								

REVISIONS				APPROVALS			
NO.	DESCRIPTION	DATE	REV BY	CHK BY	APP BY	DRAWN BY	MB
1	IFC (UPDATE ENV. RE-ROUTES, FOOT-PRINT)	2016-04-08	MB	MJ	RG	PROJECT MANAGER	RG
0	ISSUED FOR CONSTRUCTION	2015-12-15	MB	MJ	RG	PROJECT DEF. NO.	RG
APPROVAL				COMPANY			
ENVIRONMENTAL				LAND			
FLORIDA SOUTHEAST CONNECTION PROJECT STA. 244+00 TO 284+00 DISCIPLINE: 03 FLORIDA SOUTHEAST CONNECTION ALIGNMENT SHEET POLK COUNTY, FLORIDA							
SCALE: 1" = 200'		21040-510-ALS-00007		REV. 1		SHEET 7	



DISCLAIMER: UNIVERSALPEGASUS INTERNATIONAL MAKES NO WARRANTY (EXPRESSED, IMPLIED OR OTHERWISE) THAT THE INFORMATION CONTAINED HEREIN IS ACCURATE OR COMPLETE AS TO ANY AND ALL SUBSURFACE CONDITIONS AND CONTAMINATION. ANY RELIANCE CONTRACTOR PLACES ON THE INFORMATION CONTAINED HEREIN AS TO SUCH CONDITIONS, IS DONE SO AT ITS OWN RISK AND EXPENSE. IT IS THE SOLE RESPONSIBILITY OF THE CONTRACTOR TO CONTACT THE STATE "ONE CALL" SYSTEM PRIOR TO ANY EXCAVATION.

SURVEY DATA		STATIONING									
MATCHLINE 294+00		MATCHLINE 340+00									
1975.62 STANDARD SAND AND SILICA COMPANY 1942 FT 294+00 TO 312+42		1975.78 STANDARD SAND AND SILICA COMPANY 2758 FT 312+42 TO 340+00									
<table border="1"> <thead> <tr> <th>MATERIAL</th> <th>DESCRIPTION</th> <th>QUANTITY</th> <th>UNIT</th> </tr> </thead> <tbody> <tr> <td>Class III</td> <td>302x31</td> <td>1153.7</td> <td>CCC</td> </tr> </tbody> </table>				MATERIAL	DESCRIPTION	QUANTITY	UNIT	Class III	302x31	1153.7	CCC
MATERIAL	DESCRIPTION	QUANTITY	UNIT								
Class III	302x31	1153.7	CCC								
<table border="1"> <thead> <tr> <th>STATIONS</th> <th>DESCRIPTION</th> <th>QUANTITY</th> <th>UNIT</th> </tr> </thead> <tbody> <tr> <td>299+97</td> <td>302x31</td> <td>1153.7</td> <td>CCC</td> </tr> </tbody> </table>				STATIONS	DESCRIPTION	QUANTITY	UNIT	299+97	302x31	1153.7	CCC
STATIONS	DESCRIPTION	QUANTITY	UNIT								
299+97	302x31	1153.7	CCC								

BILL OF MATERIALS				MISCELLANEOUS MATERIALS				TYPICAL DRAWINGS				GENERAL INFORMATION																																											
ITEM NO.	QTY	UOM	DESCRIPTION	QTY	UOM	DESCRIPTION	DWG/FIELD BOOK NO.	TITLE	1.	2.	3.	4.	5.	6.																																									
1	3780	FT	36" O.D. x 0.530 W.T. API 5L X70 F82L DRAM, 14-16 MILS FBE	115	EA	SET ON WEIGHTS	21040-510-TYP-2001	CATHODIC PROTECTION STD. SINGLE POINT TEST STATION, TYPE 1	1. THE MINIMUM DEPTH OF COVER FOR THE PROJECT IS 36 INCHES. ADDITIONAL DEPTH OF COVER IS REQUIRED FOR ROAD AND WATERBODY CROSSINGS, AND IS TO BE IN ACCORDANCE WITH REFERENCED PERMIT DRAWINGS, SITE SPECIFIC DRAWINGS, OR CONSTRUCTION SPECIFICATIONS, WHICHEVER IS MORE STRINGENT.	2. THE BOUNDARIES OF ALL WORK AREAS WILL BE CLEARLY MARKED AND ALL WORK SHALL REMAIN WITHIN THE DESIGNATED WORK AREA.	3. THE REQUIRED STATE ONE CALL NOTIFICATION IS THE RESPONSIBILITY OF THE CONSTRUCTION CONTRACTOR.	4. THE CONTRACTOR SHALL ACCESS THE WORK AREA USING ONLY PUBLIC ROADS AND APPROVED ACCESS ROADS.	5. ADDITIONAL WARNING SIGNS MAY BE REQUIRED AS DICTATED BY CONSTRUCTION CONTRACT.	6. MAP PROJECTION: NAD 1983 HARN STATE PLANE FLORIDA EAST FIPS 0801 FEET. VERTICAL DATUM: NAD 83.																																									
2	531	FT	36" O.D. x 0.750 W.T. API 5L X70 F82L DRAM, 14-16 MILS FBE	1	EA	WARNING SIGNS	21040-510-TYP-2002	CATHODIC PROTECTION STD. FOREIGN PIPELINE CROSSING TEST STATION, TYPE 2	7. THE REQUIRED STATE ONE CALL NOTIFICATION IS THE RESPONSIBILITY OF THE CONSTRUCTION CONTRACTOR.	8. THE CONTRACTOR SHALL ACCESS THE WORK AREA USING ONLY PUBLIC ROADS AND APPROVED ACCESS ROADS.	9. ADDITIONAL WARNING SIGNS MAY BE REQUIRED AS DICTATED BY CONSTRUCTION CONTRACT.	10. MAP PROJECTION: NAD 1983 HARN STATE PLANE FLORIDA EAST FIPS 0801 FEET. VERTICAL DATUM: NAD 83.	11. INDUCTION BEND QUANTITIES ALONG WITH THEIR DESCRIPTIONS ARE LOCATED ON DRAWING 21040-SIG-FEW-00001.	12. A "B" SEE AER DRAWING PACKAGE FOR ANODE BED DEEP WELL.																																									
<table border="1"> <thead> <tr> <th>ITEM NO.</th> <th>QTY</th> <th>UOM</th> <th>DESCRIPTION</th> </tr> </thead> <tbody> <tr> <td>1</td> <td>1</td> <td>EA</td> <td>80" 3R HORIZONTAL FITTING</td> </tr> </tbody> </table>				ITEM NO.	QTY	UOM	DESCRIPTION	1	1	EA	80" 3R HORIZONTAL FITTING	<table border="1"> <thead> <tr> <th>ITEM NO.</th> <th>QTY</th> <th>UOM</th> <th>DESCRIPTION</th> </tr> </thead> <tbody> <tr> <td>1153</td> <td>1153</td> <td>FT</td> <td>7" OF CONTINUOUS CONCRETE COATING (140 PCF DENSITY CONCRETE)</td> </tr> </tbody> </table>				ITEM NO.	QTY	UOM	DESCRIPTION	1153	1153	FT	7" OF CONTINUOUS CONCRETE COATING (140 PCF DENSITY CONCRETE)	<table border="1"> <thead> <tr> <th>ITEM NO.</th> <th>QTY</th> <th>UOM</th> <th>DESCRIPTION</th> </tr> </thead> <tbody> <tr> <td>21040-510-TYP-2013</td> <td></td> <td></td> <td>TYPICAL SADDLE BAG WEIGHTS</td> </tr> <tr> <td>21040-510-TYP-2014</td> <td></td> <td></td> <td>WARNING SIGN DETAIL</td> </tr> <tr> <td>21040-510-TYP-2015</td> <td></td> <td></td> <td>AERIAL MARKER INSTALLATION DETAIL</td> </tr> <tr> <td>21040-510-TYP-2016</td> <td></td> <td></td> <td>AERIAL MARKER DETAIL</td> </tr> <tr> <td>21040-510-TYP-2017</td> <td></td> <td></td> <td>TYPICAL PIPELINE MARKER ASSEMBLY</td> </tr> <tr> <td>21040-510-TYP-2018</td> <td></td> <td></td> <td>PIPELINE MARKER "WARNING" DECAL</td> </tr> </tbody> </table>				ITEM NO.	QTY	UOM	DESCRIPTION	21040-510-TYP-2013			TYPICAL SADDLE BAG WEIGHTS	21040-510-TYP-2014			WARNING SIGN DETAIL	21040-510-TYP-2015			AERIAL MARKER INSTALLATION DETAIL	21040-510-TYP-2016			AERIAL MARKER DETAIL	21040-510-TYP-2017			TYPICAL PIPELINE MARKER ASSEMBLY	21040-510-TYP-2018			PIPELINE MARKER "WARNING" DECAL
ITEM NO.	QTY	UOM	DESCRIPTION																																																				
1	1	EA	80" 3R HORIZONTAL FITTING																																																				
ITEM NO.	QTY	UOM	DESCRIPTION																																																				
1153	1153	FT	7" OF CONTINUOUS CONCRETE COATING (140 PCF DENSITY CONCRETE)																																																				
ITEM NO.	QTY	UOM	DESCRIPTION																																																				
21040-510-TYP-2013			TYPICAL SADDLE BAG WEIGHTS																																																				
21040-510-TYP-2014			WARNING SIGN DETAIL																																																				
21040-510-TYP-2015			AERIAL MARKER INSTALLATION DETAIL																																																				
21040-510-TYP-2016			AERIAL MARKER DETAIL																																																				
21040-510-TYP-2017			TYPICAL PIPELINE MARKER ASSEMBLY																																																				
21040-510-TYP-2018			PIPELINE MARKER "WARNING" DECAL																																																				

LEGEND

- PROPOSED PIPELINE
- EXISTING PIPELINE
- PROPOSED ROAD
- EXISTING ROAD
- PROPOSED UTILITY
- EXISTING UTILITY
- PROPOSED FENCE
- EXISTING FENCE
- PROPOSED ANODE BED DEEP WELL
- EXISTING ANODE BED DEEP WELL

REVISIONS

NO.	DESCRIPTION	DATE	REV BY	APP BY
1	IFC (UPDATE ENV. RE-ROUTES, FOOT-PRINT)	2016-04-08	MB	MJ
2	ISSUED FOR CONSTRUCTION	2015-12-15	MB	MJ

APPROVALS

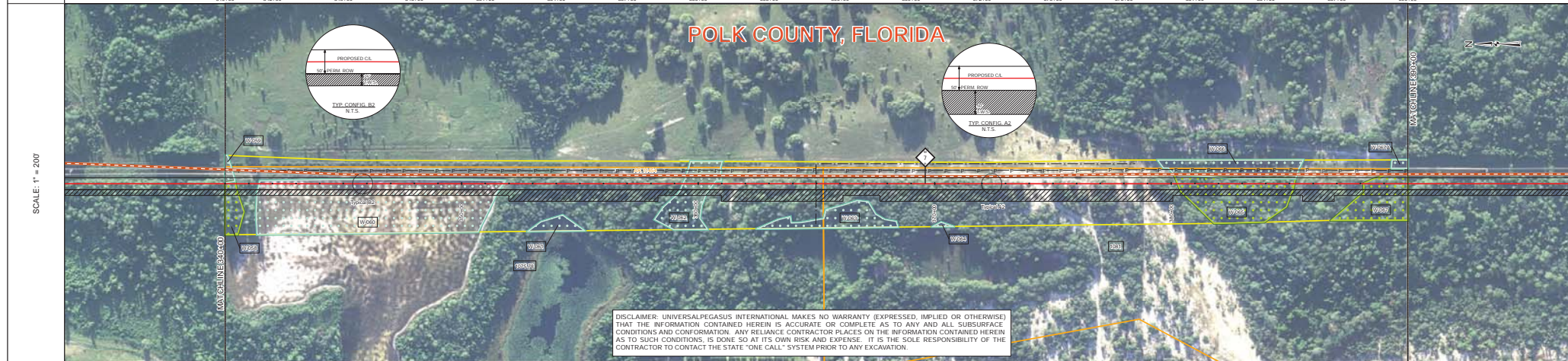
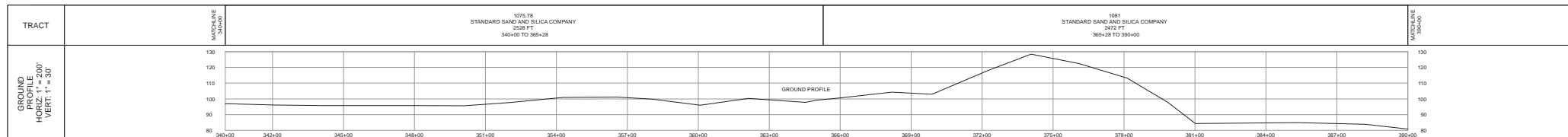
NO.	DESCRIPTION	DATE	REV BY	APP BY
1	APPROVAL			

FLORIDA SOUTHEAST CONNECTION PROJECT

ALIGNMENT SHEET 1

POLK COUNTY, FLORIDA

SCALE: 1" = 200' 21040-510-ALS-00008 REV. 1



POLK COUNTY, FLORIDA

DISCLAIMER: UNIVERSALPEGASUS INTERNATIONAL MAKES NO WARRANTY (EXPRESSED, IMPLIED OR OTHERWISE) THAT THE INFORMATION CONTAINED HEREIN IS ACCURATE OR COMPLETE AS TO ANY AND ALL SUBSURFACE CONDITIONS AND CONFIRMATION. ANY RELIANCE CONTRACTOR PLACES ON THE INFORMATION CONTAINED HEREIN AS TO SUCH CONDITIONS, IS DONE SO AT ITS OWN RISK AND EXPENSE. IT IS THE SOLE RESPONSIBILITY OF THE CONTRACTOR TO CONTACT THE STATE "ONE CALL" SYSTEM PRIOR TO ANY EXCAVATION.

SURVEY DATA		STATIONING	
MATCHLINE 300+00	300+00	MATCHLINE 300+00	300+00

ENGINEERING DATA		MATERIAL	
MATCHLINE 300+00	300+00	MATCHLINE 300+00	300+00
103-7' CCC	103-7'	103-7' CCC	103-7'
150-8' BSH	150-8'	150-8' BSH	150-8'
10.5 CC	10.5	10.5 CC	10.5
1523-7' CCC	1523-7'	1523-7' CCC	1523-7'

ENVIRONMENTAL DATA		STATIONS	
MATCHLINE 300+00	300+00	MATCHLINE 300+00	300+00
300+43	300+43	300+43	300+43
301+24	301+24	301+24	301+24
301+44	301+44	301+44	301+44
301+96	301+96	301+96	301+96
302+79	302+79	302+79	302+79
303+12	303+12	303+12	303+12
303+96	303+96	303+96	303+96
304+05	304+05	304+05	304+05
304+80	304+80	304+80	304+80
305+00	305+00	305+00	305+00
305+79	305+79	305+79	305+79
306+12	306+12	306+12	306+12
306+96	306+96	306+96	306+96
307+40	307+40	307+40	307+40
307+60	307+60	307+60	307+60
307+80	307+80	307+80	307+80
308+00	308+00	308+00	308+00
308+27	308+27	308+27	308+27
308+41	308+41	308+41	308+41
308+13	308+13	308+13	308+13

BILL OF MATERIALS				MISCELLANEOUS MATERIALS				TYPICAL DRAWINGS				GENERAL INFORMATION																						
ITEM NO.	QTY	UOM	DESCRIPTION	QTY	UOM	DESCRIPTION	DWG/FIELD BOOK NO.	TITLE	1. THE MINIMUM DEPTH OF COVER FOR THE PROJECT IS 36 INCHES. ADDITIONAL DEPTH OF COVER IS REQUIRED FOR ROAD AND WATERBODY CROSSINGS AND IS TO BE IN ACCORDANCE WITH REFERENCED PERMIT DRAWINGS, SITE SPECIFIC DRAWINGS, OR CONSTRUCTION SPECIFICATIONS, WHICHEVER IS MORE STRINGENT.	2. THE BOUNDARIES OF ALL WORK AREAS WILL BE CLEARLY MARKED AND ALL WORK SHALL REMAIN WITHIN THE DESIGNATED WORK AREA.	3. THE REQUIRED STATE ONE CALL NOTIFICATION IS THE RESPONSIBILITY OF THE CONSTRUCTION CONTRACTOR.	4. THE CONTRACTOR SHALL ACCESS THE WORK AREA USING ONLY PUBLIC ROADS AND APPROVED ACCESS ROADS.	5. ADDITIONAL WARNING SIGNS MAY BE REQUIRED AS DICTATED BY CONSTRUCTION CONTRACT.	6. MAP PROJECTION: NAD 1983 HARN STATE PLANE FLORIDA EAST FIPS 0801 FEET. VERTICAL DATUM: NAVD 83.																				
1	5000	FT	36" O.D. x 0.530" W.T. API 5L X70 FIBERGLASS, 14-16 MILS FBE	EA	EA	PIPELINE MARKERS	21040-510-TYP-20001	CATHODIC PROTECTION STD. SINGLE POINT TEST STATION, TYPE 1	21040-510-TYP-20002	CATHODIC PROTECTION STD. FOREIGN PIPELINE CROSSING TEST STATION, TYPE 2	21040-510-TYP-20003	CP TEST STATION TYPE 1	21040-510-TYP-20004	CP TEST STATION TYPE 2	21040-510-TYP-20005	AERIAL MARKERS	21040-510-TYP-20006	ANODE BED DEEP WELL	21040-510-TYP-20007	CONTINUOUS CONCRETE COATING STANDARD FOR 36"/30" PIPELINE	21040-510-TYP-20008	AERIAL MARKER INSTALLATION DETAIL	21040-510-TYP-20009	TYPICAL SADDLE BAG WEIGHTS	21040-510-TYP-20010	WARNING SIGN DETAIL	21040-510-TYP-20011	AERIAL MARKER DETAIL	21040-510-TYP-20012	TYPICAL PIPELINE MARKER ASSEMBLY	21040-510-TYP-20013	PIPELINE MARKER "WARNING" DECAL	21040-510-TYP-20014	PIPELINE MARKER "WARNING" DECAL

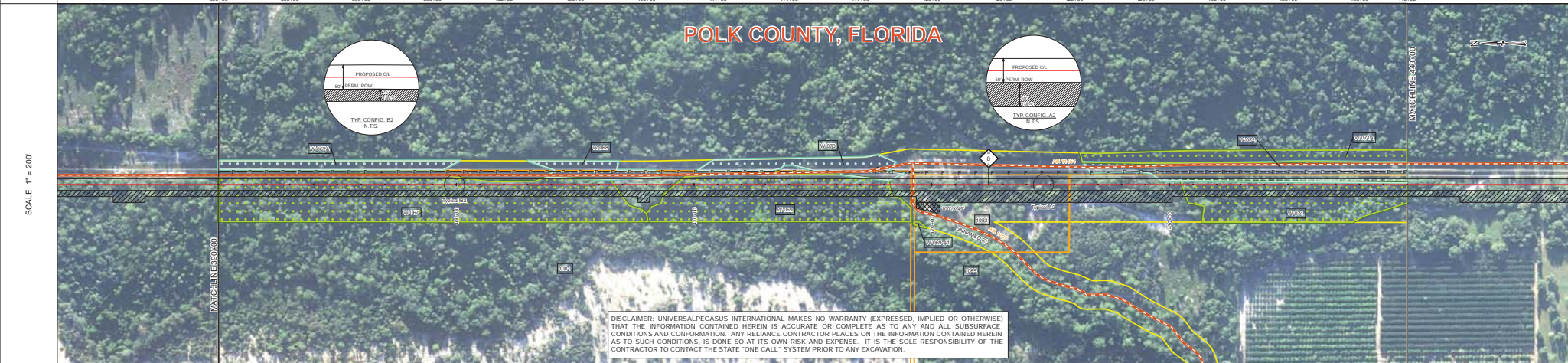
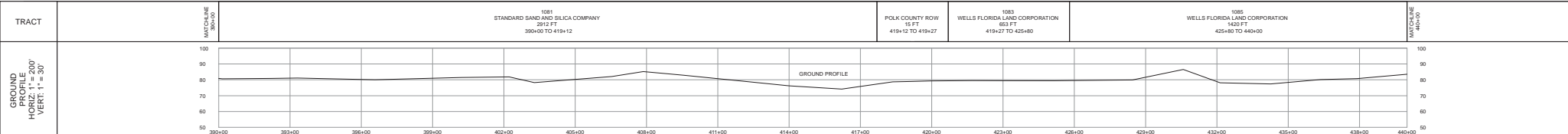
FITTINGS SUMMARY				CONTINUOUS CONCRETE COATING				PIPE COATING DATA							
ITEM NO.	QTY	UOM	DESCRIPTION	QTY	UOM	DESCRIPTION	QTY	UOM	DESCRIPTION	QTY	UOM	DESCRIPTION	QTY	UOM	DESCRIPTION
1	1116	FT	7" OF CONTINUOUS CONCRETE COATING (140 PCF DENSITY CONCRETE)	1116	FT	14 MIL MINIMUM FBE AND 24 MIL MINIMUM ARO	1116	FT	2 PART EPOXY	1116	FT	INTERNAL COATING (YES/NO): NO			

LEGEND				REVISIONS				APPROVALS							
MEASUREMENT SIGN	TEMPORARY WARNING SIGN	ADDITIONAL TEMPORARY WARNING SIGN	NON FORESTED WETLAND	FORESTED WETLAND	WATERBODY	RAILROAD	ROADWAY	ROADWAY	ROADWAY	ROADWAY	ROADWAY	ROADWAY	ROADWAY	ROADWAY	ROADWAY
PIPELINE MARKER	PIPELINE MARKER	PIPELINE MARKER	PIPELINE MARKER	PIPELINE MARKER	PIPELINE MARKER	PIPELINE MARKER	PIPELINE MARKER	PIPELINE MARKER	PIPELINE MARKER	PIPELINE MARKER	PIPELINE MARKER	PIPELINE MARKER	PIPELINE MARKER	PIPELINE MARKER	PIPELINE MARKER

REVISIONS			
NO.	DESCRIPTION	DATE	REV BY
1	IFC (UPDATE ENV. RE-ROUTES, FOOT-PRINT)	2016-04-08	MB MJ
0	ISSUED FOR CONSTRUCTION	2015-12-15	MB MJ

APPROVALS			
DRAWN BY:	MB	CONSTRUCTION PERMIT NO.	
CHECKED BY:	MJ	MAINTENANCE OPERATION REGION	
PROJECT MANAGER:	RG	MIN. TEST PRESSURE:	1816 PSI
PROJECT DEF. NO.:		DESIGN PRESSURE:	1440 PSI

FLORIDA SOUTHEAST CONNECTION PROJECT			
STATION	340+00 TO 390+00	DISCIPLINE	03
FLORIDA SOUTHEAST CONNECTION ALIGNMENT SHEET 1 POLK COUNTY, FLORIDA			
SCALE:	1" = 200'	PROJECT NO.:	21040-510-ALS-00009
		REV.:	1



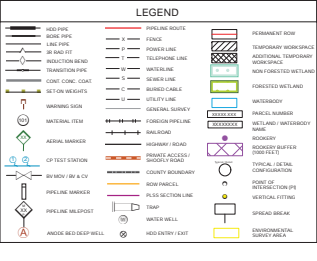
DISCLAIMER: UNIVERSALPEGASUS INTERNATIONAL MAKES NO WARRANTY (EXPRESSED, IMPLIED OR OTHERWISE) THAT THE INFORMATION CONTAINED HEREIN IS ACCURATE OR COMPLETE AS TO ANY AND ALL SUBSURFACE CONDITIONS AND CONFIRMATION. ANY RELIANCE CONTRACTOR PLACES ON THE INFORMATION CONTAINED HEREIN AS TO SUCH CONDITIONS, IS DONE SO AT ITS OWN RISK AND EXPENSE. IT IS THE SOLE RESPONSIBILITY OF THE CONTRACTOR TO CONTACT THE STATE "ONE CALL" SYSTEM PRIOR TO ANY EXCAVATION.

SURVEY DATA		STATIONING		MATERIAL	
MATCHLINE 390+00		MATCHLINE 390+00		MATCHLINE 390+00	
MATCHLINE 440+00		MATCHLINE 440+00		MATCHLINE 440+00	
STATIONING		MATERIAL		STATIONS	
390+00		390+15		W/567	
393+00		393+15		1052	
396+00		396+15			
399+00		399+15			
402+00		402+15			
405+00		405+15			
408+00		408+15			
411+00		411+15			
414+00		414+15			
417+00		417+15			
420+00		420+15			
423+00		423+15			
426+00		426+15			
429+00		429+15			
432+00		432+15			
435+00		435+15			
438+00		438+15			
440+00		440+15		W/571	

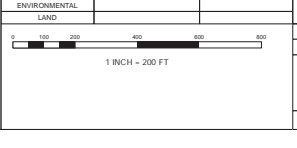
BILL OF MATERIALS				MISCELLANEOUS MATERIALS				TYPICAL DRAWINGS				GENERAL INFORMATION			
ITEM NO.	QTY	UOM	DESCRIPTION	QTY	UOM	DESCRIPTION	DWG/FIELD BOOK NO.	TITLE	1. THE MINIMUM DEPTH OF COVER FOR THE PROJECT IS 36 INCHES. ADDITIONAL DEPTH OF COVER IS REQUIRED FOR ROAD AND WATERBODY CROSSINGS AND IS TO BE IN ACCORDANCE WITH REFERENCED PERMIT DRAWINGS, SITE SPECIFIC DRAWINGS, OR CONSTRUCTION SPECIFICATIONS, WHICHEVER IS MORE STRINGENT.						
1	4990	FT	36" O.D. x 0.520 W.T., API 5L X70, FBEL, DSAW, 14-16 MILS FBE	0	EA	SET ON WEIGHTS	21040-510-TYP-2001	CATHODIC PROTECTION STD. SINGLE POINT TEST STATION, TYPE 1	2. THE BOUNDARIES OF ALL WORK AREAS WILL BE CLEARLY MARKED AND ALL WORK SHALL REMAIN WITHIN THE DESIGNATED WORK AREA.						
2	40	FT	36" O.D. x 0.625 W.T., API 5L X70, FBEL, DSAW, 14-16 MILS FBE	1	EA	WARNING SIGNS	21040-510-TYP-2002	CATHODIC PROTECTION STD. FOREIGN PIPELINE CROSSING TEST STATION, TYPE 2	3. THE REQUIRED STATE ONE CALL NOTIFICATION IS THE RESPONSIBILITY OF THE CONSTRUCTION CONTRACTOR.						
				1	EA	CP TEST STATION TYPE 1	21040-510-TYP-2003	CATHODIC PROTECTION STD. TYPICAL OPEN CUT / BORE	4. THE CONTRACTOR SHALL ACCESS THE WORK AREA USING ONLY PUBLIC ROADS AND APPROVED ACCESS ROADS.						
				1	EA	CP TEST STATION TYPE 2	21040-510-TYP-2008	CONTINUOUS CONCRETE COATING STANDARD FOR 36"/30" PIPELINE	5. ADDITIONAL WARNING SIGNS MAY BE REQUIRED AS DICTATED BY CONSTRUCTION CONTRACT.						
				0	EA	AERIAL MARKERS	21040-510-TYP-2012	TYPICAL SCALE BAG WEIGHTS	6. MAP PROJECTION: NAD 1983 HARN STATE PLANE FLORIDA EAST FIPS 0801 FEET, VERTICAL DATUM: NAVD 83.						
				0	EA	ANODE BED DEEP WELL	21040-510-TYP-2014	WARNING SIGN DETAIL	SPECIAL NOTES						
				0	EA		21040-510-TYP-2016	AERIAL MARKER INSTALLATION DETAIL	1. INDUCTION BEND QUANTITIES ALONG WITH THEIR DESCRIPTIONS ARE LOCATED ON DRAWING 21040-SSE-FW-00001.						
				0	EA		21040-510-TYP-2018	AERIAL MARKER DETAIL	2. A - SEE ARK DRAWING PACKAGE FOR ANODE BED DEEP WELL.						
				0	EA		21040-510-TYP-2017	TYPICAL PIPELINE MARKER ASSEMBLY							
				0	EA		21040-510-TYP-2018	PIPELINE MARKER "WARNING" DECAL							

FITTINGS SUMMARY				CONTINUOUS CONCRETE COATING			
ITEM NO.	QTY	UOM	DESCRIPTION	QTY	UOM	DESCRIPTION	
				3669	FT	7' OF CONTINUOUS CONCRETE COATING (140 PCF DENSITY CONCRETE)	

PIPE ASSEMBLIES			
QTY	UOM	DESCRIPTION	
		PIPE COATING: 14 MIL MINIMUM FBE AND 24 MIL MINIMUM ARO	
		GIRTH WELD COATING: 2 PART EPOXY	
		INTERNAL COATING (YES/NO): NO	



REVISIONS				APPROVALS			
NO.	DESCRIPTION	DATE	REV BY	APP BY	MB	CONSTRUCTION PERMIT NO.	
1	IFC (UPDATE ENV. RE-ROUTES, FOOT-PRINT)	2016-04-08	MB	MJ	MB	MAINTENANCE OPERATION REGION	
0	ISSUED FOR CONSTRUCTION	2015-12-15	MB	MJ	RG	MIN. TEST PRESSURE 1816 PSI	
APPROVAL				COMPANY			
UNIVERSALPEGASUS INTERNATIONAL				FLORIDA SOUTHEAST CONNECTION			



FLORIDA SOUTHEAST CONNECTION PROJECT
 STA. 390+00 TO 440+00
FLORIDA SOUTHEAST CONNECTION ALIGNMENT SHEET 1
POLK COUNTY, FLORIDA

SCALE: 1" = 200'
 21040-510-ALS-00010
 REV. 1

DISCIPLINE: 03
 SHEET 10