

SURVEY DATA		STATIONING	
MATCHLINE 5850+00	5850+00	MATCHLINE 5905+00	5905+00

ENGINEERING DATA		MATERIAL	
34-762 SBW 11.5 CC	13-762 SBW 11.5 CC	07-762 SBW 11.5 CC	12-762 SBW 11.5 CC

ENVIRONMENTAL DATA		STATIONS	
5850+00	5850+00	5850+00	5850+00

BILL OF MATERIALS				MISCELLANEOUS MATERIALS				TYPICAL DRAWINGS				GENERAL INFORMATION				
ITEM NO.	QTY	UOM	DESCRIPTION	QTY	UOM	REIN. NUMBER	MATERIAL NUMBER	DESCRIPTION	DWG/FIELD BOOK NO.	TITLE	1. THE MINIMUM DEPTH OF COVER FOR THE PROJECT IS 36 INCHES. ADDITIONAL DEPTH OF COVER IS REQUIRED FOR ROAD AND WATERBODY CROSSINGS AND IS TO BE IN ACCORDANCE WITH REFERENCED PERMIT DRAWINGS, SITE SPECIFIC DRAWINGS, OR CONSTRUCTION SPECIFICATIONS. WHICHEVER IS MORE STRINGENT.	2. THE BOUNDARIES OF ALL WORK AREAS WILL BE CLEARLY MARKED AND ALL WORK SHALL REMAIN WITHIN THE DESIGNATED WORK AREA.	3. THE REQUIRED STATE ONE CALL NOTIFICATION IS THE RESPONSIBILITY OF THE CONSTRUCTION CONTRACTOR.	4. THE CONTRACTOR SHALL ACCESS THE WORK AREA USING ONLY PUBLIC ROADS AND APPROVED ACCESS ROADS.	5. ADDITIONAL WARNING SIGNS MAY BE REQUIRED AS DICTATED BY CONSTRUCTION CONTRACT.	6. MAP PROJECTION: NAD 1983 HARN STATE PLANE FLORIDA EAST FIPS 9801 FEET. (VERTICAL DATUM: NAD 83).

FITTINGS SUMMARY				CONTINUOUS CONCRETE COATING				PIPE COATING DATA			
ITEM NO.	QTY	UOM	DESCRIPTION	ITEM NO.	QTY	UOM	DESCRIPTION	ITEM NO.	QTY	UOM	DESCRIPTION

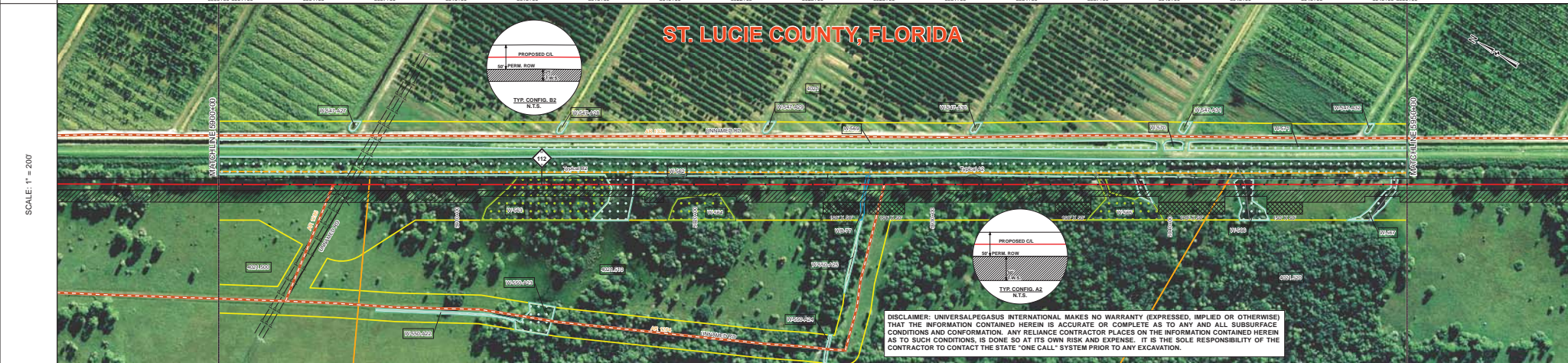
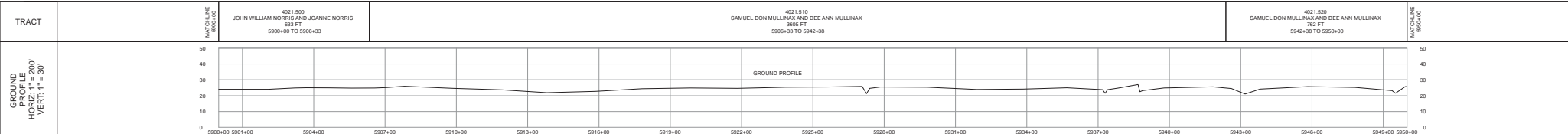
LEGEND				REVISIONS				APPROVALS			
PIPELINE ROUTE	25' FENCE ROW	ROAD	UTILITY LINE	NO.	DESCRIPTION	DATE	REV. BY	CHK. BY	APP. BY	MB	CONSTRUCTION PERMIT NO.

APPROVALS			
ENVIRONMENTAL	LAND	APPROVAL	COMPANY

**UniversalPegasus INTERNATIONAL**  
 A Subsidiary of Westgroup Health Services  
**FLORIDA SOUTHEAST CONNECTION**  
 2140-510-ALS-00123  
 ST. LUCIE COUNTY, FLORIDA  
 SCALE: 1" = 200'  
 REV. 1



SURVEY DATA		STATIONING	
MATCHLINE 5900+00		MATCHLINE 5950+00	
MATCHLINE 5900+00		MATCHLINE 5950+00	
ENGINEERING DATA		MATERIAL	
REFERENCE DRAWING		60-762 SBW 11.5 CC	
CLASS LOCATION		5000	
MINIMUM DEPTH OF COVER		7-762 SBW 10.5 CC	
CL-BITUMEN CATHODIC PROTECTION		36-762 SBW 11.5 CC	
INTERSECTION/WETLAND CROSSINGS		17-762 SBW 11.5 CC	
INTERSECTION/WETLAND AVOIDANCE		11-762 SBW 11.5 CC	
ENVIRONMENTAL DATA		STATIONS	
PERMIT/REGULATORY CONTROL		5912+31	
EROSION CONTROL CODE		5914+7	
PAVING BEHAVIOR CODE		5917+44	
TOPSOIL SALVAGE		THIS BAND NOT UTILIZED	
THREATENED AND ENDANGERED SPECIES		THIS BAND NOT UTILIZED	
TRADING CONSTRAINT		THIS BAND NOT UTILIZED	
CONSTRAINT 1		THIS BAND NOT UTILIZED	
CONSTRAINT 2		THIS BAND NOT UTILIZED	
CONSTRAINT 3		THIS BAND NOT UTILIZED	

BILL OF MATERIALS				MISCELLANEOUS MATERIALS				TYPICAL DRAWINGS				GENERAL INFORMATION									
ITEM NO.	QTY	UOM	DESCRIPTION	ITEM NO.	QTY	UOM	DESCRIPTION	DWG/FIELD BOOK NO.	TITLE	1.	THE MINIMUM DEPTH OF COVER FOR THE PROJECT IS 36 INCHES. ADDITIONAL DEPTH OF COVER IS REQUIRED FOR ROAD AND WATERBODY CROSSINGS, AND IS TO BE IN ACCORDANCE WITH REFERENCED PERMIT DRAWINGS, SITE SPECIFIC DRAWINGS, OR CONSTRUCTION SPECIFICATIONS, WHICHEVER IS MORE STRINGENT.	2.	THE BOUNDARIES OF ALL WORK AREAS WILL BE CLEARLY MARKED AND ALL WORK SHALL REMAIN WITHIN THE DESIGNATED WORK AREA.	3.	THE REQUIRED STATE ONE CALL NOTIFICATION IS THE RESPONSIBILITY OF THE CONSTRUCTION CONTRACTOR.	4.	THE CONTRACTOR SHALL ACCESS THE WORK AREA USING ONLY PUBLIC ROADS AND APPROVED ACCESS ROADS.	5.	ADDITIONAL WARNING SIGNS MAY BE REQUIRED AS DETERMINED BY CONSTRUCTION CONTRACT.	6.	MAP PROJECTION: NAD 1983 HARN STATE PLANE FLORIDA EAST FIPS 8061 FEET. VERTICAL DATUM: NAVD 83.
1	30'	O.D.	14" A.P.S.L. 3/16" P.B.L. D.S.W. 14-16 M.L.S. F.B.E.	1	EA		SET ON WEIGHTS	21040-510-TYP-2001	CATHODIC PROTECTION STD. SINGLE POINT TEST STATION, TYPE 1	7.	INDUCTION BEND QUANTITIES ALONG WITH THEIR DESCRIPTIONS ARE LOCATED ON DRAWING 21040-SSE-EW-00001.	8.	SEE ARK DRAWING PACKAGE FOR ANODE BED DEEP WELL.								
2	5000'	FT		2	EA		PIPELINE MARKERS			8.											
3	1	EA		3	EA		WARNING SIGNS			9.											
4	1	EA		4	EA		CP TEST STATION TYPE 1	21040-510-TYP-2002	CATHODIC PROTECTION STD. FOREIGN PIPELINE CROSSING TEST STATION, TYPE 2	10.											
5	1	EA		5	EA		CP TEST STATION TYPE 2	21040-510-TYP-2003	TYPICAL OPEN CUT / BORE	11.											
6	1	EA		6	EA		AERIAL MARKERS			12.											
7	0	EA		7	EA		ANODE BED DEEP WELL	21040-510-TYP-2012	CONTINUOUS CONCRETE COATING STANDARD FOR 36"/30" PIPELINE	13.											
FITTINGS SUMMARY				CONTINUOUS CONCRETE COATING				PIPE COATING DATA				SPECIAL NOTES									
ITEM NO.	QTY	UOM	DESCRIPTION	ITEM NO.	QTY	UOM	DESCRIPTION	ITEM NO.	QTY	UOM	DESCRIPTION	1.	INDUCTION BEND QUANTITIES ALONG WITH THEIR DESCRIPTIONS ARE LOCATED ON DRAWING 21040-SSE-EW-00001.	2.	SEE ARK DRAWING PACKAGE FOR ANODE BED DEEP WELL.						
1	1	EA		1	EA			1	1	EA											
PIPE ASSEMBLIES				PIPE COATING DATA				SPECIAL NOTES				SPECIAL NOTES									
QTY	UOM	DESCRIPTION		ITEM NO.	QTY	UOM	DESCRIPTION	1.	INDUCTION BEND QUANTITIES ALONG WITH THEIR DESCRIPTIONS ARE LOCATED ON DRAWING 21040-SSE-EW-00001.	2.	SEE ARK DRAWING PACKAGE FOR ANODE BED DEEP WELL.										

### LEGEND

- PIPELINE ROUTE
- CONSTRUCTION TEMPORARY ROADWAY
- NON-FORRESTED WETLAND
- FORRESTED WETLAND
- WATERBODY
- PAVED ROAD
- UNPAVED ROAD
- ROAD ACCESS / DRIVEWAY
- PLUG SECTION LINE
- ROAD BOUNDARY
- PLUG SECTION LINE
- TRAIL
- WATER WELL
- ANODE BED DEEP WELL
- ANODE BED DEEP WELL
- ENVIRONMENTAL SENSITIVE AREA
- PERMITTED USE
- ROADWAY WETLAND
- WATERLINE
- SEWER LINE
- UTILITY LINE
- GENERAL PIPELINE
- ROADWAY ROAD
- ROAD ACCESS / DRIVEWAY
- PLUG SECTION LINE
- ROAD BOUNDARY
- PLUG SECTION LINE
- TRAIL
- WATER WELL
- ANODE BED DEEP WELL
- ANODE BED DEEP WELL
- ENVIRONMENTAL SENSITIVE AREA

### REVISIONS

NO.	DESCRIPTION	DATE	REV BY	CHK BY	APP BY
1	IFC (UPDATE ENV. RE-ROUTES, FOOT-PRINT)	2016-04-08	MB	MJ	RG
2	ISSUED FOR CONSTRUCTION	2015-12-15	MB	MJ	RG

APPROVAL

UNIVERSALPEGASUS INTERNATIONAL

### APPROVALS

NO.	DESCRIPTION	DATE	REV BY	CHK BY	APP BY
1	CONSTRUCTION PERMIT NO.				
2	MAINTENANCE OPERATION REGION				
3	MIN. TEST PRESSURE 1816 PSI				
4	DESIGN PRESSURE 1440 PSI				

UNIVERSALPEGASUS INTERNATIONAL

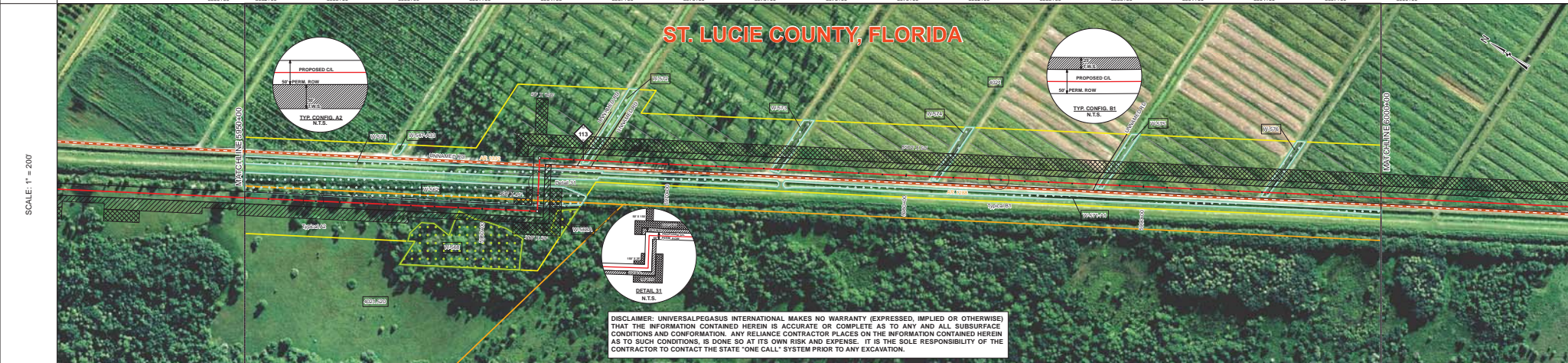
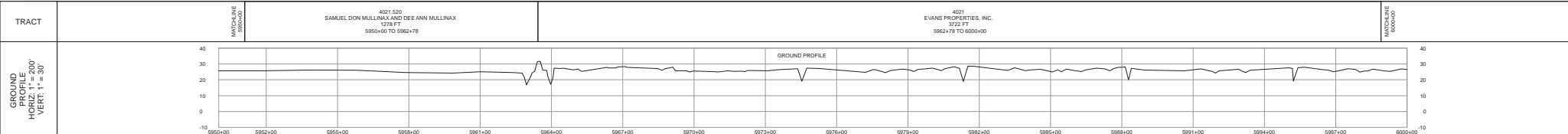
FLORIDA SOUTHEAST CONNECTION

FLORIDA SOUTHEAST CONNECTION ALIGNMENT SHEET 1 ST. LUCIE COUNTY, FLORIDA

SCALE: 1" = 200'

21040-510-ALS-00124

REV. 1

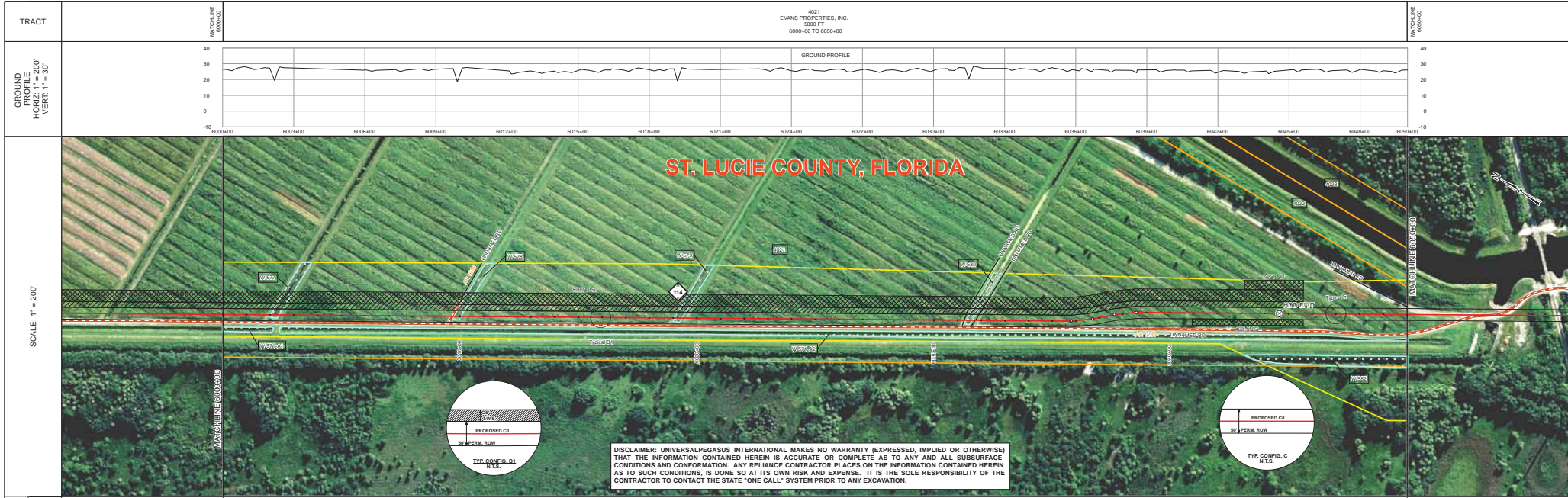


**DISCLAIMER: UNIVERSALPEGASUS INTERNATIONAL MAKES NO WARRANTY (EXPRESSED, IMPLIED OR OTHERWISE) THAT THE INFORMATION CONTAINED HEREIN IS ACCURATE OR COMPLETE AS TO ANY AND ALL SUBSURFACE CONDITIONS AND CONFIRMATION. ANY RELIANCE CONTRACTOR PLACES ON THE INFORMATION CONTAINED HEREIN AS TO SUCH CONDITIONS, IS DONE SO AT ITS OWN RISK AND EXPENSE. IT IS THE SOLE RESPONSIBILITY OF THE CONTRACTOR TO CONTACT THE STATE "ONE CALL" SYSTEM PRIOR TO ANY EXCAVATION.**

SURVEY DATA		STATIONING	
MATCHLINE 5950+00		MATCHLINE 6000+00	
MATERIAL		STATIONS	
REFERENCE DRAWING CLASS LOCATION MINIMUM DEPTH OF COVER CATHODIC PROTECTION		5976+00 5977+00 5978+00 5979+00 5980+00 5981+00 5982+00 5983+00 5984+00 5985+00 5986+00 5987+00 5988+00 5989+00 5990+00 5991+00 5992+00 5993+00 5994+00 5995+00 5996+00 5997+00 5998+00 5999+00 6000+00	
ENVIRONMENTAL DATA		STATIONS	
INTERSECTION/WETLAND CROSSINGS INTERSECTION/WETLAND AVOIDANCE PERMITTING/REGULATORY CONTROL TOPSOIL SALVAGE THREATENED AND ENDANGERED SPECIES TRADING CONSTRAINT CONSTRAINT 1 CONSTRAINT 2 CONSTRAINT 3		5950+00 5951+00 5952+00 5953+00 5954+00 5955+00 5956+00 5957+00 5958+00 5959+00 5960+00 5961+00 5962+00 5963+00 5964+00 5965+00 5966+00 5967+00 5968+00 5969+00 5970+00 5971+00 5972+00 5973+00 5974+00 5975+00 5976+00 5977+00 5978+00 5979+00 5980+00 5981+00 5982+00 5983+00 5984+00 5985+00 5986+00 5987+00 5988+00 5989+00 5990+00 5991+00 5992+00 5993+00 5994+00 5995+00 5996+00 5997+00 5998+00 5999+00 6000+00	

BILL OF MATERIALS		MISCELLANEOUS MATERIALS		TYPICAL DRAWINGS		GENERAL INFORMATION		LEGEND		REVISIONS		APPROVALS						
ITEM NO.	QTY	UOM	RECN NUMBER	MATERIAL NUMBER	DESCRIPTION	DWG/FIELD BOOK NO.	TITLE	1. THE MINIMUM DEPTH OF COVER FOR THE PROJECT IS 36 INCHES. ADDITIONAL DEPTH OF COVER IS REQUIRED FOR ROAD AND WATERBODY CROSSINGS, AND IS TO BE IN ACCORDANCE WITH REFERENCED PERMIT DRAWINGS, SITE SPECIFIC DRAWINGS, OR CONSTRUCTION SPECIFICATIONS, WHICHEVER IS MORE STRINGENT.		NO.	DESCRIPTION	DATE	REV BY	APP BY	DRAWN BY	MB	CONSTRUCTION PERMIT NO.	
1	4840	FT			30" O.D. x 0.429 W.T. API 5L X70 F152 DSAM, 14-16 MILS FBE		SET ON WEIGHTS	2. THE BOUNDARIES OF ALL WORK AREAS WILL BE CLEARLY MARKED AND ALL WORK SHALL REMAIN WITHIN THE DESIGNATED WORK AREA.		1	IFC (UPDATE ENV. RE-ROUTES, FOOT-PRINT)	2016-04-08	MB	MJ			MAINTENANCE OPERATION REGION	
2	160	FT			30" O.D. x 0.514 W.T. API 5L X70 F152 DSAM, 14-16 MILS FBE & 24-30 MILS ARD		PIPELINE MARKERS	3. THE REQUIRED STATE ONE CALL NOTIFICATION IS THE RESPONSIBILITY OF THE CONSTRUCTION CONTRACTOR.		2	ISSUED FOR CONSTRUCTION	2015-12-15	MB	MJ			DESIGN PRESSURE 1816 PSI	
FITTINGS SUMMARY		CONTINUOUS CONCRETE COATING		PIPE COATING DATA		SPECIAL NOTES		ENVIRONMENTAL DATA		APPROVALS		APPROVALS						
ITEM NO.	QTY	UOM	RECN NUMBER	MATERIAL NUMBER	DESCRIPTION	DWG/FIELD BOOK NO.	TITLE	4. THE CONTRACTOR SHALL ACCESS THE WORK AREA USING ONLY PUBLIC ROADS AND APPROVED ACCESS ROADS.		3	APPROVAL							DESIGN PRESSURE 1440 PSI
1	2	EA			30" 3R HORIZONTAL FITTING		CP TEST STATION TYPE 1	5. ADDITIONAL WARNING SIGNS MAY BE REQUIRED AS DICTATED BY CONSTRUCTION CONTRACT.		4	APPROVAL							DESIGN PRESSURE 1440 PSI
PIPE ASSEMBLIES		CONTINUOUS CONCRETE COATING		PIPE COATING DATA		SPECIAL NOTES		ENVIRONMENTAL DATA		APPROVALS		APPROVALS						
QTY	UOM	DESCRIPTION	QTY	UOM	RECN NUMBER	MATERIAL NUMBER	DESCRIPTION	6. MAP PROJECTION: NAD 1983 HARN STATE PLANE FLORIDA EAST FIPS 0801 FEET, VERTICAL DATUM: NAVD 83.		5	APPROVAL							DESIGN PRESSURE 1440 PSI
PIPE COATING DATA		CONTINUOUS CONCRETE COATING		PIPE COATING DATA		SPECIAL NOTES		ENVIRONMENTAL DATA		APPROVALS		APPROVALS						
PIPE COATING: 14 MIL MINIMUM FBE AND 24 MIL MINIMUM ARD		CONTINUOUS CONCRETE COATING: STANDARD FOR 36" / 30" PIPELINE		PIPE COATING DATA		SPECIAL NOTES		ENVIRONMENTAL DATA		APPROVALS		APPROVALS						
SOUTH WELD COATING: 2 PART EPOXY		CONTINUOUS CONCRETE COATING: STANDARD FOR 36" / 30" PIPELINE		PIPE COATING DATA		SPECIAL NOTES		ENVIRONMENTAL DATA		APPROVALS		APPROVALS						
INTERNAL COATING (YES/NO): NO		CONTINUOUS CONCRETE COATING: STANDARD FOR 36" / 30" PIPELINE		PIPE COATING DATA		SPECIAL NOTES		ENVIRONMENTAL DATA		APPROVALS		APPROVALS						

FLORIDA SOUTHEAST CONNECTION PROJECT  
 ST. LUCIE COUNTY, FLORIDA  
 ALIGNMENT SHEET 1  
 SCALE: 1" = 200'  
 21040-510-ALS-00125  
 REV. 1  
 SHEET 125



SURVEY DATA		STATIONING	
MATCHLINE 6000+00	MATCHLINE 6055+00	6000+00	6055+00
<p>4021 EVANS PROPERTIES, INC. 5000 FT. 6000+00 TO 6055+00</p>			
<p>GROUND PROFILE</p>			
<p>SCALE: 1" = 200'</p>			
<p>ST. LUCIE COUNTY, FLORIDA</p>			
<p>DISCLAIMER: UNIVERSALPEGASUS INTERNATIONAL MAKES NO WARRANTY EXPRESSED, IMPLIED OR OTHERWISE THAT THE INFORMATION CONTAINED HEREIN IS ACCURATE OR COMPLETE AS TO ANY AND ALL SUBSURFACE CONDITIONS AND CONFORMATION. ANY RELIANCE CONTRACTOR PLACES ON THE INFORMATION CONTAINED HEREIN AS TO SUCH CONDITIONS, IS DONE SO AT ITS OWN RISK AND EXPENSE. IT IS THE SOLE RESPONSIBILITY OF THE CONTRACTOR TO CONTACT THE STATE 'ONE CALL' SYSTEM PRIOR TO ANY EXCAVATION.</p>			
ENGINEERING DATA		MATERIAL	
13-70' SBW 11.5 CC	13-74' SBW 11.5 CC	13-74' SBW 11.5 CC	13-74' SBW 11.5 CC
6000+00	6000+00	6000+00	6000+00
<p>CLASSIFICATION: Class 1</p>			
<p>21040-505-HDW-12001</p>			
ENVIRONMENTAL DATA		STATIONS	
6000+00	6055+00	6000+00	6055+00
<p>ENVIRONMENTAL DATA TABLE</p>			

BILL OF MATERIALS				MISCELLANEOUS MATERIALS				TYPICAL DRAWINGS				GENERAL INFORMATION								
TEM NO.	QTY	UOM	DESCRIPTION	QTY	UOM	DESCRIPTION	DWG/FIELD BOOK NO.	TITLE	1.	THE MINIMUM DEPTH OF COVER FOR THE PROJECT IS 36 INCHES. ADDITIONAL DEPTH OF COVER IS REQUIRED FOR ROAD AND WATERBODY CROSSINGS, AND IS TO BE IN ACCORDANCE WITH REFERENCED PERMIT DRAWINGS, SITE SPECIFIC DRAWINGS, OR CONSTRUCTION SPECIFICATIONS, WHICHEVER IS MORE STRINGENT.	2.	THE BOUNDARIES OF ALL WORK AREAS WILL BE CLEARLY MARKED AND ALL WORK SHALL REMAIN WITHIN THE DESIGNATED WORK AREA.	3.	THE REQUIRED STATE ONE CALL NOTIFICATION IS THE RESPONSIBILITY OF THE CONSTRUCTION CONTRACTOR.	4.	THE CONTRACTOR SHALL ACCESS THE WORK AREA USING ONLY PUBLIC ROADS AND APPROVED ACCESS ROADS.	5.	ADDITIONAL WARNING SIGNS MAY BE REQUIRED AS DICTATED BY THE CONSTRUCTION CONTRACT.	6.	MAP PROJECTION: NAD 1983 HARN STATE PLANE FLORIDA EAST FIPS 8061 FEET, VERTICAL DATUM: NAVD 83.
1	4381	FT	30" O.D. x 0.429" WT. API 5L X70 PSL2 CSW 14-18 MILS FBE	0	EA	SET ON WEIGHTS	21040-510-TYP-2001	CATHODIC PROTECTION STD. SINGLE POINT TEST STATION, TYPE 1	1.	INDUCTION BEND QUANTITIES ALONG WITH THEIR DESCRIPTIONS ARE LOCATED ON DRAWING 21040-SSE-EW-00001.	2.	SEE AERK DRAWING PACKAGE FOR ANODE BED DEEP WELL.	<p><b>SPECIAL NOTES</b></p>							
2	538	FT	30" O.D. x 0.617" WT. API 5L X70 PSL2 CSW 14-18 MILS FBE & AL-30 MILS GARD	0	EA	WARNING SIGNS	21040-510-TYP-2002	CATHODIC PROTECTION STD. FOREIGN PIPELINE CROSSING TEST STATION, TYPE 2	<p><b>LEGEND</b></p>				<p><b>REVISIONS</b></p>							
3	80	FT	30" O.D. x 0.514" WT. API 5L X70 PSL2 CSW 14-18 MILS FBE	0	EA	CP TEST STATION TYPE 1	21040-510-TYP-2003	FOREIGN PIPELINE CROSSING TEST STATION, TYPE 2	<p><b>APPROVALS</b></p>											
<p><b>FITTINGS SUMMARY</b></p>				<p><b>CONTINUOUS CONCRETE COATING</b></p>				<p><b>PIPE COATING DATA</b></p>				<p><b>ENVIRONMENTAL DATA</b></p>								
1	EA		8" SR VERTICAL FITTING	0	EA	ANODE BED DEEP WELL	21040-510-TYP-2012	CONTINUOUS CONCRETE COATING STANDARD FOR 36"/30" PIPELINE	<p><b>REVISIONS</b></p>				<p><b>APPROVALS</b></p>							
<p><b>PIPE ASSEMBLIES</b></p>				<p><b>PIPE COATING DATA</b></p>				<p><b>REVISIONS</b></p>				<p><b>APPROVALS</b></p>								
QTY	UOM	DESCRIPTION		QTY	UOM	DESCRIPTION		21040-510-TYP-2013	<p><b>REVISIONS</b></p>				<p><b>APPROVALS</b></p>							
1	EA	INTERNAL COATING (YES/NO): NO		21040-510-TYP-2014	<p><b>REVISIONS</b></p>				<p><b>APPROVALS</b></p>				<p><b>APPROVALS</b></p>							

SCALE: 1" = 200'

21040-510-ALS-00126

FLORIDA SOUTHEAST CONNECTION PROJECT

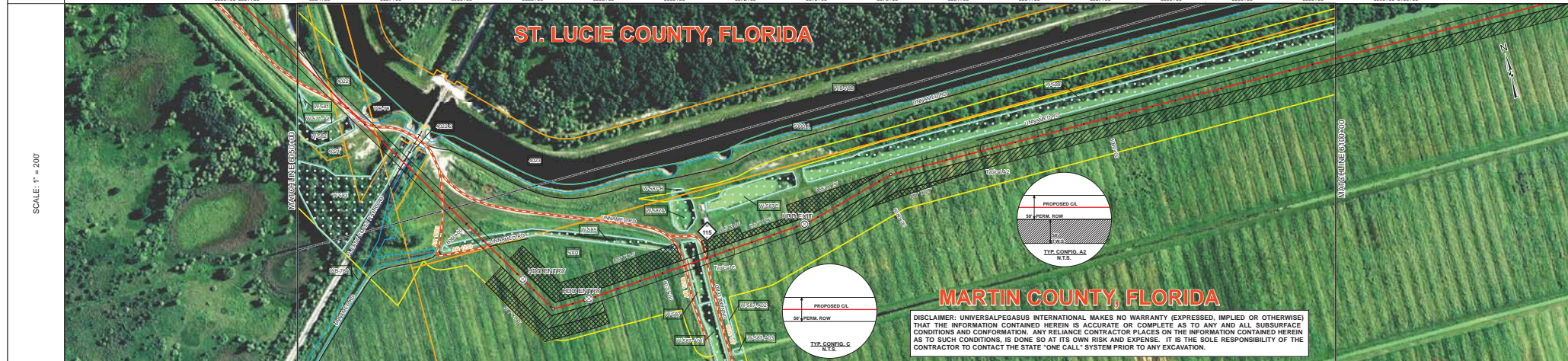
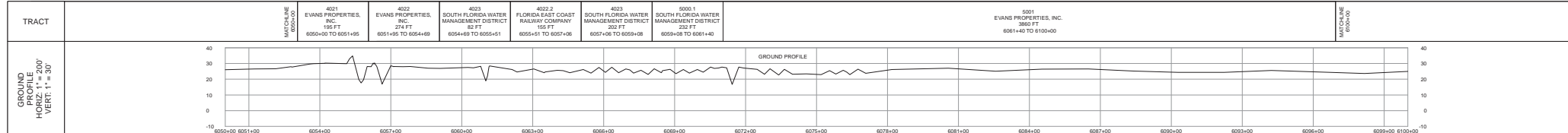
ST. LUCIE COUNTY, FLORIDA

ALIGNMENT SHEET 1

UNIVERSALPEGASUS INTERNATIONAL

FLORIDA SOUTHEAST CONNECTION

REV. 1



**DISCLAIMER:** UNIVERSALPEGASUS INTERNATIONAL MAKES NO WARRANTY (EXPRESSED, IMPLIED OR OTHERWISE) THAT THE INFORMATION CONTAINED HEREIN IS ACCURATE OR COMPLETE AS TO ANY AND ALL SUBSURFACE CONDITIONS AND CONFORMATION. ANY RELIANCE CONTRACTOR PLACES ON THE INFORMATION CONTAINED HEREIN AS TO SUCH CONDITIONS, IS DONE SO AT ITS OWN RISK AND EXPENSE. IT IS THE SOLE RESPONSIBILITY OF THE CONTRACTOR TO CONTACT THE STATE "ONE CALL" SYSTEM PRIOR TO ANY EXCAVATION.

SURVEY DATA		STATIONING	
MATCHLINE 6050+00		MATCHLINE 6050+00	
MATCHLINE 6100+00		MATCHLINE 6100+00	
ENGINEERING DATA		MATERIAL	
REFERENCE DRAWING		21040-440-PMW-10002 21040-505-HDW-12001	
CLASSIFICATION		SEE REF DWG	
MINIMUM DEPTH OF COVER		SEE REF DWG	
CATHODIC PROTECTION		SEE REF DWG	
WATERBODIES/WETLAND CROSSINGS		SEE REF DWG	
WATERBODIES/WETLAND LENGTH		SEE REF DWG	
ENVIRONMENTAL DATA		STATIONS	
PERMIT/REGULATION CONTROL		EROSION CONTROL CODE	
CONSTRAINT 1		BULKY DEBRIS CODE	
CONSTRAINT 2		TOPSOIL SALVAGE	
CONSTRAINT 3		THREATENED AND ENDANGERED SPECIES	
CONSTRAINT 4		TRAILING CONSTRAINT	
		CONSTRAINT 5	
		CONSTRAINT 6	

BILL OF MATERIALS				MISCELLANEOUS MATERIALS				TYPICAL DRAWINGS				GENERAL INFORMATION								
ITEM NO.	QTY	UOM	DESCRIPTION	QTY	UOM	DESCRIPTION	DWG/FIELD BOOK NO.	TITLE	1.	THE MINIMUM DEPTH OF COVER FOR THE PROJECT IS 36 INCHES. ADDITIONAL DEPTH OF COVER IS REQUIRED FOR ROAD AND WATERBODY CROSSINGS AND IS TO BE IN ACCORDANCE WITH REFERENCED PERMIT DRAWINGS, SITE SPECIFIC DRAWINGS, OR CONSTRUCTION SPECIFICATIONS, WHICHEVER IS MORE STRINGENT.	2.	THE BOUNDARIES OF ALL WORK AREAS WILL BE CLEARLY MARKED AND ALL WORK SHALL REMAIN WITHIN THE DESIGNATED WORK AREA.	3.	THE REQUIRED STATE ONE CALL NOTIFICATION IS THE RESPONSIBILITY OF THE CONSTRUCTION CONTRACTOR.	4.	THE CONTRACTOR SHALL ACCESS THE WORK AREA USING ONLY PUBLIC ROADS AND APPROVED ACCESS ROADS.	5.	ADDITIONAL WARNING SIGNS MAY BE REQUIRED AS DICTATED BY CONSTRUCTION CONTRACT.	6.	MAP PROJECTION: NAD 1983 HARN STATE PLANE FLORIDA EAST TIPS 0801 FEET. VERTICAL DATUM: NAVD 83.
7.	2462	FT	30" O.D. x 0.429 W.T. - API 5L X70, F152, DRAM, 14-16 MILS FBE	0	EA	SET ON WEIGHTS	21040-510-TYP-20001	CATHODIC PROTECTION STD. SINGLE POINT TEST STATION, TYPE 1	7.	THE REQUIRED STATE ONE CALL NOTIFICATION IS THE RESPONSIBILITY OF THE CONSTRUCTION CONTRACTOR.	8.	ADDITIONAL WARNING SIGNS MAY BE REQUIRED AS DICTATED BY CONSTRUCTION CONTRACT.	9.	MAP PROJECTION: NAD 1983 HARN STATE PLANE FLORIDA EAST TIPS 0801 FEET. VERTICAL DATUM: NAVD 83.						
8.	2298	FT	30" O.D. x 0.617 W.T. - API 5L X70, F152, DRAM, 14-16 MILS FBE & 4L-30 MILS G.A.D.	2	EA	PIPELINE MARKERS	21040-510-TYP-20002	CATHODIC PROTECTION STD. FOREIGN PIPELINE CROSSING TEST STATION, TYPE 2	10.	INDUCTION BEND QUANTITIES ALONG WITH THEIR DESCRIPTIONS ARE LOCATED ON DRAWING 21040-SIG-FW-00000.										
9.	240	FT	30" O.D. x 0.514 W.T. - API 5L X70, F152, DRAM, 14-16 MILS FBE	1	EA	WARNING SIGNS	21040-510-TYP-20003	CP TEST STATION TYPE 1	11.	SEE ARK DRAWING PACKAGE FOR ANODE BED DEEP WELL.										
				1	EA	CP TEST STATION TYPE 2	21040-510-TYP-20012	CONTINUOUS CONCRETE COATING STANDARD FOR 36" / 30" PIPELINE												
				1	EA	AERIAL MARKERS	21040-510-TYP-20013	CONTINUOUS CONCRETE COATING STANDARD FOR 36" / 30" PIPELINE												
				0	EA	ANODE BED DEEP WELL	21040-510-TYP-20014	WARNING SIGN DETAIL												
				0	EA		21040-510-TYP-20015	AERIAL MARKER INSTALLATION DETAIL												
				0	EA		21040-510-TYP-20016	AERIAL MARKER DETAIL												
				0	EA		21040-510-TYP-20017	TYPICAL PIPELINE MARKER ASSEMBLY												
				0	EA		21040-510-TYP-20018	PIPELINE MARKER "WARNING" DECAL												

LEGEND			
	PIPELINE ROUTE		FENCE
	LINE PIPE		TELEPHONE LINE
	18" IR AND W		WATER LINE
	TRANSITION PIPE		SEWER LINE
	GAS LINE		BURIED CABLE
	SETON POLES		UTILITY LINE
	WARNING SIGNS		AERIAL PIPELINE
	MATERIAL ITEM		AERIAL PIPELINE
	AERIAL MARKER		FOREIGN PIPELINE
	CP TEST STATION		HIGHWAY ROAD
	18" IR W/ 1" CV		PRIVATE ACCESS ROAD
	PIPELINE MARKER		COUNTY BOUNDARY
	PIPELINE WELLPOST		ROW PARCEL
	ANODE BED DEEP WELL		PLUS SECTION LINE
			TRAP
			WATER WELL
			MUD ENTRY/EXIT

REVISIONS				APPROVALS			
NO.	DESCRIPTION	DATE	REV BY	CHK BY	APP BY	DRAWN BY	MB
1	IFC (UPDATE ENV. RE-ROUTES, FOOT-PRINT)	2016-04-08	MB	MJ	RG	PROJECT MANAGER	RG
2	ISSUED FOR CONSTRUCTION	2015-12-15	MB	MJ	RG	PROJECT DEF. NO.	RG
APPROVAL				COMPANY			
ENVIRONMENTAL				LAND			
FLORIDA SOUTHEAST CONNECTION PROJECT 21040-510-ALS-00127 FLORIDA SOUTHEAST CONNECTION ALIGNMENT SHEET ST. LUCIE AND MARTIN COUNTIES, FLORIDA SCALE: 1" = 200' 21040-510-ALS-00127 REV. 1							