

SURVEY DATA		STATIONING	
MATCHLINE 5600+00	4007 1 SM PIONEER PROPERTIES, LLC 503 FT 5600+00 TO 5605+43	4008 SM PIONEER PROPERTIES, LLC 427 FT 5605+43 TO 5646+90	4008 4 SM PIONEER PROPERTIES, LLC 510 FT 5646+90 TO 5650+00
MATCHLINE 5600+00		MATCHLINE 5650+00	
ENGINEERING DATA		MATERIAL	
REFERENCE DRAWING		22-769 SBW 19.5 CC	19-769 SBW 19.5 CC
CLASS LOCATION		5000	5000
MINIMUM DEPTH OF COVER			
INSTALLATION CATHODIC PROTECTION			
INTERSECTION/WETLAND CROSSINGS			
INTERSECTION/WETLAND LENGTH			
ENVIRONMENTAL DATA		STATIONS	
PERMIT/REGULATORY CONTROL			
EROSION CONTROL CODE			
TRUCK WASHING CODE			
TOPSOIL SALVAGE			
THREATENED AND ENDANGERED SPECIES			
TRUCK CONSTRAINT			
CONSTRAINT 1			
CONSTRAINT 2			
CONSTRAINT 3			
CONSTRAINT 4			

BILL OF MATERIALS				MISCELLANEOUS MATERIALS				TYPICAL DRAWINGS				GENERAL INFORMATION			
ITEM NO.	QTY	UOM	DESCRIPTION	QTY	UOM	REIN. NUMBER	DESCRIPTION	DWG/FIELD BOOK NO.	TITLE	1.	2.	3.	4.	5.	
Z	5000	FT	30" O.D. x 0.429 W.T. API 5L X70 F155 DSW, 14-16 MILS FBE							1. THE MINIMUM DEPTH OF COVER FOR THE PROJECT IS 36 INCHES. ADDITIONAL DEPTH OF COVER IS REQUIRED FOR ROAD AND WATERBODY CROSSINGS, AND IS TO BE IN ACCORDANCE WITH REFERENCED PERMIT DRAWINGS, SITE SPECIFIC DRAWINGS, OR CONSTRUCTION SPECIFICATIONS, WHICHEVER IS MORE STRINGENT.	2. THE BOUNDARIES OF ALL WORK AREAS WILL BE CLEARLY MARKED AND ALL WORK SHALL REMAIN WITHIN THE DESIGNATED WORK AREA.	3. THE REQUIRED STATE ONE CALL NOTIFICATION IS THE RESPONSIBILITY OF THE CONSTRUCTION CONTRACTOR.	4. THE CONTRACTOR SHALL ACCESS THE WORK AREA USING ONLY PUBLIC ROADS AND APPROVED ACCESS ROADS.	5. ADDITIONAL WARNING SIGNS MAY BE REQUIRED AS DICTATED BY CONSTRUCTION CONTRACT.	
										6. MAP PROJECTION: NAD 1983 HARN STATE PLANE FLORIDA EAST TIPS 0801 FEET, VERTICAL DATUM: NAD 83.					

FITTINGS SUMMARY				CONTINUOUS CONCRETE COATING				PIPE COATING DATA			
ITEM NO.	QTY	UOM	DESCRIPTION	QTY	UOM	REIN. NUMBER	DESCRIPTION	QTY	UOM	DESCRIPTION	
										PIPE COATING: 14 MIL MINIMUM FBE AND 24 MIL MINIMUM ARO	
										SOFT WELD COATING: 2 PART EPOXY	
										INTERNAL COATING (YES/NO): NO	

LEGEND

- PIPELINE ROUTE
- EDGE PIPE
- LINE PIPE
- MANHOLE
- WATERLINE
- SEWER LINE
- UTILITY LINE
- GENERAL WETLAND
- FORESTED WETLAND
- WATERBODY
- ROAD
- RAILROAD
- POWER LINE
- ROAD BOUNDARY
- ROW PARCEL
- PLUS SECTION LINE
- TRAIL
- WATER WELL
- NO DRAIN/OUT

REVISIONS

NO.	DESCRIPTION	DATE	REV BY	CHK BY	APP BY
1	IFC (UPDATE ENV. RE-ROUTES, FOOT-PRINT)	2016-04-08	MB	MJ	RG
0	ISSUED FOR CONSTRUCTION	2015-12-15	MB	MJ	RG

APPROVALS

DRAWN BY:	MB	CONSTRUCTION PERMIT NO.
CHECKED BY:	MJ	MAINTENANCE OPERATION REGION
PROJECT MANAGER:	RG	MIN. TEST PRESSURE: 1816 PSI
PROJECT DEF. NO.:		DESIGN PRESSURE: 1440 PSI

1 INCH = 200 FT

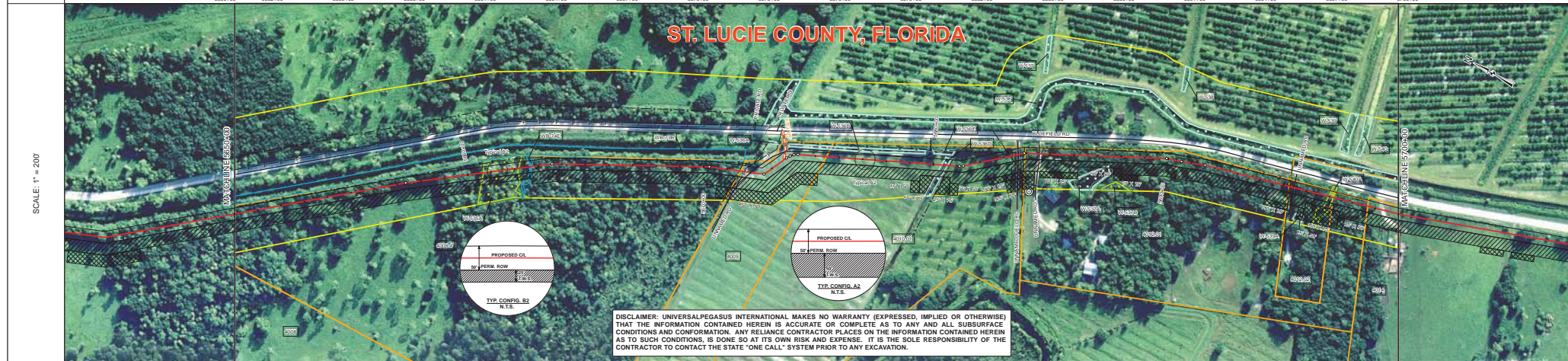
FLORIDA SOUTHEAST CONNECTION PROJECT
ST. LUCIE COUNTY, FLORIDA

FLORIDA SOUTHEAST CONNECTION
ALIGNMENT SHEET 1
ST. LUCIE COUNTY, FLORIDA

SCALE: 1" = 200'
21040-510-ALS-00118

REV. 1

TRACT	4008.4 SM PIONEER PROPERTIES, LLC 2165 FT 5650+00 TO 5671+66	4009 JAMES R. TURNER 390 FT 5671+66 TO 5675+46	4010.01 ALDERMAN HOLDINGS, LLLP 847 FT 5675+46 TO 5683+93	4012.01 DANIELLE MOORE 1153 FT 5683+93 TO 5685+24	4012.02 MICHAEL B. HALL AND PATRICIA L. HALL 151 FT 5685+24 TO 5687+15	4012.01 DANIELLE MOORE 162 FT 5687+15 TO 5688+67	4014 D & B, INC. 133 FT 5688+67 TO 5700+00
-------	---	---	--	--	--	---	---



SURVEY DATA	STATIONING	MATCHLINE 5650+00	MATCHLINE 5700+00
ENGINEERING DATA	MATERIAL	MATCHLINE 5650+00	MATCHLINE 5700+00
ENVIRONMENTAL DATA	STATIONS	MATCHLINE 5650+00	MATCHLINE 5700+00

BILL OF MATERIALS		MISCELLANEOUS MATERIALS		TYPICAL DRAWINGS		GENERAL INFORMATION	
ITEM NO.	QTY	UOM	RECN NUMBER	MATERIAL NUMBER	DESCRIPTION	DWG/FIELD BOOK NO.	TITLE
1	5000	FT			30" O.D. x 0.429 W.T. API 5L X70 PSL2 DSAM, 14-16 MILS FBE		1. THE MINIMUM DEPTH OF COVER FOR THE PROJECT IS 36 INCHES. ADDITIONAL DEPTH OF COVER IS REQUIRED FOR ROAD AND WATERBODY CROSSINGS AND IS TO BE IN ACCORDANCE WITH REFERENCED PERMIT DRAWINGS, SITE SPECIFIC DRAWINGS, OR CONSTRUCTION SPECIFICATIONS, WHICHEVER IS MORE STRINGENT.
FITTINGS SUMMARY		CONTINUOUS CONCRETE COATING		PIPE COATING DATA		SPECIAL NOTES	
ITEM NO.	QTY	UOM	RECN NUMBER	MATERIAL NUMBER	DESCRIPTION	DESCRIPTION	
1	EA				48" 3R HORIZONTAL FITTING	PIPE COATING: 14 MIL MINIMUM FBE AND 24 MIL MINIMUM ARO	1. INDUCTION BEND QUANTITIES ALONG WITH THEIR DESCRIPTIONS ARE LOCATED ON DRAWING 21040-SSE-FW-00001.
QTY	UOM	DESCRIPTION				INTERNAL COATING (YES/NO): NO	2. SEE ARK DRAWING PACKAGE FOR ANODE BED DEEP WELL.

LEGEND

- PIPELINE ROUTE
- FENCE
- UTILITY LINE
- WATERLINE
- SEWER LINE
- BURIED CABLE
- UTILITY POLE
- UTILITY TOWER
- FORECAST WEATHER
- WATERBODY
- WATERWAY
- ROADWAY
- ROADWAY RIGHT-OF-WAY
- ROADWAY CENTERLINE
- ROADWAY EDGE
- ROADWAY DRAINAGE
- ROADWAY LIGHTING
- ROADWAY SIGNAGE
- ROADWAY STRUCTURE
- ROADWAY TOWER
- ROADWAY WIRE
- ROADWAY WATER
- ROADWAY WIRELESS
- ROADWAY WIRELESS TOWER
- ROADWAY WIRELESS ANTENNA
- ROADWAY WIRELESS ANTENNA TOWER
- ROADWAY WIRELESS ANTENNA TOWER WITH WIRELESS ANTENNA
- ROADWAY WIRELESS ANTENNA TOWER WITH WIRELESS ANTENNA AND WIRELESS TOWER
- ROADWAY WIRELESS ANTENNA TOWER WITH WIRELESS ANTENNA AND WIRELESS TOWER AND WIRELESS ANTENNA
- ROADWAY WIRELESS ANTENNA TOWER WITH WIRELESS ANTENNA AND WIRELESS TOWER AND WIRELESS ANTENNA AND WIRELESS ANTENNA
- ROADWAY WIRELESS ANTENNA TOWER WITH WIRELESS ANTENNA AND WIRELESS TOWER AND WIRELESS ANTENNA AND WIRELESS ANTENNA AND WIRELESS ANTENNA

REVISIONS

NO.	DESCRIPTION	DATE	REV BY	CHK BY	APP BY
1	IFC (UPDATE ENV. RE-ROUTES, FOOT-PRINT)	2016-04-08	MB	MJ	RG
2	ISSUED FOR CONSTRUCTION	2015-12-15	MB	MJ	RG

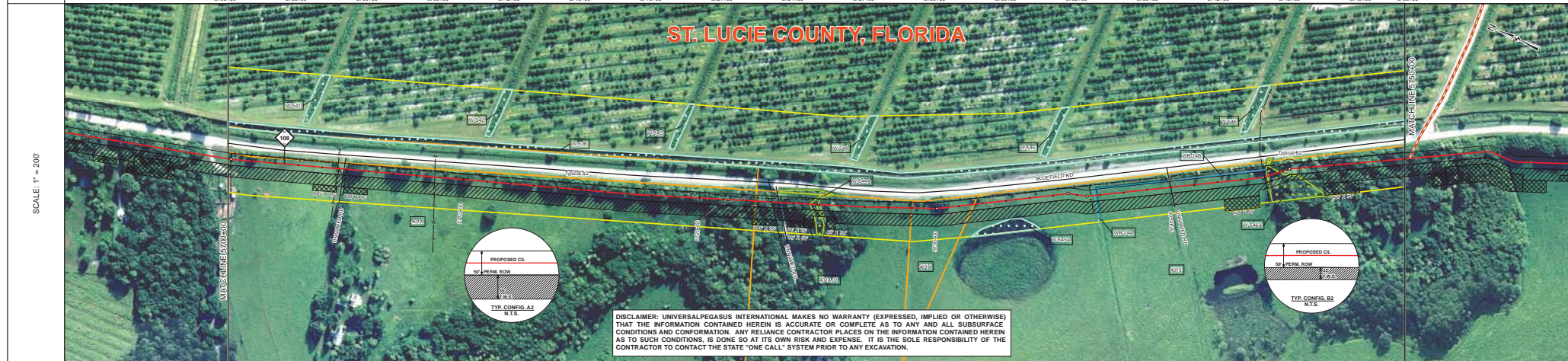
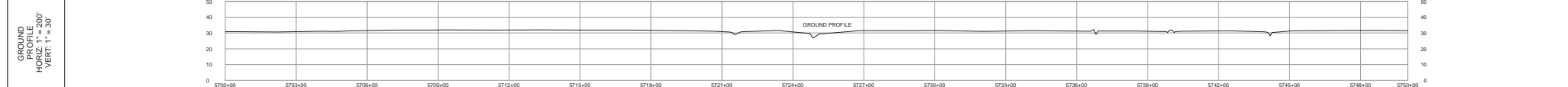
APPROVALS

CONSTRUCTION PERMIT NO.	DESIGN PRESSURE	1816	PSI
MAINTENANCE OPERATION REGION	DESIGN PRESSURE	1440	PSI

FLORIDA SOUTHEAST CONNECTION PROJECT
 21040-SSE-FW-00119 DISCIPLINE: 03
FLORIDA SOUTHEAST CONNECTION ALIGNMENT SHEET 1
ST. LUCIE COUNTY, FLORIDA

SCALE: 1" = 200' 21040-510-ALS-00119 REV. 1

TRACT	4074 D & B, INC. 2297 FT 5700+00 TO 5722+39	4074.01 SANDRA F. SELASWAGE 683 FT 5722+39 TO 5728+99	4074 D & B, INC. 584 FT 5728+99 TO 5731+63	4015 SYLVIA RODRIGUEZ, DANIELA RODRIGUEZ, DIEGO R. RODRIGUEZ, SYLVIA M. RODRIGUEZ, AND ROSSANA I. RODRIGUEZ 1937 FT 5731+63 TO 5750+00
-------	--	--	---	---

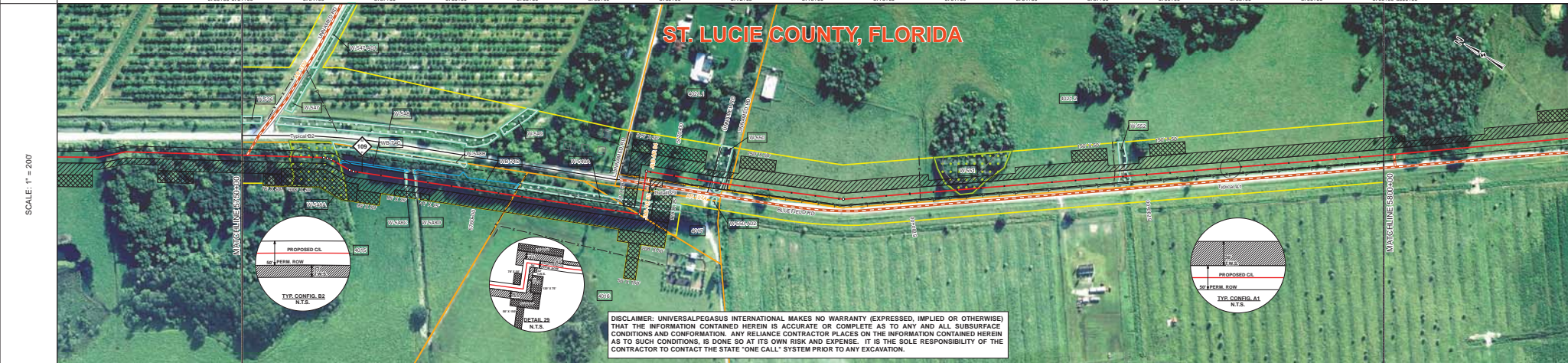
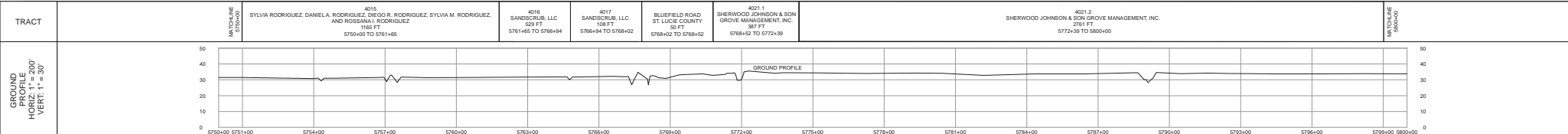


DISCLAIMER: UNIVERSALPEGASUS INTERNATIONAL MAKES NO WARRANTY (EXPRESSED, IMPLIED OR OTHERWISE) THAT THE INFORMATION CONTAINED HEREIN IS ACCURATE OR COMPLETE AS TO ANY AND ALL SUBSURFACE CONDITIONS AND CONFORMATION. ANY RELIANCE CONTRACTOR PLACES ON THE INFORMATION CONTAINED HEREIN AS TO SUCH CONDITIONS, IS DONE SO AT ITS OWN RISK AND EXPENSE. IT IS THE SOLE RESPONSIBILITY OF THE CONTRACTOR TO CONTACT THE STATE "ONE CALL" SYSTEM PRIOR TO ANY EXCAVATION.

SURVEY DATA	STATIONING	MATERIAL	ENVIRONMENTAL DATA
<p>STATIONING</p> <p>5700+00 5703+00 5706+00 5709+00 5712+00 5715+00 5718+00 5721+00 5724+00 5727+00 5730+00 5733+00 5736+00 5739+00 5742+00 5745+00 5748+00 5750+00</p>	<p>STATIONING</p> <p>5700+00 5703+00 5706+00 5709+00 5712+00 5715+00 5718+00 5721+00 5724+00 5727+00 5730+00 5733+00 5736+00 5739+00 5742+00 5745+00 5748+00 5750+00</p>	<p>MATERIAL</p> <p>10-768 BSW / 11.6 CC 6-768 BSW / 10.6 CC 15-768 BSW / 11.6 CC</p>	<p>ENVIRONMENTAL DATA</p> <p>STATIONS</p> <p>5721+18, 5721+91, 5722+98, 5723+48, 5724+68, 5724+81, 5724+85, 5724+98, 5724+110, 5724+98, 5724+111, 5724+98, 5724+110</p>

BILL OF MATERIALS				MISCELLANEOUS MATERIALS				TYPICAL DRAWINGS				GENERAL INFORMATION					
ITEM NO.	QTY	UOM	DESCRIPTION	QTY	UOM	DESCRIPTION	QTY	UOM	DESCRIPTION	QTY	UOM	DESCRIPTION	1.	2.	3.	4.	5.
1	5000	FT	30" O.D. x 0.429 W.T. API 5L X70 F42, BSW, 14-16 MILS FBE										1. THE MINIMUM DEPTH OF COVER FOR THE PROJECT IS 36 INCHES. ADDITIONAL DEPTH OF COVER IS REQUIRED FOR ROAD AND WATERBODY CROSSINGS, AND IS TO BE IN ACCORDANCE WITH REFERENCED PERMIT DRAWINGS, SITE SPECIFIC DRAWINGS, OR CONSTRUCTION SPECIFICATIONS, WHICHEVER IS MORE STRINGENT.	2. THE BOUNDARIES OF ALL WORK AREAS WILL BE CLEARLY MARKED AND ALL WORK SHALL REMAIN WITHIN THE DESIGNATED WORK AREA.	3. THE REQUIRED STATE ONE CALL NOTIFICATION IS THE RESPONSIBILITY OF THE CONSTRUCTION CONTRACTOR.	4. THE CONTRACTOR SHALL ACCESS THE WORK AREA USING ONLY PUBLIC ROADS AND APPROVED ACCESS ROADS.	5. ADDITIONAL WARNING SIGNS MAY BE REQUIRED AS DICTATED BY CONSTRUCTION CONTRACT.
FITTINGS SUMMARY				CONTINUOUS CONCRETE COATING				PIPE COATING DATA				SPECIAL NOTES					
PIPE ASSEMBLIES				PIPE ASSEMBLIES				PIPE ASSEMBLIES				1. INDUCTION BEND QUANTITIES ALONG WITH THEIR DESCRIPTIONS ARE LOCATED ON DRAWING 21040-SIS-FW-00001. 2. 'A' - SEE AEM DRAWING PACKAGE FOR ANODE BED DEEP WELL.					

REVISIONS				APPROVALS			
NO.	DESCRIPTION	DATE	REV BY	CHK BY	APP BY	MB	CONSTRUCTION PERMIT NO.
1	IFC (UPDATE ENV. RE-ROUTES, FOOT-PRINT)	2016-04-08	MB	MJ	RG	MB	MAINTENANCE OPERATION REGION
0	ISSUED FOR CONSTRUCTION	2015-12-15	MB	MJ	RG	MB	MIN. TEST PRESSURE 1816 PSI
APPROVAL COMPANY				PROJECT DEF. NO.			
<p>FLORIDA SOUTHEAST CONNECTION PROJECT</p> <p>STL 21040-SIS-0120 DISCIPLINE 03</p> <p>FLORIDA SOUTHEAST CONNECTION ALIGNMENT SHEET 1 ST. LUCIE COUNTY, FLORIDA</p> <p>SCALE: 1" = 200' 21040-SIS-AL0-0120 REV. 1 SHEET 120</p>							



DISCLAIMER: UNIVERSALPEGASUS INTERNATIONAL MAKES NO WARRANTY (EXPRESSED, IMPLIED OR OTHERWISE) THAT THE INFORMATION CONTAINED HEREIN IS ACCURATE OR COMPLETE AS TO ANY AND ALL SUBSURFACE CONDITIONS AND CONFORMATION. ANY RELIANCE CONTRACTOR PLACES ON THE INFORMATION CONTAINED HEREIN AS TO SUCH CONDITIONS, IS DONE SO AT ITS OWN RISK AND EXPENSE. IT IS THE SOLE RESPONSIBILITY OF THE CONTRACTOR TO CONTACT THE STATE "ONE CALL" SYSTEM PRIOR TO ANY EXCAVATION.

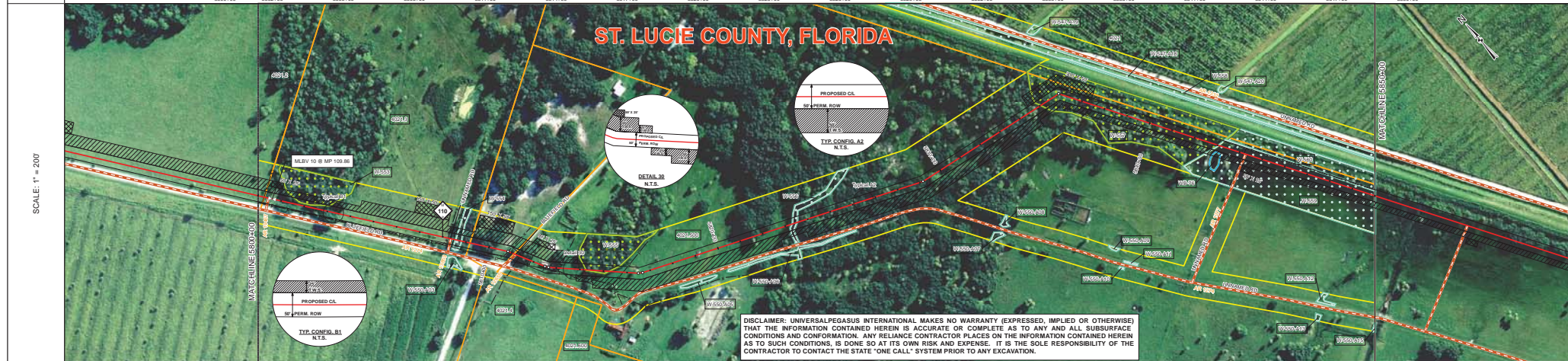
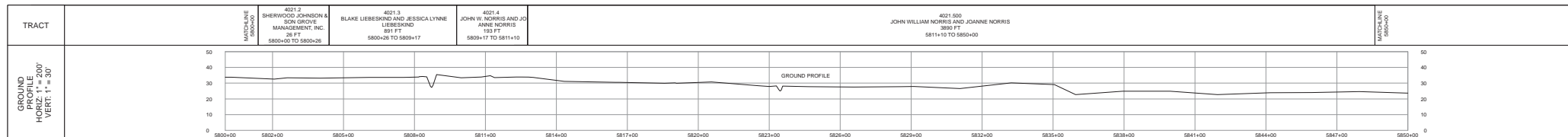
SURVEY DATA		STATIONING	
MATCHLINE 5750+00	SYLVIA RODRIGUEZ, DANIELA A. RODRIGUEZ, DIEGO R. RODRIGUEZ, SYLVIA M. RODRIGUEZ, AND ROSAMUND RODRIGUEZ 4015 ANDROS BLVD 1160 FT 5750+00 TO 5761+65	MATCHLINE 5750+00	5750+00 TO 5761+65
MATCHLINE 5761+65	4016 SANDS CRUISE, LLC 168 FT 5761+65 TO 5768+94	MATCHLINE 5761+65	5761+65 TO 5768+94
MATCHLINE 5768+94	4017 SANDS CRUISE, LLC 168 FT 5768+94 TO 5776+02	MATCHLINE 5768+94	5768+94 TO 5776+02
MATCHLINE 5776+02	BLUEFIELD ROAD ST. LUCIE COUNTY, FL 50 FT 5768+02 TO 5784+02	MATCHLINE 5776+02	5776+02 TO 5784+02
MATCHLINE 5784+02	SHERWOOD JOHNSON & SON GROVE MANAGEMENT, INC. 307 FT 5784+02 TO 5772+39	MATCHLINE 5784+02	5772+39 TO 5784+02
MATCHLINE 5784+02	SHERWOOD JOHNSON & SON GROVE MANAGEMENT, INC. 281 FT 5772+39 TO 5800+00	MATCHLINE 5784+02	5772+39 TO 5800+00

BILL OF MATERIALS		MISCELLANEOUS MATERIALS		TYPICAL DRAWINGS		GENERAL INFORMATION	
ITEM NO.	QTY	REIN. NUMBER	DESCRIPTION	QTY	UOM	DWG/FIELD BOOK NO.	TITLE
1	4289	FT	30" O.D. x 0.429" W.T. API 5L X70 F502 DS4W, 14.18 MILS FBE	EA		21040-510-TYP-2001	CATHODIC PROTECTION STD. SINGLE POINT TEST STATION, TYPE 1
2	80	FT	30" O.D. x 0.617" W.T. API 5L X70 F502 DS4W, 14.18 MILS FBE & AL-30 MILS SARD	EA		21040-510-TYP-2002	CATHODIC PROTECTION STD. FOREIGN PIPELINE CROSSING TEST STATION, TYPE 2
3	801	FT	30" O.D. x 0.514" W.T. API 5L X70 F502 DS4W, 14.18 MILS FBE	EA		21040-510-TYP-2013	CONTINUOUS CONCRETE COATING STANDARD FOR 36"/30" PIPELINE

FITTINGS SUMMARY		CONTINUOUS CONCRETE COATING		PIPE COATING DATA			
ITEM NO.	QTY	REIN. NUMBER	DESCRIPTION	QTY	UOM	REIN. NUMBER	DESCRIPTION
1	2	EA	30" 3R HORIZONTAL FITTING				PIPE COATING: 14 MIL MINIMUM FBE AND 24 MIL MINIMUM ARO
							SMITH WELD COATING: 2 PART EPOXY
							INTERNAL COATING (YES/NO): NO

REVISIONS		APPROVALS	
NO.	DESCRIPTION	DATE	REV BY
1	IFC (UPDATE ENV. RE-ROUTES, FOOT-PRINT)	2016-04-08	MB MJ
2	ISSUED FOR CONSTRUCTION	2015-12-15	MB MJ

FLORIDA SOUTHEAST CONNECTION PROJECT
 STA: 5750+00 TO 5800+00
 DISCIPLINE: 03
FLORIDA SOUTHEAST CONNECTION ALIGNMENT SHEET 1
 ST. LUCIE COUNTY, FLORIDA
 SCALE: 1" = 200'
 21040-510-ALS-00121
 REV. 1
 SHEET 121



SURVEY DATA		STATIONING	
MATCHLINE 5800+00	5800+00	MATCHLINE 5800+00	5800+00
MATCHLINE 5800+00	5800+00	MATCHLINE 5800+00	5800+00

ENGINEERING DATA		MATERIAL	
21040-510-MVV-0020	21040-440-PMW-0004	12.750 SBRW 11.5 CC	12.750 SBRW 11.5 CC
21040-510-MVV-0020	21040-440-PMW-0004	12.750 SBRW 11.5 CC	12.750 SBRW 11.5 CC

ENVIRONMENTAL DATA		STATIONS	
5800+00	5800+00	5800+00	5800+00
5800+00	5800+00	5800+00	5800+00

BILL OF MATERIALS				MISCELLANEOUS MATERIALS				TYPICAL DRAWINGS				GENERAL INFORMATION								
ITEM NO.	QTY	UOM	DESCRIPTION	QTY	UOM	DESCRIPTION	DWG/FIELD BOOK NO.	TITLE	1.	THE MINIMUM DEPTH OF COVER FOR THE PROJECT IS 36 INCHES. ADDITIONAL DEPTH OF COVER IS REQUIRED FOR ROAD AND WATERBODY CROSSINGS, AND IS TO BE IN ACCORDANCE WITH REFERENCED PERMIT DRAWINGS, SITE SPECIFIC DRAWINGS, OR CONSTRUCTION SPECIFICATIONS, WHICHEVER IS MORE STRINGENT.	2.	THE BOUNDARIES OF ALL WORK AREAS WILL BE CLEARLY MARKED AND ALL WORK SHALL REMAIN WITHIN THE DESIGNATED WORK AREA.	3.	THE REQUIRED STATE ONE CALL NOTIFICATION IS THE RESPONSIBILITY OF THE CONSTRUCTION CONTRACTOR.	4.	THE CONTRACTOR SHALL ACCESS THE WORK AREA USING ONLY PUBLIC ROADS AND APPROVED ACCESS ROADS.	5.	ADDITIONAL WARNING SIGNS MAY BE REQUIRED AS DICTATED BY CONSTRUCTION CONTRACT.	6.	MAP PROJECTION: NAD 1983 HARN STATE PLANE FLORIDA EAST PART 0801 FEET, VERTICAL DATUM: NAD 83.

FITTINGS SUMMARY				CONTINUOUS CONCRETE COATING			
ITEM NO.	QTY	UOM	DESCRIPTION	ITEM NO.	QTY	UOM	DESCRIPTION

PIPE ASSEMBLIES			
QTY	UOM	DESCRIPTION	INTERNAL COATING (YES/NO): NO

LEGEND			
PIPELINE ROUTE	PERMITTED USE	ROADWAY WAREHOUSES	ADDITIONAL TEMPORARY ROADWAY
PIPELINE LINE	PERMITS	NON-FORAGED WETLAND	FORAGED WETLAND
PIPELINE LINE	PERMITS	WATERLINE	WATERBODY
PIPELINE LINE	PERMITS	SEWER LINE	PAVED ROADWAY
PIPELINE LINE	PERMITS	SEWER CABLE	UNPAVED ROADWAY
PIPELINE LINE	PERMITS	UTILITY LINE	ROADWAY BUFFER
PIPELINE LINE	PERMITS	GENERAL WAREHOUSE	ROADWAY BUFFER
PIPELINE LINE	PERMITS	ROADWAY BUFFER	ROADWAY BUFFER
PIPELINE LINE	PERMITS	ROADWAY BUFFER	ROADWAY BUFFER

REVISIONS			
NO.	DESCRIPTION	DATE	REV BY
1	IFC (UPDATE ENV. RE-ROUTES, FOOT-PRINT)	2016-04-08	MB MJ
2	ISSUED FOR CONSTRUCTION	2015-12-15	MB MJ

APPROVALS			
CONSTRUCTION	PERMIT NO.	MAINTENANCE OPERATION REGION	MIN. TEST PRESSURE 1816 PSI
DESIGN	DESIGN PRESSURE 1440 PSI	PROJECT DEF. NO.	