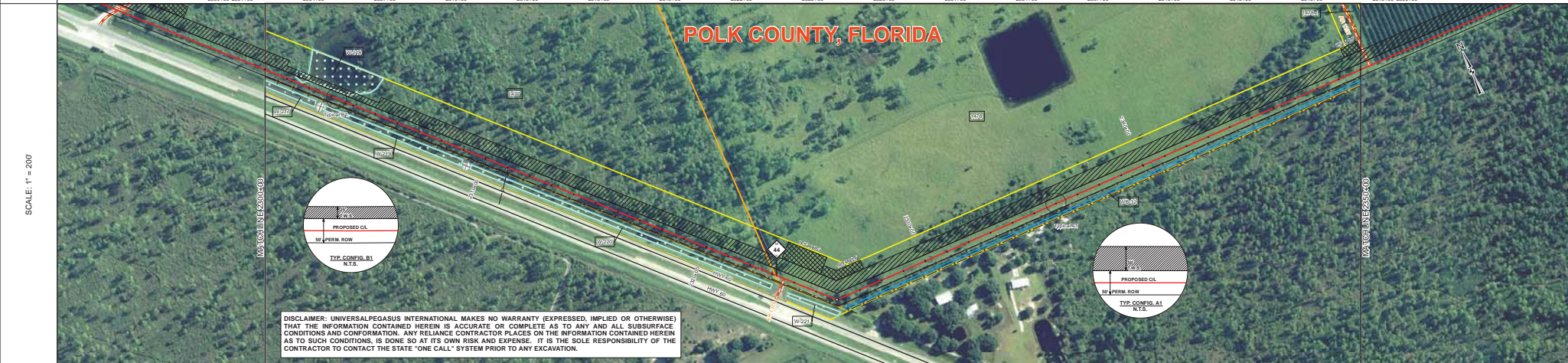
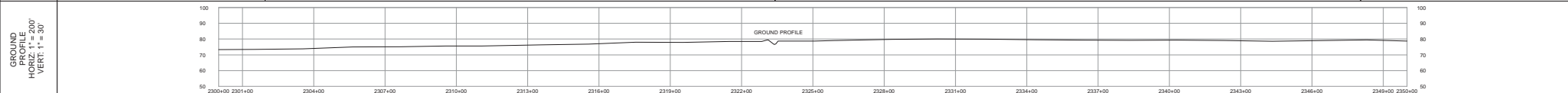


TRACT: BOARD OF TRUSTEES OF THE INTERNAL IMPROVEMENT TRUST FUND OF THE STATE OF FLORIDA 1477 2313 FT 2300+00 TO 2323+13

BOARD OF TRUSTEES OF THE INTERNAL IMPROVEMENT TRUST FUND OF THE STATE OF FLORIDA 1476 2317 FT 2323+13 TO 2350+00



| SURVEY DATA | | STATIONING | |
|-------------------|--|-------------------|--|
| MATCHLINE 2300+00 | | MATCHLINE 2350+00 | |
| MATCHLINE 2300+00 | | MATCHLINE 2350+00 | |

| BILL OF MATERIALS | | | |
|-------------------|------|-----|--|
| ITEM NO. | QTY | UOM | DESCRIPTION |
| 1 | 2300 | FT | 36" O.D. x 0.520" W.T. API 5L X70 F82 DRAM, 14-16 MILS FBE |
| 2 | 2640 | FT | 36" O.D. x 0.625" W.T. API 5L X70 F82 DRAM, 14-16 MILS FBE |

| MISCELLANEOUS MATERIALS | | | |
|-------------------------|-----|-----|------------------------|
| ITEM NO. | QTY | UOM | DESCRIPTION |
| 1 | EA | | SET ON WEIGHTS |
| 2 | EA | | PIPELINE MARKERS |
| 3 | EA | | WARNING SIGNS |
| 4 | EA | | CP TEST STATION TYPE 1 |
| 5 | EA | | CP TEST STATION TYPE 2 |
| 6 | EA | | AERIAL MARKERS |
| 7 | EA | | ANODE BED DEEP WELL |

| TYPICAL DRAWINGS | | | |
|--------------------|---|------|-------------|
| DWG FIELD BOOK NO. | TITLE | DATE | DESCRIPTION |
| 21040-510-TYP-2001 | CATHODIC PROTECTION STD. SINGLE POINT TEST STATION, TYPE 1 | | |
| 21040-510-TYP-2002 | CATHODIC PROTECTION STD. FOREIGN PIPELINE CROSSING TEST STATION, TYPE 2 | | |
| 21040-510-TYP-2012 | CONTINUOUS CONCRETE COATING STANDARD FOR 36"/30" PIPELINE | | |
| 21040-510-TYP-2014 | TYPICAL OPEN CUT / BORE | | |
| 21040-510-TYP-2015 | AERIAL MARKER INSTALLATION DETAIL | | |
| 21040-510-TYP-2016 | AERIAL MARKER DETAIL | | |
| 21040-510-TYP-2017 | TYPICAL PIPELINE MARKER ASSEMBLY | | |
| 21040-510-TYP-2018 | PIPELINE MARKER "WARNING" DECAL | | |

| GENERAL INFORMATION | | | |
|---------------------|---|--|--|
| 1. | THE MINIMUM DEPTH OF COVER FOR THE PROJECT IS 36 INCHES. ADDITIONAL DEPTH OF COVER IS REQUIRED FOR ROAD AND WATERBODY CROSSINGS, AND IS TO BE IN ACCORDANCE WITH REFERENCED PERMIT DRAWINGS, SITE SPECIFIC DRAWINGS, OR CONSTRUCTION SPECIFICATIONS, WHICHEVER IS MORE STRINGENT. | | |
| 2. | THE BOUNDARIES OF ALL WORK AREAS WILL BE CLEARLY MARKED AND ALL WORK SHALL REMAIN WITHIN THE DESIGNATED WORK AREA. | | |
| 3. | THE REQUIRED STATE ONE CALL NOTIFICATION IS THE RESPONSIBILITY OF THE CONSTRUCTION CONTRACTOR. | | |
| 4. | THE CONTRACTOR SHALL ACCESS THE WORK AREA USING ONLY PUBLIC ROADS AND APPROVED ACCESS ROADS. | | |
| 5. | ADDITIONAL WARNING SIGNS MAY BE REQUIRED AS DICTATED BY CONSTRUCTION CONTRACT. | | |
| 6. | MAP PROJECTION: NAD 1983 HARN STATE PLANE FLORIDA EAST FIPS 0801 FEET, VERTICAL DATUM: NAVD 83. | | |

LEGEND

- PIPELINE ROUTE
- FENCE
- POWER LINE
- TELEPHONE LINE
- WATERLINE
- SEWER LINE
- BURIED CABLE
- UTILITY LINE
- GENERAL PIPELINE
- FOREIGN PIPELINE
- ROAD
- RAILROAD
- ROAD ACCESS / ROAD CROSSING
- PLUG SECTION LINE
- ROW PARCEL
- PLUG SECTION LINE
- TRAIL
- WATER WELL
- NO DRAIN / EMB
- ANODE BED DEEP WELL
- PERMITTED WETLAND
- ADDITIONAL TEMPORARY PROTECTION
- NON-FORMER WETLAND
- FORESTED WETLAND
- WATERBODY
- PAVED SURFACE
- UNPAVED SURFACE
- ROADWAY
- ROADWAY BUFFER (20 FEET)
- TYPICAL JETTED CONSTRUCTION POINT OF INTERSECTION (POI)
- VERTICAL FITTING
- SPREAD BEAK
- ENVIRONMENTAL SENSITIVE AREA

| REVISIONS | | | |
|-----------|--|------------|---------|
| NO. | DESCRIPTION | DATE | REV BY |
| 1 | IFC (UPDATE ENV. RE ROUTES, FOOTPRINT) | 2016-04-08 | MB / MJ |
| 0 | ISSUED FOR CONSTRUCTION | 2015-12-15 | MB / MJ |

APPROVALS

UNIVERSALPEGASUS INTERNATIONAL
A Subsidiary of ManpowerGroup Inc.

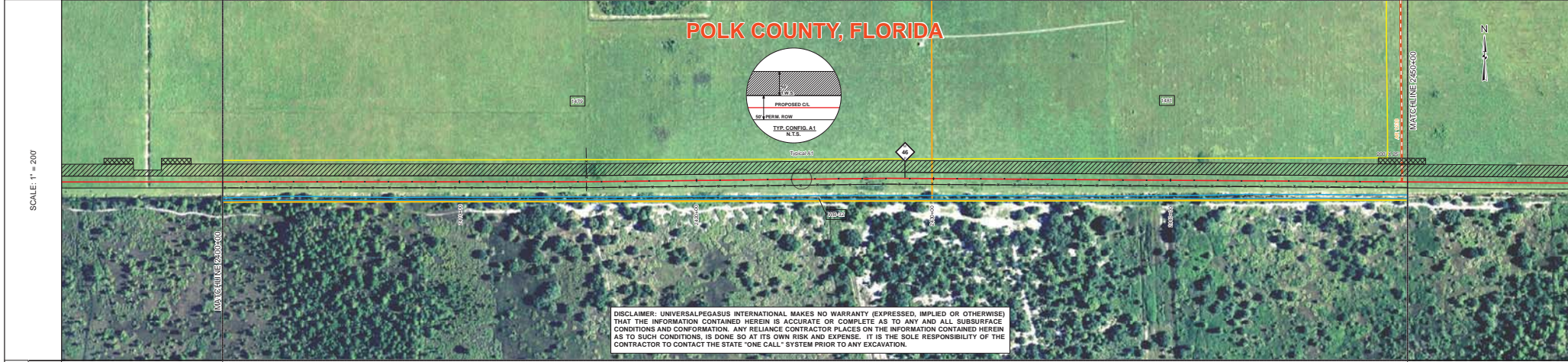
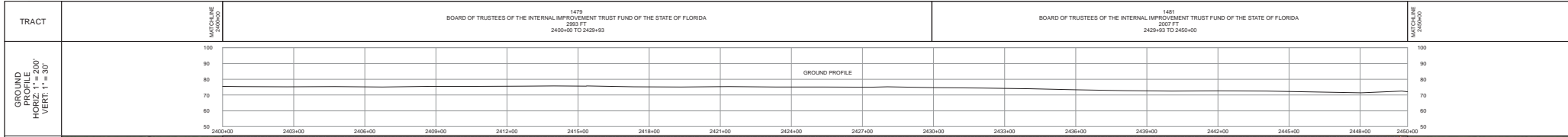
FLORIDA SOUTHEAST CONNECTION PROJECT
21040-510-ALS-00051

FLORIDA SOUTHEAST CONNECTION ALIGNMENT SHEET 1
POLK COUNTY, FLORIDA

SCALE: 1" = 200'

21040-510-ALS-00051

REV. 1



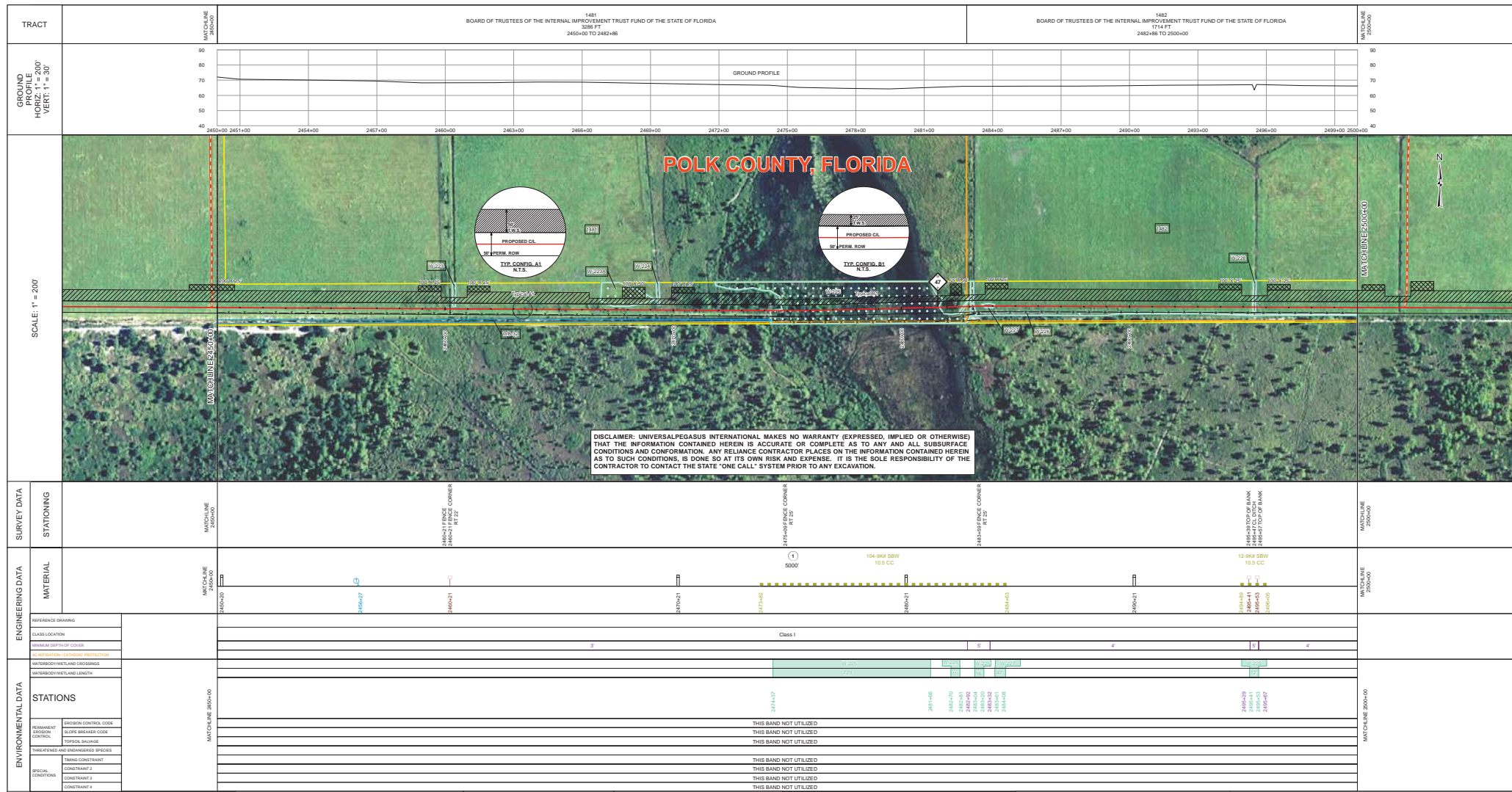
DISCLAIMER: UNIVERSALPEGASUS INTERNATIONAL MAKES NO WARRANTY (EXPRESSED, IMPLIED OR OTHERWISE) THAT THE INFORMATION CONTAINED HEREIN IS ACCURATE OR COMPLETE AS TO ANY AND ALL SUBSURFACE CONDITIONS AND CONFIRMATION. ANY RELIANCE CONTRACTOR PLACES ON THE INFORMATION CONTAINED HEREIN AS TO SUCH CONDITIONS, IS DONE SO AT ITS OWN RISK AND EXPENSE. IT IS THE SOLE RESPONSIBILITY OF THE CONTRACTOR TO CONTACT THE STATE "ONE CALL" SYSTEM PRIOR TO ANY EXCAVATION.

| | | | |
|--------------------|---------------------------|-------------------|-------------------|
| SURVEY DATA | STATIONING | MATCHLINE 2400+00 | MATCHLINE 2450+00 |
| | MATERIAL | MATCHLINE 2400+00 | MATCHLINE 2450+00 |
| ENGINEERING DATA | REFERENCE DRAWING | MATCHLINE 2400+00 | MATCHLINE 2450+00 |
| | CLASS LOCATION | MATCHLINE 2400+00 | MATCHLINE 2450+00 |
| ENVIRONMENTAL DATA | STATIONS | MATCHLINE 2400+00 | MATCHLINE 2450+00 |
| | PERMANENT EROSION CONTROL | MATCHLINE 2400+00 | MATCHLINE 2450+00 |

| BILL OF MATERIALS | | MISCELLANEOUS MATERIALS | | TYPICAL DRAWINGS | | GENERAL INFORMATION | |
|-------------------|------|-----------------------------|-------------|-------------------------------|---|--|--|
| ITEM NO. | QTY | UOM | RECN NUMBER | MATERIAL NUMBER | DESCRIPTION | DWG/FIELD BOOK NO. | TITLE |
| 1 | 5000 | FT | | | 36" O.D. x 0.5200 WT., API 5L X70, PSL2, DSAW, 14-16 MILS FBE | | 1. THE MINIMUM DEPTH OF COVER FOR THE PROJECT IS 36 INCHES. ADDITIONAL DEPTH OF COVER IS REQUIRED FOR ROAD AND WATERBODY CROSSINGS, AND IS TO BE IN ACCORDANCE WITH REFERENCED PERMIT DRAWINGS, SITE SPECIFIC DRAWINGS, OR CONSTRUCTION SPECIFICATIONS, WHICHEVER IS MORE STRINGENT. |
| FITTINGS SUMMARY | | CONTINUOUS CONCRETE COATING | | PIPE COATING DATA | | SPECIAL NOTES | |
| ITEM NO. | QTY | UOM | RECN NUMBER | MATERIAL NUMBER | DESCRIPTION | | |
| PIPE ASSEMBLIES | | PIPE COATING DATA | | INTERNAL COATING (YES/NO): NO | | 1. INDUCTION BEND QUANTITIES ALONG WITH THEIR DESCRIPTIONS ARE LOCATED ON DRAWING 21040-SS-FW-00001. | |

| REVISIONS | | | |
|-----------|--|------------|--------|
| NO. | DESCRIPTION | DATE | REV BY |
| 1 | IFC (UPDATE ENV. RE ROUTES, FOOTPRINT) | 2016-04-08 | MB |
| 0 | ISSUED FOR CONSTRUCTION | 2015-12-15 | MB |

| | | | |
|--|---------------------|---------|----------------|
| APPROVALS | | | |
| NO. | DESCRIPTION | DATE | REV BY |
| APPROVAL | | COMPANY | |
| | | | |
| FLORIDA SOUTHEAST CONNECTION PROJECT STN. 2400+00 TO 2450+00 ALIGNMENT SHEET POLK COUNTY, FLORIDA | | | |
| SCALE: 1" = 200' | 21040-510-ALS-00053 | REV. 1 | DISCIPLINE: 03 |



| BILL OF MATERIALS | | | | MISCELLANEOUS MATERIALS | | | | TYPICAL DRAWINGS | | | | GENERAL INFORMATION | | | |
|-------------------|------|-----|--|-------------------------|-----|-----|-------------|--------------------|---|---|--|--|--|--|--|
| ITEM NO. | QTY | UOM | DESCRIPTION | ITEM NO. | QTY | UOM | DESCRIPTION | DWG/FIELD BOOK NO. | TITLE | 1. | 2. | 3. | 4. | | |
| 1 | 5000 | FT | 36" O.D. x 0.5300 W.T. API 5L X70 PSL2 BSW, 14-16 MILS FBE | | | | | 21040-510-TYP-2001 | CATHODIC PROTECTION STD. SINGLE POINT TEST STATION, TYPE 1 | THE MINIMUM DEPTH OF COVER FOR THE PROJECT IS 36 INCHES. ADDITIONAL DEPTH OF COVER IS REQUIRED FOR ROAD AND WATERBODY CROSSINGS, AND IS TO BE IN ACCORDANCE WITH REFERENCED PERM DRAWINGS, SITE SPECIFIC DRAWINGS, OR CONSTRUCTION SPECIFICATIONS, WHICHEVER IS MORE STRINGENT. | THE BOUNDARIES OF ALL WORK AREAS WILL BE CLEARLY MARKED AND ALL WORK SHALL REMAIN WITHIN THE DESIGNATED WORK AREA. | THE REQUIRED STATE ONE CALL NOTIFICATION IS THE RESPONSIBILITY OF THE CONSTRUCTION CONTRACTOR. | THE CONTRACTOR SHALL ACCESS THE WORK AREA USING ONLY PUBLIC ROADS AND APPROVED ACCESS ROADS. | | |
| | | | | | | | | 21040-510-TYP-2002 | CATHODIC PROTECTION STD. FOREIGN PIPELINE CROSSING TEST STATION, TYPE 2 | | | | 5. ADDITIONAL WARNING SIGNS MAY BE REQUIRED AS DICTATED BY CONSTRUCTION CONTRACT. | | |
| | | | | | | | | 21040-510-TYP-2003 | CP TEST STATION TYPE 2 | | | | 6. MAP PROJECTION: NAD 1983 HARN STATE PLANE FLORIDA EAST FIPS 0801 FEET, VERTICAL DATUM: NAVD 83. | | |
| | | | | | | | | 21040-510-TYP-2012 | CONTINUOUS CONCRETE COATING STANDARD FOR 36"/30" PIPELINE | SPECIAL NOTES 1. INDUCTION BEND QUANTITIES ALONG WITH THEIR DESCRIPTIONS ARE LOCATED ON DRAWING 21040-SSE-FW-00001. 2. A - SEE AERK DRAWING PACKAGE FOR ANODE BED DEEP WELL. | | | | | |
| | | | | | | | | 21040-510-TYP-2013 | CP TEST STATION TYPE 1 | | | | | | |
| | | | | | | | | 21040-510-TYP-2014 | WARNING SIGN DETAIL | | | | | | |
| | | | | | | | | 21040-510-TYP-2015 | AERIAL MARKER INSTALLATION DETAIL | | | | | | |
| | | | | | | | | 21040-510-TYP-2016 | AERIAL MARKER DETAIL | | | | | | |
| | | | | | | | | 21040-510-TYP-2017 | TYPICAL PIPELINE MARKER ASSEMBLY | | | | | | |
| | | | | | | | | 21040-510-TYP-2018 | PIPELINE MARKER "WARNING" DECAL | | | | | | |

| FITTINGS SUMMARY | | | | CONTINUOUS CONCRETE COATING | | | | PIPE COATING DATA | | | |
|------------------|-----|-----|-------------|-----------------------------|-----|-----|-------------|-------------------|-----|-----|-------------|
| ITEM NO. | QTY | UOM | DESCRIPTION | ITEM NO. | QTY | UOM | DESCRIPTION | ITEM NO. | QTY | UOM | DESCRIPTION |
| | | | | | | | | | | | |
| | | | | | | | | | | | |
| | | | | | | | | | | | |

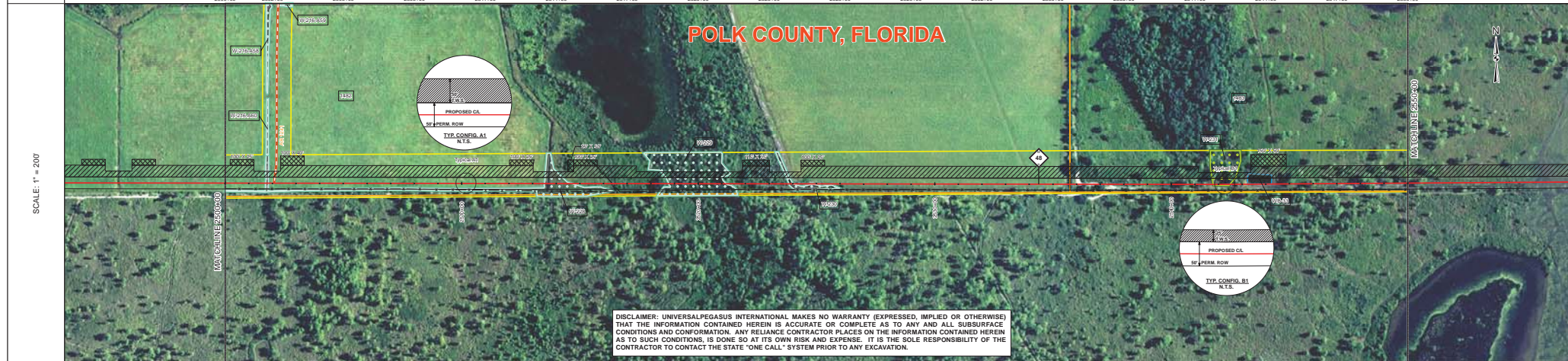
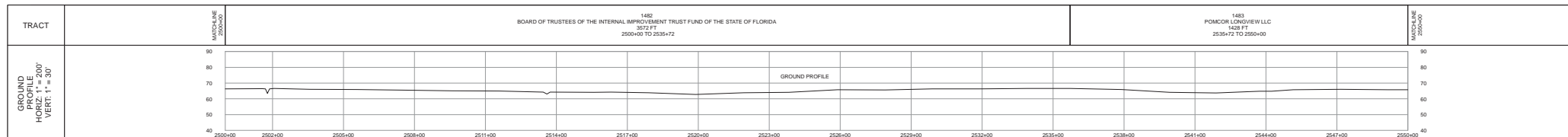
| LEGEND | | | |
|--------|---------------------------------|--|----------------------------|
| | PIPELINE ROUTE | | FENCING |
| | POWER LINE | | WATER LINE |
| | SEWER LINE | | GAS LINE |
| | TELEPHONE LINE | | CABLE |
| | INDUCTION BEND | | VALVE |
| | MANHOLE | | WELL |
| | AERIAL MARKER | | AERIAL MARKER DETAIL |
| | CP TEST STATION | | CP TEST STATION TYPE 1 |
| | CP TEST STATION TYPE 2 | | WARNING SIGN |
| | PIPELINE MARKER | | PIPELINE MARKER ASSEMBLY |
| | PIPELINE MARKER "WARNING" DECAL | | PIPELINE MARKER DETAIL |
| | ANODE BED DEEP WELL | | ANODE BED DEEP WELL DETAIL |

| REVISIONS | | | | APPROVALS | | | |
|-----------|--|------------|--------|-----------|--------|------------------|------------------------------|
| NO. | DESCRIPTION | DATE | REV BY | CHK BY | APP BY | CONSTRUCTION | PERMIT NO. |
| 1 | IFC (UPDATE ENV. RE ROUTES, FOOTPRINT) | 2016-04-08 | MB | MJ | RG | PROJECT MANAGER | MAINTENANCE OPERATION REGION |
| 0 | ISSUED FOR CONSTRUCTION | 2015-12-15 | MB | MJ | RG | PROJECT DEF. NO. | MIN. TEST PRESSURE 1816 PSI |
| | | | | | | | DESIGN PRESSURE 1440 PSI |

FLORIDA SOUTHEAST CONNECTION PROJECT
 21040-SSE-FW-00001
 DISCIPLINE: 03

FLORIDA SOUTHEAST CONNECTION
 ALIGNMENT SHEET 1
 POLK COUNTY, FLORIDA

SCALE: 1" = 200' 21040-510-ALS-00054 REV. 1



| SURVEY DATA | | STATIONING | |
|-----------------------------------|---|--|------------------------|
| TRACT | BOARD OF TRUSTEES OF THE INTERNAL IMPROVEMENT TRUST FUND OF THE STATE OF FLORIDA 3573 FT 2500+00 TO 2535+72 | 1483 POMCOR LONGVIEW LLC 1428 FT 2535+72 TO 2550+00 | |
| ENGINEERING DATA | | MATERIAL | |
| REFERENCE DRAWING | | 12-9042 SBW 10.5 CC | 22-9042 SBW 10.5 CC |
| CLASS LOCATION | | 34-9042 SBW 10.5 CC | 13-9042 SBW 10.5 CC |
| MINIMUM DEPTH OF COVER | 4 | 16-9042 SBW 10.5 CC | 8-9042 SBW 8 CC |
| INTERSECTION CATHODIC PROTECTION | 0 | | |
| ENVIRONMENTAL DATA | | STATIONS | |
| PERMANENT EROSION CONTROL | | 2513+49 | 2514+18 |
| SOIL SALVAGE | | 2513+70 | 2514+18 |
| THREATENED AND ENDANGERED SPECIES | | 2514+18 | 2514+18 |
| THIRD CONSTRAINT | | | |
| CONSTRAINT 1 | | | |
| CONSTRAINT 2 | | | |
| CONSTRAINT 3 | | | |

| BILL OF MATERIALS | | | | MISCELLANEOUS MATERIALS | | | | TYPICAL DRAWINGS | | | | GENERAL INFORMATION | | | |
|-------------------|------|-----|---|-------------------------|-----|--------------|------------------------|--------------------|---|--|--|---------------------|--|--|--|
| ITEM NO. | QTY | UOM | DESCRIPTION | QTY | UOM | REIN. NUMBER | DESCRIPTION | DWG/FIELD BOOK NO. | TITLE | 1. THE MINIMUM DEPTH OF COVER FOR THE PROJECT IS 36 INCHES. ADDITIONAL DEPTH OF COVER IS REQUIRED FOR ROAD AND WATERBODY CROSSINGS, AND IS TO BE IN ACCORDANCE WITH REFERENCED PERMIT DRAWINGS, SITE SPECIFIC DRAWINGS, OR CONSTRUCTION SPECIFICATIONS, WHICHEVER IS MORE STRINGENT. | | | | | |
| 1 | 5000 | FT | 36" O.D. x 0.5200 WT. API 5L X70 PSL2 DSWW, 14-16 MLS FBE | 107 | EA | | SET ON WEIGHTS | 21040-510-TYP-2001 | CATHODIC PROTECTION STD. SINGLE POINT TEST STATION, TYPE 1 | 2. THE BOUNDARIES OF ALL WORK AREAS WILL BE CLEARLY MARKED AND ALL WORK SHALL REMAIN WITHIN THE DESIGNATED WORK AREA. | | | | | |
| | | | | 5 | EA | | PIPELINE MARKERS | | | 3. THE REQUIRED STATE ONE CALL NOTIFICATION IS THE RESPONSIBILITY OF THE CONSTRUCTION CONTRACTOR. | | | | | |
| | | | | 1 | EA | | WARNING SIGNS | | | 4. THE CONTRACTOR SHALL ACCESS THE WORK AREA USING ONLY PUBLIC ROADS AND APPROVED ACCESS ROADS. | | | | | |
| | | | | 1 | EA | | CP TEST STATION TYPE 1 | 21040-510-TYP-2002 | CATHODIC PROTECTION STD. FOREIGN PIPELINE CROSSING TEST STATION, TYPE 2 | 5. ADDITIONAL WARNING SIGNS MAY BE REQUIRED AS DETERMINED BY THE CONTRACT. | | | | | |
| | | | | 1 | EA | | CP TEST STATION TYPE 2 | 21040-510-TYP-2003 | | 6. MAP PROJECTION: NAD 1983 HARN STATE PLANE FLORIDA EAST 75' 0001 FEET, VERTICAL DATUM: NAVD 83. | | | | | |
| | | | | 0 | EA | | AERIAL MARKERS | | | | | | | | |
| | | | | 0 | EA | | ANODE BED DEEP WELL | | | | | | | | |

| FITTINGS SUMMARY | | | | CONTINUOUS CONCRETE COATING | | | | PIPE COATING DATA | | | | | |
|------------------|-----|-----|-------------|-----------------------------|-----|--------------|-------------|---|-------------------------------|-------------------------------|--|--|--|
| ITEM NO. | QTY | UOM | DESCRIPTION | QTY | UOM | REIN. NUMBER | DESCRIPTION | PIPE COATING: 14 MIL MINIMUM FBE AND 24 MIL MINIMUM ARO | SURFACE COATING: 2 PART EPOXY | INTERNAL COATING (YES/NO): NO | | | |
| | | | | | | | | | | | | | |

| LEGEND | | | |
|--------|-----------------|--|---------------------|
| | PIPELINE ROUTE | | FENCE |
| | POWER LINE | | TELEPHONE LINE |
| | ROAD | | WATER LINE |
| | SEWER LINE | | GAS LINE |
| | FIRE LINE | | CABLE |
| | UTILITY LINE | | SURVEY LINE |
| | MATERIAL FILL | | ROADWAY |
| | AERIAL MARKER | | PIPELINE ACCESS |
| | CP TEST STATION | | PIPELINE MARKER |
| | PIPELINE BENDER | | ANODE BED DEEP WELL |

| REVISIONS | | | | APPROVALS | | | |
|-----------|--|------------|---------|-----------|---------|-----|------------------------------|
| NO. | DESCRIPTION | DATE | REV. BY | CHK. BY | APP. BY | NO. | DESCRIPTION |
| 1 | IFC (UPDATE ENV. RE ROUTES, FOOTPRINT) | 2016-04-08 | MB | MJ | RG | 1 | CONSTRUCTION PERMIT NO. |
| 0 | ISSUED FOR CONSTRUCTION | 2015-12-15 | MB | MJ | RG | 2 | MAINTENANCE OPERATION REGION |

APPROVAL **COMPANY**

FLORIDA SOUTHEAST CONNECTION PROJECT
 STA. 2500+00 TO 2550+00
FLORIDA SOUTHEAST CONNECTION
 ALIGNMENT SHEET
 POLK COUNTY, FLORIDA

SCALE: 1" = 200' 21040-510-ALS-00055 REV. 1