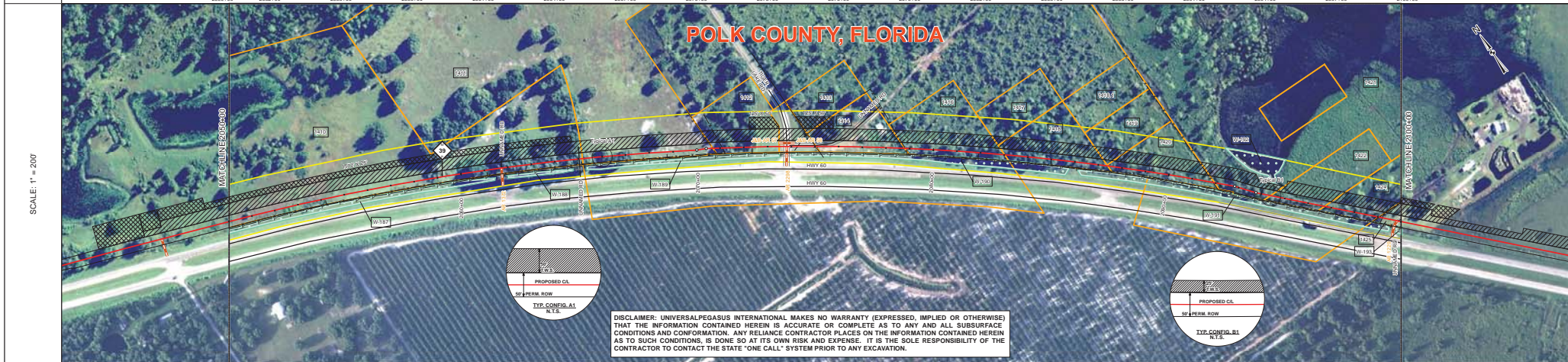
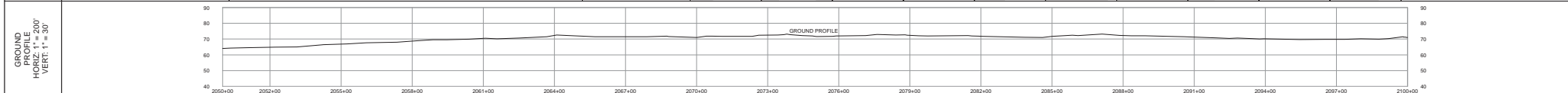


TRACT	1410 BRUCE NEWELL TRUST AND MARILYN S. NEWELL TRUST 1516 FT 2050+00 TO 2065+16	1411 BRUCE NEWELL TRUST AND MARILYN S. NEWELL TRUST 563 FT 2065+16 TO 2070+69	1412 JOSEFINA C. DE CONCEPCION 280 FT 2070+69 TO 2073+49	1413 TIGER LAKE RD POLK COUNTY 195 FT 2073+49 TO 2075+04	1414 LAINE LIGHTSEY 375 FT 2075+04 TO 2078+79	1416 ALFRED J. LANGRISH AND DIANE M. BARRY 433 FT 2078+79 TO 2083+02	1418 BLUE BAY PROPERTIES II, LLC 437 FT 2083+02 TO 2087+39	1420 CURTIS ROYAL AND CURSON NEWKIRK 456 FT 2087+39 TO 2091+95	1421 LIGHTSEY RANCHES, LTD. 243 FT 2091+95 TO 2094+38	1422 LIGHTSEY RANCHES, LTD. 233 FT 2094+38 TO 2096+71	1424 POLK LOTS LLC 253 FT 2096+71 TO 2099+04	1425 JACOB CHARLES MORGAN AND LAURA M. MORGAN 96 FT 2099+04 TO 2100+00
-------	---	--	---	--	--	---	---	---	--	--	---	---



DISCLAIMER: UNIVERSALPEGASUS INTERNATIONAL MAKES NO WARRANTY (EXPRESSED, IMPLIED OR OTHERWISE) THAT THE INFORMATION CONTAINED HEREIN IS ACCURATE OR COMPLETE AS TO ANY AND ALL SUBSURFACE CONDITIONS AND CONFORMATION. ANY RELIANCE CONTRACTOR PLACES ON THE INFORMATION CONTAINED HEREIN AS TO SUCH CONDITIONS, IS DONE SO AT ITS OWN RISK AND EXPENSE. IT IS THE SOLE RESPONSIBILITY OF THE CONTRACTOR TO CONTACT THE STATE "ONE CALL" SYSTEM PRIOR TO ANY EXCAVATION.

SURVEY DATA	STATIONING		MATCHLINE 2000+00	MATCHLINE 2100+00
	2050+00	2100+00		
ENGINEERING DATA	MATERIAL		MATCHLINE 2000+00	MATCHLINE 2100+00
	207	2132		
ENVIRONMENTAL DATA	STATIONS		MATCHLINE 2000+00	MATCHLINE 2100+00
	Class I	2053+07		

BILL OF MATERIALS				MISCELLANEOUS MATERIALS				TYPICAL DRAWINGS				GENERAL INFORMATION			
ITEM NO.	QTY	UOM	DESCRIPTION	QTY	UOM	DESCRIPTION	DWG/FIELD BOOK NO.	TITLE	1.	2.	3.	4.	5.	6.	
1	1515	FT	36" O.D. x 0.520 W.T. - API 5L X70 PSL2 DRAM, 14-16 MLS FBE	0	EA	SET ON WEIGHTS	21040-510-TYP-20001	CATHODIC PROTECTION STD. SINGLE POINT TEST STATION, TYPE 1	1. THE MINIMUM DEPTH OF COVER FOR THE PROJECT IS 36 INCHES. ADDITIONAL DEPTH OF COVER IS REQUIRED FOR ROAD AND WATERBODY CROSSINGS, AND IS TO BE IN ACCORDANCE WITH REFERENCED PERMIT DRAWINGS, SITE SPECIFIC DRAWINGS, OR CONSTRUCTION SPECIFICATIONS, WHICHEVER IS MORE STRINGENT.	2. THE BOUNDARIES OF ALL WORK AREAS WILL BE CLEARLY MARKED AND ALL WORK SHALL REMAIN WITHIN THE DESIGNATED WORK AREA.	3. THE REQUIRED STATE ONE CALL NOTIFICATION IS THE RESPONSIBILITY OF THE CONSTRUCTION CONTRACTOR.	4. THE CONTRACTOR SHALL ACCESS THE WORK AREA USING ONLY PUBLIC ROADS AND APPROVED ACCESS ROADS.	5. ADDITIONAL WARNING SIGNS MAY BE REQUIRED AS DICTATED BY CONSTRUCTION CONTRACT.	6. MAP PROJECTION: NAD 1983 HAIN STATE PLANE FLORIDA EAST FIPS 0801 FEET. VERTICAL DATUM: NAD 83.	

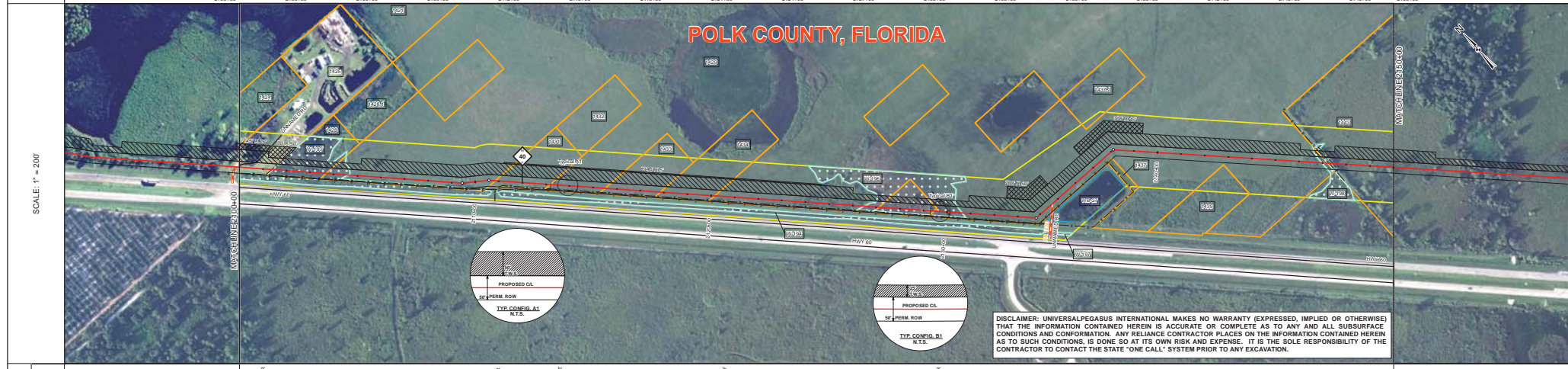
FITTINGS SUMMARY				CONTINUOUS CONCRETE COATING				PIPE COATING DATA			
ITEM NO.	QTY	UOM	DESCRIPTION	QTY	UOM	DESCRIPTION	PIPE COATING: 14 MIL MINIMUM FBE AND 24 MIL MINIMUM ARO	SOFT WELD COATING: 2 PART EPOXY	INTERNAL COATING (YES/NO): NO		
1	1515	FT	36" O.D. x 0.520 W.T. - API 5L X70 PSL2 DRAM, 14-16 MLS FBE	0	EA	SET ON WEIGHTS	21040-510-TYP-20001	21040-510-TYP-20001	21040-510-TYP-20001		

LEGEND		REVISIONS		APPROVALS	
SYMBOL	DESCRIPTION	NO.	DESCRIPTION	DATE	BY
SYMBOL	DESCRIPTION	1	IFC (UPDATE ENV. RE-ROUTES, FOOT-PRINT)	2016-04-08	MJ
SYMBOL	DESCRIPTION	2	ISSUED FOR CONSTRUCTION	2015-12-15	MJ

UNIVERSALPEGASUS INTERNATIONAL	FLORIDA SOUTHEAST CONNECTION
PROJECT MANAGER	DESIGN PRESSURE 1440 PSI
CHECKED BY	DESIGN PRESSURE 1816 PSI
DRAWN BY	DESIGN PRESSURE 1816 PSI

FLORIDA SOUTHEAST CONNECTION PROJECT
 STA. 2050+00 TO 2100+00
 DISCIPLINE: 03
 FLORIDA SOUTHEAST CONNECTION
 ALIGNMENT SHEET
 POLK COUNTY, FLORIDA
 SCALE: 1" = 200'
 21040-510-ALS-00046
 REV. 1
 SHEET 46

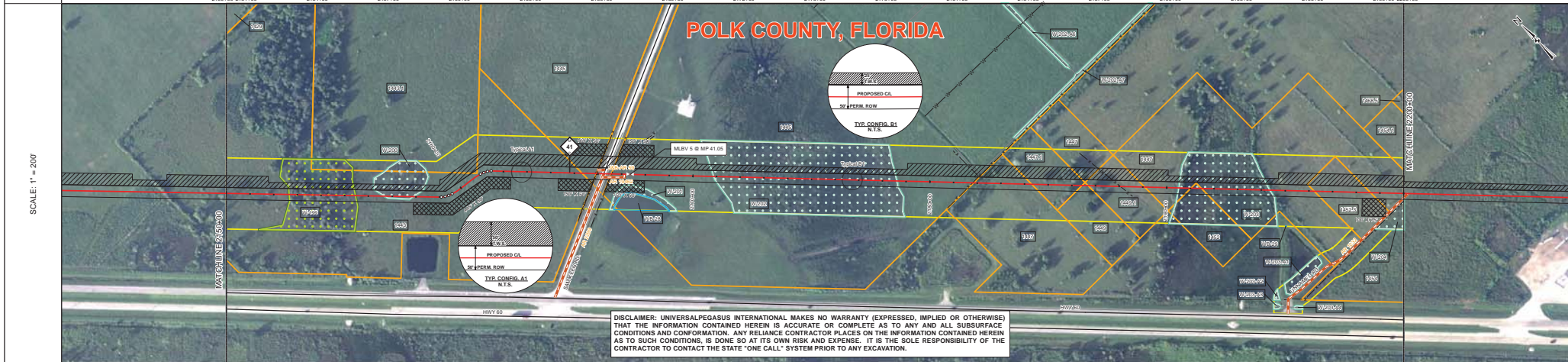
TRACT	1425	1426	1429	1431	1432	1433	1434	1429	POLK COUNTY ROW	1429	1443
	JACOB CHARLES MORGAN AND LAURA M. MORGAN 185 FT 2100+00 TO 2101+35	WILLIAM CHMO & MARY G. MORGAN 232 FT 2101+35 TO 2102+67	LIGHTSEY RANCHES, LTD. 718 FT 2103+67 TO 2110+85	EDITH M. MCPHAIL 234 FT 2110+85 TO 2113+18	LIGHTSEY RANCHES, LTD. 233 FT 2113+18 TO 2115+51	EDITH M. MCPHAIL 244 FT 2115+51 TO 2117+85	CEAL LAY AND CHARLOTTE E. LAY 231 FT 2117+85 TO 2120+16	LIGHTSEY RANCHES, LTD. 598 FT 2120+16 TO 2127+12	232 FT 2127+12 TO 2129+44	LIGHTSEY RANCHES, LTD. 1728 FT 2129+44 TO 2147+20	LIGHTSEY RANCHES, LTD. CLAYTON D. LIGHTSEY 280 FT 2147+20 TO 2150+00



SURVEY DATA	STATIONING		MATERIAL	REFERENCE DRAWING	CLASS LOCATION	MINIMUM DEPTH OF COVER	CATHODIC PROTECTION	WATERBODIES/ETWLAND CROSSINGS	WATERBODIES/ETWLAND LENGTH	ENVIRONMENTAL DATA	STATIONS
	START	END									
	2100+00	2150+00	2100+00-2101+35: 4" x 1/2" SDR 35 STEEL PIPE 2101+35-2102+67: 4" x 1/2" SDR 35 STEEL PIPE 2102+67-2103+67: 4" x 1/2" SDR 35 STEEL PIPE 2103+67-2110+85: 4" x 1/2" SDR 35 STEEL PIPE 2110+85-2113+18: 4" x 1/2" SDR 35 STEEL PIPE 2113+18-2115+51: 4" x 1/2" SDR 35 STEEL PIPE 2115+51-2117+85: 4" x 1/2" SDR 35 STEEL PIPE 2117+85-2120+16: 4" x 1/2" SDR 35 STEEL PIPE 2120+16-2127+12: 4" x 1/2" SDR 35 STEEL PIPE 2127+12-2129+44: 4" x 1/2" SDR 35 STEEL PIPE 2129+44-2147+20: 4" x 1/2" SDR 35 STEEL PIPE 2147+20-2150+00: 4" x 1/2" SDR 35 STEEL PIPE								

BILL OF MATERIALS				MISCELLANEOUS MATERIALS				TYPICAL DRAWINGS				GENERAL INFORMATION				LEGEND				REVISIONS				APPROVALS			
ITEM NO.	QTY	UOM	DESCRIPTION	ITEM NO.	QTY	UOM	DESCRIPTION	ITEM NO.	QTY	UOM	DESCRIPTION	ITEM NO.	QTY	UOM	DESCRIPTION	NO.	DESCRIPTION	DATE	REV BY	APP BY	NO.	DESCRIPTION	DATE	REV BY	APP BY		
1	5000	FT	36" O.D. x 0.530" W.T., API 5L X70, PSL2, DSAM, 14-16 MILS FBE	10A	EA		SET ON WEIGHTS	21040-510-TYP-2001			CATHODIC PROTECTION STD. SINGLE POINT TEST STATION, TYPE 1	1			MINIMUM DEPTH OF COVER FOR THE PROJECT IS 36 INCHES. ADDITIONAL DEPTH OF COVER IS REQUIRED FOR ROAD AND WATERBODY CROSSINGS, AND IS TO BE IN ACCORDANCE WITH REFERENCED PERMIT DRAWINGS, SITE SPECIFIC DRAWINGS, OR CONSTRUCTION SPECIFICATIONS, WHICHEVER IS MORE STRINGENT.	1	UPDATE ENV. RE-ROUTES, FOOT-PRINT	2016-04-08	MB	MJ	RG	1	PROJECT MANAGER	RG	MIN. TEST PRESSURE	1816	PSI
				10B	EA		PIPELINE MARKERS	21040-510-TYP-2002			CATHODIC PROTECTION STD. FOREIGN PIPELINE CROSSING TEST STATION, TYPE 2	2			THE BOUNDARIES OF ALL WORK AREAS WILL BE CLEARLY MARKED AND ALL WORK SHALL REMAIN WITHIN THE DESIGNATED WORK AREA.	0	ISSUED FOR CONSTRUCTION	2015-12-15	MB	MJ	RG	0	PROJECT DEF. NO.		DESIGN PRESSURE	1440	PSI
				10C	EA		WARNING SIGNS	21040-510-TYP-2003			CATHODIC PROTECTION STD. TYPICAL OPEN CUT / BORE	3			THE REQUIRED STATE ONE CALL NOTIFICATION IS THE RESPONSIBILITY OF THE CONSTRUCTION CONTRACTOR.	<table border="1"> <thead> <tr> <th>ENVIRONMENTAL</th> <th>LAND</th> </tr> </thead> <tbody> <tr> <td></td> <td></td> </tr> </tbody> </table>				ENVIRONMENTAL	LAND						
ENVIRONMENTAL	LAND																										
				10D	EA		CP TEST STATION TYPE 1	21040-510-TYP-2012			CONTINUOUS CONCRETE COATING STANDARD FOR 36" / 30" PIPELINE	4			THE CONTRACTOR SHALL ACCESS THE WORK AREA USING ONLY PUBLIC ROADS AND APPROVED ACCESS ROADS.	<table border="1"> <thead> <tr> <th colspan="2">APPROVALS</th> </tr> <tr> <th>DESIGNED BY</th> <th>CHECKED BY</th> </tr> </thead> <tbody> <tr> <td></td> <td></td> </tr> </tbody> </table>				APPROVALS		DESIGNED BY	CHECKED BY				
APPROVALS																											
DESIGNED BY	CHECKED BY																										
				10E	EA		AERIAL MARKERS	21040-510-TYP-2013			CONTINUOUS CONCRETE COATING STANDARD FOR 36" / 30" PIPELINE	5			ADDITIONAL WARNING SIGNS MAY BE REQUIRED AS DICTATED BY CONSTRUCTION CONTRACT.	<table border="1"> <thead> <tr> <th colspan="2">APPROVALS</th> </tr> <tr> <th>DESIGNED BY</th> <th>CHECKED BY</th> </tr> </thead> <tbody> <tr> <td></td> <td></td> </tr> </tbody> </table>				APPROVALS		DESIGNED BY	CHECKED BY				
APPROVALS																											
DESIGNED BY	CHECKED BY																										
				10F	EA		ANODE BED DEEP WELL	21040-510-TYP-2014			CONTINUOUS CONCRETE COATING STANDARD FOR 36" / 30" PIPELINE	6			MAP PROJECTION: NAD 1983 HAIN STATE PLANE FLORIDA EAST FIPS 8061 FEET, VECTOR DATUM: NAD83.	<table border="1"> <thead> <tr> <th colspan="2">APPROVALS</th> </tr> <tr> <th>DESIGNED BY</th> <th>CHECKED BY</th> </tr> </thead> <tbody> <tr> <td></td> <td></td> </tr> </tbody> </table>				APPROVALS		DESIGNED BY	CHECKED BY				
APPROVALS																											
DESIGNED BY	CHECKED BY																										
				10G	EA		ANODE BED DEEP WELL	21040-510-TYP-2015			CONTINUOUS CONCRETE COATING STANDARD FOR 36" / 30" PIPELINE	7			SPECIAL NOTES	<table border="1"> <thead> <tr> <th colspan="2">APPROVALS</th> </tr> <tr> <th>DESIGNED BY</th> <th>CHECKED BY</th> </tr> </thead> <tbody> <tr> <td></td> <td></td> </tr> </tbody> </table>				APPROVALS		DESIGNED BY	CHECKED BY				
APPROVALS																											
DESIGNED BY	CHECKED BY																										
				10H	EA		ANODE BED DEEP WELL	21040-510-TYP-2016			CONTINUOUS CONCRETE COATING STANDARD FOR 36" / 30" PIPELINE	8			INDUCTION BEND QUANTITIES ALONG WITH THEIR DESCRIPTIONS ARE LOCATED ON DRAWING 21040-SSE-FW-00001.	<table border="1"> <thead> <tr> <th colspan="2">APPROVALS</th> </tr> <tr> <th>DESIGNED BY</th> <th>CHECKED BY</th> </tr> </thead> <tbody> <tr> <td></td> <td></td> </tr> </tbody> </table>				APPROVALS		DESIGNED BY	CHECKED BY				
APPROVALS																											
DESIGNED BY	CHECKED BY																										
				10I	EA		ANODE BED DEEP WELL	21040-510-TYP-2017			CONTINUOUS CONCRETE COATING STANDARD FOR 36" / 30" PIPELINE	9			SEE A/RK DRAWING PACKAGE FOR ANODE BED DEEP WELL.	<table border="1"> <thead> <tr> <th colspan="2">APPROVALS</th> </tr> <tr> <th>DESIGNED BY</th> <th>CHECKED BY</th> </tr> </thead> <tbody> <tr> <td></td> <td></td> </tr> </tbody> </table>				APPROVALS		DESIGNED BY	CHECKED BY				
APPROVALS																											
DESIGNED BY	CHECKED BY																										
				10J	EA		ANODE BED DEEP WELL	21040-510-TYP-2018			CONTINUOUS CONCRETE COATING STANDARD FOR 36" / 30" PIPELINE	10				<table border="1"> <thead> <tr> <th colspan="2">APPROVALS</th> </tr> <tr> <th>DESIGNED BY</th> <th>CHECKED BY</th> </tr> </thead> <tbody> <tr> <td></td> <td></td> </tr> </tbody> </table>				APPROVALS		DESIGNED BY	CHECKED BY				
APPROVALS																											
DESIGNED BY	CHECKED BY																										

TRACT	1443 LIGHTSEY RANCHES, LTD., CLINTON D. LIGHTSEY, CLIFTON L. LIGHTSEY 1591 FT 2150+00 TO 2156+31	1445 LIGHTSEY RANCHES, LTD., CLINTON D. LIGHTSEY, CLIFTON L. LIGHTSEY 60 FT 2165+31 TO 2165+91	1445 SAM KEEN RD POLK COUNTY 64 FT 2165+91 TO 2166+55	1445 LIGHTSEY RANCHES, LTD., CLINTON D. LIGHTSEY, CLIFTON L. LIGHTSEY 1533 FT 2166+55 TO 2181+04	1447 LIGHTSEY RANCHES, LTD. 246 FT 2181+84 TO 2184+29	1447.1 HERBERT J. CURRY AND ROSEMARY CURRY 214 FT 2184+29 TO 2186+43	1449 HERBERT J. CURRY AND ROSEMARY CURRY 25 FT 2186+43 TO 2186+68	1449.1 STEVEN W. BURNETT 239 FT 2186+68 TO 2189+07	1447 LIGHTSEY RANCHES, LTD. 156 FT 2189+07 TO 2191+03	1462 EVE CLUDE AND BETTY JO WILLIAMS 43 FT 2191+03 TO 2191+46	1447 LIGHTSEY RANCHES, LTD. 476 FT 2191+46 TO 2196+22	1452.3 THE BENJ. A. AND PATRICIA S. ROYD TRUST 238 FT 2196+22 TO 2198+60	1447 LIGHTSEY RANCHES, LTD. 140 FT 2198+60 TO 2200+00
-------	---	---	---	---	--	---	--	---	--	--	--	---	--



DISCLAIMER: UNIVERSALPEGASUS INTERNATIONAL MAKES NO WARRANTY (EXPRESSED, IMPLIED OR OTHERWISE) THAT THE INFORMATION CONTAINED HEREIN IS ACCURATE OR COMPLETE AS TO ANY AND ALL SUBSURFACE CONDITIONS AND COMPOSITION. ANY RELIANCE CONTRACTOR PLACES ON THE INFORMATION CONTAINED HEREIN AS TO SUCH CONDITIONS, IS DONE SO AT ITS OWN RISK AND EXPENSE. IT IS THE SOLE RESPONSIBILITY OF THE CONTRACTOR TO CONTACT THE STATE "ONE CALL" SYSTEM PRIOR TO ANY EXCAVATION.

ENGINEERING DATA	STATIONING	MATCHLINE 2150+00	2150+00	2151+00	2154+00	2157+00	2160+00	2163+00	2166+00	2169+00	2172+00	2175+00	2178+00	2181+00	2184+00	2187+00	2190+00	2193+00	2196+00	2199+00	2200+00	MATCHLINE 2200+00
	MATERIAL																					
ENVIRONMENTAL DATA	STATIONS																					
	STATIONS																					

BILL OF MATERIALS				MISCELLANEOUS MATERIALS				TYPICAL DRAWINGS				GENERAL INFORMATION			
ITEM NO.	QTY	UOM	DESCRIPTION	ITEM NO.	QTY	UOM	DESCRIPTION	DWG/FIELD BOOK NO.	TITLE	1.	2.	3.	4.	5.	
1	4832	FT	36" O.D. X 0.5300 W.T. - APSL, 3/4" PFLZ, DSAM, 14-16 MILS FBE	100	EA		SET ON WEIGHTS	21040-510-TYP-20001	CATHODIC PROTECTION STD. SINGLE POINT TEST STATION, TYPE 1	1. THE MINIMUM DEPTH OF COVER FOR THE PROJECT IS 36 INCHES. ADDITIONAL DEPTH OF COVER IS REQUIRED FOR ROAD AND WATERBODY CROSSINGS, AND IS TO BE IN ACCORDANCE WITH REFERENCED PERMIT DRAWINGS, SITE SPECIFIC DRAWINGS, OR CONSTRUCTION SPECIFICATIONS, WHICHEVER IS MORE STRINGENT.	2. THE BOUNDARIES OF ALL WORK AREAS WILL BE CLEARLY MARKED AND ALL WORK SHALL REMAIN WITHIN THE DESIGNATED WORK AREA.	3. THE REQUIRED STATE ONE CALL NOTIFICATION IS THE RESPONSIBILITY OF THE CONSTRUCTION CONTRACTOR.	4. THE CONTRACTOR SHALL ACCESS THE WORK AREA USING ONLY PUBLIC ROADS AND APPROVED ACCESS ROADS.	5. ADDITIONAL WARNING SIGNS MAY BE REQUIRED AS DICTATED BY CONSTRUCTION CONTRACT.	
2	100	FT	36" O.D. X 0.626 W.T. - APSL, 3/4" PFLZ, DSAM, 14-16 MILS FBE & 24-30 MILS ARO	5	EA		PIPELINE MARKERS	21040-510-TYP-20002	CATHODIC PROTECTION STD. FOREIGN PIPELINE CROSSING TEST STATION, TYPE 2						
3	40	FT	36" O.D. X 0.750 W.T. - APSL, 3/4" PFLZ, DSAM, 14-16 MILS FBE	3	EA		WARNING SIGNS	21040-510-TYP-20003	TYPICAL OPEN CUT / BORE						
FITTINGS SUMMARY				CONTINUOUS CONCRETE COATING				PIPE COATING DATA				SPECIAL NOTES			
PIPE ASSEMBLIES				PIPE COATING DATA				SPECIAL NOTES							

FITTINGS SUMMARY				CONTINUOUS CONCRETE COATING				PIPE COATING DATA				SPECIAL NOTES			
ITEM NO.	QTY	UOM	DESCRIPTION	ITEM NO.	QTY	UOM	DESCRIPTION	ITEM NO.	QTY	UOM	DESCRIPTION	1.	2.	3.	
1	EA		MLBY 5 (20)	1	EA		PIPE COATING: 14 MIL MINIMUM FBE AND 24 MIL MINIMUM ARO	1	EA		INDUCTION BEND QUANTITIES ALONG WITH THEIR DESCRIPTIONS ARE LOCATED ON DRAWING 21040-SSE-EW-00001.	1.	2.	3.	

LEGEND			
	PIPELINE ROUTE		RIGHT-OF-WAY
	FENCING		FISHMAN FENCE
	UTILITY LINES		WETLAND
	ROAD		WATERBODY
	PIPELINE MARKER		AERIAL MARKER
	PIPELINE BEND		PIPELINE WARNING SIGN
	ANDE BED DEEP WELL		PIPELINE ACCESS POINT

REVISIONS				APPROVALS			
NO.	DESCRIPTION	DATE	REV BY	CHK BY	APP BY	CONSTRUCTION	PERMIT NO.
1	IFC (UPDATE ENV. RE-ROUTES, FOOT-PRINT)	2016-04-08	MB	MJ	RG	PROJECT MANAGER	MIN. TEST PRESSURE 1816 PSI
0	ISSUED FOR CONSTRUCTION	2015-12-15	MB	MJ	RG	PROJECT DEF. NO.	DESIGN PRESSURE 1440 PSI

A Subsidiary of Macquarie Health Services

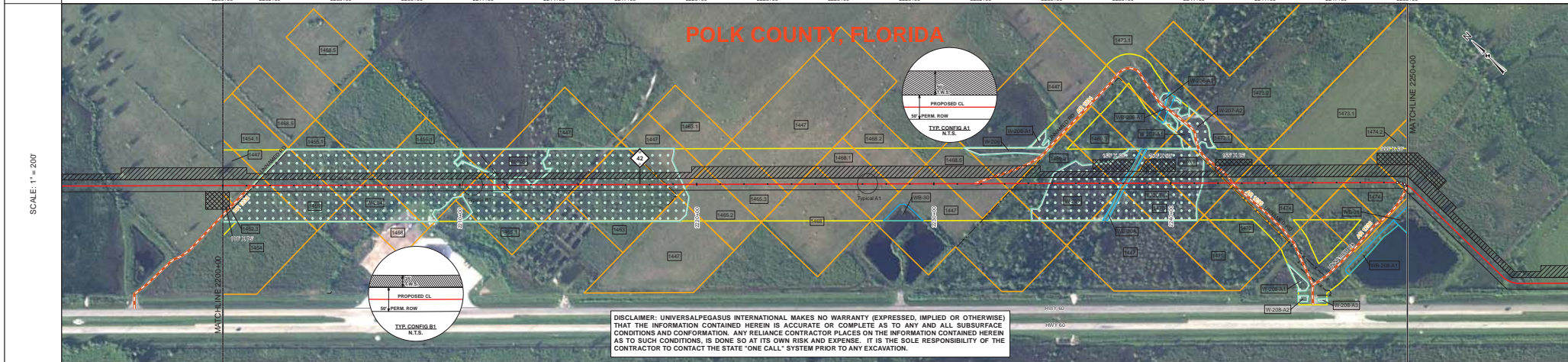
FLORIDA SOUTHEAST CONNECTION PROJECT
 STA. 2150+00 TO 2200+00
 DISCIPLINE: 03

FLORIDA SOUTHEAST CONNECTION
 ALIGNMENT SHEET
 POLK COUNTY, FLORIDA

SCALE: 1" = 200' 21040-510-ALS-00048 REV. 1

SHEET 48

TRACT	1447 LIGHTSEY RANCHES LTD. 142 FT 2200+00 TO 2201+44	1454 JAYSHV BSHAM LLC 242 FT 2201+44 TO 2202+00	1455 JAYSHV BSHAM LLC 242 FT 2202+00 TO 2204+42	1455.1 ANDEL ESTEVES AND MARY ESTEVES 90 FT 2204+42 TO 2205+44	1458 JAYSHV BSHAM LLC 368 FT 2205+44 TO 2206+78	1458.1 JAYSHV BSHAM LLC 368 FT 2206+78 TO 2210+44	1458.1 JAYSHV BSHAM LLC 368 FT 2210+44 TO 2211+45	1458.1 JAYSHV BSHAM LLC 368 FT 2211+45 TO 2215+05	1467 LIGHTSEY RANCHES LTD. 353 FT 2215+05 TO 2216+45	1463 JERRY THOMAS AND COLLEEN THOMAS 2216+45 TO 2218+45	1447 LIGHTSEY RANCHES LTD. 98 FT 2218+45 TO 2219+85	1463.2 LOB R. FETT AND BRADLEY FETT 138 FT 2219+85 TO 2221+04	1463.2 LOB R. FETT AND BRADLEY FETT 238 FT 2221+04 TO 2223+45	1447 LIGHTSEY RANCHES LTD. 86 FT 2223+45 TO 2224+24	1489 ARTHUR D. MARTEL KLEMPER 153 FT 2224+24 TO 2225+41	1488.1 LIGHTSEY RANCHES LTD. 234 FT 2225+41 TO 2228+15	1488.2 LIGHTSEY RANCHES LTD. 234 FT 2228+15 TO 2229+45	1447 LIGHTSEY RANCHES LTD. 166 FT 2229+45 TO 2230+45	1489.3 CAROL ANN WHELAN AND JEAN M. MCGARE 72 FT 2230+45 TO 2232+47	1447 LIGHTSEY RANCHES LTD. 188 FT 2232+47 TO 2233+48	1489.3 ROBERT OLIVER AND EASTER JONES 48 FT 2233+48 TO 2237+44	1489.3 ROBERT OLIVER AND EASTER JONES 48 FT 2237+44 TO 2238+12	1470 ROBERT OLIVER AND EASTER JONES 188 FT 2238+12 TO 2240+00	1470.1 ROBERT OLIVER AND EASTER JONES 243 FT 2240+00 TO 2242+41	1473.1 LIGHTSEY RANCHES LTD. 30 FT 2242+41 TO 2242+71	1474 JIM STONE 205 FT 2242+71 TO 2244+78	1473.1 LIGHTSEY RANCHES LTD. 258 FT 2244+78 TO 2247+35	1474 JIM STONE 218 FT 2247+35 TO 2249+54	1474.2 CHAD WATSON AND JARED BROOKS 48 FT 2249+54 TO 2250+00
-------	--	---	---	--	---	---	---	---	--	---	---	---	---	---	---	--	--	--	---	--	--	--	---	---	---	--	--	--	--



SURVEY DATA	STATIONING	MATCHLINE 2200+00	2200+00 CL. 45. 2025 2200+00 BARRIQUADED 2200+00 FENCE	2206+32	2211+72	2224+45	2230+45	2232+47	2233+48	2240+00	2242+71	2244+78	2247+35	2250+00
	MATERIAL	Class I	34-9K4 SBW 10.5 CC	40-8K4 SBW 13.5 CC	75-9K4 SBW 10.5 CC	3828	72-9K4 SBW 10.5 CC							
ENGINEERING DATA	REFERENCE DRAWING													
	CLASSIFICATION													
ENVIRONMENTAL DATA	STATIONS	2201+00 2201+00 2201+00	2211+45 2211+45 2211+45 2211+45 2211+45 2211+45	2211+41	2234+49	2241+43 2241+43 2241+43 2241+43	2242+40							
	STATIONS													

BILL OF MATERIALS				MISCELLANEOUS MATERIALS				TYPICAL DRAWINGS				GENERAL INFORMATION			
ITEM NO.	QTY	UOM	DESCRIPTION	QTY	UOM	DESCRIPTION	DWG/FIELD BOOK NO.	TITLE	1	2	3	4	5	6	
1	1440	FT	36" O.D. x 0.521" W.T. APR SL. 470, PSLZ, DRAW, 14-16 MILS FREE	245	EA	SET ON WEIGHTS	21040-510-TYP-2001	CATHODIC PROTECTION STD. SINGLE POINT TEST SECTION, TYPE 1	1. THE MINIMUM DEPTH OF COVER FOR THE PROJECT IS 36 INCHES. ADDITIONAL DEPTH OF COVER IS REQUIRED FOR ROAD AND WATERWAY CROSSINGS, AND IS TO BE IN ACCORDANCE WITH REFERENCED PERMIT DRAWINGS, SITE SPECIFIC DRAWINGS, OR CONSTRUCTION SPECIFICATIONS, WHICHEVER IS MORE STRINGENT.	2. THE BOUNDARIES OF ALL WORK AREAS WILL BE CLEARLY MARKED AND ALL WORK SHALL REMAIN WITHIN THE DESIGNATED WORK AREA.	3. THE REQUIRED STATE ONE CALL NOTIFICATION IS THE RESPONSIBILITY OF THE CONSTRUCTION CONTRACTOR.	4. THE CONTRACTOR SHALL ACCESS THE WORK AREA USING ONLY PUBLIC ROADS AND APPROVED ACCESS ROADS.	5. ADDITIONAL WARNING SIGNS MAY BE REQUIRED AS DICTATED BY CONSTRUCTION CONTRACT.	6. MAP PROJECTION: NAD 1983 HARN STATE PLANE FLORIDA EAST ZONE 1801 FEET. VERTICAL DATUM: NAVD 83.	
2	5	EA	36" O.D. x 0.750" W.T. APR SL. 470, PSLZ, DRAW, 14-16 MILS FREE	1	EA	CP TEST STATION TYPE 1	21040-510-TYP-2002	CATHODIC PROTECTION STD. FOREIGN PIPELINE CROSSING TEST STATION, TYPE 2							
3	1	EA		1	EA	CP TEST STATION TYPE 2	21040-510-TYP-2012								
4	1	EA		1	EA	AERIAL MARKERS	21040-510-TYP-2013	CONTINUOUS CONCRETE COATING STANDARD FOR 36"/30" PIPELINE							
5	1	EA		1	EA	TYPICAL SADDLE BAG WEIGHTS	21040-510-TYP-2014	CONTINUOUS CONCRETE COATING STANDARD FOR 36"/30" PIPELINE							
6	1	EA		1	EA	WARNING SIGN DETAIL	21040-510-TYP-2015	AERIAL MARKER INSTALLATION DETAIL							
7	1	EA		1	EA	7" OF CONCRETE COATING (140 PCF DENSITY CONCRETE)	21040-510-TYP-2016	AERIAL MARKER DETAIL							
8	1	EA		1	EA	PIPE COATING DATA	21040-510-TYP-2017	TYPICAL PIPELINE MARKER ASSEMBLY							
9	1	EA		1	EA	PIPE COATING DATA	21040-510-TYP-2018	TYPICAL PIPELINE MARKER ASSEMBLY							

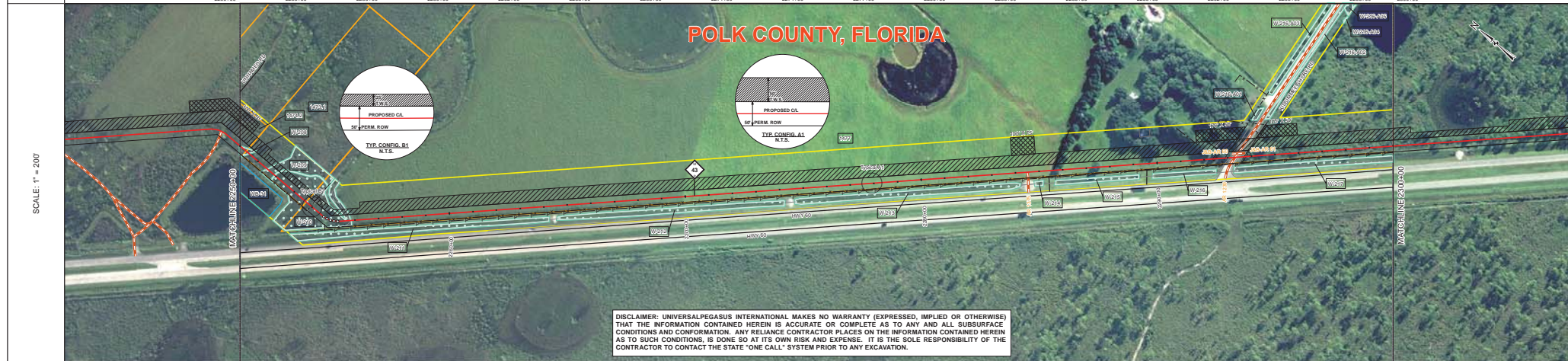
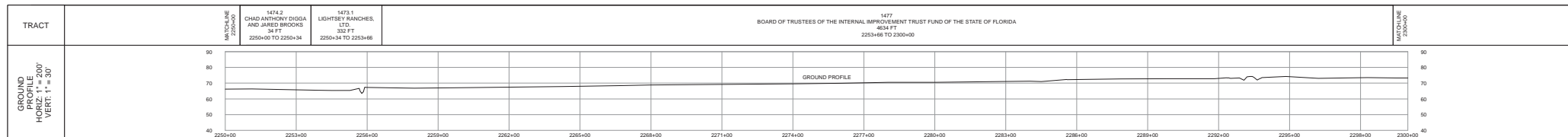
FITTINGS SUMMARY		CONCRETE COATING		PIPE COATING DATA							
ITEM NO.	QTY	UOM	DESCRIPTION	ITEM NO.	QTY	UOM	DESCRIPTION	ITEM NO.	QTY	UOM	DESCRIPTION
1	1	EA	7" OF CONCRETE COATING (140 PCF DENSITY CONCRETE)	1	1	EA	PIPE COATING: 14 MIL MINIMUM FBE AND 24 MIL MINIMUM ARO	1	1	EA	SINTH WELD COATING: 2 PART EPOXY
2	1	EA		2	1	EA	INTERNAL COATING (YES/NO): NO	2	1	EA	

LEGEND			
PIPELINE ROUTE	PROPOSED CL	36" PERM ROW	TYP. CONFIG A1
INDUCTION BEND QUANTITIES ALONG WITH THEIR DESCRIPTIONS ARE LOCATED ON DRAWING 21040-510-MTL-00001.			

REVISIONS				APPROVALS			
NO.	DESCRIPTION	DATE	REV	CHK	APP	DRAWN BY	MB
G	ISSUED FOR 90% REVIEW	2015-08-14	MB	MJ	RG		
F	ISSUED FOR FINAL REVIEW	2014-09-05	MB	RG	LD		
E	ISSUED FOR PERC FILING	2014-08-15	MB	RG	LD		
D	ISSUED FOR 60% REVIEW	2014-06-16	MB	RG	LD		

FLORIDA SOUTHEAST CONNECTION
 ALIGNMENT SHEET
 POLK COUNTY, FLORIDA

STA. 2200+00 TO 2250+00 DISCIPLINE: 03
 SCALE: 1" = 200' 21040-510-ALS-00049 REV. G
 SHEET 49



DISCLAIMER: UNIVERSALPEGASUS INTERNATIONAL MAKES NO WARRANTY (EXPRESSED, IMPLIED OR OTHERWISE) THAT THE INFORMATION CONTAINED HEREIN IS ACCURATE OR COMPLETE AS TO ANY AND ALL SUBSURFACE CONDITIONS AND CONFORMATION. ANY RELIANCE CONTRACTOR PLACES ON THE INFORMATION CONTAINED HEREIN AS TO SUCH CONDITIONS, IS DONE SO AT ITS OWN RISK AND EXPENSE. IT IS THE SOLE RESPONSIBILITY OF THE CONTRACTOR TO CONTACT THE STATE "ONE CALL" SYSTEM PRIOR TO ANY EXCAVATION.

SURVEY DATA		STATIONING	
MATCHLINE 2250+00		MATCHLINE 2300+00	
1474.2 CHAD ANTHONY DIGGA AND JARED BRIDGES 34 FT 2250+34 TO 2250+34 1473.1 LIGHTSEY RANCHES, LTD. 332 FT 2250+34 TO 2253+66		1477 BOARD OF TRUSTEES OF THE INTERNAL IMPROVEMENT TRUST FUND OF THE STATE OF FLORIDA 4034 FT 2253+66 TO 2300+00	
ENGINEERING DATA		MATERIAL	
REFERENCE DRAWING CLASS LOCATION MINIMUM DEPTH OF COVER CL-BITUMEN CATHODIC PROTECTION		01-902 SEW 10.5 CC 2250+00 2254+00 2258+00 2262+00 2266+00 2270+00 2274+00 2278+00 2282+00 2286+00 2290+00 2294+00 2298+00 2300+00	
ENVIRONMENTAL DATA		STATIONS	
INTERSECTION/WETLAND CROSSINGS INTERSECTION/WETLAND VEGETATION THREATENED AND ENDANGERED SPECIES TRADING CONSTRAINT CONSTRAINT 1 CONSTRAINT 2 CONSTRAINT 3 CONSTRAINT 4		2250+00 2254+00 2258+00 2262+00 2266+00 2270+00 2274+00 2278+00 2282+00 2286+00 2290+00 2294+00 2298+00 2300+00	

BILL OF MATERIALS				MISCELLANEOUS MATERIALS				TYPICAL DRAWINGS				GENERAL INFORMATION				
ITEM NO.	QTY	UOM	DESCRIPTION	QTY	UOM	DESCRIPTION	DWG/FIELD BOOK NO.	TITLE	QTY	UOM	DESCRIPTION	DWG/FIELD BOOK NO.	TITLE	QTY	UOM	DESCRIPTION
1	4940	FT	36" O.D. x 0.5300 W.T. - API 5L X70 PSL2 DRAM, 14-16 MILS FBE			SET ON WEIGHTS	21040-510-TYP-20001	CATHODIC PROTECTION STD. SINGLE POINT TEST STATION, TYPE 1								
2	60	FT	36" O.D. x 0.625 W.T. API 5L X70 PSL2 DRAM, 14-16 MILS FBE & 24-30 MILS ARO			PIPELINE MARKERS	21040-510-TYP-20002	CATHODIC PROTECTION STD. FOREIGN PIPELINE CROSSING TEST STATION, TYPE 2								
FITTINGS SUMMARY ITEM NO. QTY UOM MATERIAL NUMBER DESCRIPTION				CONTINUOUS CONCRETE COATING ITEM NO. QTY UOM MATERIAL NUMBER DESCRIPTION				PIPE COATING DATA PIPE COATING: 14 MIL MINIMUM FBE AND 24 MIL MINIMUM ARO SMOOTH WELD COATING: 2 PART EPOXY INTERNAL COATING (YES/NO): NO								

LEGEND			
	PIPELINE ROUTE		FENCING
	UTILITY LINES		WETLAND
	ROAD		ROW
	AERIAL MARKER		SURVEY POINT
	TEST STATION		WARNING SIGN
	MATERIAL WELL		WATER WELL
	ANODE BED DEEP WELL		400 ENTRY/EXIT

REVISIONS				APPROVALS			
NO.	DESCRIPTION	DATE	REV BY	CHK BY	APP BY	CHECKED BY	CONSTRUCTION PERMIT NO.
1	IFC (UPDATE ENV. RE-ROUTES, FOOT-PRINT)	2016-04-08	MB	MJ	RG	PROJECT MANAGER	MAINTENANCE OPERATION REGION
0	ISSUED FOR CONSTRUCTION	2015-12-15	MB	MJ	RG	PROJECT DEF. NO.	MIN. TEST PRESSURE 1816 PSI DESIGN PRESSURE 1440 PSI

FLORIDA SOUTHEAST CONNECTION PROJECT
 STA. 2250+00 TO 2300+00
 DISCIPLINE: 03
FLORIDA SOUTHEAST CONNECTION
 ALIGNMENT SHEET
 POLK COUNTY, FLORIDA
 SCALE: 1" = 200' 21040-510-ALS-00050 REV. 1
 SHEET 50