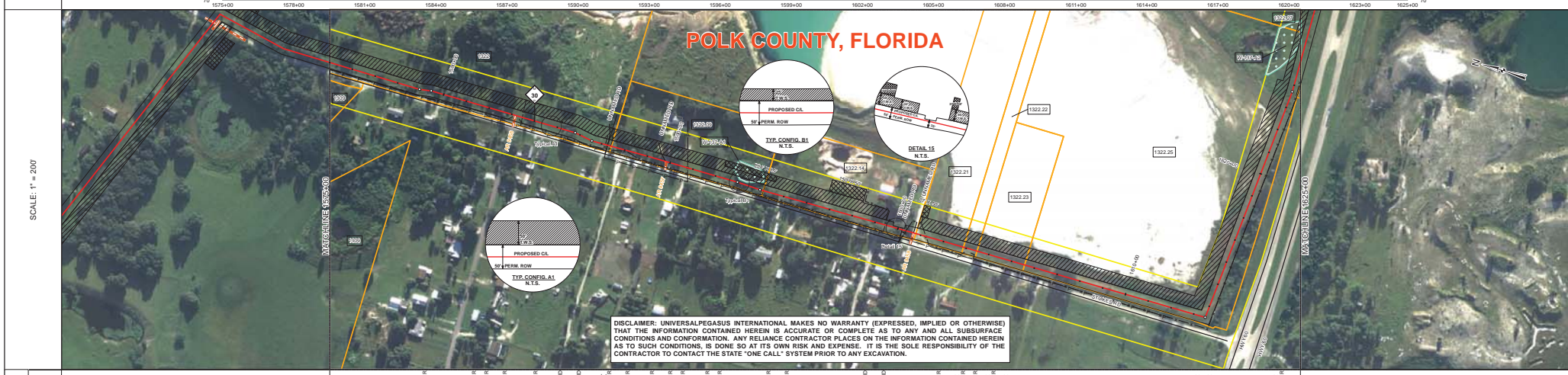
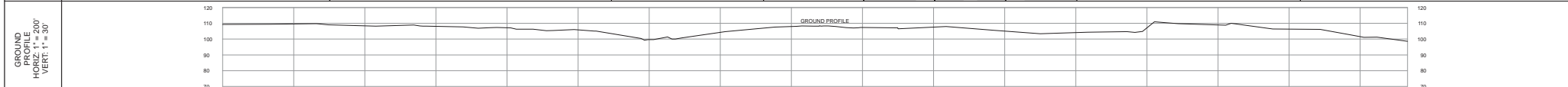


TRACT	1922 FLORIDA ROCK INDUSTRIES, INC. 1242 FT 1575+00 TO 1587+42	1322.09 FLORIDA ROCK INDUSTRIES, INC. 687 FT 1587+42 TO 1594+10	1322.14 TIMOTHY MICHAEL TAYLOR AND MATTHEW JOHN REISBERG 1594+10 TO 1600+79	1322.21 FLORIDA ROCK INDUSTRIES, INC. 200 FT 1600+79 TO 1602+88	1322.22 FLORIDA ROCK INDUSTRIES, INC. 80 FT 1602+88 TO 1603+48	1322.23 FLORIDA ROCK INDUSTRIES, INC. 208 FT 1603+48 TO 1605+58	1322.25 FLORIDA ROCK INDUSTRIES, INC. 1544 FT 1605+58 TO 1625+00
-------	--	--	--	--	---	--	---



**DISCLAIMER: UNIVERSALPEGASUS INTERNATIONAL MAKES NO WARRANTY (EXPRESSED, IMPLIED OR OTHERWISE) THAT THE INFORMATION CONTAINED HEREIN IS ACCURATE OR COMPLETE AS TO ANY AND ALL SUBSURFACE CONDITIONS AND CONFORMATION. ANY RELIANCE CONTRACTOR PLACES ON THE INFORMATION CONTAINED HEREIN AS TO SUCH CONDITIONS, IS DONE SO AT ITS OWN RISK AND EXPENSE. IT IS THE SOLE RESPONSIBILITY OF THE CONTRACTOR TO CONTACT THE STATE "ONE CALL" SYSTEM PRIOR TO ANY EXCAVATION.**

SURVEY DATA	STATIONING	MATCHLINE 1575+00	MATCHLINE 1625+00
	ENGINEERING DATA	MATERIAL	MATCHLINE 1575+00
		REFERENCE DRAWING	Class III
ENVIRONMENTAL DATA	STATIONS	MATCHLINE 1575+00	MATCHLINE 1625+00
	PERMITTING/REGULATORY CONTROL	THIS BAND NOT UTILIZED	
	WATERBODIES/WETLAND CROSSINGS	THIS BAND NOT UTILIZED	
	SPECIAL CONCERNS	THIS BAND NOT UTILIZED	

BILL OF MATERIALS			MISCELLANEOUS MATERIALS			TYPICAL DRAWINGS			GENERAL INFORMATION			LEGEND			REVISIONS			APPROVALS																								
ITEM NO.	QTY	UOM	RECN. NUMBER	MATERIAL NUMBER	DESCRIPTION	QTY	UOM	RECN. NUMBER	MATERIAL NUMBER	DESCRIPTION	DWG/FIELD BOOK NO.	TITLE	1: THE MINIMUM DEPTH OF COVER FOR THE PROJECT IS 36 INCHES. ADDITIONAL DEPTH OF COVER IS REQUIRED FOR ROAD AND WATERBODY CROSSINGS, AND IS TO BE IN ACCORDANCE WITH REFERENCED PERMIT DRAWINGS, SITE SPECIFIC DRAWINGS, OR CONSTRUCTION SPECIFICATIONS, WHICHEVER IS MORE STRINGENT.	2: THE BOUNDARIES OF ALL WORK AREAS WILL BE CLEARLY MARKED AND ALL WORK SHALL REMAIN WITHIN THE DESIGNATED WORK AREA.	3: THE REQUIRED STATE ONE CALL NOTIFICATION IS THE RESPONSIBILITY OF THE CONSTRUCTION CONTRACTOR.	4: THE CONTRACTOR SHALL ACCESS THE WORK AREA USING ONLY PUBLIC ROADS AND APPROVED ACCESS ROADS.	5: ADDITIONAL WARNING SIGNS MAY BE REQUIRED AS DICTATED BY CONSTRUCTION CONTRACT.	6: MAP PROJECTION: NAD 1983 HAIN STATE PLANE FLORIDA EAST TIPS 0801 FEET, VERTICAL DATUM: NAD 83.	1: WELD PIPE 2: END PIPE 3: LINE PIPE 4: METER LINE 5: TRANSITION BAND 6: CORE CONC. CHST 7: BUREAU CABLE 8: WIRELINE 9: VERTY LINE 10: RAILROAD 11: GENERAL RAILWAY 12: PIPELINE ACCESS 13: ROAD BOUNDARY 14: ROW PARCEL 15: PLUS SECTION LINE 16: TRAP 17: WATER WELL 18: HOE DRVY /EOT	19: WETLAND BUFFER (SEE PERM)	20: TEMPORARY WARNING SIGNS	21: ADDITIONAL TEMPORARY WARNING SIGNS	22: NON FORCIBLY WETLAND	23: FORESTED WETLAND	24: WATERBODY	25: FENCED WETLAND	26: RIBBONY	27: TYPICAL INTERNAL CONNECTION	28: POINT OF INTERSECTION (POI)	29: VERTICAL FITTING	30: SPREAD BENCH	31: ENVIRONMENTAL SURVEY AREA	NO.	DESCRIPTION	DATE	REV. BY	CHK. BY	APP. BY	DRAWN BY:	MB	CONSTRUCTION PERMIT NO.	074- 1575+00 TO 1625+00
4	140	FT			36" O.D. x 0.150 W.T. API 5L X70 PSL2 DS4W, 14-16 MILS FBE & 24-30 MILS ARO	0	EA			SET ON WEIGHTS	21040-510-TYP-20001	CATHODIC PROTECTION STD. SINGLE POINT TEST STATION, TYPE 1											1	IFC (UPDATE ENV. RE-ROUTES, FOOT-PRINT)	2016-04-08	MB	MJ	RJ														
5	400	FT			36" O.D. x 0.150 W.T. API 5L X70 PSL2 DS4W, 14-16 MILS FBE	4	EA			WARNING SIGNS	21040-510-TYP-20002	CATHODIC PROTECTION STD. FOREIGN PIPELINE CROSSING TEST STATION, TYPE 2											0	ISSUED FOR CONSTRUCTION	2015-12-15	MB	MJ	RJ														
					CP TEST STATION TYPE 1	1	EA				21040-510-TYP-20013	TYPICAL SADDLE BAG WEIGHTS																														
					CP TEST STATION TYPE 2	0	EA				21040-510-TYP-20014	WARNING SIGN DETAIL																														
					AND/BE DEEP WELL	0	EA				21040-510-TYP-20015	AERIAL MARKER INSTALLATION DETAIL																														
					PIPE COATING DATA						21040-510-TYP-20016	AERIAL MARKER DETAIL	1: INDUCTION BEND QUANTITIES ALONG WITH THEIR DESCRIPTIONS ARE LOCATED ON DRAWING 21040-510-FW-00001.																													
					PIPE COATING: 14 MIL MINIMUM FBE AND 24 MIL MINIMUM ARO						21040-510-TYP-20017	TYPICAL PIPELINE MARKER ASSEMBLY	2: SEE ARK DRAWING PACKAGE FOR AND/BE DEEP WELL.																													
					INTERNAL COATING (YES/NO): NO						21040-510-TYP-20018	PIPELINE MARKER "WARNING" DETAIL																														

**FLORIDA SOUTHEAST CONNECTION PROJECT**  
STA. 1575+00 TO 1625+00

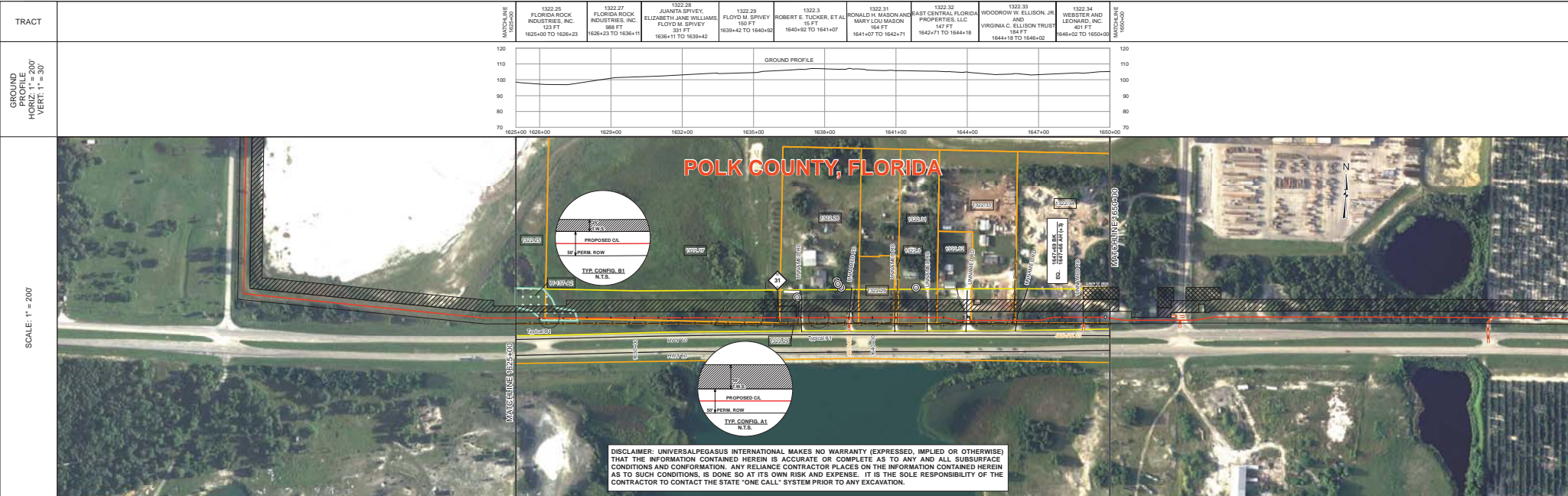
**FLORIDA SOUTHEAST CONNECTION ALIGNMENT SHEET**  
**POLK COUNTY, FLORIDA**

SCALE: 1" = 200' 21040-510-ALS-00036 REV. 1

UniversalPegasus  
INTERNATIONAL  
A Subsidiary of Washington Health Solutions

**FLORIDA SOUTHEAST CONNECTION PROJECT**  
DISCIPLINE: 03

SHEET 36

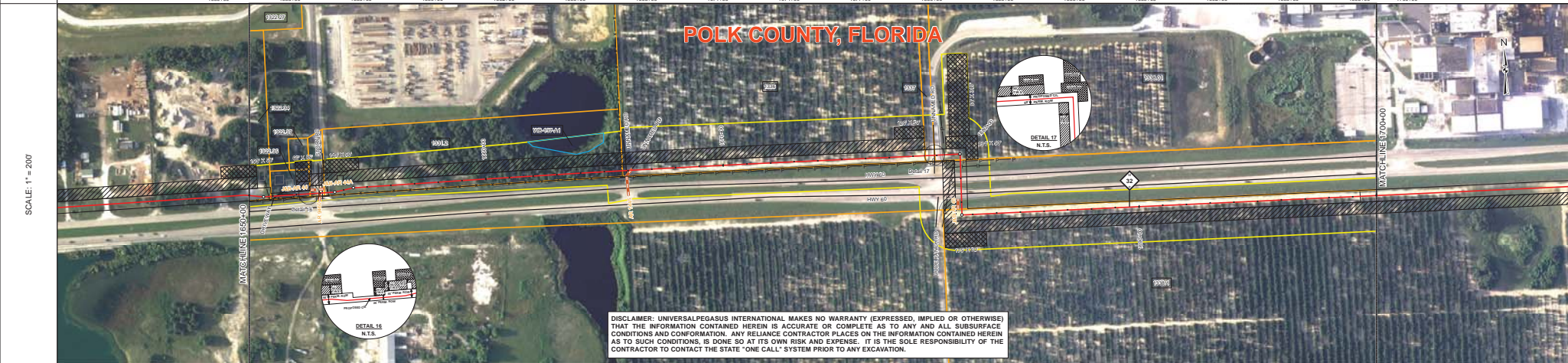
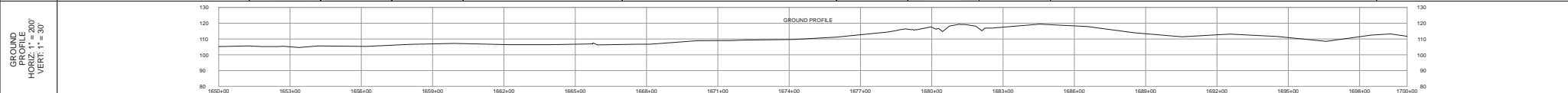


STATIONING	1625+00	1626+00	1629+00	1632+00	1635+00	1638+00	1641+00	1644+00	1647+00	1650+00
STATIONING	MATCHLINE 1625+00	1626+00	1629+00	1632+00	1635+00	1638+00	1641+00	1644+00	1647+00	MATCHLINE 1650+00
MATERIAL	1626+00 30" 814 38W 135 CC	1629+00 1144	1632+00 1359	1635+00	1638+00	1641+00	1644+00	1647+00	1650+00	MATCHLINE 1650+00
ENVIRONMENTAL DATA	1626+00 1629+00	1632+00 1635+00	1638+00 1641+00	1644+00 1647+00	1650+00	1626+00 1629+00	1632+00 1635+00	1638+00 1641+00	1644+00 1647+00	1650+00
STATIONS	1626+00 1629+00	1632+00 1635+00	1638+00 1641+00	1644+00 1647+00	1650+00	1626+00 1629+00	1632+00 1635+00	1638+00 1641+00	1644+00 1647+00	1650+00
ENVIRONMENTAL DATA	1626+00 1629+00	1632+00 1635+00	1638+00 1641+00	1644+00 1647+00	1650+00	1626+00 1629+00	1632+00 1635+00	1638+00 1641+00	1644+00 1647+00	1650+00

BILL OF MATERIALS		MISCELLANEOUS MATERIALS		TYPICAL DRAWINGS		GENERAL INFORMATION		
ITEM NO.	QTY UOM	RECN. NO.	MATERIAL NUMBER	DESCRIPTION	DWG FIELD BOOK NO.	TITLE	1. THE MINIMUM DEPTH OF COVER FOR THE PROJECT IS 36 INCHES. ADDITIONAL DEPTH OF COVER IS REQUIRED FOR ROAD AND WATERBODY CROSSINGS AND IS TO BE IN ACCORDANCE WITH REFERENCED PERMIT DRAWINGS, SITE SPECIFIC DRAWINGS, OR CONSTRUCTION SPECIFICATIONS, WHICHEVER IS MORE STRINGENT.	
1	1359	EA		36" O.D. x 0.825" W.T., APSL, 3/16" PSLZ, DRAW, 14-18 MILS FBE	21040-510-TYP-2001	CATHODIC PROTECTION STD. SINGLE POINT TEST STATION, TYPE 1	2. THE BOUNDARIES OF ALL WORK AREAS WILL BE CLEARLY MARKED AND ALL WORK SHALL REMAIN WITHIN THE DESIGNATED WORK AREA.	
2	EA			36" O.D. x 0.750" W.T., APSL, 3/16" PSLZ, DRAW, 14-18 MILS FBE	21040-510-TYP-2002	CATHODIC PROTECTION STD. FOREIGN PIPELINE CROSSING TEST STATION, TYPE 2	3. THE REQUIRED STATE ONE CALL NOTIFICATION IS THE RESPONSIBILITY OF THE CONSTRUCTION CONTRACTOR.	
3	EA			CP TEST STATION TYPE 1	21040-510-TYP-2013	CONTINUOUS CONCRETE COATING STANDARD FOR 36"/30" PIPELINE	4. THE CONTRACTOR SHALL ACCESS THE WORK AREA USING ONLY PUBLIC ROADS AND APPROVED ACCESS ROADS.	
4	EA			CP TEST STATION TYPE 2	21040-510-TYP-2014	TYPICAL SCAFFOLD BAG WEIGHTS	5. ADDITIONAL WARNING SIGNS MAY BE REQUIRED AS DICTATED BY CONSTRUCTION CONTRACT.	
5	EA			AERIAL MARKERS	21040-510-TYP-2015	AERIAL MARKER INSTALLATION DETAIL	6. MAP PROJECTION: NAD 1983 HURN STATE PLANE FLORIDA EAST FIPS 0801 FEET, VECTOR DATUM, NAED 88.	
6	EA			ANODE BED DEEP WELL	21040-510-TYP-2016	AERIAL MARKER DETAIL	SPECIAL NOTES	
FITTINGS SUMMARY		CONTINUOUS CONCRETE COATING		PIPE COATING DATA		1. INDUCTION BEND QUANTITIES ALONG WITH THEIR DESCRIPTIONS ARE LOCATED ON DRAWING 21040-SIG-EW-00001.		
ITEM NO.	QTY UOM	RECN. NO.	MATERIAL NUMBER	DESCRIPTION	21040-510-TYP-2017	TYPICAL PIPELINE-MARKER ASSEMBLY	2. SEE ARK DRAWING PACKAGE FOR ANODE BED DEEP WELL.	
PIPE ASSEMBLIES		PIPE COATING DATA		21040-510-TYP-2018		PIPELINE MARKER "WARNING" DECAL		
		PIPE COATING: 14 MIL MINIMUM FBE AND 24 MIL MINIMUM ARO						
		SOUTH WELD COATING: 2 PART EPOXY						
		INTERNAL COATING (YES/NO): NO						

REVISIONS		APPROVALS	
NO.	DESCRIPTION	DATE	REV BY
1	IFC (UPDATE ENV. RE-ROUTES, FOOT-PRINT)	2016-04-08	MB MJ
2	ISSUED FOR CONSTRUCTION	2015-12-15	MB MJ
APPROVAL		COMPANY	
ENVIRONMENTAL		LAND	
 UNIVERSALPEGASUS INTERNATIONAL A Subsidiary of Macquarie Health Services		 FLORIDA SOUTHEAST CONNECTION PROJECT STA. 1625+00 TO 1650+00	
		FLORIDA SOUTHEAST CONNECTION ALIGNMENT SHEET POLK COUNTY, FLORIDA	
		SCALE: 1" = 200'	21040-510-ALS-00037
SHEET 37			

TRACT	MATCHLINE 1700+00	1322.34 WEBSTER AND LEONARD, INC. 92 FT 1650+00 TO 1650+92	1322.35 WEBER PALMER AND VOCINAWA PRAIRIE 165 FT 1650+92 TO 1652+47	STORY RD POLK COUNTY 80 FT 1652+47 TO 1653+17	1331.2 CEMX CONSTRUCTION MATERIALS FLORIDA, LLC 1289 FT 1653+17 TO 1665+75	1336 UFGO, INC. 1279 FT 1665+75 TO 1678+51	1337 CITROSOLICO NORTH AMERICA, INC 48 FT 1678+51 TO 1679+01	1338.01 CITROSOLICO NORTH AMERICA, INC 132 FT 1679+01 TO 1680+23	HWY 60 FOTC 206 FT 1680+23 TO 1682+29	1338.1 ALCOMA PROPERTIES, LTD 1771 FT 1682+29 TO 1700+00	MATCHLINE 1700+00
-------	-------------------	--	---	--	---	---	--	--	--	---	-------------------



**DISCLAIMER:** UNIVERSALPEGASUS INTERNATIONAL MAKES NO WARRANTY (EXPRESSED, IMPLIED OR OTHERWISE) THAT THE INFORMATION CONTAINED HEREIN IS ACCURATE OR COMPLETE AS TO ANY AND ALL SUBSURFACE CONDITIONS AND CONFORMATION. ANY RELIANCE CONTRACTOR PLACES ON THE INFORMATION CONTAINED HEREIN AS TO SUCH CONDITIONS, IS DONE SO AT ITS OWN RISK AND EXPENSE. IT IS THE SOLE RESPONSIBILITY OF THE CONTRACTOR TO CONTACT THE STATE "ONE CALL" SYSTEM PRIOR TO ANY EXCAVATION.

SURVEY DATA		STATIONING	
STATIONING		MATCHLINE 1650+00	MATCHLINE 1700+00
<p><b>ENGINEERING DATA</b></p> <p>MATERIAL: 21040-443-PMW-00030</p> <p>CLASSIFICATION: Class III</p> <p>DEPTH OF COVER: 3' SEE REF DWG 1</p> <p>CATHODIC PROTECTION: TYPE I</p> <p>INTERFERING UTILITY CROSSINGS: NONE</p> <p>ENVIRONMENTAL DATA:</p> <p>PERMANENT BROWN CONTROL: NONE</p> <p>SOIL SALVAGE: NONE</p> <p>THREATENED AND ENDANGERED SPECIES: Potential Sand Skink Habitat</p> <p>TRAVEL CONSTRAINT: NONE</p> <p>CONSTRAINT 1: NONE</p> <p>CONSTRAINT 2: NONE</p> <p>CONSTRAINT 3: NONE</p> <p>CONSTRAINT 4: NONE</p>			

BILL OF MATERIALS					MISCELLANEOUS MATERIALS					TYPICAL DRAWINGS					GENERAL INFORMATION														
QTY	UOM	REON	MATERIAL	DESCRIPTION	QTY	UOM	REON	MATERIAL	DESCRIPTION	DWG/FIELD BOOK NO.	TITLE	1. THE MINIMUM DEPTH OF COVER FOR THE PROJECT IS 36 INCHES. ADDITIONAL DEPTH OF COVER IS REQUIRED FOR ROAD AND WATERBURY CROSSINGS, AND IS TO BE IN ACCORDANCE WITH REFERENCED PERMIT DRAWINGS, SITE SPECIFIC DRAWINGS OR CONSTRUCTION SPECIFICATIONS. WHICHEVER IS MORE STRINGENT.			2. THE BOUNDARIES OF ALL WORK-AREAS WILL BE CLEARLY MARKED AND ALL WORK SHALL REMAIN WITHIN THE DESIGNATED WORK AREA.			3. THE REQUIRED STATE ONE CALL NOTIFICATION IS THE RESPONSIBILITY OF THE CONSTRUCTION CONTRACTOR.			4. THE CONTRACTOR SHALL ACCESS THE WORK AREA USING ONLY PUBLIC ROADS AND APPROVED ACCESS ROADS.			5. ADDITIONAL WARNING SIGNS MAY BE REQUIRED AS DICTATED BY CONSTRUCTION CONTRACT.			6. MAP PROJECTION: NAD 1983 HARN STATE PLANE FLORIDA, EAST PORTION; UTM FEET; VERTICAL DATUM: NAVD 88.		
4	560	EA		36" O.D. x 0.750" W.T., API 5L, X70, PSL2, OS&W, 14-16 MLS FREE & 24-30 MLS ARO					SET ON WEIGHTS	21040-510-TYP-20001	CATHODIC PROTECTION STD. SINGLE POINT TEST STATION, TYPE I	TYPICAL OPEN CUT / BORE			CONTINUOUS CONCRETE COATING STANDARD FOR 36"/30" PIPELINE			SERIAL MARKER DETAIL			SERIAL MARKER DETAIL			SERIAL MARKER DETAIL					
1	4213	EA		30" O.D. x 0.625" W.T., API 5L, X70, PSL2, OS&W, 14-16 MLS FREE					WARNING SIGNS	21040-510-TYP-20002	CATHODIC PROTECTION STD. FOREIGN PIPELINE CROSSING TEST STATION, TYPE 2	GP TEST STATION TYPE 1			21040-510-TYP-20028			TYPICAL SADDLE BAG WEIGHT			SERIAL MARKER DETAIL			SERIAL MARKER DETAIL					
8	207	EA		36" O.D. x 0.750" W.T., API 5L, X70, PSL2, OS&W, 14-16 MLS FREE					GP TEST STATION TYPE 2	21040-510-TYP-20029	CATHODIC PROTECTION STD. FOREIGN PIPELINE CROSSING TEST STATION, TYPE 2	GP TEST STATION TYPE 2			21040-510-TYP-20014			SERIAL MARKER INSTALLATION DETAIL			SERIAL MARKER DETAIL			SERIAL MARKER DETAIL					
<b>FITTINGS SUMMARY</b>					<b>CONTINUOUS CONCRETE COATING</b>					<b>PIPE COATING DATA</b>					<b>PIPE ASSEMBLIES</b>														
QTY	UOM	REON	MATERIAL	DESCRIPTION	QTY	UOM	REON	MATERIAL	DESCRIPTION	21040-510-TYP-20015	SERIAL MARKER INSTALLATION DETAIL	INTERNAL COATING (YES/NO): NO			INTERNAL COATING (YES/NO): NO														
2	EA			80" 3R HORIZONTAL FITTING						21040-510-TYP-20016	SERIAL MARKER DETAIL	INTERNAL COATING (YES/NO): NO																	

LEGEND			
	Pipeline Route		Fence
	Easement		Telephone Line
	Existing Road		Power Line
	Forestry Boundary		Water Line
	Survey Boundary		Gas Line
	Utility Line		Sewer Line
	Material Area		Wetland
	Aerial Marker		Road
	Test Station		Pipeline Relocation
	60 Feet +/- Easement		Aerial Marker Detail
	Pipeline Marker		Material Detail
	Aerial Marker Detail		Aerial Marker Detail
	Anode Bed Detail		Anode Bed Detail

REVISIONS				
NO.	DESCRIPTION	DATE	REV BY	CHK BY
1	IFC (UPDATE ENV. RE-ROUTES, FOOTPRINT)	2016-04-08	MB	MJ
0	ISSUED FOR CONSTRUCTION	2015-12-15	MB	MJ

**APPROVALS**

CHECKED BY: MB  
PROJECT MANAGER: MJ  
PROJECT DEF. NO.: 21040-510-ALS-00038

UNIVERSAL PEGASUS INTERNATIONAL  
A Subsidiary of Manugest South Industries

FLORIDA SOUTHEAST CONNECTION

FLORIDA SOUTHEAST CONNECTION PROJECT  
ALIGNMENT SHEET  
POLK COUNTY, FLORIDA

SCALE: 1" = 200'  
21040-510-ALS-00038

REV. 1

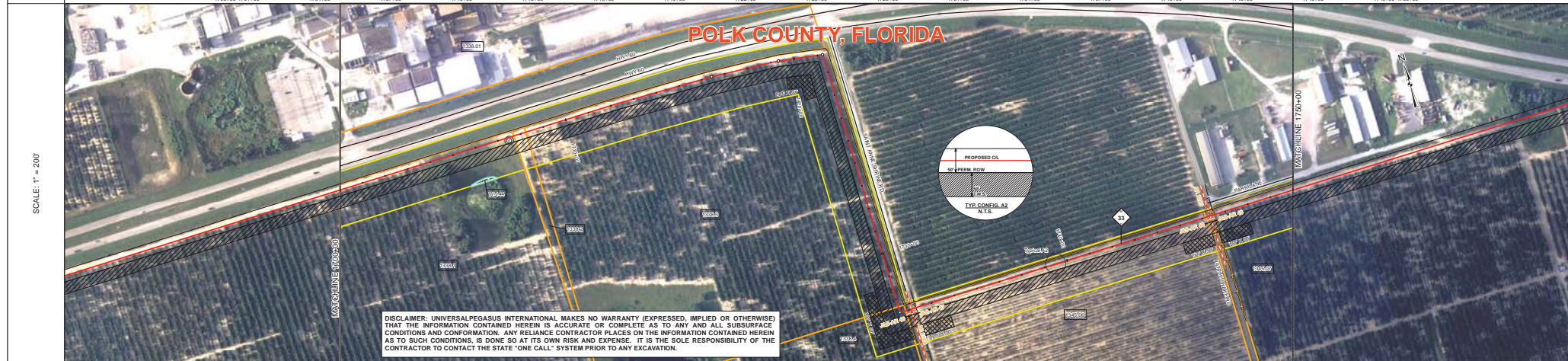
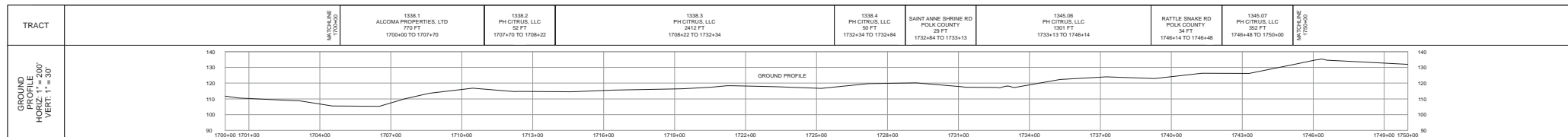
DRAWN BY: MB  
CHECKED BY: MJ  
PROJECT MANAGER: MJ

CHECKED BY: MB  
PROJECT MANAGER: MJ

CONSTRUCTION PERMIT NO.:  
MAINTENANCE OPERATION REGION  
MIN. TEST PRESSURE: 1816 PSI  
DESIGN PRESSURE: 1440 PSI

DATE: 12/15/2015

STL: 1650+00 TO 1700+00  
DISCIPLINE: 03



**DISCLAIMER:** UNIVERSALPEGASUS INTERNATIONAL MAKES NO WARRANTY (EXPRESSED, IMPLIED OR OTHERWISE) THAT THE INFORMATION CONTAINED HEREIN IS ACCURATE OR COMPLETE AS TO ANY AND ALL SUBSURFACE CONDITIONS AND CONFORMATION. ANY RELIANCE CONTRACTOR PLACES ON THE INFORMATION CONTAINED HEREIN AS TO SUCH CONDITIONS, IS DONE SO AT ITS OWN RISK AND EXPENSE. IT IS THE SOLE RESPONSIBILITY OF THE CONTRACTOR TO CONTACT THE STATE "ONE CALL" SYSTEM PRIOR TO ANY EXCAVATION.

SURVEY DATA		STATIONING		MATCHLINE	
1338.1 ALOMA PROPERTIES, LTD 770 FT 1700+00 TO 1707+70		1338.2 PH CITRUS, LLC 42 FT 1707+70 TO 1708+22		1338.4 PH CITRUS, LLC 242.7 FT 1708+22 TO 1732+34	
1338.4 PH CITRUS, LLC 50 FT 1732+34 TO 1732+84		SAINT ANNE SHIRNE RD POLK COUNTY 1732+84 TO 1733+13		1345.06 PH CITRUS, LLC 1301 FT 1733+13 TO 1746+14	
RATTLE SNARE RD POLK COUNTY 34 FT 1746+14 TO 1746+48		1345.07 PH CITRUS, LLC 353 FT 1746+48 TO 1750+00		MATCHLINE 1750+00	

ENGINEERING DATA		MATERIAL		MATCHLINE	
REFERENCE DRAWING		1700+00		1750+00	
CLASSIFICATION		1700+00		1750+00	
MINIMUM DEPTH OF COVER		1700+00		1750+00	
CATHODIC PROTECTION		1700+00		1750+00	
WATERBODIES/WETLAND CROSSINGS		1700+00		1750+00	
WATERBODIES/WETLAND VEGETATION		1700+00		1750+00	
PERMITTING/REGULATORY CONTROL		1700+00		1750+00	
SPECIAL CONDITIONS		1700+00		1750+00	

BILL OF MATERIALS				MISCELLANEOUS MATERIALS				TYPICAL DRAWINGS				GENERAL INFORMATION			
ITEM NO.	QTY	UOM	DESCRIPTION	QTY	UOM	DESCRIPTION	DWG/FIELD BOOK NO.	TITLE	1. THE MINIMUM DEPTH OF COVER FOR THE PROJECT IS 36 INCHES. ADDITIONAL DEPTH OF COVER IS REQUIRED FOR ROAD AND WATERBODY CROSSINGS AND IS TO BE IN ACCORDANCE WITH REFERENCED PERMIT DRAWINGS. SITE SPECIFIC DRAWINGS OR CONSTRUCTION SPECIFICATIONS, WHICHEVER IS MORE STRINGENT.						
4	160	FT	36" O.D. x 0.750 W.T. AP/SL, 3/4" P/B/L, D/SAW, 14-16 MILS FBE & 24-30 MILS ARO	0	EA	SET ON WEIGHTS	21040-510-TYP-20001	CATHODIC PROTECTION STD. SINGLE POINT TEST STATION, TYPE 1	2. THE BOUNDARIES OF ALL WORK AREAS WILL BE CLEARLY MARKED AND ALL WORK SHALL REMAIN WITHIN THE DESIGNATED WORK AREA.						
5	4840	FT	36" O.D. x 0.750 W.T. AP/SL, 3/4" P/B/L, D/SAW, 14-16 MILS FBE	1	EA	PIPELINE MARKERS	21040-510-TYP-20002	CATHODIC PROTECTION STD. FOREIGN PIPELINE CROSSING TEST STATION, TYPE 2	3. THE REQUIRED STATE ONE CALL NOTIFICATION IS THE RESPONSIBILITY OF THE CONSTRUCTION CONTRACTOR.						
				1	EA	CP TEST STATION TYPE 1	21040-510-TYP-20013	CONTINUOUS CONCRETE COATING STANDARD FOR 36"/30" PIPELINE	4. THE CONTRACTOR SHALL ACCESS THE WORK AREA USING ONLY PUBLIC ROADS AND APPROVED ACCESS ROADS.						
				1	EA	CP TEST STATION TYPE 2	21040-510-TYP-20014	CONTINUOUS CONCRETE COATING STANDARD FOR 36"/30" PIPELINE	5. ADDITIONAL WARNING SIGNS MAY BE REQUIRED AS DICTATED BY CONSTRUCTION CONTRACT.						
				1	EA	AERIAL MARKERS	21040-510-TYP-20015	AERIAL MARKER DETAIL	6. MAP PROJECTION: NAD 1983 HARN STATE PLANE FLORIDA EAST ZONE 1801 FEET. VERTICAL DATUM: NAVD 83.						
				0	EA	ANODE BED DEEP WELL	21040-510-TYP-20016	AERIAL MARKER DETAIL	7. INDUCTION BEND QUANTITIES ALONG WITH THEIR DESCRIPTIONS ARE LOCATED ON DRAWING 21040-SSE-FW-00001.						
				0	EA		21040-510-TYP-20017	PIPELINE MARKER ASSEMBLY	8. SEE A/RK DRAWING PACKAGE FOR ANODE BED DEEP WELL.						
				0	EA		21040-510-TYP-20018	PIPELINE MARKER "WARNING" DECAL							

FITTINGS SUMMARY				CONTINUOUS CONCRETE COATING				PIPE COATING DATA				
ITEM NO.	QTY	UOM	DESCRIPTION	QTY	UOM	DESCRIPTION	DESCRIPTION	DESCRIPTION	DESCRIPTION	DESCRIPTION	DESCRIPTION	DESCRIPTION
1	1	EA	36" 3R HORIZONTAL FITTING				PIPE COATING: 14 MIL MINIMUM FBE AND 24 MIL MINIMUM ARO	SURF WELD COATING: 2 PART EPOXY	INTERNAL COATING (YES/NO): NO			

#### LEGEND

- PIPELINE ROUTE
- PERMIT BOW
- ROAD CROSSING
- WATERBODIES
- WETLANDS
- WATERBODIES
- WETLANDS
- WATERBODIES
- WETLANDS
- WATERBODIES
- WETLANDS
- WATERBODIES
- WETLANDS
- WATERBODIES
- WETLANDS

#### REVISIONS

NO.	DESCRIPTION	DATE	REV BY	CHK BY	APP BY
1	IFC (UPDATE ENV. RE-ROUTES, FOOT-PRINT)	2016-04-08	MB	MJ	RG
2	ISSUED FOR CONSTRUCTION	2015-12-15	MB	MJ	RG

#### APPROVALS

NO.	DESCRIPTION	DATE	REV BY	CHK BY	APP BY
1	APPROVAL				

SCALE: 1" = 200'

FLORIDA SOUTHEAST CONNECTION PROJECT

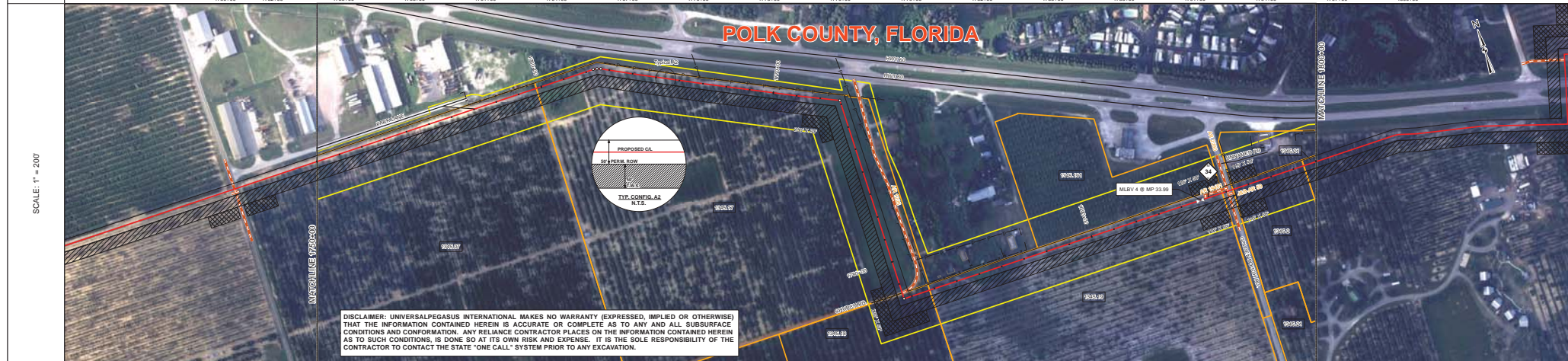
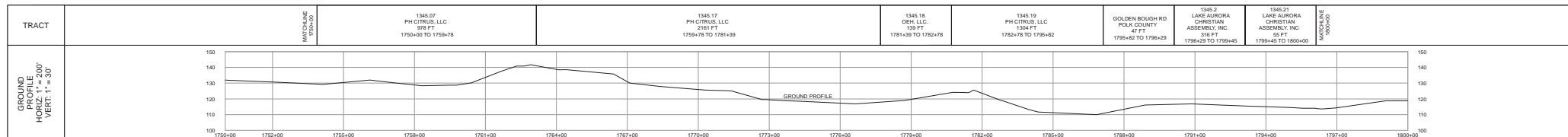
21040-510-ALS-00039

FLORIDA SOUTHEAST CONNECTION ALIGNMENT SHEET POLK COUNTY, FLORIDA

SCALE: 1" = 200'      21040-510-ALS-00039      REV. 1

DISCIPLINE: 03

SHEET 39



SURVEY DATA		STATIONING	
MATCHLINE 1750+00	1750+00	MATCHLINE 1800+00	1800+00

ENGINEERING DATA		MATERIAL	
REFERENCE DRAWING		MATCHLINE 1750+00	MATCHLINE 1800+00
CLASS LOCATION	Class III		
MINIMUM DEPTH OF COVER	3'		
INSTALLATION CATHODIC PROTECTION	0		
INTERSECTION WETLAND CROSSING			
INTERSECTION WETLAND AVOIDANCE			

ENVIRONMENTAL DATA		STATIONS	
PERMIT/REGULATORY CONTROL	EROSION CONTROL CODE PAVING BEHAVIOR CODE TOPSOIL SALVAGE THREATENED AND ENDANGERED SPECIES	MATCHLINE 1750+00	MATCHLINE 1800+00
SPECIAL CONDITIONS	CONSTRAINT 1 CONSTRAINT 2 CONSTRAINT 3 CONSTRAINT 4		

BILL OF MATERIALS				MISCELLANEOUS MATERIALS				TYPICAL DRAWINGS				GENERAL INFORMATION				
ITEM NO.	QTY	UOM	DESCRIPTION	QTY	UOM	DESCRIPTION	DWG/FIELD BOOK NO.	TITLE	1. THE MINIMUM DEPTH OF COVER FOR THE PROJECT IS 36 INCHES. ADDITIONAL DEPTH OF COVER IS REQUIRED FOR ROAD AND WATERBODY CROSSINGS, AND IS TO BE IN ACCORDANCE WITH REFERENCED PERMIT DRAWINGS, SITE SPECIFIC DRAWINGS, OR CONSTRUCTION SPECIFICATIONS, WHICHEVER IS MORE STRINGENT.	2. THE BOUNDARIES OF ALL WORK AREAS WILL BE CLEARLY MARKED AND ALL WORK SHALL REMAIN WITHIN THE DESIGNATED WORK AREA.	3. THE REQUIRED STATE ONE CALL NOTIFICATION IS THE RESPONSIBILITY OF THE CONSTRUCTION CONTRACTOR.	4. THE CONTRACTOR SHALL ACCESS THE WORK AREA USING ONLY PUBLIC ROADS AND APPROVED ACCESS ROADS.	5. ADDITIONAL WARNING SIGNS MAY BE REQUIRED AS DICTATED BY CONSTRUCTION CONTRACT.	6. MAP PROJECTION: NAD 1983 HAIN STATE PLANE FLORIDA EAST FIPS 0801 FEET. VERTICAL DATUM: NAVD 83.	7. INDUCTION BEND QUANTITIES ALONG WITH THEIR DESCRIPTIONS ARE LOCATED ON DRAWING 21040-SSE-FW-00001.	8. 'A' = SEE A/RK DRAWING PACKAGE FOR ANODE BED DEEP WELL.

FITTINGS SUMMARY				CONTINUOUS CONCRETE COATING			
ITEM NO.	QTY	UOM	DESCRIPTION	QTY	UOM	DESCRIPTION	
1	EA		30" 3R HORIZONTAL FITTING				

PIPE ASSEMBLIES			
QTY	UOM	DESCRIPTION	
1	EA	MLBY 4 (201)	

PIPE COATING DATA			
PIPE COATING:	14 MIL MINIMUM FBE AND 24 MIL MINIMUM ARO		
SMITH WELD COATING:	2 PART EPOXY		
INTERNAL COATING (YES/NO):	NO		

LEGEND			
PIPELINE ROUTE	PIPELINE LINE	FORWARD WETLAND	WATERBODY
EDGE PIPE	LINE PIPE	NON-FORWARDED WETLAND	PAVED SURFACE
CONCRETE PIPE	STEEL PIPE	FORESTED WETLAND	ROADWAY
CONCRETE PIPE	STEEL PIPE	WATERWAY	ROADWAY
CONCRETE PIPE	STEEL PIPE	WATERWAY	ROADWAY

REVISIONS			
NO.	DESCRIPTION	DATE	REV BY
1	IFC (UPDATE ENV. RE-ROUTES, FOOT-PRINT)	2016-04-08	MB MJ
2	ISSUED FOR CONSTRUCTION	2015-12-15	MB MJ

APPROVALS			
NO.	DESCRIPTION	DATE	REV BY
1	APPROVAL		COMPANY