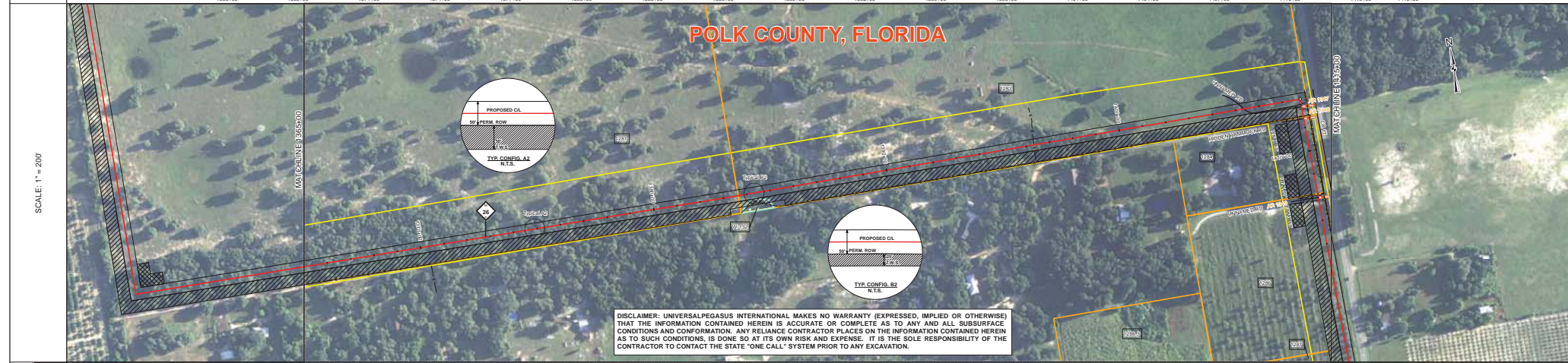
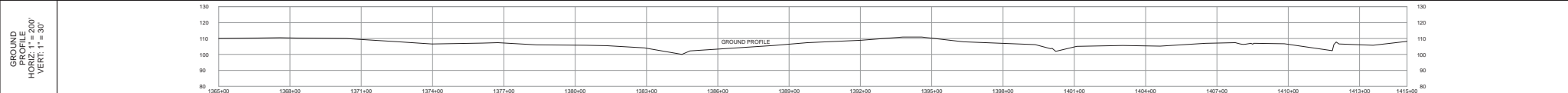


TRACT	1281 ALCOMA PROPERTIES, LTD. 1982 FT 1385+62 TO 1383+62	1283 ALCOMA PROPERTIES, LTD. 2493 FT 1383+62 TO 1408+52	1284 JENNIFER M. BRANTLEY 533 FT 1408+62 TO 1411+85	1286 DOREEN H. KEEN TRUST 315 FT 1411+86 TO 1415+00	TRACT 1288 MATCHLINE 1415+00
-------	--	--	--	--	---------------------------------------



DISCLAIMER: UNIVERSALPEGASUS INTERNATIONAL MAKES NO WARRANTY (EXPRESSED, IMPLIED OR OTHERWISE) THAT THE INFORMATION CONTAINED HEREIN IS ACCURATE OR COMPLETE AS TO ANY AND ALL SUBSURFACE CONDITIONS AND CONFORMATION. ANY RELIANCE CONTRACTOR PLACES ON THE INFORMATION CONTAINED HEREIN AS TO SUCH CONDITIONS, IS DONE SO AT ITS OWN RISK AND EXPENSE. IT IS THE SOLE RESPONSIBILITY OF THE CONTRACTOR TO CONTACT THE STATE "ONE CALL" SYSTEM PRIOR TO ANY EXCAVATION.

SURVEY DATA	STATIONING	1365+00 to 1415+00												
ENGINEERING DATA	MATERIAL	1365+00 to 1415+00												
ENVIRONMENTAL DATA	STATIONS	1365+00 to 1415+00												
<table border="1"> <thead> <tr> <th>REFERENCE DRAWING</th> <th>CLASS LOCATION</th> <th>NUMBER DEPTH OF COVERS</th> <th>IN-BIT LOCATION CATHODIC PROTECTION</th> </tr> </thead> <tbody> <tr> <td> </td> <td> </td> <td> </td> <td> </td> </tr> </tbody> </table>			REFERENCE DRAWING	CLASS LOCATION	NUMBER DEPTH OF COVERS	IN-BIT LOCATION CATHODIC PROTECTION								
REFERENCE DRAWING	CLASS LOCATION	NUMBER DEPTH OF COVERS	IN-BIT LOCATION CATHODIC PROTECTION											
<table border="1"> <thead> <tr> <th>INTERSECTION WETLAND CROSSINGS</th> <th>INTERSECTION WETLAND AVOIDANCE</th> </tr> </thead> <tbody> <tr> <td> </td> <td> </td> </tr> </tbody> </table>			INTERSECTION WETLAND CROSSINGS	INTERSECTION WETLAND AVOIDANCE										
INTERSECTION WETLAND CROSSINGS	INTERSECTION WETLAND AVOIDANCE													
<table border="1"> <thead> <tr> <th>PERMITS AND REGULATIONS</th> <th>ENVIRONMENTAL RESTRICTIONS</th> <th>SPECIAL CONDITIONS</th> </tr> </thead> <tbody> <tr> <td> <table border="1"> <tr> <th>PERMIT</th> <th>REGULATION</th> </tr> <tr> <td> </td> <td> </td> </tr> </table> </td> <td> <table border="1"> <tr> <th>CONSTRAINT #</th> </tr> <tr> <td> </td> </tr> </table> </td> <td> </td> </tr> </tbody> </table>			PERMITS AND REGULATIONS	ENVIRONMENTAL RESTRICTIONS	SPECIAL CONDITIONS	<table border="1"> <tr> <th>PERMIT</th> <th>REGULATION</th> </tr> <tr> <td> </td> <td> </td> </tr> </table>	PERMIT	REGULATION			<table border="1"> <tr> <th>CONSTRAINT #</th> </tr> <tr> <td> </td> </tr> </table>	CONSTRAINT #		
PERMITS AND REGULATIONS	ENVIRONMENTAL RESTRICTIONS	SPECIAL CONDITIONS												
<table border="1"> <tr> <th>PERMIT</th> <th>REGULATION</th> </tr> <tr> <td> </td> <td> </td> </tr> </table>	PERMIT	REGULATION			<table border="1"> <tr> <th>CONSTRAINT #</th> </tr> <tr> <td> </td> </tr> </table>	CONSTRAINT #								
PERMIT	REGULATION													
CONSTRAINT #														

BILL OF MATERIALS			MISCELLANEOUS MATERIALS			TYPICAL DRAWINGS		GENERAL INFORMATION			
ITEM NO.	QTY	UOM	RECON. MATERIAL NUMBER	DESCRIPTION	QTY	UOM	RECON. MATERIAL NUMBER	DESCRIPTION	DWG/FIELD BOOK NO.	TITLE	
1	80	FT		36" O.D. x 0.750" W.T., API 5L, X70, FR12, DSAW, 14-16 MILS FBE & 24-30 MILS ARO	0	EA		SET ON WEIGHTS	21040-510-TYP-2001	CATHODIC PROTECTION STD. SINGLE POINT TEST STATION, TYPE 1	
2	4920	FT		36" O.D. x 0.625" W.T., API 5L, X70, FR12, DSAW, 14-16 MILS FBE	3	EA		PIPELINE MARKERS	21040-510-TYP-2002	CATHODIC PROTECTION STD. FOREIGN PIPELINE CROSSING TEST STATION, TYPE 2	
					0	EA		WARNING SIGNS	21040-510-TYP-2003	CATHODIC PROTECTION STD. TYPICAL OPEN CUT / BORE	
					0	EA		CP TEST STATION TYPE 1	21040-510-TYP-2012	CONTINUOUS CONCRETE COATING STANDARD FOR 36"/30" PIPELINE	
					0	EA		CP TEST STATION TYPE 2	21040-510-TYP-2013	AERIAL MARKER DETAIL	
					0	EA		AERIAL MARKERS	21040-510-TYP-2014	PIPELINE MARKER DETAIL	
					0	EA		ANODE BED DEEP WELL	21040-510-TYP-2015	PIPELINE MARKER "WARNING" DETAIL	
FITTINGS SUMMARY			CONTINUOUS CONCRETE COATING			PIPE COATING DATA		SPECIAL NOTES			
1	1	EA		90° 3R HORIZONTAL FITTING							<p>1. THE MINIMUM DEPTH OF COVER FOR THE PROJECT IS 36 INCHES. ADDITIONAL DEPTH OF COVER IS REQUIRED FOR ROAD AND WATERBODY CROSSINGS, AND IS TO BE IN ACCORDANCE WITH REFERENCED PERMIT DRAWINGS, SITE SPECIFIC DRAWINGS OR CONSTRUCTION SPECIFICATIONS, WHICHEVER IS MORE STRINGENT.</p> <p>2. THE BOUNDARIES OF ALL WORK AREAS WILL BE CLEARLY MARKED AND ALL WORK SHALL REMAIN WITHIN THE DESIGNATED WORK AREA.</p> <p>3. THE REQUIRED STATE ONE CALL NOTIFICATION IS THE RESPONSIBILITY OF THE CONSTRUCTION CONTRACTOR.</p> <p>4. THE CONTRACTOR SHALL ACCESS THE WORK AREA USING ONLY PUBLIC ROADS AND APPROVED ACCESS ROADS.</p> <p>5. ADDITIONAL WARNING SIGNS MAY BE REQUIRED AS DICTATED BY CONSTRUCTION CONTRACT.</p> <p>6. MAP PROJECTION: NAD 1983 HARN STATE PLANE FLORIDA, EAST PART 6081 FEET, VERTICAL DATUM: NAVD 83.</p>
											<p>1. INDUCTION BEND QUANTITIES ALONG WITH THEIR DESCRIPTIONS ARE LOCATED ON DRAWING 21040-555-BW-00001.</p> <p>2. ∅ : SEE ARIE DRAWING PACKAGE FOR ANODE BED DEEP WELL.</p>

LEGEND				REVISIONS				APPROVALS				
—	PIPELINE ROUTE	---	FENCE	NO.	DESCRIPTION	DATE	REV. BY	CHK. BY	APP. BY	DRAWN BY	MB	CONSTRUCTION PERMIT NO.
—	ROAD	-	UTILITY	1	IFC UPDATE ENV. RE. ROUTES, FOOTPRINT	2016-04-08	MB	MJ	RG	CHECKED BY:	MJ	MAINTENANCE OPERATION REGION
—	WATERWAY	-	ROADWAY	0	ISSUED FOR CONSTRUCTION	2015-12-15	MB	MJ	RG	PROJECT MANAGER:	RG	MIN. TEST PRESSURE 1816 PSI
—	PROPERTY LINE	-	PIPELINE							PROJECT DEFY. NO.		DESIGN PRESSURE 1440 PSI
—	ROW	-	CONCRETE									
—	ROW	-	STEEL									
—	ROW	-	PIPELINE									
—	ROW	-	CONCRETE									
—	ROW	-	STEEL									
—	ROW	-	PIPELINE									
—	ROW	-	CONCRETE									
—	ROW	-	STEEL									

FLORIDA SOUTHEAST CONNECTION PROJECT

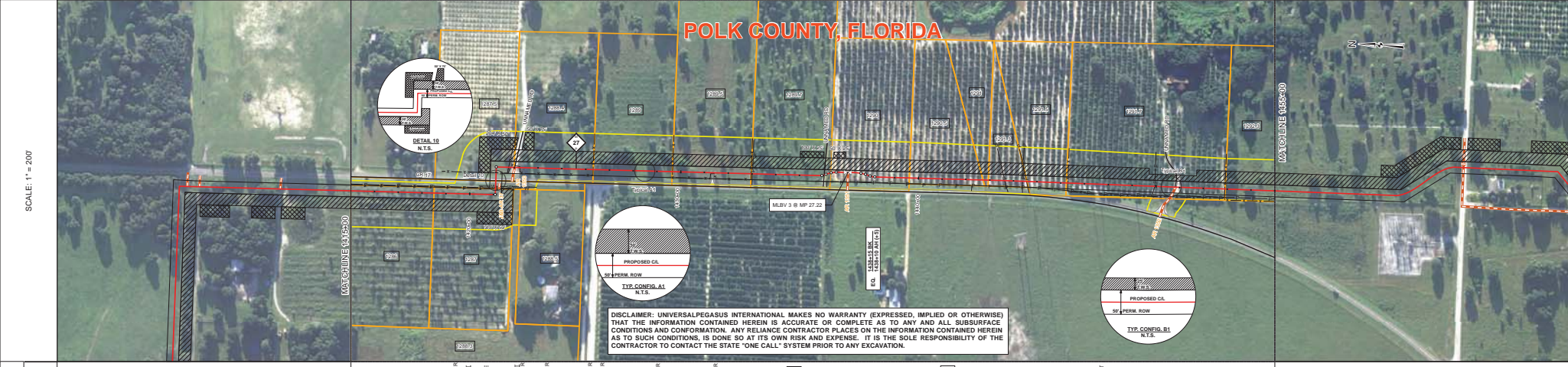
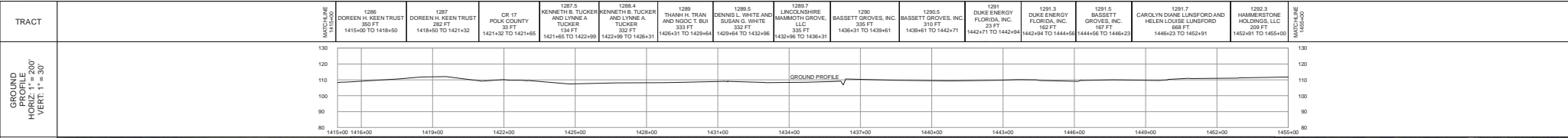
ALIGNMENT SHEET

POLK COUNTY, FLORIDA

SCALE: 1" = 200'

21040-510-ALS-00031

REV. 1



STATIONING	MATERIAL	CLASSIFICATION	STATIONS
1415+00	1415+00	21040-440-PMW-00028	1421+15, 1422+15
1432+96	1432+96	21040-555-RVW-00010	1437+40
1455+00	1455+00		1450+00, 1450+06

BILL OF MATERIALS		MISCELLANEOUS MATERIALS		TYPICAL DRAWINGS		GENERAL INFORMATION	
4	100 FT	EA	36" O.D. x 0.750" WT. API 5L X70, PSL2, DSAW, 14-15 MLS FREE & 24-30 MLS ARO	21040-510-TYP-20001	CATHODIC PROTECTION STD. SINGLE POINT TEST STATION, TYPE 1	1. THE MINIMUM DEPTH OF COVER FOR THE PROJECT IS 36 INCHES. ADDITIONAL DEPTH OF COVER IS REQUIRED FOR ROAD AND WATERBODY CROSSINGS, AND IS TO BE IN ACCORDANCE WITH REFERENCED PERMIT DRAWINGS. SITE SPECIFIC DRAWINGS OR CONSTRUCTION SPECIFICATIONS, WHICHEVER IS MORE STRINGENT.	THIS BAND NOT UTILIZED
5	300 FT	EA	36" O.D. x 0.625" WT. API 5L X70, PSL2, DSAW, 14-15 MLS FREE	21040-510-TYP-20002	CATHODIC PROTECTION STD. FOREIGN PIPELINE CROSSING TEST STATION, TYPE 2	2. THE BOUNDARIES OF ALL WORK AREAS WILL BE CLEARLY MARKED AND ALL WORK SHALL REMAIN WITHIN THE DESIGNATED WORK AREA.	THIS BAND NOT UTILIZED
6	40 FT	EA	36" O.D. x 0.750" WT. API 5L X70, PSL2, DSAW, 14-15 MLS FREE	21040-510-TYP-20008	CONTINUOUS CONCRETE COATING STANDARD FOR 36" / 30" PIPELINE	3. THE REQUIRED STATE ONE CALL NOTIFICATION IS THE RESPONSIBILITY OF THE CONSTRUCTION CONTRACTOR.	THIS BAND NOT UTILIZED
FITTINGS SUMMARY		CONTINUOUS CONCRETE COATING		GENERAL INFORMATION		LEGEND	
2	EA		36" HORIZONTAL FITTINGS				
PIPE ASSEMBLIES		PIPE COATING DATA		SPECIAL NOTES		REVISIONS	
1	EA		INTERNAL COATING (YES/NO): NO				

APPROVALS

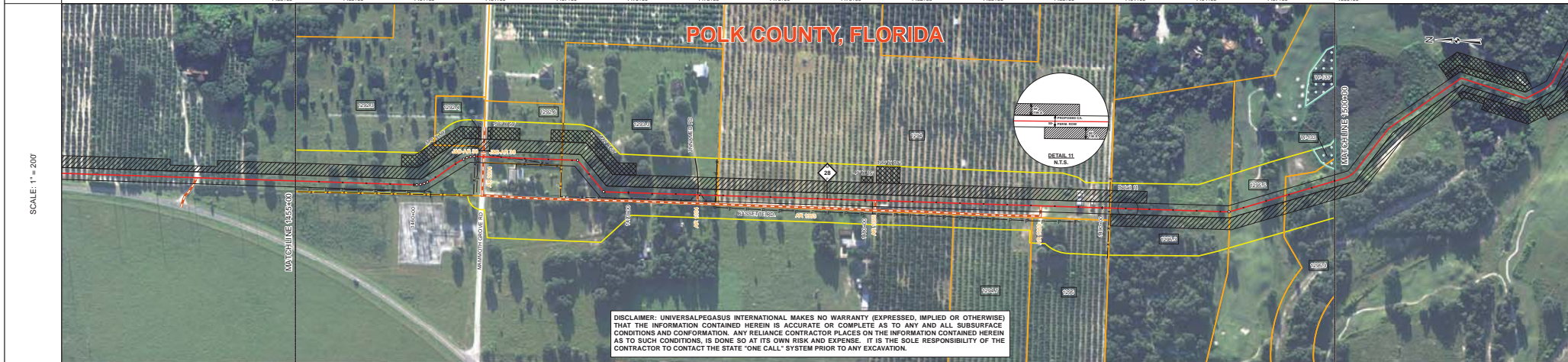
NO.	DESCRIPTION	DATE	REV. BY	APP. BY
1	IFC UPDATE ENV. REV. ROUTES, FOOTPRINT	2016-04-08	MB	MJ
2	ISSUED FOR CONSTRUCTION	2015-12-15	MB	MJ

UNIVERSALPEGASUS INTERNATIONAL
A Subsidiary of Manpowergroup Inc.

FLORIDA SOUTHEAST CONNECTION
ALIGNMENT SHEET
POLK COUNTY, FLORIDA

SCALE: 1" = 200' 21040-510-ALS-00032 REV. 1

TRACT	1292.3 HAMMERSTONE HOLDINGS, LLC 855 FT 1455+00 TO 1483+25	1292.5 CORRETT C. WATSON, JR. AND CASSANDRE D. WATSON 330 FT 1463+42 TO 1466+55	1293.3 LINDA M. COCHRAN 721 FT 1486+65 TO 1473+76	1294 MARY S. WYFOSDICK 1658 FT 1473+76 TO 1480+34	1295.3 CHAWWOOD LAND COMPANY, LLC 505 FT 1480+34 TO 1495+39	1295.5 MILMACK, INC. 343 FT 1495+39 TO 1497+82	1295.3 CHAWWOOD LAND COMPANY, L.L.P. 218 FT 1497+82 TO 1500+00
-------	---	--	--	--	---	---	---



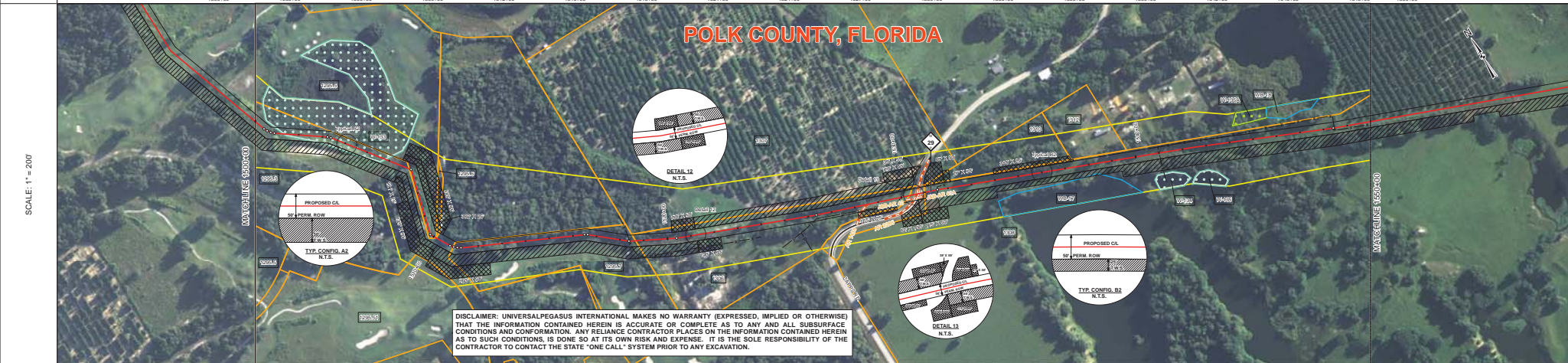
DISCLAIMER: UNIVERSALPEGASUS INTERNATIONAL MAKES NO WARRANTY (EXPRESSED, IMPLIED OR OTHERWISE) THAT THE INFORMATION CONTAINED HEREIN IS ACCURATE OR COMPLETE AS TO ANY AND ALL SUBSURFACE CONDITIONS AND CONFORMATION. ANY RELIANCE CONTRACTOR PLACES ON THE INFORMATION CONTAINED HEREIN AS TO SUCH CONDITIONS, IS DONE SO AT ITS OWN RISK AND EXPENSE. IT IS THE SOLE RESPONSIBILITY OF THE CONTRACTOR TO CONTACT THE STATE "ONE CALL" SYSTEM PRIOR TO ANY EXCAVATION.

SURVEY DATA	STATIONING		MATCHLINE 1455+00	MATCHLINE 1500+00	
	MATERIAL		MATCHLINE 1455+00	MATCHLINE 1500+00	
ENGINEERING DATA	REFERENCE DRAWING	21040-443-PMW-00027	Class II	1472+13	Class III
	CLASS LOCATION	3	1	5	3
ENVIRONMENTAL DATA	STATIONS		MATCHLINE 1455+00	MATCHLINE 1500+00	
	PERMANENT EROSION CONTROL	EROSION CONTROL CODE BULKY DEBRIS CODE SOIL SALVAGE	1482+044 1485+444	1484+454 1486+403	

BILL OF MATERIALS		MISCELLANEOUS MATERIALS		TYPICAL DRAWINGS		GENERAL INFORMATION		LEGEND		REVISIONS		APPROVALS								
ITEM NO.	QTY	LOC	REQ N MATERIAL NUMBER	DESCRIPTION	QTY	LOC	REQ N MATERIAL NUMBER	DESCRIPTION	DWG/FIELD BOOK NO.	TITLE	NO.	DESCRIPTION	DATE	REV BY	CHK BY	APP BY	DRAWN BY:	MB	CONSTRUCTION PERMIT NO.	
1	60	FT		36" O.D. x 0.750" W.T. API 5L X70, PSL2, DSAW, 14-16 MILS FBE & 24-30 MILS ARO	0	EA		SET ON WEIGHTS	21040-510-TYP-20001	CATHODIC PROTECTION STD. SINGLE POINT TEST STATION, TYPE 1	1	IFC (UPDATE ENV. RE-ROUTES, FOOT-PRINT)	2016-04-08	MB	MJ	RG	MB	MJ	MAINTENANCE OPERATION REGION	
2	1603	FT		36" O.D. x 0.625" W.T. API 5L X70, PSL2, DSAW, 14-16 MILS FBE	7	EA		PIPELINE MARKERS	21040-510-TYP-20002	CATHODIC PROTECTION STD. FOREIGN PIPELINE CROSSING TEST STATION, TYPE 2	2	ISSUED FOR CONSTRUCTION	2015-12-15	MB	MJ	RG	MB	MJ	MIN. TEST PRESSURE 1816 PSF	
3	3767	FT		36" O.D. x 0.750" W.T. API 5L X70, PSL2, DSAW, 14-16 MILS FBE	2	EA		WARNING SIGNS	21040-510-TYP-20003	CP TEST STATION TYPE 1	3								DESIGN PRESSURE 1440 PSF	
FITTINGS SUMMARY		CONTINUOUS CONCRETE COATING		PIPE COATING DATA		SPECIAL NOTES		ENVIRONMENTAL DATA		REVISIONS		APPROVALS								
ITEM NO.	QTY	LOC	REQ N MATERIAL NUMBER	DESCRIPTION	QTY	LOC	REQ N MATERIAL NUMBER	DESCRIPTION	21040-510-TYP-20008	CONTINUOUS CONCRETE COATING STANDARD FOR 36"/30" PIPELINE	21040-510-TYP-20012	21040-510-TYP-20013	21040-510-TYP-20014	21040-510-TYP-20015	21040-510-TYP-20016	21040-510-TYP-20017	21040-510-TYP-20018	21040-510-TYP-20019	21040-510-TYP-20020	21040-510-TYP-20021

FLORIDA SOUTHEAST CONNECTION PROJECT
 STA. 1455+00 TO 1500+00
FLORIDA SOUTHEAST CONNECTION ALIGNMENT SHEET
POLK COUNTY, FLORIDA
 SCALE: 1" = 200' 21040-510-ALS-00033 REV. 1
 SHEET 33

TRACT	MATCHLINE 1500+00	1295.3 OAKWOOD LAND COMPANY, L.L.P. 592 FT 1500+00 TO 1506+89	1295.7 OAKWOOD LAND COMPANY, L.L.P. 322 FT 1506+89 TO 1510+11	1295.3 OAKWOOD LAND COMPANY, L.L.P. 82 FT 1510+11 TO 1510+93	1295.7 OAKWOOD LAND COMPANY, L.L.P. 772 FT 1510+93 TO 1518+65	1306 E. R. JAHNA INDUSTRIES, INC. 1107 FT 1518+65 TO 1530+32	CLIFFS RD POLK COUNTY 87 FT 1530+32 TO 1530+89	1308 E. ELIAS JAHNA 1501 FT 1530+89 TO 1550+00	MATCHLINE 1550+00
-------	-------------------	---	---	--	---	--	--	--	-------------------



SURVEY DATA	STATIONING	MATERIAL	STATIONS
MATCHLINE 1500+00	MATCHLINE 1500+00	MATCHLINE 1500+00	MATCHLINE 1500+00
1500+00 TO 1506+89	1500+00 TO 1506+89	1500+00 TO 1506+89	1500+00 TO 1506+89
1506+89 TO 1510+11	1506+89 TO 1510+11	1506+89 TO 1510+11	1506+89 TO 1510+11
1510+11 TO 1510+93	1510+11 TO 1510+93	1510+11 TO 1510+93	1510+11 TO 1510+93
1510+93 TO 1518+65	1510+93 TO 1518+65	1510+93 TO 1518+65	1510+93 TO 1518+65
1518+65 TO 1530+32	1518+65 TO 1530+32	1518+65 TO 1530+32	1518+65 TO 1530+32
1530+32 TO 1530+89	1530+32 TO 1530+89	1530+32 TO 1530+89	1530+32 TO 1530+89
1530+89 TO 1550+00	1530+89 TO 1550+00	1530+89 TO 1550+00	1530+89 TO 1550+00

BILL OF MATERIALS		MISCELLANEOUS MATERIALS		TYPICAL DRAWINGS		GENERAL INFORMATION		LEGEND		REVISIONS		APPROVALS																									
ITEM NO.	QTY	LOM	REYN.	MATERIAL NUMBER	DESCRIPTION	DWG/FIELD BOOK NO.	TITLE	1. THE MINIMUM DEPTH OF COVER FOR THE PROJECT IS 36 INCHES. ADDITIONAL DEPTH OF COVER IS REQUIRED FOR ROAD AND WATERBODY CROSSINGS, AND IS TO BE IN ACCORDANCE WITH REFERENCED PERMIT DRAWINGS, SITE SPECIFIC DRAWINGS, OR CONSTRUCTION SPECIFICATIONS, WHICHEVER IS MORE STRINGENT.		<table border="1"> <tr> <th>NO.</th> <th>DESCRIPTION</th> <th>DATE</th> <th>REV. BY</th> <th>CHK. BY</th> <th>APP. BY</th> </tr> <tr> <td>1</td> <td>IFC UPDATE ENV. RE. ROUTES, FOOT-PRINT</td> <td>2016-04-08</td> <td>MB</td> <td>MJ</td> <td>RG</td> </tr> <tr> <td>2</td> <td>ISSUED FOR CONSTRUCTION</td> <td>2015-12-15</td> <td>MB</td> <td>MJ</td> <td>RG</td> </tr> </table>	NO.	DESCRIPTION	DATE	REV. BY	CHK. BY	APP. BY	1	IFC UPDATE ENV. RE. ROUTES, FOOT-PRINT	2016-04-08	MB	MJ	RG	2	ISSUED FOR CONSTRUCTION	2015-12-15	MB	MJ	RG	<table border="1"> <tr> <td>CONSTRUCTION</td> <td>PERMIT NO.</td> </tr> <tr> <td>MAINTENANCE OPERATION REGION</td> <td></td> </tr> <tr> <td>MIN. TEST PRESSURE</td> <td>1816 PSF</td> </tr> <tr> <td>DESIGN PRESSURE</td> <td>1440 PSF</td> </tr> </table>	CONSTRUCTION	PERMIT NO.	MAINTENANCE OPERATION REGION		MIN. TEST PRESSURE	1816 PSF	DESIGN PRESSURE	1440 PSF
NO.	DESCRIPTION	DATE	REV. BY	CHK. BY	APP. BY																																
1	IFC UPDATE ENV. RE. ROUTES, FOOT-PRINT	2016-04-08	MB	MJ	RG																																
2	ISSUED FOR CONSTRUCTION	2015-12-15	MB	MJ	RG																																
CONSTRUCTION	PERMIT NO.																																				
MAINTENANCE OPERATION REGION																																					
MIN. TEST PRESSURE	1816 PSF																																				
DESIGN PRESSURE	1440 PSF																																				
FITTINGS SUMMARY		CONTINUOUS CONCRETE COATING		PIPE COATING DATA		SPECIAL NOTES		ENVIRONMENTAL		LAND		FLORIDA SOUTHEAST CONNECTION PROJECT																									
ITEM NO.	QTY	LOM	REYN.	MATERIAL NUMBER	DESCRIPTION	DWG/FIELD BOOK NO.	TITLE	3. THE REQUIRED STATE ONE CALL NOTIFICATION IS THE RESPONSIBILITY OF THE CONSTRUCTION CONTRACTOR.		<table border="1"> <tr> <td>ENVIRONMENTAL</td> <td></td> </tr> <tr> <td>LAND</td> <td></td> </tr> </table>	ENVIRONMENTAL		LAND		<table border="1"> <tr> <td>UNIVERSALPEGASUS INTERNATIONAL</td> <td></td> </tr> <tr> <td>FLORIDA SOUTHEAST CONNECTION</td> <td></td> </tr> </table>	UNIVERSALPEGASUS INTERNATIONAL		FLORIDA SOUTHEAST CONNECTION																			
ENVIRONMENTAL																																					
LAND																																					
UNIVERSALPEGASUS INTERNATIONAL																																					
FLORIDA SOUTHEAST CONNECTION																																					
PIPE ASSEMBLIES		PIPE COATING DATA		SPECIAL NOTES		ENVIRONMENTAL		LAND		FLORIDA SOUTHEAST CONNECTION PROJECT		ALIGNMENT SHEET POLK COUNTY, FLORIDA																									
QTY	LOM	DESCRIPTION		PIPE COATING DATA		SPECIAL NOTES		ENVIRONMENTAL		LAND		REV. 1																									

FLORIDA SOUTHEAST CONNECTION PROJECT

FLORIDA SOUTHEAST CONNECTION
ALIGNMENT SHEET
POLK COUNTY, FLORIDA

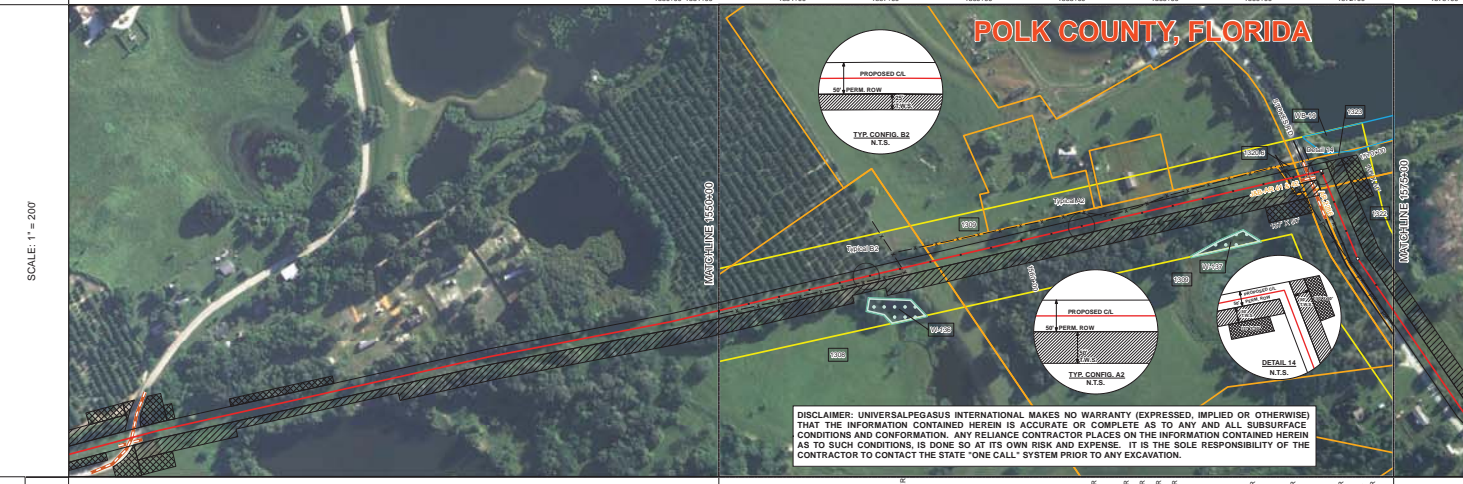
SCALE: 1" = 200'

21040-510-ALS-00034

REV. 1

SHEET 34

TRACT	1308 E. ELIAS JARNA 711 FT 1550+00 TO 1557+11	1309 GRETCHEM N. JARNA 1163 FT 1557+11 TO 1568+72	1320.6 THREE OEE DEE COMPANY 1568+72 TO 1569+17	STONES RD POLK COUNTY 33 FT 1569+17 TO 1569+49	1323 FLORIDA ROCK INDUSTRIES, INC. 39 FT 1569+49 TO 1570+47	1322 FLORIDA ROCK INDUSTRIES, INC. 263 FT 1570+47 TO 1575+00
-------	--	--	--	---	---	--



SURVEY DATA	STATIONING	MATCHLINE 1550+00	MATCHLINE 1575+00
-------------	------------	-------------------	-------------------

ENGINEERING DATA	MATERIAL	MATCHLINE 1550+00	MATCHLINE 1575+00
REFERENCE DRAWING	CLASSIFICATION	1557+40	1569+40
CLASSIFICATION	CLASSIFICATION	Class I	Class II

ENVIRONMENTAL DATA	STATIONS	MATCHLINE 1550+00	MATCHLINE 1575+00
PERMANENT SIGN CONTROL	ENVIRONMENTAL CONTROL	1550+00	1575+00

ITEM NO.	QTY	UOM	RECN NUMBER	MATERIAL NUMBER	DESCRIPTION	QTY	UOM	RECN NUMBER	MATERIAL NUMBER	DESCRIPTION
4	120	FT		36" O.D. x 0.750" W.T., API 5L X70, PSL2, DRAW, 14-16 MILS FBE & 24-30 MILS ARO	36" O.D. x 0.750" W.T., API 5L X70, PSL2, DRAW, 14-16 MILS FBE & 24-30 MILS ARO	0	EA			SET ON WEIGHTS
5	140	FT		36" O.D. x 0.920" W.T., API 5L X70, PSL2, DRAW, 14-16 MILS FBE	36" O.D. x 0.920" W.T., API 5L X70, PSL2, DRAW, 14-16 MILS FBE	2	EA			PIPELINE MARKERS
6	1640	FT		36" O.D. x 0.750" W.T., API 5L X70, PSL2, DRAW, 14-16 MILS FBE	36" O.D. x 0.750" W.T., API 5L X70, PSL2, DRAW, 14-16 MILS FBE	3	EA			WARNING SIGNS
7						0	EA			CP TEST STATION TYPE 1
8						0	EA			CP TEST STATION TYPE 2
9						0	EA			AERIAL MARKERS
10						0	EA			ANODE BED DEEP WELL

FITTINGS SUMMARY		CONTINUOUS CONCRETE COATING			
ITEM NO.	QTY	UOM	RECN NUMBER	MATERIAL NUMBER	DESCRIPTION
11					CONTINUOUS CONCRETE COATING STANDARD FOR 36" / 30" PIPELINE
12					AERIAL MARKER INSTALLATION DETAIL
13					TYPICAL SADDLE BAG WEIGHTS
14					WARNING SIGN DETAIL
15					AERIAL MARKER DETAIL
16					TYPICAL PIPELINE MARKER ASSEMBLY
17					PIPELINE MARKER "WARNING" DETAIL

PIPE COATING DATA	
PIPE COATING:	14 MIL MINIMUM FBE AND 24 MIL MINIMUM ARO
SURFACE COATING:	2 PART EPOXY
INTERNAL COATING (YES/NO):	NO

BILL OF MATERIALS		MISCELLANEOUS MATERIALS		TYPICAL DRAWINGS		GENERAL INFORMATION	
1	MINIMUM DEPTH OF COVER FOR THE PROJECT IS 36 INCHES.	1	MINIMUM DEPTH OF COVER FOR THE PROJECT IS 36 INCHES.	1	MINIMUM DEPTH OF COVER FOR THE PROJECT IS 36 INCHES.	1	MINIMUM DEPTH OF COVER FOR THE PROJECT IS 36 INCHES.

REVISIONS				APPROVALS			
NO.	DESCRIPTION	DATE	REV BY	CHK BY	APP BY	NO.	DESCRIPTION
1	IFC UPDATE ENV. RE ROUTES, FOOTPRINT	2016-04-08	MJ	MJ	RG	1	MAINTENANCE OPERATION REGION
2	ISSUED FOR CONSTRUCTION	2015-12-15	MB	MJ	RG	2	MM. TEST PRESSURE 1816 PSI
3						3	DESIGN PRESSURE 1440 PSI

UNIVERSAL PEGASUS INTERNATIONAL A Subsidiary of Manpowergroup Inc.	FLORIDA SOUTHEAST CONNECTION ALIGNMENT SHEET POLK COUNTY, FLORIDA	SCALE: 1" = 200'	21040-510-ALS-00035	REV. 1
---	---	------------------	---------------------	--------