

SURVEY DATA	STATIONING	MATCHLINE 1160+00	MATCHLINE 1190+00	MATCHLINE 1160+00	MATCHLINE 1190+00	MATCHLINE 1160+00	MATCHLINE 1190+00	MATCHLINE 1160+00	MATCHLINE 1190+00
ENGINEERING DATA	MATERIAL								
ENVIRONMENTAL DATA	STATIONS	<p>21040-440-PMW-00022</p> <p>Class B</p> <p>THIS BAND NOT UTILIZED</p> <p>THIS BAND NOT UTILIZED</p> <p>THIS BAND NOT UTILIZED</p> <p>THIS BAND NOT UTILIZED</p>							

BILL OF MATERIALS				MISCELLANEOUS MATERIALS				TYPICAL DRAWINGS				GENERAL INFORMATION				
ITEM NO.	QTY	LOM	REIN. NUMBER	MATERIAL NUMBER	DESCRIPTION	QTY	LOM	REIN. NUMBER	MATERIAL NUMBER	DESCRIPTION	DWG/FIELD BOOK NO.	TITLE	1. THE MINIMUM DEPTH OF COVER FOR THE PROJECT IS 36 INCHES. ADDITIONAL DEPTH OF COVER IS REQUIRED FOR ROAD AND WATERBODY CROSSINGS, AND IS TO BE IN ACCORDANCE WITH REFERENCED PERMIT DRAWINGS, SITE SPECIFIC DRAWINGS OR CONSTRUCTION SPECIFICATIONS, WHICHEVER IS MORE STRINGENT.			
1	90	FT			36" O.D. x 0.150" WALL, API 5L X70, PSL2, DSAW, 14-16 MILS FBE & 24-30 MILS ARO	0	EA			CATHODIC PROTECTION STD. SINGLE POINT TEST STATION, TYPE 1	21040-510-TYP-2001		2. THE BOUNDARIES OF ALL WORK AREAS WILL BE CLEARLY MARKED AND ALL WORK SHALL REMAIN WITHIN THE DESIGNATED WORK AREA.			
2	2020	FT			36" O.D. x 0.120" WALL, API 5L X70, PSL2, DSAW, 14-16 MILS FBE	0	EA			CATHODIC PROTECTION STD. FOREIGN PIPELINE CROSSING TEST STATION, TYPE 2	21040-510-TYP-2002		3. THE REQUIRED STATE ONE CALL NOTIFICATION IS THE RESPONSIBILITY OF THE CONSTRUCTION CONTRACTOR.			
FITTINGS SUMMARY				CONTINUOUS CONCRETE COATING				PIPE COATING DATA				<p>SPECIAL NOTES</p> <p>1. INDUCTION BEND QUANTITIES ALONG WITH THEIR DESCRIPTIONS ARE LOCATED ON DRAWING 21040-510-SW-FW-00001.</p> <p>2. SEE ARIK DRAWING PACKAGE FOR ANODE BED DEPTH WELL.</p>				
PIPE ASSEMBLIES				PIPE COATING DATA												
QTY	LOM	DESCRIPTION		PIPE COATING: 14 MIL MINIMUM FBE AND 24 MIL MINIMUM ARO BIRTH WELD COATING: 2 PART EPOXY INTERNAL COATING (YES/NO): NO												

LEGEND					REVISIONS					APPROVALS				
	PIPELINE ROUTE			FORECAST WETLAND	NO.	DESCRIPTION	DATE	REV BY	CRK BY	APP BY	DRAWN BY	MB	CONSTRUCTION PERMIT NO.	
	PROPOSED CL			WATERBODY	1	IFC (UPDATE ENV. RE-ROUTES, FOOT-PRINT)	2016-04-08	MB	MJ	MJ	RG	MJ	MAINTENANCE OPERATION REGION	
	NO PERM. ROW			PARCEL NUMBER	2	ISSUED FOR CONSTRUCTION	2015-12-15	MB	MJ	MJ	RG	MJ	MIN. TEST PRESSURE 1816 PSI	
	TYP. CONFO. A1			ROW PARCEL	3	APPROVAL	COMPANY						DESIGN PRESSURE 1440 PSI	
	TYP. CONFO. A2			ADJ. SECTON LINE										

ENVIRONMENTAL

LAND

1 INCH = 200 FT

FLORIDA SOUTHEAST CONNECTION PROJECT

STN: 1160+00 TO 1190+00

FLORIDA SOUTHEAST CONNECTION

ALIGNMENT SHEET

POLK COUNTY, FLORIDA

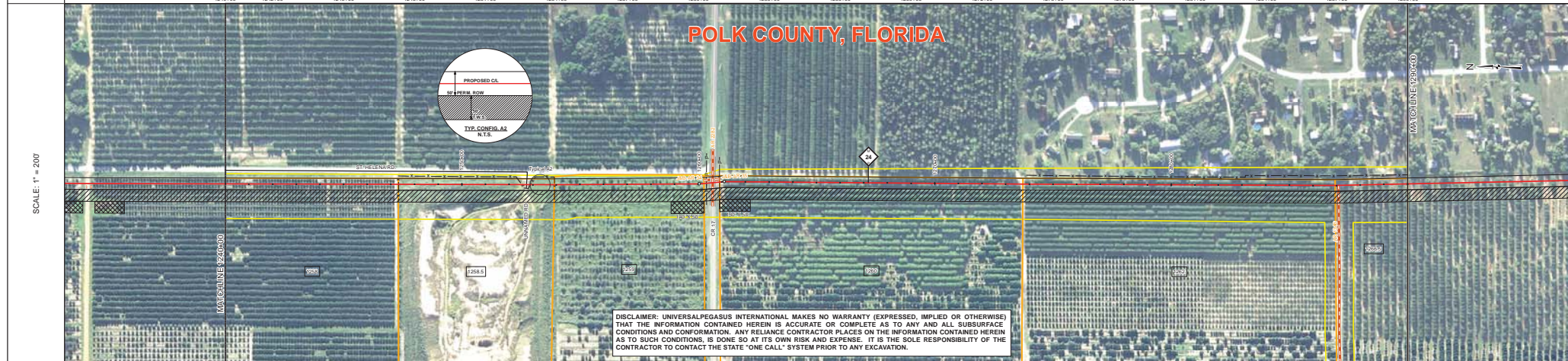
SCALE: 1" = 200'

21040-510-ALS-00026

REV. 1

DISCIPLINE: 03

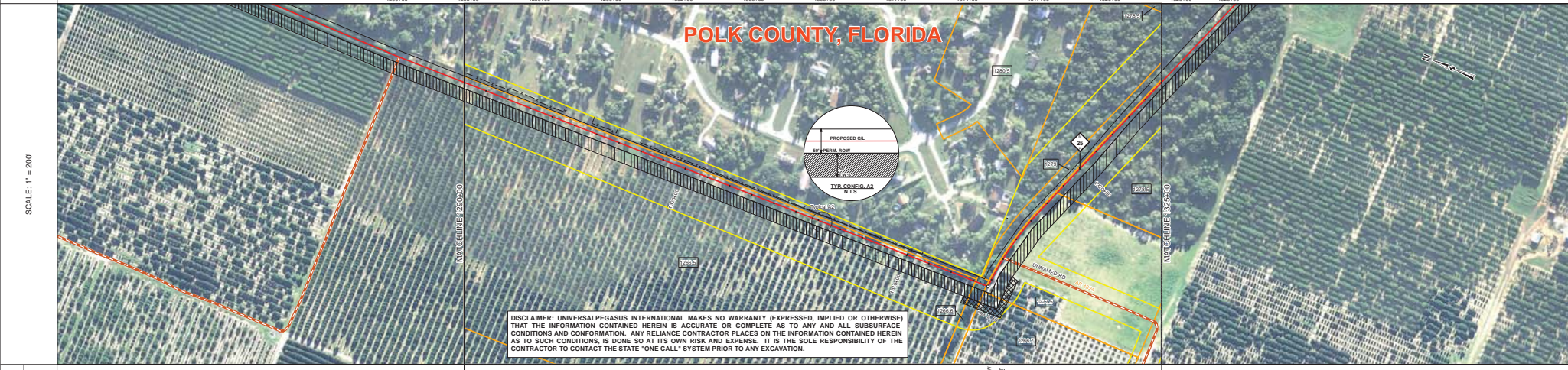
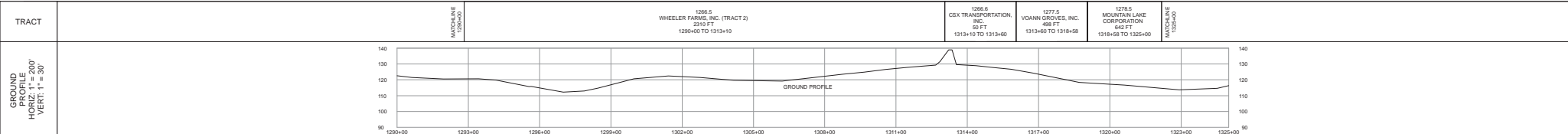
TRACT	1268 NM LITHELL, LLC 731 FT 1245+00 TO 1247+31	1265 G NM LITHELL, LLC 600 FT 1247+31 TO 1253+91	1259 CHANDER P. SINGH AND SOORUJ P. SINGH 653 FT 1253+91 TO 1260+24	CR 17 POLK COUNTY 66 FT 1260+24 TO 1260+90	1360 WHEELER FARMS, INC. 1265 FT 1260+90 TO 1273+73	1362 WHEELER FARMS, INC. 1205 FT 1273+73 TO 1286+93	1266.5 WHEELER FARMS, INC. (TRACT 7) 307 FT 1286+93 TO 1290+00
-------	--	--	---	--	---	---	--



SURVEY DATA	STATIONING	MATERIAL	ENVIRONMENTAL DATA	STATIONS
MATCHLINE 1290+00	MATCHLINE 1290+00	MATCHLINE 1290+00	MATCHLINE 1290+00	MATCHLINE 1290+00

BILL OF MATERIALS		MISCELLANEOUS MATERIALS		TYPICAL DRAWINGS		GENERAL INFORMATION		LEGEND		REVISIONS		APPROVALS						
ITEM NO.	QTY	UOM	REYN. NUMBER	MATERIAL NUMBER	DESCRIPTION	DWG/FIELD BOOK NO.	TITLE	1. THE MINIMUM DEPTH OF COVER FOR THE PROJECT IS 36 INCHES. ADDITIONAL DEPTH OF COVER IS REQUIRED FOR ROAD AND WATERBODY CROSSINGS AND IS TO BE IN ACCORDANCE WITH REFERENCED PERMIT DRAWINGS, SITE SPECIFIC DRAWINGS OR CONSTRUCTION SPECIFICATIONS, WHICHEVER IS MORE STRINGENT.	PIPELINE ROUTE	NO.	DESCRIPTION	DATE	REVISIONS	CHK BY	APP BY	DRAWN BY	MB	CONSTRUCTION PERMIT NO.
1	80	FT			36" O.D. x 0.750" W.T. API 5L X70 PSL2, DR4W, 14-16 MILS FBE & 24-30 MILS ARO		CATHODIC PROTECTION STD. SINGLE POINT TEST STATION, TYPE 1	2. THE BOUNDARIES OF ALL WORK AREAS WILL BE CLEARLY MARKED AND ALL WORK SHALL REMAIN WITHIN THE DESIGNATED WORK AREA.		1	FORNAGE ROAD	2016-04-08	MB	MJ	RG	MB	MJ	MAINTENANCE OPERATION REGION
2	481	FT			36" O.D. x 0.825" W.T. API 5L X70 PSL2, DR4W, 14-16 MILS FBE		CATHODIC PROTECTION STD. FOREIGN PIPELINE CROSSING TEST STATION, TYPE 2	3. THE REQUIRED STATE ONE CALL NOTIFICATION IS THE RESPONSIBILITY OF THE CONSTRUCTION CONTRACTOR.		2	FORNAGE ROAD	2015-12-15	MB	MJ	RG	MB	MJ	MIN. TEST PRESSURE 1816 PSI
3	4438	FT			36" O.D. x 0.750" W.T. API 5L X70 PSL2, DR4W, 14-16 MILS FBE		CONTINUOUS CONCRETE COATING STANDARD FOR 36"/30" PIPELINE	4. THE CONTRACTOR SHALL ACCESS THE WORK AREA USING ONLY PUBLIC ROADS AND APPROVED ACCESS ROADS.		3	FORNAGE ROAD	2015-12-15	MB	MJ	RG	MB	MJ	DESIGN PRESSURE 1440 PSI
4	80	FT					TYPICAL OPEN CUT / BORE	5. ADDITIONAL WARNING SIGNS MAY BE REQUIRED AS DICTATED BY CONSTRUCTION CONTRACT.		4	FORNAGE ROAD	2015-12-15	MB	MJ	RG	MB	MJ	
5	481	FT					CP TEST STATION TYPE 1	6. MAP PROJECTION: NAD 1983 HAIN STATE PLANE FLORIDA EAST FIPS 0801 FEET. VERTICAL DATUM: NAD 83.		5	FORNAGE ROAD	2015-12-15	MB	MJ	RG	MB	MJ	
6	481	FT					CP TEST STATION TYPE 2			6	FORNAGE ROAD	2015-12-15	MB	MJ	RG	MB	MJ	
7	481	FT					CP TEST STATION TYPE 2			7	FORNAGE ROAD	2015-12-15	MB	MJ	RG	MB	MJ	
8	481	FT					CP TEST STATION TYPE 2			8	FORNAGE ROAD	2015-12-15	MB	MJ	RG	MB	MJ	
9	481	FT					CP TEST STATION TYPE 2			9	FORNAGE ROAD	2015-12-15	MB	MJ	RG	MB	MJ	
10	481	FT					CP TEST STATION TYPE 2			10	FORNAGE ROAD	2015-12-15	MB	MJ	RG	MB	MJ	

FITTINGS SUMMARY		CONTINUOUS CONCRETE COATING		PIPE COATING DATA		SPECIAL NOTES	
ITEM NO.	QTY	UOM	REYN. NUMBER	MATERIAL NUMBER	DESCRIPTION	21040-510-TYP-2013	1. INDUCTION BEND QUANTITIES ALONG WITH THEIR DESCRIPTIONS ARE LOCATED ON DRAWING 21040-SG-FW-00006.
						21040-510-TYP-2014	2. SEE ARK DRAWING PACKAGE FOR ANODE BED DEEP WELL.
						21040-510-TYP-2015	
						21040-510-TYP-2016	
						21040-510-TYP-2017	
						21040-510-TYP-2018	
						21040-510-TYP-2019	



DISCLAIMER: UNIVERSALPEGASUS INTERNATIONAL MAKES NO WARRANTY (EXPRESSED, IMPLIED OR OTHERWISE) THAT THE INFORMATION CONTAINED HEREIN IS ACCURATE OR COMPLETE AS TO ANY AND ALL SUBSURFACE CONDITIONS AND CONFORMATION. ANY RELIANCE CONTRACTOR PLACES ON THE INFORMATION CONTAINED HEREIN AS TO SUCH CONDITIONS, IS DONE SO AT ITS OWN RISK AND EXPENSE. IT IS THE SOLE RESPONSIBILITY OF THE CONTRACTOR TO CONTACT THE STATE "ONE CALL" SYSTEM PRIOR TO ANY EXCAVATION.

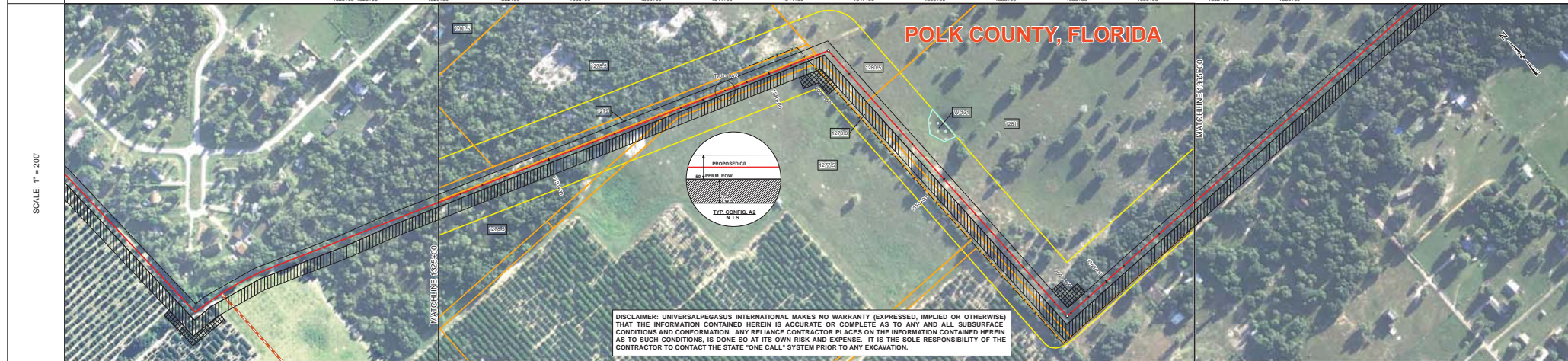
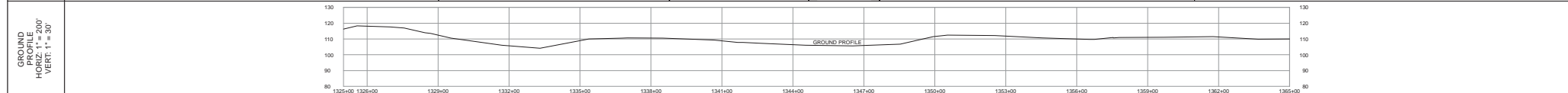
SURVEY DATA		STATIONING	
MATCHLINE 1290+00		MATCHLINE 1325+00	
ENGINEERING DATA		MATERIAL	
REFERENCE DRAWING		3178	
CLASSIFICATION		322	
MINIMUM DEPTH OF COVER		3'	
CATHODIC PROTECTION		SEE REF DWG	
ENVIRONMENTAL DATA		STATIONS	
WETLAND CROSSING		21040-440-PMM-10006	
WETLAND VEGETATION		1321+78 Class II	
PERMIT CONTROL		THIS BAND NOT UTILIZED	
TOPSOIL SALVAGE		THIS BAND NOT UTILIZED	
THREATENED AND ENDANGERED SPECIES		Potential Sand Dink Habitat	
THREATENED AND ENDANGERED SPECIES		THIS BAND NOT UTILIZED	
CONSTRAINT 1		THIS BAND NOT UTILIZED	
CONSTRAINT 2		THIS BAND NOT UTILIZED	
CONSTRAINT 3		THIS BAND NOT UTILIZED	
CONSTRAINT 4		THIS BAND NOT UTILIZED	

BILL OF MATERIALS				MISCELLANEOUS MATERIALS				TYPICAL DRAWINGS		GENERAL INFORMATION	
ITEM NO.	QTY	UOM	DESCRIPTION	QTY	UOM	DESCRIPTION	DWG/FIELD BOOK NO.	TITLE	1.	2.	3.
1	132	FT	36" O.D. x 0.625" W.T. - API 5L X70 PSL2 DRAM, 14-16 MILS FBE	0	EA	SET ON WEIGHTS	21040-510-TYP-20001	CATHODIC PROTECTION STD. SINGLE POINT TEST STATION, TYPE 1	1. THE MINIMUM DEPTH OF COVER FOR THE PROJECT IS 36 INCHES. ADDITIONAL DEPTH OF COVER IS REQUIRED FOR ROAD AND WATERBODY CROSSINGS AND IS TO BE IN ACCORDANCE WITH REFERENCED PERMIT DRAWINGS, SITE SPECIFIC DRAWINGS, OR CONSTRUCTION SPECIFICATIONS, WHICHEVER IS MORE STRINGENT.	2. THE BOUNDARIES OF ALL WORK AREAS WILL BE CLEARLY MARKED AND ALL WORK SHALL REMAIN WITHIN THE DESIGNATED WORK AREA.	3. THE REQUIRED STATE ONE CALL NOTIFICATION IS THE RESPONSIBILITY OF THE CONSTRUCTION CONTRACTOR.
2	1778	FT	36" O.D. x 0.750" W.T. - API 5L X70 PSL2 DRAM, 14-16 MILS FBE	1	EA	PIPELINE MARKERS	21040-510-TYP-20002	CATHODIC PROTECTION STD. FOREIGN PIPELINE CROSSING TEST STATION, TYPE 2	4. THE CONTRACTOR SHALL ACCESS THE WORK AREA USING ONLY PUBLIC ROADS AND APPROVED ACCESS ROADS.	5. ADDITIONAL WARNING SIGNS MAY BE REQUIRED AS DICTATED BY CONSTRUCTION CONTRACT.	6. MAP PROJECTION: NAD 1983 HURN STATE PLANE FLORIDA EAST FIPS 0801 FEET, VERTICAL DATUM: NAVD 83.
FITTINGS SUMMARY				CONTINUOUS CONCRETE COATING				SPECIAL NOTES			
PIPE ASSEMBLIES				PIPE COATING DATA							

LEGEND		REVISIONS	
PIPELINE ROUTE	PROPOSED PIPE	NO.	DESCRIPTION
EXISTING PIPE	EXISTING PIPE	DATE	REV BY
ROAD	ROAD	2016-04-08	MB
RAILROAD	RAILROAD	2015-12-15	MJ
UTILITY LINE	UTILITY LINE	APPROVAL COMPANY	
WATER BODY	WATER BODY	ENVIRONMENTAL	
WATER BODY	WATER BODY	LAND	
WATER BODY	WATER BODY	1 INCH = 200 FT	

APPROVALS			
NO.	DESCRIPTION	DATE	REV BY
1	IFC (UPDATE ENV. RE-ROUTES, FOOT-PRINT)	2016-04-08	MB
2	ISSUED FOR CONSTRUCTION	2015-12-15	MJ
FLORIDA SOUTHEAST CONNECTION PROJECT 0714 - 1200+00 TO 1325+00 FLORIDA SOUTHEAST CONNECTION ALIGNMENT SHEET POLK COUNTY, FLORIDA			
SCALE: 1" = 200'		21040-510-ALS-00029	
		REV. 1	

TRACT	1278.5 MOUNTAIN LAKE CORPORATION 1068 FT 1325+00 TO 1335+48	1278.8 MOUNTAIN LAKE CORPORATION 570 FT 1335+48 TO 1342+18	1280.5 ALCOMA PROPERTIES, LTD. 185 FT 1342+18 TO 1345+39	1281 ALCOMA PROPERTIES, LTD. 185 FT 1345+39 TO 1354+00
-------	---	--	--	--



SURVEY DATA	STATIONING	MATERIAL	21040-440-PMW-10007	Class II	0
ENGINEERING DATA	REFERENCE DRAWING	ENVIRONMENTAL DATA	STATIONS	1333+27 1333+22	1331+24 1331+01
ENVIRONMENTAL DATA	STATIONS	ENVIRONMENTAL DATA	STATIONS	1333+27 1333+22	1331+24 1331+01

BILL OF MATERIALS		MISCELLANEOUS MATERIALS		TYPICAL DRAWINGS		GENERAL INFORMATION		LEGEND		REVISIONS		APPROVALS						
ITEM NO.	QTY	UOM	RECN NUMBER	MATERIAL NUMBER	DESCRIPTION	DWG/FIELD BOOK NO.	TITLE	1. THE MINIMUM DEPTH OF COVER FOR THE PROJECT IS 36 INCHES. ADDITIONAL DEPTH OF COVER IS REQUIRED FOR ROAD AND WATERBODY CROSSINGS, AND IS TO BE IN ACCORDANCE WITH REFERENCED PERMIT DRAWINGS, SITE SPECIFIC DRAWINGS, OR CONSTRUCTION SPECIFICATIONS, WHICHEVER IS MORE STRINGENT.	PIPELINE ROUTE	NO.	DESCRIPTION	DATE	REVISION	CHK BY	APP BY	DRAWN BY	MB	CONSTRUCTION PERMIT NO.
5	4000	FT			36" O.D. x 0.625" WT., API 5L X70, PSL2, DSAW, 14-16 MILS FBE			2. THE BOUNDARIES OF ALL WORK AREAS WILL BE CLEARLY MARKED AND ALL WORK SHALL REMAIN WITHIN THE DESIGNATED WORK AREA.	PIPELINE ROUTE	1	IFC UPDATE ENV. RE ROUTES FOOTPRINT	2016-04-08	MB	MJ	RG			MAINTENANCE OPERATION REGION
FITTINGS SUMMARY		CONTINUOUS CONCRETE COATING		PIPE COATING DATA		SPECIAL NOTES		LEGEND		REVISIONS		APPROVALS						
ITEM NO.	QTY	UOM	RECN NUMBER	MATERIAL NUMBER	DESCRIPTION	21040-510-TYP-20001	CATHODIC PROTECTION STD. SINGLE POINT TEST STATION, TYPE 1	3. THE REQUIRED STATE ONE CALL NOTIFICATION IS THE RESPONSIBILITY OF THE CONSTRUCTION CONTRACTOR.	PIPELINE ROUTE	2	ISSUED FOR CONSTRUCTION	2015-12-15	MB	MJ	RG			DESIGN PRESSURE 1816 PSI
1	EA				90" 3R HORIZONTAL FITTING	21040-510-TYP-20002	CATHODIC PROTECTION STD. FOREIGN PIPELINE CROSSING TEST STATION, TYPE 2	4. THE CONTRACTOR SHALL ACCESS THE WORK AREA USING ONLY PUBLIC ROADS AND APPROVED ACCESS ROADS.	PIPELINE ROUTE	3	APPROVAL							DESIGN PRESSURE 1440 PSI
PIPE ASSEMBLIES		CONTINUOUS CONCRETE COATING		PIPE COATING DATA		SPECIAL NOTES		LEGEND		REVISIONS		APPROVALS						
QTY	UOM	DESCRIPTION	21040-510-TYP-20003	CP TEST STATION TYPE 1	21040-510-TYP-20004	CP TEST STATION TYPE 2	5. ADDITIONAL WARNING SIGNS MAY BE REQUIRED AS DICTATED BY CONSTRUCTION CONTRACT.	PIPELINE ROUTE	4	APPROVAL								
PIPE ASSEMBLIES		CONTINUOUS CONCRETE COATING		PIPE COATING DATA		SPECIAL NOTES		LEGEND		REVISIONS		APPROVALS						
QTY	UOM	DESCRIPTION	21040-510-TYP-20005	CP TEST STATION TYPE 2	21040-510-TYP-20006	AERIAL MARKERS	6. MAP PROJECTION: NAD 1983 HARN STATE PLANE FLORIDA, EAST TIPS 0001 FEET, VERTICAL DATUM: NAVD 83.	PIPELINE ROUTE	5	APPROVAL								
PIPE ASSEMBLIES		CONTINUOUS CONCRETE COATING		PIPE COATING DATA		SPECIAL NOTES		LEGEND		REVISIONS		APPROVALS						
QTY	UOM	DESCRIPTION	21040-510-TYP-20007	AERIAL MARKER DETAIL	21040-510-TYP-20008	AERIAL MARKER DETAIL	7. INDUCTION BEND QUANTITIES ALONG WITH THEIR DESCRIPTIONS ARE LOCATED ON DRAWING 21040-550-FW-00001.	PIPELINE ROUTE	6	APPROVAL								
PIPE ASSEMBLIES		CONTINUOUS CONCRETE COATING		PIPE COATING DATA		SPECIAL NOTES		LEGEND		REVISIONS		APPROVALS						
QTY	UOM	DESCRIPTION	21040-510-TYP-20009	AERIAL MARKER DETAIL	21040-510-TYP-20010	PIPELINE MARKER "WARNING" DETAIL	8. SEE ARIK DRAWING PACKAGE FOR ANODE BED DEEP WELL.	PIPELINE ROUTE	7	APPROVAL								