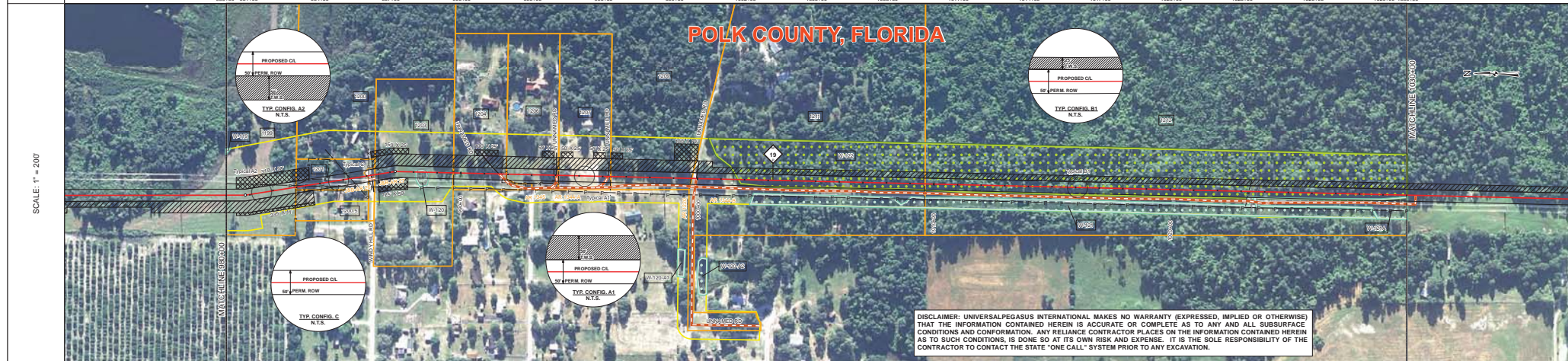
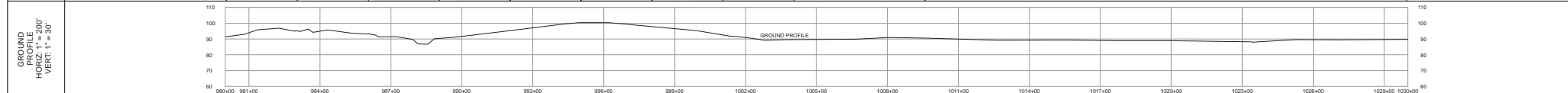




TRACT	1199 HOLMES GARDENS ASSOCIATES, LTD. 207 FT 980+00 TO 982+97	1201 MICHAEL ALLEN COLE 302 FT 982+97 TO 985+99	WINDY HILL RD POLK COUNTY 125 FT 985+99 TO 986+34	1203 BETTY L. CARP AND ROBERT C. BLUE 125 FT 986+34 TO 989+68	1204 KEITH E. WEBSTER AND ROBERT L. WEBSTER 224 FT 989+68 TO 991+92	1206 JULIE E. FREIBAUGH AND DENNIS E. CLARK 231 FT 991+92 TO 994+12	1207 NELSON J. BHEALME AND JAMES A. BHEALME, L.P.A. 221 FT 994+12 TO 996+33	1209 VASHTA LAND, INC. 143 FT 996+33 TO 999+76	1211 E. WILLIAM BARHAM HART AND ANGIE O. BARNHART 287 FT 999+76 TO 1002+63	1212 BARBARA LOUISE VAUGHN HUNTER 203 FT 1002+63 TO 1003+00
-------	--	---	---	---	---	---	---	--	--	---



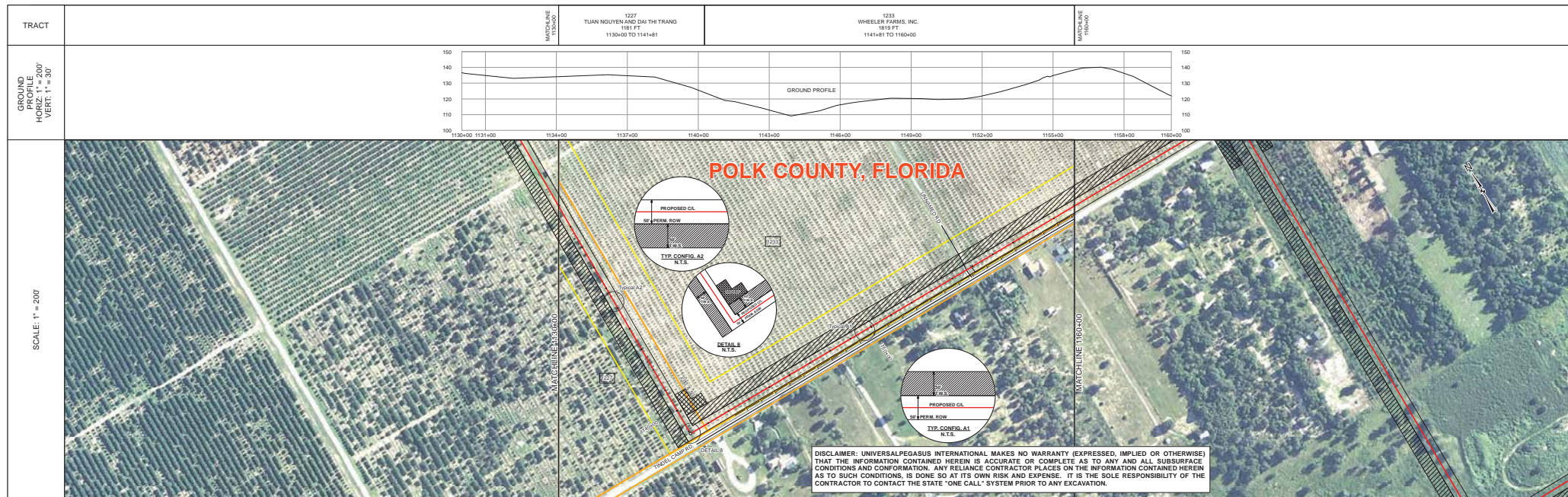
SURVEY DATA		STATIONING		MATERIAL		STATIONS	
MATCHLINE	980+00	MATCHLINE	980+00	MATCHLINE	980+00	MATCHLINE	980+00
STATIONING	980+00	981+00	982+00	983+00	984+00	985+00	986+00
MATERIAL	3	4	5	6	7	8	9
STATIONS	980+00	981+00	982+00	983+00	984+00	985+00	986+00

BILL OF MATERIALS				MISCELLANEOUS MATERIALS				TYPICAL DRAWINGS				GENERAL INFORMATION			
ITEM NO.	QTY	UOM	DESCRIPTION	QTY	UOM	DESCRIPTION	DWG/FIELD BOOK NO.	TITLE	1. THE MINIMUM DEPTH OF COVER FOR THE PROJECT IS 36 INCHES. ADDITIONAL DEPTH OF COVER IS REQUIRED FOR ROAD AND WATERBODY CROSSINGS, AND IS TO BE IN ACCORDANCE WITH REFERENCED PERMIT DRAWINGS. SITE SPECIFIC DRAWINGS OR CONSTRUCTION SPECIFICATIONS, WHICHEVER IS MORE STRINGENT.	2. THE BOUNDARIES OF ALL WORK AREAS WILL BE CLEARLY MARKED AND ALL WORK SHALL REMAIN WITHIN THE DESIGNATED WORK AREA.	3. THE REQUIRED STATE ONE CALL NOTIFICATION IS THE RESPONSIBILITY OF THE CONSTRUCTION CONTRACTOR.	4. THE CONTRACTOR SHALL ACCESS THE WORK AREA USING ONLY PUBLIC ROADS AND APPROVED ACCESS ROADS.	5. ADDITIONAL WARNING SIGNS MAY BE REQUIRED AS DICTATED BY CONSTRUCTION CONDITIONS.	6. MAP PROJECTION: NAD 1983 HARN STATE PLANE FLORIDA EAST TIPS 0001 FEET, VERTICAL DATUM: NAVD 83.	
4	287	EA	36" O.D. x 0.750" WT. API 5L X70, PSL2, DSWW, 14-16 MLS FREE & 24-30 MLS ARO	287	EA	SET ON WEIGHTS	21040-510-TYP-20001	CATHODIC PROTECTION STD. SINGLE POINT TEST STATION.	21040-510-TYP-20002	CATHODIC PROTECTION STD. FOREIGN PIPELINE CROSSING TEST STATION, TYPE 2	21040-510-TYP-20003	GP TEST STATION TYPE 2	21040-510-TYP-20004	GP TEST STATION TYPE 2	
5	4720	FT	36" O.D. x 0.625" WT. API 5L X70, PSL2, DSWW, 14-16 MLS FREE	0	EA	ANDOE BED DEEP WELL	21040-510-TYP-20012	CONTINUOUS CONCRETE COATING STANDARD FOR 36"/30" PIPELINE	21040-510-TYP-20014	WARNING SIGN DETAIL	21040-510-TYP-20015	AERIAL MARKER DETAIL	21040-510-TYP-20016	AERIAL MARKER DETAIL	
FITTINGS SUMMARY				CONTINUOUS CONCRETE COATING				SPECIAL NOTES							
ITEM NO.	QTY	UOM	DESCRIPTION	QTY	UOM	DESCRIPTION	1. INDUCTION BEND QUANTITIES ALONG WITH THEIR DESCRIPTIONS ARE LOCATED ON DRAWING 21040-SS-01-00000. 2. A - SEE ARIK DRAWING PACKAGE FOR ANDOE BED DEEP WELL.								
PIPE ASSEMBLIES				PIPE COATING DATA				PIPELINE MARKER ("WARNING") DETAIL							
QTY	UOM	DESCRIPTION		QTY	UOM	DESCRIPTION	PIPELINE MARKER ("WARNING") DETAIL								

LEGEND				REVISIONS				APPROVALS				
PROPOSED CL.	PROPOSED CL.	PROPOSED CL.	PROPOSED CL.	NO.	DESCRIPTION	DATE	REV BY	CHK BY	APP BY	DRAWN BY	MB	CONSTRUCTION PERMIT NO.
5/8" PERM. ROW	5/8" PERM. ROW	5/8" PERM. ROW	5/8" PERM. ROW	1	IFC (UPDATE ENV. RE-ROUTES FOOTPRINT)	2016-04-08	MB	MJ	RG	PROJECT MANAGER	RG	MAINTENANCE OPERATION REGION
TYP. CONFIG. A2	TYP. CONFIG. B1	TYP. CONFIG. C	TYP. CONFIG. A1	0	ISSUED FOR CONSTRUCTION	2015-12-15	MB	MJ	RG	PROJECT DEF. NO.	RG	MM. TEST PRESSURE 1816 PSI
N.T.S.	N.T.S.	N.T.S.	N.T.S.	APPROVAL				COMPANY				
N.T.S.	N.T.S.	N.T.S.	N.T.S.	UNIVERSAL PEGASUS INTERNATIONAL				FLORIDA SOUTHEAST CONNECTION				
N.T.S.	N.T.S.	N.T.S.	N.T.S.	FLORIDA SOUTHEAST CONNECTION PROJECT				ALIGNMENT SHEET				
N.T.S.	N.T.S.	N.T.S.	N.T.S.	POLK COUNTY, FLORIDA				DISCIPLINE: 03				
N.T.S.	N.T.S.	N.T.S.	N.T.S.	SCALE: 1" = 200'				21040-510-ALS-00022				
N.T.S.	N.T.S.	N.T.S.	N.T.S.	REV. 1				SHEET 22				







SURVEY DATA	STATIONING	MATCHLINE 1130+00	1130+00	1131+00	1133+00	1134+00	1137+00	1140+00	1143+00	1146+00	1149+00	1152+00	1155+00	1158+00	1160+00	MATCHLINE 1160+00
	MATERIAL	MATCHLINE 1130+00	1131+00	1133+00	1134+00	1137+00	1140+00	1143+00	1146+00	1149+00	1152+00	1155+00	1158+00	1160+00	MATCHLINE 1160+00	
ENGINEERING DATA	REFERENCE DRAWING															
	CLASS LOCATION	Class B														
ENVIRONMENTAL DATA	STATIONS	MATCHLINE 1130+00	1131+00	1133+00	1134+00	1137+00	1140+00	1143+00	1146+00	1149+00	1152+00	1155+00	1158+00	1160+00	MATCHLINE 1160+00	
	PERMITTING	EROSION CONTROL CODE FLOOD HAZARD CODE TOPOGRAPHY CONTROL WETLANDS/CATFISH PROTECTION WETLANDS/NETLAND CROSSINGS WETLANDS/NETLAND VEGETATION THREATENED AND ENDANGERED SPECIES SPECIAL CONSTRAINTS CONSTRAINT 1 CONSTRAINT 2 CONSTRAINT 3 CONSTRAINT 4														

BILL OF MATERIALS		MISCELLANEOUS MATERIALS		TYPICAL DRAWINGS		GENERAL INFORMATION		LEGEND		REVISIONS		APPROVALS										
ITEM NO.	QTY	UOM	RECN NUMBER	MATERIAL NUMBER	DESCRIPTION	DWG/FIELD BOOK NO.	TITLE	DESCRIPTION	SYMBOL	NO.	DESCRIPTION	DATE	REV BY	APP BY	DRAWN BY	CHECKED BY	PROJECT MANAGER	DESIGN PRESSURE	DESIGN PRESSURE	CONSTRUCTION PERMIT NO.	MAINTENANCE OPERATION REGION	
1	60	FT			36" O.D. x 0.150" W.T. - API 5L X70 PSL2, DSAW, 14-16 MILS FBE & 24-30 MILS ARO			PIPELINE MARKERS	21040-510-TYP-2001	1	1	1										
2	2940	FT			36" O.D. x 0.125" W.T. - API 5L X70 PSL2, DSAW, 14-16 MILS FBE			WARNING SIGNS	21040-510-TYP-2002	2	2	2										
FITTINGS SUMMARY		CONTINUOUS CONCRETE COATING		PIPE COATING DATA		SPECIAL NOTES		REVISIONS		APPROVALS		APPROVALS										
1	EA				90° 3R HORIZONTAL FITTING			CONCRETE COATING	21040-510-TYP-2011	1	1	1										
PIPE ASSEMBLIES		PIPE COATING DATA		SPECIAL NOTES		SPECIAL NOTES		REVISIONS		APPROVALS		APPROVALS										
QTY	UOM	DESCRIPTION		DESCRIPTION		DESCRIPTION		DESCRIPTION		DESCRIPTION		DESCRIPTION										
		PIPE COATING: 14 MIL MINIMUM FBE AND 24 MIL MINIMUM ARO		PIPE COATING: 14 MIL MINIMUM FBE AND 24 MIL MINIMUM ARO		PIPE COATING: 14 MIL MINIMUM FBE AND 24 MIL MINIMUM ARO		PIPE COATING: 14 MIL MINIMUM FBE AND 24 MIL MINIMUM ARO		PIPE COATING: 14 MIL MINIMUM FBE AND 24 MIL MINIMUM ARO		PIPE COATING: 14 MIL MINIMUM FBE AND 24 MIL MINIMUM ARO										
		INTERNAL COATING (YES/NO): NO		INTERNAL COATING (YES/NO): NO		INTERNAL COATING (YES/NO): NO		INTERNAL COATING (YES/NO): NO		INTERNAL COATING (YES/NO): NO		INTERNAL COATING (YES/NO): NO										