

DISCLAIMER: UNIVERSALPEGASUS INTERNATIONAL MAKES NO WARRANTY (EXPRESSED, IMPLIED OR OTHERWISE) THAT THE INFORMATION CONTAINED HEREIN IS ACCURATE OR COMPLETE AS TO ANY AND ALL SUBSURFACE CONDITIONS AND CONFORMATION. ANY RELIANCE CONTRACTOR PLACES ON THE INFORMATION CONTAINED HEREIN AS TO SUCH CONDITIONS, IS DONE SO AT ITS OWN RISK AND EXPENSE. IT IS THE SOLE RESPONSIBILITY OF THE CONTRACTOR TO CONTACT THE STATE "ONE CALL" SYSTEM PRIOR TO ANY EXCAVATION.

SURVEY DATA		STATIONING	
MATCHLINE 440+00		MATCHLINE 440+00	
MATCHLINE 440+00	267.7' CCC 526'	MATCHLINE 440+00	254'
MATCHLINE 440+00	147+97	MATCHLINE 440+00	177'
MATCHLINE 440+00	145+06	MATCHLINE 440+00	1197.7' CCC
MATCHLINE 440+00	145+06	MATCHLINE 440+00	1197.7' CCC

ENGINEERING DATA		MATERIAL	
REFERENCE DRAWING	CLASS LOCATION		
MINIMUM DEPTH OF COVER	CLASSIFICATION/CATHODIC PROTECTION		
INTERBODY/WETLAND CROSSINGS	W-071	W-075	
INTERBODY/WETLAND LENGTH	207	106	207

ENVIRONMENTAL DATA		STATIONS	
PERMIT/REGULATORY CONTROL	EROSION CONTROL CODE		
TOPICAL SALVAGE			
THREATENED AND ENDANGERED SPECIES			
SPECIAL CONSTRAINT			
CONSTRAINT 1			
CONSTRAINT 2			
CONSTRAINT 3			
CONSTRAINT 4			

BILL OF MATERIALS				MISCELLANEOUS MATERIALS				TYPICAL DRAWINGS				GENERAL INFORMATION				
TEM NO.	QTY	UOM	REIN. NUMBER	MATERIAL NUMBER	DESCRIPTION	QTY	UOM	REIN. NUMBER	MATERIAL NUMBER	DESCRIPTION	DWG/FIELD BOOK NO.	TITLE	1. THE MINIMUM DEPTH OF COVER FOR THE PROJECT IS 36 INCHES. ADDITIONAL DEPTH OF COVER IS REQUIRED FOR ROAD AND WATERBODY CROSSINGS, AND IS TO BE IN ACCORDANCE WITH REFERENCED PERMIT DRAWINGS, SITE SPECIFIC DRAWINGS, OR CONSTRUCTION SPECIFICATIONS, WHICHEVER IS MORE STRINGENT. 2. THE BOUNDARIES OF ALL WORK AREAS WILL BE CLEARLY MARKED AND ALL WORK SHALL REMAIN WITHIN THE DESIGNATED WORK AREA. 3. THE REQUIRED STATE ONE CALL NOTIFICATION IS THE RESPONSIBILITY OF THE CONSTRUCTION CONTRACTOR. 4. THE CONTRACTOR SHALL ACCESS THE WORK AREA USING ONLY PUBLIC ROADS AND APPROVED ACCESS ROADS. 5. ADDITIONAL WARNING SIGNS MAY BE REQUIRED AS DICTATED BY CONSTRUCTION CONTRACT. 6. MAP PROJECTION: NAD 1983 HARN STATE PLANE FLORIDA EAST FIPS 8061 FEET, VERTICAL DATUM: NAD 83.			
1	4800	FT		36" O.D. X 0.520" WT. API 5L X70 F82, DRAM, 14-18 MILS FBE	EA					SET ON WEIGHTS	21040-510-TYP-20001	CATHODIC PROTECTION STD. SINGLE POINT TEST STATION, TYPE 1				
2	80	FT		36" O.D. X 0.625" WT. API 5L X70 F82, DRAM, 14-18 MILS FBE & 24-30 MILS ARO	EA					WARNING SIGNS	21040-510-TYP-20002	CATHODIC PROTECTION STD. FOREIGN PIPELINE CROSSING TEST STATION, TYPE 2				
3	40	FT		36" O.D. X 0.625" WT. API 5L X70 F82, DRAM, 14-18 MILS FBE	EA					CP TEST STATION TYPE 1	21040-510-TYP-20003	CATHODIC PROTECTION STD. FOREIGN PIPELINE CROSSING TEST STATION, TYPE 2				
					EA					CP TEST STATION TYPE 2	21040-510-TYP-20009	TYPICAL OPEN CUT / BORE				
					EA					AERIAL MARKERS	21040-510-TYP-20112	CONTINUOUS CONCRETE COATING STANDARD FOR 36"/30" PIPELINE				
					EA					ANODE BED DEEP WELL	21040-510-TYP-20114	TYPICAL SADDLE BAG WEIGHTS				
					EA						21040-510-TYP-20115	AERIAL MARKER INSTALLATION DETAIL				
					EA						21040-510-TYP-20116	AERIAL MARKER DETAIL				
					EA						21040-510-TYP-20117	TYPICAL PIPELINE MARKER ASSEMBLY				
					EA						21040-510-TYP-20118	PIPELINE MARKER "WARNING" DECAL				

FITTINGS SUMMARY				CONTINUOUS CONCRETE COATING				PIPE COATING DATA							
TEM NO.	QTY	UOM	REIN. NUMBER	MATERIAL NUMBER	DESCRIPTION	QTY	UOM	REIN. NUMBER	MATERIAL NUMBER	DESCRIPTION	QTY	UOM	REIN. NUMBER	MATERIAL NUMBER	DESCRIPTION
1	1408	FT			7" OF CONTINUOUS CONCRETE COATING (140 PCF DENSITY CONCRETE)										

PIPE ASSEMBLIES			
QTY	UOM		DESCRIPTION
			PIPE COATING: 14 MIL MINIMUM FBE AND 24 MIL MINIMUM ARO
			SOFT WELD COATING: 2 PART EPOXY
			INTERNAL COATING (YES/NO): NO

LEGEND

PIPELINE ROUTE: 1. PIPELINE ROUTE

LINE PIPE: 2. LINE PIPE

CONCRETE: 3. CONCRETE

WATER BODY: 4. WATER BODY

ROAD: 5. ROAD

ROW: 6. ROW

RIGHT OF WAY: 7. RIGHT OF WAY

ADDITIONAL: 8. ADDITIONAL

ADDITIONAL: 9. ADDITIONAL

ADDITIONAL: 10. ADDITIONAL

ADDITIONAL: 11. ADDITIONAL

ADDITIONAL: 12. ADDITIONAL

ADDITIONAL: 13. ADDITIONAL

ADDITIONAL: 14. ADDITIONAL

ADDITIONAL: 15. ADDITIONAL

ADDITIONAL: 16. ADDITIONAL

ADDITIONAL: 17. ADDITIONAL

ADDITIONAL: 18. ADDITIONAL

ADDITIONAL: 19. ADDITIONAL

ADDITIONAL: 20. ADDITIONAL

REVISIONS

NO.	DESCRIPTION	DATE	REV BY	APP BY
1	IFC (UPDATE ENV. RE-ROUTES, FOOT-PRINT)	2016-04-08	MB	MJ
2	ISSUED FOR CONSTRUCTION	2015-12-15	MB	MJ

APPROVAL COMPANY

APPROVALS

NO.	DESCRIPTION	DATE	REV BY	APP BY
1	CONSTRUCTION PERMIT		MB	MJ
2	MAINTENANCE OPERATION REGION		MB	MJ
3	MIN. TEST PRESSURE	1816	PSI	
4	DESIGN PRESSURE	1440	PSI	

FLORIDA SOUTHEAST CONNECTION PROJECT

STA. 440+00 TO 490+00

FLORIDA SOUTHEAST CONNECTION

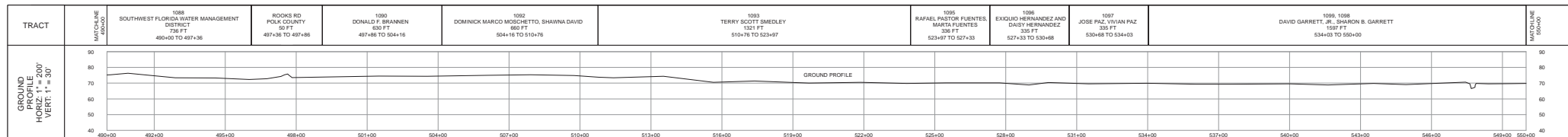
ALIGNMENT SHEET 1

POLK COUNTY, FLORIDA

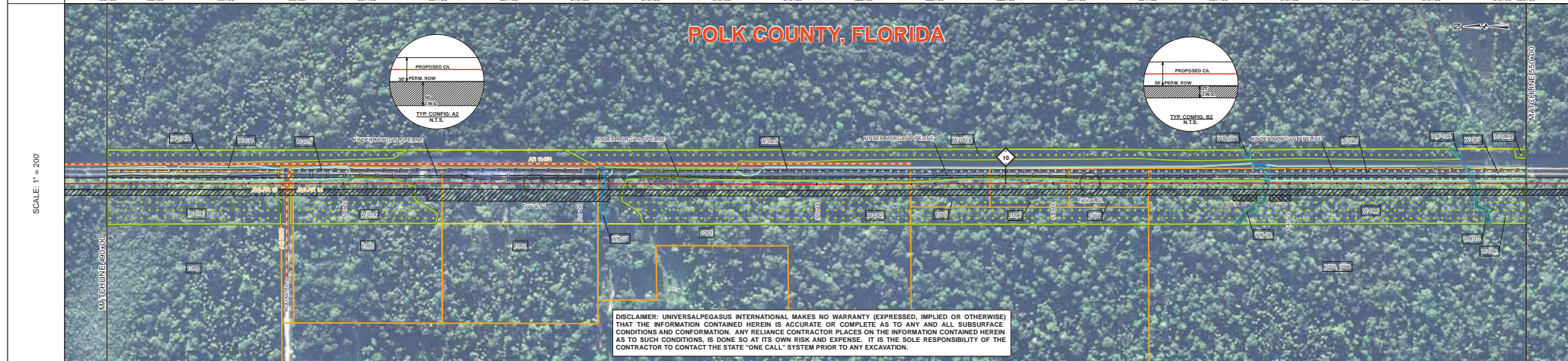
SCALE: 1" = 200'

21040-510-ALS-00011

REV. 1



POLK COUNTY, FLORIDA



SURVEY DATA		STATIONING		MATERIAL	
MATCHLINE 400+00		MATCHLINE 550+00		MATCHLINE 400+00	
MATCHLINE 550+00		MATCHLINE 400+00		MATCHLINE 550+00	
MATCHLINE 400+00		MATCHLINE 550+00		MATCHLINE 400+00	
MATCHLINE 550+00		MATCHLINE 400+00		MATCHLINE 550+00	

BILL OF MATERIALS		MISCELLANEOUS MATERIALS		TYPICAL DRAWINGS		GENERAL INFORMATION	
1	5920 FT	36" O.D. x 0.520" W.T. - API 5L X70 F80 F150	21040-510-TYP-2001	CATHODIC PROTECTION STD. SINGLE POINT TEST STATION, TYPE 1	1. THE MINIMUM DEPTH OF COVER FOR THE PROJECT IS 36 INCHES. ADDITIONAL DEPTH OF COVER IS REQUIRED FOR ROAD AND WATERBODY CROSSINGS, AND IS TO BE IN ACCORDANCE WITH REFERENCED PERMIT DRAWINGS, SITE SPECIFIC DRAWINGS, OR CONSTRUCTION SPECIFICATIONS, WHICHEVER IS MORE STRINGENT.	2. THE BOUNDARIES OF ALL WORK AREAS WILL BE CLEARLY MARKED AND ALL WORK SHALL REMAIN WITHIN THE DESIGNATED WORK AREA.	3. THE REQUIRED STATE ONE CALL NOTIFICATION IS THE RESPONSIBILITY OF THE CONSTRUCTION CONTRACTOR.
2	80 FT	36" O.D. x 0.625" W.T. - API 5L X70 F80 F150	21040-510-TYP-2002	CATHODIC PROTECTION STD. FOREIGN PIPELINE CROSSING TEST STATION, TYPE 2	4. THE CONTRACTOR SHALL ACCESS THE WORK AREA USING ONLY PUBLIC ROADS AND APPROVED ACCESS ROADS.	5. ADDITIONAL WARNING SIGNS MAY BE REQUIRED AS DICTATED BY CONSTRUCTION CONTRACT.	6. MAP PROJECTION: NAD 1983 HARN STATE PLANE FLORIDA EAST FIPS 5001 FEET, VERTICAL DATUM: NAVD 83.
FITTINGS SUMMARY		CONTINUOUS CONCRETE COATING		TYPICAL DRAWINGS		GENERAL INFORMATION	
1	4076 FT	7" OF CONTINUOUS CONCRETE COATING (140 PCF DENSITY CONCRETE)	21040-510-TYP-2015	CONTINUOUS CONCRETE COATING STANDARD FOR 36"/30" PIPELINE	21040-510-TYP-2011	AERIAL MARKER INSTALLATION DETAIL	1. INDUCTION BEND QUANTITIES ALONG WITH THEIR DESCRIPTIONS ARE LOCATED ON DRAWING 21040-SG-EW-00001.
PIPE ASSEMBLIES		PIPE COATING DATA		TYPICAL DRAWINGS		GENERAL INFORMATION	
1	4076 FT	PIPE COATING: 14 MIL MINIMUM FBE AND 24 MIL MINIMUM ARO	21040-510-TYP-2016	PIPELINE MARKER DETAIL	21040-510-TYP-2017	TYPICAL PIPELINE MARKER ASSEMBLY	2. A - SEE ARM DRAWING PACKAGE FOR ANODE BED DEEP WELL.
PIPE ASSEMBLIES		PIPE COATING DATA		TYPICAL DRAWINGS		GENERAL INFORMATION	
1	4076 FT	INTERNAL COATING (YES/NO): NO	21040-510-TYP-2018	PIPELINE MARKER "WARNING" DECAL	21040-510-TYP-2019	PIPELINE MARKER "WARNING" DECAL	

LEGEND

- PIPELINE ROUTE
- RIGHT-OF-WAY BOUNDARY
- ADDITIONAL TEMPORARY BOUNDARY
- NON-FORRESTED WETLAND
- FORRESTED WETLAND
- WATERBODY
- PAVED ROADWAY
- UNPAVED ROADWAY
- ROADWAY BUFFER (50 FT)
- ROADWAY BUFFER (100 FT)
- ROADWAY BUFFER (150 FT)
- ROADWAY BUFFER (200 FT)
- ROADWAY BUFFER (250 FT)
- ROADWAY BUFFER (300 FT)
- ROADWAY BUFFER (350 FT)
- ROADWAY BUFFER (400 FT)
- ROADWAY BUFFER (450 FT)
- ROADWAY BUFFER (500 FT)
- ROADWAY BUFFER (550 FT)
- ROADWAY BUFFER (600 FT)
- ROADWAY BUFFER (650 FT)
- ROADWAY BUFFER (700 FT)
- ROADWAY BUFFER (750 FT)
- ROADWAY BUFFER (800 FT)
- ROADWAY BUFFER (850 FT)
- ROADWAY BUFFER (900 FT)
- ROADWAY BUFFER (950 FT)
- ROADWAY BUFFER (1000 FT)

REVISIONS

NO.	DESCRIPTION	DATE	REV BY	CHK BY	APP BY
1	IFC (UPDATE ENV. RE-ROUTES, FOOT-PRINT)	2016-04-08	MB	MJ	RG
2	ISSUED FOR CONSTRUCTION	2015-12-15	MB	MJ	RG

APPROVALS

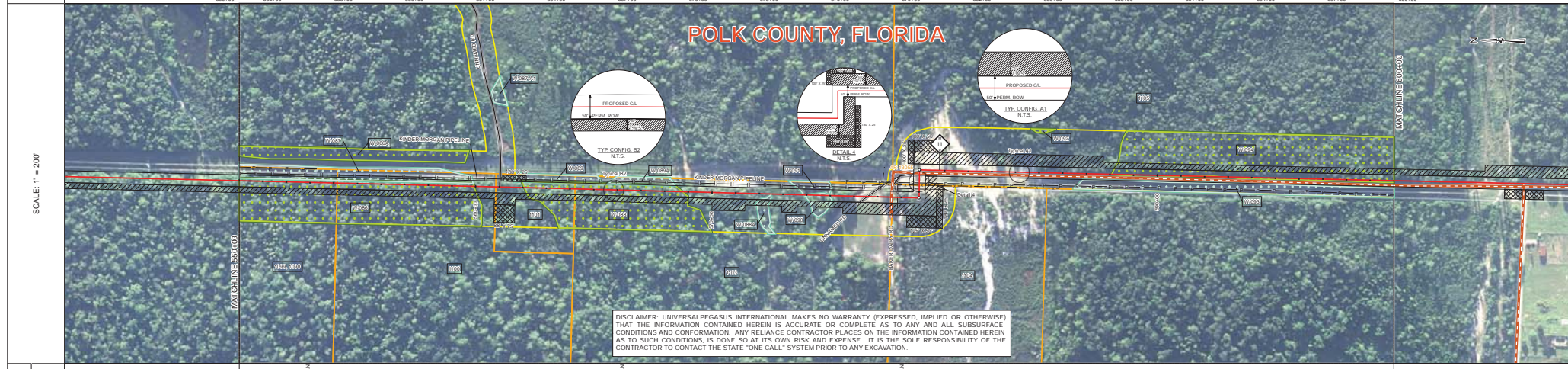
CONSTRUCTION	PERMIT NO.
MB	
MJ	
RG	

UniversalPegasus INTERNATIONAL
 A Subsidiary of Hemisphere Health Solutions

FLORIDA SOUTHEAST CONNECTION
 STA. 400+00 TO 550+00
 FLORIDA SOUTHEAST CONNECTION ALIGNMENT SHEET
 POLK COUNTY, FLORIDA

SCALE: 1" = 200' 21040-510-ALS-00012 REV. 1

TRACT	1099, 1098 DAVID GARRETT JR. SHARON E. GARRETT 415 FT 550+00 TO 564+15	1101 KARL C. LANGE 470 FT 554+15 TO 560+85	1101 JAMES W. FLOWDEN 308 FT 560+85 TO 564+21	1103 LANDMARK BAPTIST CHURCH, INC. OF HANES CITY 154 FT 564+21 TO 574+62	1104 SOUTHWEST FLORIDA WATER MANAGEMENT DISTRICT 188 FT 574+62 TO 579+30	1105 AVIATAR PROPERTIES, INC. 2075 FT 579+30 TO 600+00
-------	--	---	--	---	---	---



DISCLAIMER: UNIVERSAL PEGASUS INTERNATIONAL MAKES NO WARRANTY (EXPRESSED, IMPLIED OR OTHERWISE) THAT THE INFORMATION CONTAINED HEREIN IS ACCURATE OR COMPLETE AS TO ANY AND ALL SUBSURFACE CONDITIONS AND CONFIRMATION. ANY RELIANCE CONTRACTOR PLACES ON THE INFORMATION CONTAINED HEREIN AS TO SUCH CONDITIONS, IS DONE SO AT ITS OWN RISK AND EXPENSE. IT IS THE SOLE RESPONSIBILITY OF THE CONTRACTOR TO CONTACT THE STATE "ONE CALL" SYSTEM PRIOR TO ANY EXCAVATION.

SURVEY DATA	STATIONING	MATERIAL	ENVIRONMENTAL DATA	
			STATIONS	STATIONS
	550+00	1044" C.C.C.	550+00	550+00
	552+00		552+00	552+00
	554+00		554+00	554+00
	556+00		556+00	556+00
	558+00		558+00	558+00
	560+00		560+00	560+00
	562+00		562+00	562+00
	564+00		564+00	564+00
	566+00		566+00	566+00
	568+00		568+00	568+00
	570+00		570+00	570+00
	572+00		572+00	572+00
	574+00		574+00	574+00
	576+00		576+00	576+00
	578+00		578+00	578+00
	580+00		580+00	580+00
	582+00		582+00	582+00
	584+00		584+00	584+00
	586+00		586+00	586+00
	588+00		588+00	588+00
	590+00		590+00	590+00
	592+00		592+00	592+00
	594+00		594+00	594+00
	596+00		596+00	596+00
	598+00		598+00	598+00
	600+00		600+00	600+00

BILL OF MATERIALS		MISCELLANEOUS MATERIALS		TYPICAL DRAWINGS		GENERAL INFORMATION		LEGEND		REVISIONS		APPROVALS											
ITEM NO.	QTY	UOM	RECN NUMBER	MATERIAL NUMBER	DESCRIPTION	DWG/FIELD BOOK NO.	TITLE	1. THE MINIMUM DEPTH OF COVER FOR THE PROJECT IS 36 INCHES. ADDITIONAL DEPTH OF COVER IS REQUIRED FOR ROAD AND WATERBODY CROSSINGS, AND IS TO BE IN ACCORDANCE WITH REFERENCED PERMIT DRAWINGS, SITE SPECIFIC DRAWINGS, OR CONSTRUCTION SPECIFICATIONS, WHICHEVER IS MORE STRINGENT.	2. THE BOUNDARIES OF ALL WORK AREAS WILL BE CLEARLY MARKED AND ALL WORK SHALL REMAIN WITHIN THE DESIGNATED WORK AREA.	3. THE REQUIRED STATE ONE CALL NOTIFICATION IS THE RESPONSIBILITY OF THE CONSTRUCTION CONTRACTOR.	4. THE CONTRACTOR SHALL ACCESS THE WORK AREA USING ONLY PUBLIC ROADS AND APPROVED ACCESS ROADS.	5. ADDITIONAL WARNING SIGNS MAY BE REQUIRED AS DICTATED BY CONSTRUCTION CONTRACT.	6. MAP PROJECTION: NAD 1983 HUAN STATE PLANE FLORIDA EAST FIPS 0801 FEET. VERTICAL DATUM: NAD 83.	NO.	DESCRIPTION	DATE	REV BY	CHK BY	APP BY	DRAWN BY	MB	CONSTRUCTION PERMIT NO.	
1	2343	FT			36" O.D. x 0.5300 W.C. API 5L X70 F152, FBZL, DSW, 14-18 MLS FBE		SET ON WEIGHTS							1	IFC (UPDATE ENV. RE-ROUTES, FOOT-PRINT)	2016-04-08	MB	MJ	RG	RG	PROJECT MANAGER	MAINTENANCE OPERATION REGION	
2	5023	FT			36" O.D. x 0.625 W.C. API 5L X70 F152, DSW, 14-18 MLS FBE		PIPELINE MARKERS							0	ISSUED FOR CONSTRUCTION	2015-12-15	MB	MJ	RG	RG	PROJECT DEF. NO.	MIN. TEST PRESSURE 1816 PSI	
3	658	FT			36" O.D. x 0.750 W.C. API 5L X70 F152, DSW, 14-18 MLS FBE		WARNING SIGNS															DESIGN PRESSURE 1440 PSI	
FITTINGS SUMMARY		CONTINUOUS CONCRETE COATING		PIPE COATING DATA		SPECIAL NOTES		ENVIRONMENTAL DATA		REVISIONS		APPROVALS											
1	2	EA			80" 3R HORIZONTAL FITTING		7" OF CONTINUOUS CONCRETE COATING (140 PCF DENSITY CONCRETE)																
1	2	EA			PIPE COATING: 14 MIL MINIMUM FBE AND 24 MIL MINIMUM ARO		INTERNAL COATING (YES/NO): NO																

FLORIDA SOUTHEAST CONNECTION PROJECT

FLORIDA SOUTHEAST CONNECTION ALIGNMENT SHEET 1 POLK COUNTY, FLORIDA

SCALE: 1" = 200' 21040-510-ALS-00013 REV. 1

SHEET 13

