

SURVEY DATA		STATIONING	
MATCHLINE 3750+00		MATCHLINE 3800+00	
MATCHLINE 3750+00		MATCHLINE 3800+00	

ENGINEERING DATA		MATERIAL	
MATCHLINE 3750+00		MATCHLINE 3800+00	
MATCHLINE 3750+00		MATCHLINE 3800+00	

ENVIRONMENTAL DATA		STATIONS	
MATCHLINE 3750+00		MATCHLINE 3800+00	
MATCHLINE 3750+00		MATCHLINE 3800+00	

BILL OF MATERIALS				MISCELLANEOUS MATERIALS				TYPICAL DRAWINGS				GENERAL INFORMATION			
ITEM NO.	QTY	UOM	DESCRIPTION	QTY	UOM	REIN. NUMBER	DESCRIPTION	DWG/FIELD BOOK NO.	TITLE	1. THE MINIMUM DEPTH OF COVER FOR THE PROJECT IS 36 INCHES. ADDITIONAL DEPTH OF COVER IS REQUIRED FOR ROAD AND WATERBODY CROSSINGS, AND IS TO BE IN ACCORDANCE WITH REFERENCED PERMIT DRAWINGS, SITE SPECIFIC DRAWINGS, OR CONSTRUCTION SPECIFICATIONS, WHICHEVER IS MORE STRINGENT.					
1	4973	FT	36" O.D. x 0.5200 W.T. API 5L X70 F82, DSAW, 14-16 MILS FBE	0	EA		SET ON WEIGHTS	21040-510-TYP-2001	CATHODIC PROTECTION STD. SINGLE POINT TEST STATION, TYPE 1	2. THE BOUNDARIES OF ALL WORK AREAS WILL BE CLEARLY MARKED AND ALL WORK SHALL REMAIN WITHIN THE DESIGNATED WORK AREA.					
2	26	FT	36" O.D. x 0.7500 W.T. API 5L X70 F82, DSAW, 14-16 MILS FBE	1	EA		WARNING SIGNS	21040-510-TYP-2002	CATHODIC PROTECTION STD. FOREIGN PIPELINE CROSSING TEST STATION, TYPE 2	3. THE REQUIRED STATE ONE CALL NOTIFICATION IS THE RESPONSIBILITY OF THE CONSTRUCTION CONTRACTOR.					
				2	EA		CP TEST STATION TYPE 1	21040-510-TYP-2003	CATHODIC PROTECTION STD. FOREIGN PIPELINE CROSSING TEST STATION, TYPE 2	4. THE CONTRACTOR SHALL ACCESS THE WORK AREA USING ONLY PUBLIC ROADS AND APPROVED ACCESS ROADS.					
				3	EA		CP TEST STATION TYPE 2	21040-510-TYP-2004	CONTINUOUS CONCRETE COATING STANDARD FOR 36"/30" PIPELINE	5. ADDITIONAL WARNING SIGNS MAY BE REQUIRED AS DETERMINED BY THE CONSTRUCTION CONTRACTOR.					
				4	EA		AERIAL MARKERS	21040-510-TYP-2011	TYPICAL SADDLE BAG WEIGHTS	6. MAP PROJECTION: NAD 1983 HARN STATE PLANE FLORIDA EAST FIPS 0801 FEET, VERTICAL DATUM: NAD 83.					
				5	EA		ANODE BED DEEP WELL	21040-510-TYP-2012	CONTINUOUS CONCRETE COATING STANDARD FOR 36"/30" PIPELINE	SPECIAL NOTES					
				6	EA			21040-510-TYP-2013	CONTINUOUS CONCRETE COATING STANDARD FOR 36"/30" PIPELINE	1. INDUCTION BEND QUANTITIES ALONG WITH THEIR DESCRIPTIONS ARE LOCATED ON DRAWING 21040-SG-EW-00001.					
				7	EA			21040-510-TYP-2014	CONTINUOUS CONCRETE COATING STANDARD FOR 36"/30" PIPELINE	2. A "SEE ARK DRAWING PACKAGE FOR ANODE BED DEEP WELL".					
				8	EA			21040-510-TYP-2015	AERIAL MARKER INSTALLATION DETAIL						
				9	EA			21040-510-TYP-2016	AERIAL MARKER DETAIL						
				10	EA			21040-510-TYP-2017	TYPICAL PIPELINE MARKER ASSEMBLY						
				11	EA			21040-510-TYP-2018	PIPELINE MARKER "WARNING" DECAL						

FITTINGS SUMMARY				CONTINUOUS CONCRETE COATING			
ITEM NO.	QTY	UOM	DESCRIPTION	QTY	UOM	REIN. NUMBER	DESCRIPTION
				PIPE COATING DATA			
				PIPE COATING: 14 MIL MINIMUM FBE AND 24 MIL MINIMUM ARO			
				SOUTH WELD COATING: 2 PART EPOXY			
				INTERNAL COATING (YES/NO): NO			

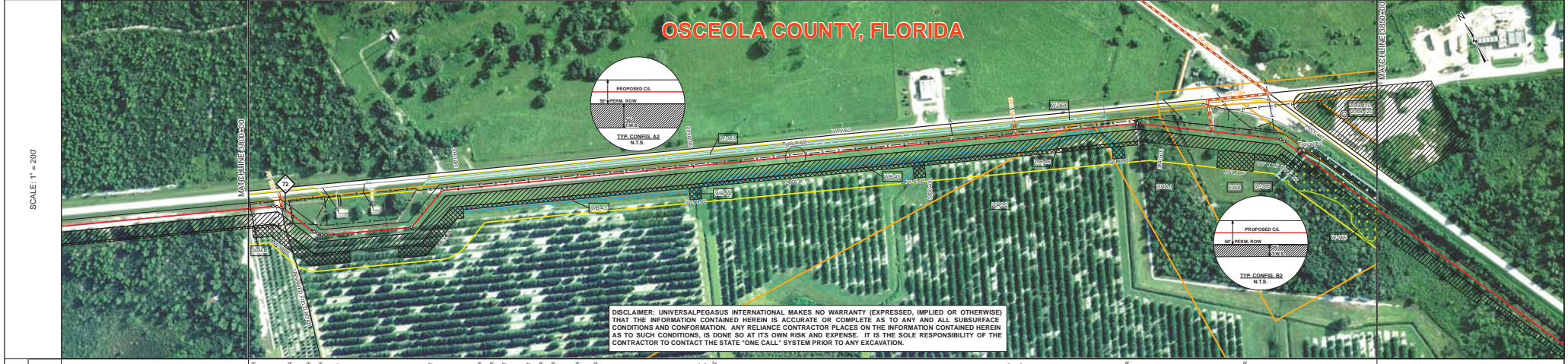
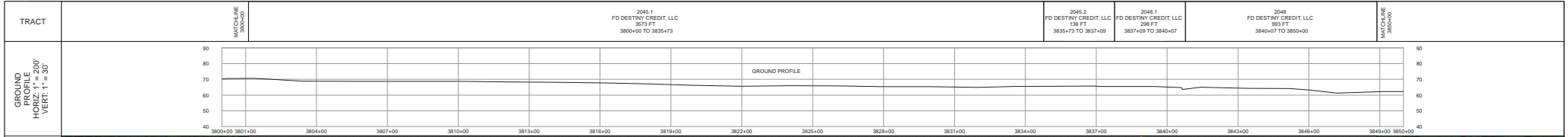
LEGEND				REVISIONS				APPROVALS																																																																					
<ul style="list-style-type: none"> PIPELINE ROUTE EDGE PIPE LINE PIPE IN ROW HWY INDUCTION BEND TRANSITION PIPE CONC CONC. GRAB SET ON WEIGHTS VERTICAL PIPE MATERIAL ITEM AERIAL MARKER CP TEST STATION CP TEST STATION (BY CIV) PIPELINE MARKER PIPELINE WELD JOINT ANODE BED DEEP WELL 				<ul style="list-style-type: none"> FORWARD WETLAND WATERBODY FOREIGN PIPELINE FOREIGN WELLY FOREIGN ROAD INDUCTION BEND ROW BOUNDARY PLUS SECTION LINE TRAP WATER WELL ANODE ENTRY / EXIT 				<ul style="list-style-type: none"> PERMITTING SIGN TEMPORARY WARNING SIGN ADDITIONAL TEMPORARY WARNING SIGN NON-FORWARDED WETLAND FORWARDED WETLAND WATERBODY SHOULDER BUFFER (POST FEET) ROAD BOUNDARY WELLY/WATERBODY ROCKERY TYPICAL JERIAL CORNER RIGHT OF INTERSECTION VERTICAL FITTING SPREAD BEAMA ENVIRONMENTAL SURVEY AREA 																																																																					
<table border="1"> <thead> <tr> <th>NO.</th> <th>DESCRIPTION</th> <th>DATE</th> <th>REV BY</th> <th>CHK BY</th> <th>APP BY</th> </tr> </thead> <tbody> <tr> <td>1</td> <td>IFC (UPDATE ENV. RE-ROUTES, FOOT-PRINT)</td> <td>2016-04-08</td> <td>MB</td> <td>MJ</td> <td>RG</td> </tr> <tr> <td>0</td> <td>ISSUED FOR CONSTRUCTION</td> <td>2015-12-15</td> <td>MB</td> <td>MJ</td> <td>RG</td> </tr> </tbody> </table>				NO.	DESCRIPTION	DATE	REV BY	CHK BY	APP BY	1	IFC (UPDATE ENV. RE-ROUTES, FOOT-PRINT)	2016-04-08	MB	MJ	RG	0	ISSUED FOR CONSTRUCTION	2015-12-15	MB	MJ	RG	<table border="1"> <thead> <tr> <th>NO.</th> <th>DESCRIPTION</th> <th>DATE</th> <th>REV BY</th> <th>CHK BY</th> <th>APP BY</th> </tr> </thead> <tbody> <tr> <td>1</td> <td>APPROVAL</td> <td></td> <td></td> <td></td> <td></td> </tr> </tbody> </table>				NO.	DESCRIPTION	DATE	REV BY	CHK BY	APP BY	1	APPROVAL					<table border="1"> <thead> <tr> <th>NO.</th> <th>DESCRIPTION</th> <th>DATE</th> <th>REV BY</th> <th>CHK BY</th> <th>APP BY</th> </tr> </thead> <tbody> <tr> <td>1</td> <td>CONSTRUCTION</td> <td></td> <td></td> <td></td> <td></td> </tr> <tr> <td>2</td> <td>PERMIT NO.</td> <td></td> <td></td> <td></td> <td></td> </tr> <tr> <td>3</td> <td>MAINTENANCE OPERATION REGION</td> <td></td> <td></td> <td></td> <td></td> </tr> <tr> <td>4</td> <td>MIN. TEST PRESSURE</td> <td>1816</td> <td>PSI</td> <td></td> <td></td> </tr> <tr> <td>5</td> <td>DESIGN PRESSURE</td> <td>1440</td> <td>PSI</td> <td></td> <td></td> </tr> </tbody> </table>				NO.	DESCRIPTION	DATE	REV BY	CHK BY	APP BY	1	CONSTRUCTION					2	PERMIT NO.					3	MAINTENANCE OPERATION REGION					4	MIN. TEST PRESSURE	1816	PSI			5	DESIGN PRESSURE	1440	PSI		
NO.	DESCRIPTION	DATE	REV BY	CHK BY	APP BY																																																																								
1	IFC (UPDATE ENV. RE-ROUTES, FOOT-PRINT)	2016-04-08	MB	MJ	RG																																																																								
0	ISSUED FOR CONSTRUCTION	2015-12-15	MB	MJ	RG																																																																								
NO.	DESCRIPTION	DATE	REV BY	CHK BY	APP BY																																																																								
1	APPROVAL																																																																												
NO.	DESCRIPTION	DATE	REV BY	CHK BY	APP BY																																																																								
1	CONSTRUCTION																																																																												
2	PERMIT NO.																																																																												
3	MAINTENANCE OPERATION REGION																																																																												
4	MIN. TEST PRESSURE	1816	PSI																																																																										
5	DESIGN PRESSURE	1440	PSI																																																																										

FLORIDA SOUTHEAST CONNECTION PROJECT
 STA. 3750+00 TO 3800+00
 DISCIPLINE: 03

FLORIDA SOUTHEAST CONNECTION
 ALIGNMENT SHEET
 OSCEOLA COUNTY, FLORIDA

SCALE: 1" = 200' 21040-510-ALS-00080 REV. 1

SHEET 80



STATIONING	MATERIAL	SURVEY DATA	
		STATIONING	MATERIAL
3800+00	MATCHLINE	3800+00	MATCHLINE
3801+00	3801+00	3801+00	3801+00
3802+00	3802+00	3802+00	3802+00
3803+00	3803+00	3803+00	3803+00
3804+00	3804+00	3804+00	3804+00
3805+00	3805+00	3805+00	3805+00
3806+00	3806+00	3806+00	3806+00
3807+00	3807+00	3807+00	3807+00
3808+00	3808+00	3808+00	3808+00
3809+00	3809+00	3809+00	3809+00
3810+00	3810+00	3810+00	3810+00
3811+00	3811+00	3811+00	3811+00
3812+00	3812+00	3812+00	3812+00
3813+00	3813+00	3813+00	3813+00
3814+00	3814+00	3814+00	3814+00
3815+00	3815+00	3815+00	3815+00
3816+00	3816+00	3816+00	3816+00
3817+00	3817+00	3817+00	3817+00
3818+00	3818+00	3818+00	3818+00
3819+00	3819+00	3819+00	3819+00
3820+00	3820+00	3820+00	3820+00
3821+00	3821+00	3821+00	3821+00
3822+00	3822+00	3822+00	3822+00
3823+00	3823+00	3823+00	3823+00
3824+00	3824+00	3824+00	3824+00
3825+00	3825+00	3825+00	3825+00
3826+00	3826+00	3826+00	3826+00
3827+00	3827+00	3827+00	3827+00
3828+00	3828+00	3828+00	3828+00
3829+00	3829+00	3829+00	3829+00
3830+00	3830+00	3830+00	3830+00
3831+00	3831+00	3831+00	3831+00
3832+00	3832+00	3832+00	3832+00
3833+00	3833+00	3833+00	3833+00
3834+00	3834+00	3834+00	3834+00
3835+00	3835+00	3835+00	3835+00
3836+00	3836+00	3836+00	3836+00
3837+00	3837+00	3837+00	3837+00
3838+00	3838+00	3838+00	3838+00
3839+00	3839+00	3839+00	3839+00
3840+00	3840+00	3840+00	3840+00
3841+00	3841+00	3841+00	3841+00
3842+00	3842+00	3842+00	3842+00
3843+00	3843+00	3843+00	3843+00
3844+00	3844+00	3844+00	3844+00
3845+00	3845+00	3845+00	3845+00
3846+00	3846+00	3846+00	3846+00
3847+00	3847+00	3847+00	3847+00
3848+00	3848+00	3848+00	3848+00
3849+00	3849+00	3849+00	3849+00
3850+00	MATCHLINE	3850+00	MATCHLINE

BILL OF MATERIALS				MISCELLANEOUS MATERIALS				TYPICAL DRAWINGS				GENERAL INFORMATION																																			
ITEM NO.	QTY	UOM	DESCRIPTION	QTY	UOM	DESCRIPTION	DWG/FIELD BOOK NO.	TITLE	1. THE MINIMUM DEPTH OF COVER FOR THE PROJECT IS 36 INCHES. ADDITIONAL DEPTH OF COVER IS REQUIRED FOR ROAD AND WATERBODY CROSSINGS, AND IS TO BE IN ACCORDANCE WITH REFERENCED PERMIT DRAWINGS, SITE SPECIFIC DRAWINGS, OR CONSTRUCTION SPECIFICATIONS, WHICHEVER IS MORE STRINGENT.	2. THE BOUNDARIES OF ALL WORK AREAS WILL BE CLEARLY MARKED AND ALL WORK SHALL REMAIN WITHIN THE DESIGNATED WORK AREA.	3. THE REQUIRED STATE ONE CALL NOTIFICATION IS THE RESPONSIBILITY OF THE CONSTRUCTION CONTRACTOR.	4. THE CONTRACTOR SHALL ACCESS THE WORK AREA USING ONLY PUBLIC ROADS AND APPROVED ACCESS ROADS.	5. ADDITIONAL WARNING SIGNS MAY BE REQUIRED AS DICTATED BY CONSTRUCTION CONTRACT.	6. MAP PROJECTION: NAD 1983 HARN STATE PLANE FLORIDA EAST TIPS 0801 FEET, VERTICAL DATUM: NAVD 83.																																	
1	5000	FT	36" O.D. x 0.750" W.T., API 5L X70, FBEL, DSWW, 14-16 MILS FBE																																												
<table border="1"> <thead> <tr> <th>ITEM NO.</th> <th>QTY</th> <th>UOM</th> <th>DESCRIPTION</th> </tr> </thead> <tbody> <tr> <td>1</td> <td>2</td> <td>EA</td> <td>48" 38 HORIZONTAL FITTING</td> </tr> </tbody> </table>				ITEM NO.	QTY	UOM	DESCRIPTION	1	2	EA	48" 38 HORIZONTAL FITTING	<table border="1"> <thead> <tr> <th>ITEM NO.</th> <th>QTY</th> <th>UOM</th> <th>DESCRIPTION</th> </tr> </thead> <tbody> <tr> <td>1</td> <td>2</td> <td>EA</td> <td>48" 38 HORIZONTAL FITTING</td> </tr> </tbody> </table>				ITEM NO.	QTY	UOM	DESCRIPTION	1	2	EA	48" 38 HORIZONTAL FITTING	<table border="1"> <thead> <tr> <th>ITEM NO.</th> <th>QTY</th> <th>UOM</th> <th>DESCRIPTION</th> </tr> </thead> <tbody> <tr> <td>1</td> <td>2</td> <td>EA</td> <td>48" 38 HORIZONTAL FITTING</td> </tr> </tbody> </table>				ITEM NO.	QTY	UOM	DESCRIPTION	1	2	EA	48" 38 HORIZONTAL FITTING	<table border="1"> <thead> <tr> <th>ITEM NO.</th> <th>QTY</th> <th>UOM</th> <th>DESCRIPTION</th> </tr> </thead> <tbody> <tr> <td>1</td> <td>2</td> <td>EA</td> <td>48" 38 HORIZONTAL FITTING</td> </tr> </tbody> </table>				ITEM NO.	QTY	UOM	DESCRIPTION	1	2	EA	48" 38 HORIZONTAL FITTING
ITEM NO.	QTY	UOM	DESCRIPTION																																												
1	2	EA	48" 38 HORIZONTAL FITTING																																												
ITEM NO.	QTY	UOM	DESCRIPTION																																												
1	2	EA	48" 38 HORIZONTAL FITTING																																												
ITEM NO.	QTY	UOM	DESCRIPTION																																												
1	2	EA	48" 38 HORIZONTAL FITTING																																												
ITEM NO.	QTY	UOM	DESCRIPTION																																												
1	2	EA	48" 38 HORIZONTAL FITTING																																												

LEGEND

- PIPELINE ROUTE
- FENCE
- POWER LINE
- ROAD
- WATERLINE
- SEWER LINE
- UTILITY LINE
- GENERAL ALIENWAY
- FORWARD ROAD
- PARALLEL ACCESS ROAD
- ROW PARCEL
- PLS SECTION LINE
- TRAP
- WATER WELL
- NOV ENTRY / EXIT

REVISIONS

NO.	DESCRIPTION	DATE	REV BY	CHK BY	APP BY
1	IFC (UPDATE ENV. RE ROUTES, FOOTPRINT)	2016-04-08	MB	MJ	RG
0	ISSUED FOR CONSTRUCTION	2015-12-15	MB	MJ	RG

APPROVALS

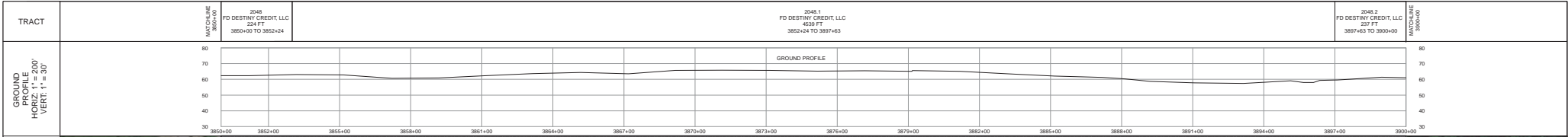
UNIVERSALPEGASUS INTERNATIONAL

FLORIDA SOUTHEAST CONNECTION

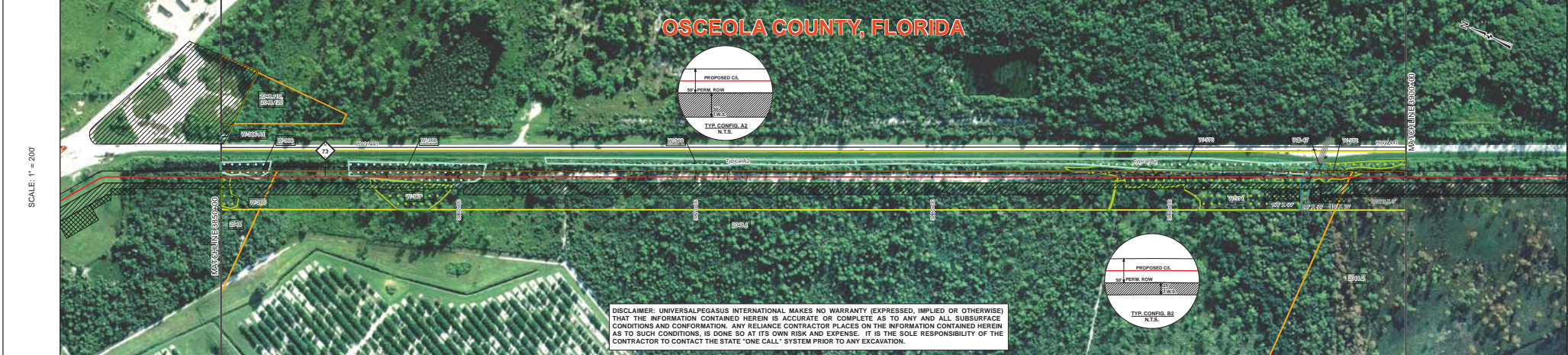
FLORIDA SOUTHEAST CONNECTION PROJECT

21040-510-ALS-00081

SCALE: 1" = 200'



OSCEOLA COUNTY, FLORIDA



DISCLAIMER: UNIVERSALPEGASUS INTERNATIONAL MAKES NO WARRANTY (EXPRESSED, IMPLIED OR OTHERWISE) THAT THE INFORMATION CONTAINED HEREIN IS ACCURATE OR COMPLETE AS TO ANY AND ALL SUBSURFACE CONDITIONS AND CONFORMATION. ANY RELIANCE CONTRACTOR PLACES ON THE INFORMATION CONTAINED HEREIN AS TO SUCH CONDITIONS, IS DONE SO AT ITS OWN RISK AND EXPENSE. IT IS THE SOLE RESPONSIBILITY OF THE CONTRACTOR TO CONTACT THE STATE "ONE CALL" SYSTEM PRIOR TO ANY EXCAVATION.

SURVEY DATA		STATIONING		MATCHLINE	
				3850+00	3900+00

ENGINEERING DATA		MATERIAL		MATCHLINE	
		3850+00	3900+00	3850+00	3900+00
REFERENCE DRAWING		17.8K2 SBW	45.8W1 SBW		
CLASS LOCATION		13.5 CC	13.5 CC		
MINIMUM DEPTH OF COVER					
CATHODIC PROTECTION					
INTERDIPOLE WETLAND CROSSINGS					
INTERDIPOLE WETLAND LENGTH					
ENVIRONMENTAL DATA					
PERMIT/REGULATORY CONTROL					
THREATENED AND ENDANGERED SPECIES					
SPECIAL CONDITIONS					

BILL OF MATERIALS		MISCELLANEOUS MATERIALS		TYPICAL DRAWINGS		GENERAL INFORMATION	
ITEM NO.	QTY	UOM	REIN. NUMBER	MATERIAL NUMBER	DESCRIPTION	DWG/FIELD BOOK NO.	TITLE
1	1500	FT			36" O.D. x 0.5300 W.T. - APRIL 2010, P&L, DRAW, 14-16 M.L.S. FBE	21040-510-TYP-20001	CATHODIC PROTECTION STD. SINGLE POINT TEST STATION, TYPE 1
2	5490	FT			36" O.D. x 0.7500 W.T. - APRIL 2010, P&L, DRAW, 14-16 M.L.S. FBE	21040-510-TYP-20002	CATHODIC PROTECTION STD. FOREIGN PIPELINE CROSSING TEST STATION, TYPE 2
						21040-510-TYP-20003	CATHODIC PROTECTION STD. FOREIGN PIPELINE CROSSING TEST STATION, TYPE 2
						21040-510-TYP-20009	TYPICAL OPEN CUT / BORE
						21040-510-TYP-20112	CONTINUOUS CONCRETE COATING STANDARD FOR 36"/30" PIPELINE
						21040-510-TYP-20113	TYPICAL SADDLE BAG WEIGHTS
						21040-510-TYP-20114	WARNING SIGN DETAIL
						21040-510-TYP-20115	AERIAL MARKER INSTALLATION DETAIL
						21040-510-TYP-20117	TYPICAL PIPELINE-MARKER ASSEMBLY
						21040-510-TYP-20118	PIPELINE MARKER "WARNING" DECAL

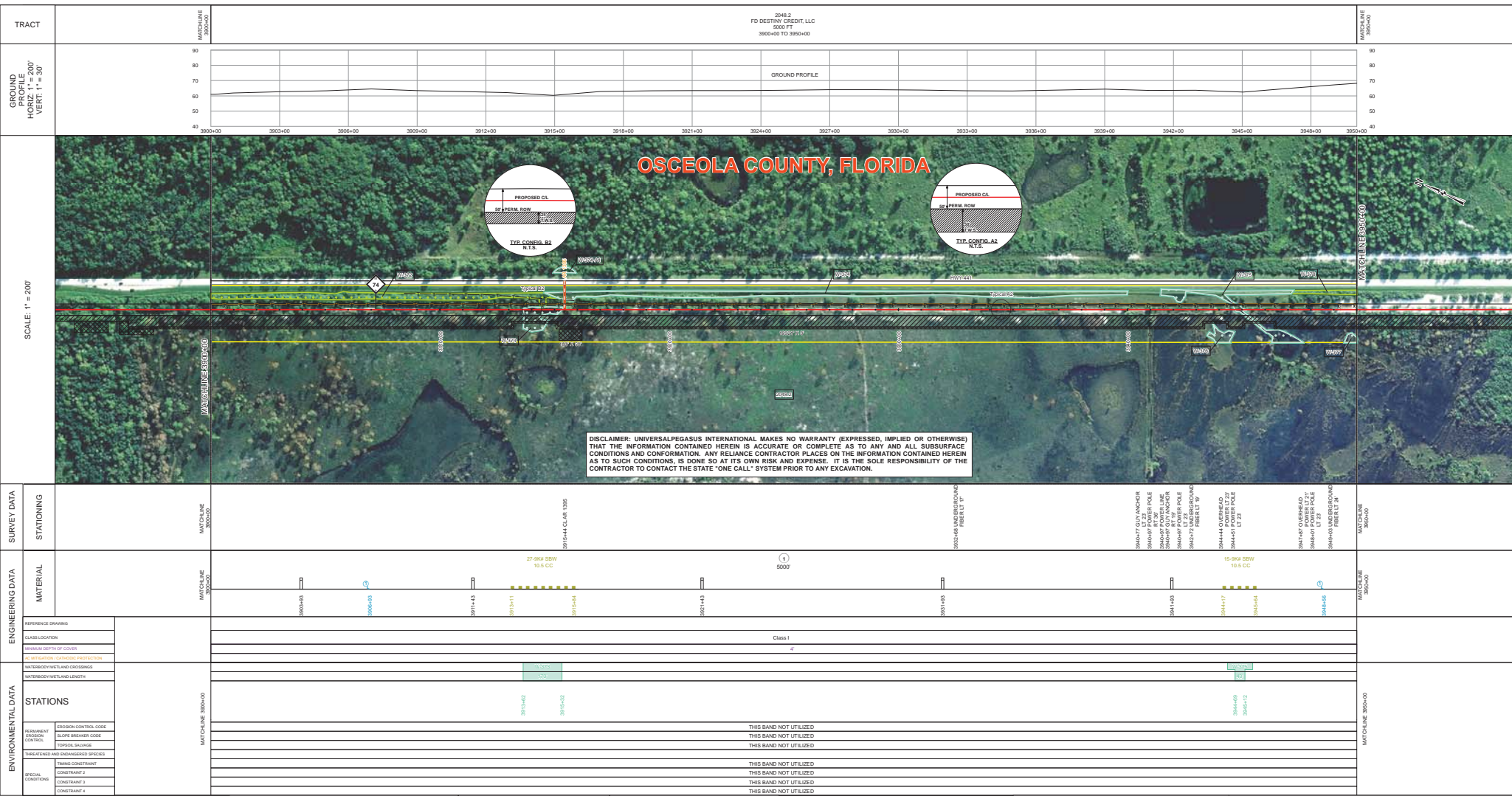
FITTINGS SUMMARY		CONTINUOUS CONCRETE COATING		PIPE COATING DATA	
ITEM NO.	QTY	UOM	REIN. NUMBER	MATERIAL NUMBER	DESCRIPTION
					PIPE COATING: 14 MIL MINIMUM FBE AND 24 MIL MINIMUM ARO
					SOFT WELD COATING: 2 PART EPOXY
					INTERNAL COATING (YES/NO): NO

REVISIONS			APPROVALS		
NO.	DESCRIPTION	DATE	REV. BY	CHK. BY	APP. BY
1	IFC (UPDATE ENV. RE-ROUTES, FOOT-PRINT)	2016-04-08	MB	MJ	RG
2	ISSUED FOR CONSTRUCTION	2015-12-15	MB	MJ	RG
APPROVAL			COMPANY		
ENVIRONMENTAL			LAND		
APPROVAL			COMPANY		

2048 J
FD DESTINY CREDIT, LLC
6205 FT
3900+00 TO 3955+00

OSCEOLA COUNTY, FLORIDA

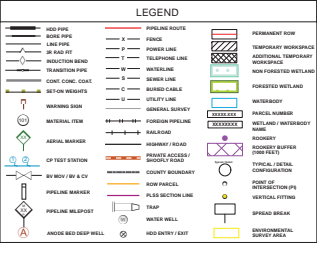
DISCLAIMER: UNIVERSALPEGASUS INTERNATIONAL MAKES NO WARRANTY (EXPRESSED, IMPLIED OR OTHERWISE) THAT THE INFORMATION CONTAINED HEREIN IS ACCURATE OR COMPLETE AS TO ANY AND ALL SUBSURFACE CONDITIONS AND CONFORMATION. ANY RELIANCE CONTRACTOR PLACES ON THE INFORMATION CONTAINED HEREIN AS TO SUCH CONDITIONS, IS DONE SO AT ITS OWN RISK AND EXPENSE. IT IS THE SOLE RESPONSIBILITY OF THE CONTRACTOR TO CONTACT THE STATE 'ONE CALL' SYSTEM PRIOR TO ANY EXCAVATION.



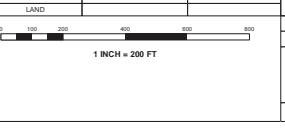
STATIONING			MATERIAL			STATIONS		
27+98.4 10.5 CC			5000'			27+98.4 10.5 CC		
27+98.4 10.5 CC			5000'			27+98.4 10.5 CC		
27+98.4 10.5 CC			5000'			27+98.4 10.5 CC		

BILL OF MATERIALS		MISCELLANEOUS MATERIALS		TYPICAL DRAWINGS		GENERAL INFORMATION	
ITEM NO.	QTY UOM	REYN. NUMBER	MATERIAL NUMBER	DESCRIPTION	DWG/FIELD BOOK NO.	TITLE	DESCRIPTION
1	5000 FT			36" O.D. x 0.530" W.T. API 5L X70 F152 B2/M, 14-16 MILS FBE			
SPECIAL NOTES 1. THE MINIMUM DEPTH OF COVER FOR THE PROJECT IS 36 INCHES. ADDITIONAL DEPTH OF COVER IS REQUIRED FOR ROAD AND WATERBODY CROSSINGS, AND IS TO BE IN ACCORDANCE WITH REFERENCED PERMIT DRAWINGS, SITE SPECIFIC DRAWINGS, OR CONSTRUCTION SPECIFICATIONS, WHICHEVER IS MORE STRINGENT. 2. THE BOUNDARIES OF ALL WORK AREAS WILL BE CLEARLY MARKED AND ALL WORK SHALL REMAIN WITHIN THE DESIGNATED WORK AREA. 3. THE REQUIRED STATE 'ONE CALL' NOTIFICATION IS THE RESPONSIBILITY OF THE CONSTRUCTION CONTRACTOR. 4. THE CONTRACTOR SHALL ACCESS THE WORK AREA USING ONLY PUBLIC ROADS AND APPROVED ACCESS ROADS. 5. ADDITIONAL WARNING SIGNS MAY BE REQUIRED AS DICTATED BY CONSTRUCTION CONTRACT. 6. MAP PROJECTION: NAD 1983 HARN STATE PLANE FLORIDA EAST FIPS 9801 FEET, VERTICAL DATUM: NAVD 83.							

FITTINGS SUMMARY			CONTINUOUS CONCRETE COATING			PIPE COATING DATA		
ITEM NO.	QTY UOM	REYN. NUMBER	MATERIAL NUMBER	DESCRIPTION	QTY UOM	REYN. NUMBER	MATERIAL NUMBER	DESCRIPTION
PIPE COATING DATA PIPE COATING: 14 MIL MINIMUM FBE AND 24 MIL MINIMUM ARO SURFACE WELD COATING: 2 PART EPOXY INTERNAL COATING (YES/NO): NO								



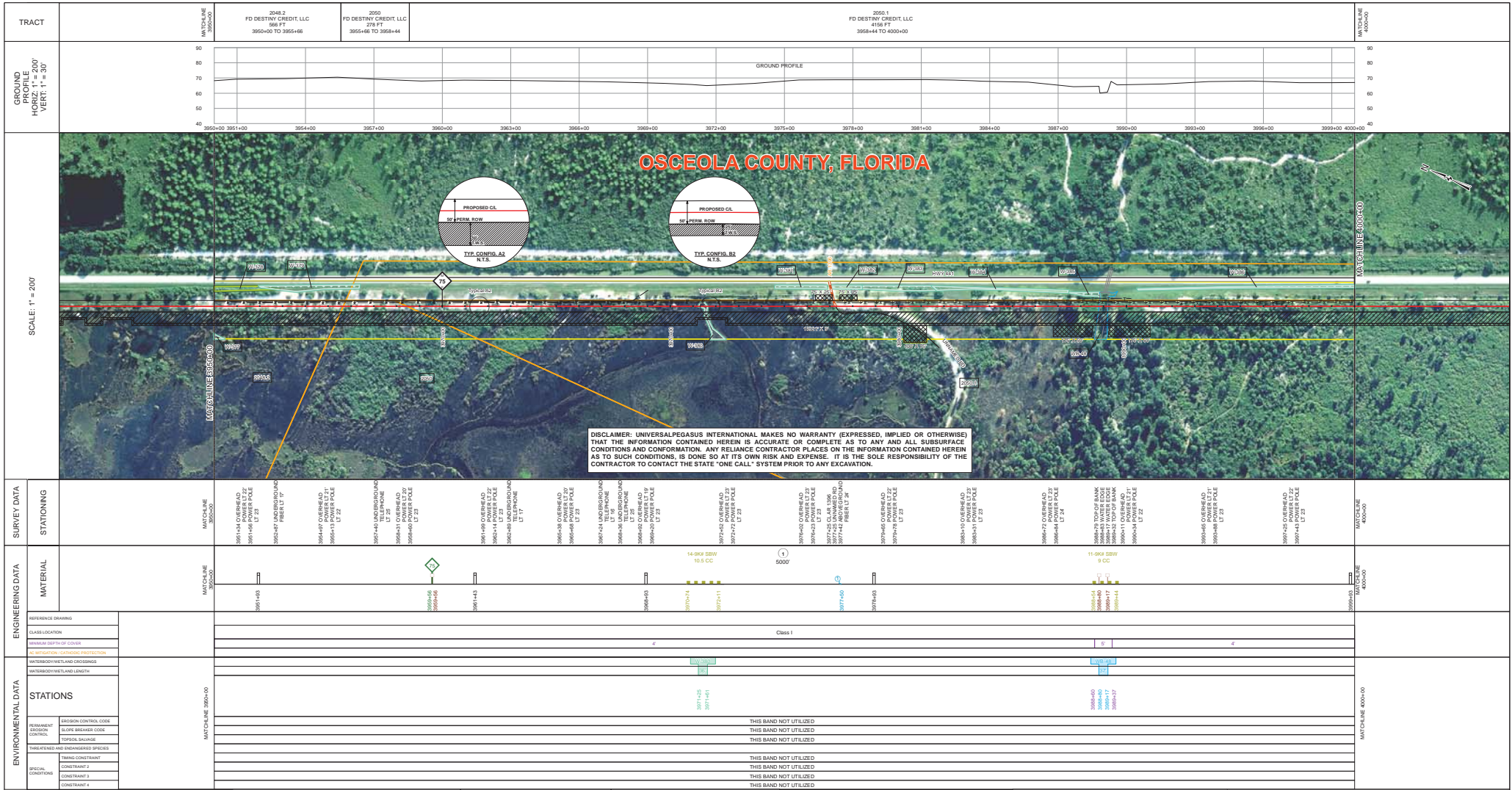
REVISIONS				APPROVALS			
NO.	DESCRIPTION	DATE	REV BY	APP BY	MB	CONSTRUCTION PERMIT NO.	DESIGNER
1	IFC (UPDATE ENV. RE-ROUTES, FOOT-PRINT)	2016-04-08	MB	MJ	MB	MJ	MJ
0	ISSUED FOR CONSTRUCTION	2015-12-15	MB	MJ	MB	MJ	MJ



FLORIDA SOUTHEAST CONNECTION PROJECT
 STA. 3900+00 TO 3955+00
 DISCIPLINE: 03

FLORIDA SOUTHEAST CONNECTION
 ALIGNMENT SHEET 1
 OSCEOLA COUNTY, FLORIDA

SCALE: 1" = 200'
 21040-510-ALS-00083
 REV. 1



ITEM NO.		QTY	UOM	REIN. NUMBER	MATERIAL NUMBER	DESCRIPTION
1		5000	FT			36" O.D. x 0.530" W.T. API 5L X70 F152, BSW, 14-16 MILS FBE

ITEM NO.		QTY	UOM	REIN. NUMBER	MATERIAL NUMBER	DESCRIPTION
1			EA			SET ON WEIGHTS
2			EA			PIPELINE MARKERS
3			EA			WARNING SIGNS
4			EA			CP TEST STATION TYPE 1
5			EA			CP TEST STATION TYPE 2
6			EA			AERIAL MARKERS
7			EA			ANODE BED DEEP WELL

ITEM NO.		QTY	UOM	REIN. NUMBER	MATERIAL NUMBER	DESCRIPTION
1			EA			CONTINUOUS CONCRETE COATING STANDARD FOR 36"/30" PIPELINE
2			EA			TYPICAL SADDLE BAG WEIGHTS
3			EA			WARNING SIGN DETAIL
4			EA			AERIAL MARKER INSTALLATION DETAIL
5			EA			AERIAL MARKER DETAIL
6			EA			TYPICAL PIPELINE-MARKER ASSEMBLY
7			EA			PIPELINE MARKER "WARNING" DECAL

ITEM NO.		QTY	UOM	REIN. NUMBER	MATERIAL NUMBER	DESCRIPTION
1			EA			PIPE COATING: 14 MIL MINIMUM FBE AND 24 MIL MINIMUM ARO
2			EA			SMITH WELD COATING: 2 PART EPOXY
3			EA			INTERNAL COATING (YES/NO): NO

ITEM NO.		QTY	UOM	REIN. NUMBER	MATERIAL NUMBER	DESCRIPTION
1			EA			PIPELINE ROUTE
2			EA			FENCE
3			EA			POWER LINE
4			EA			TELEPHONE LINE
5			EA			WATERLINE
6			EA			SEWER LINE
7			EA			BURIED CABLE
8			EA			UTILITY LINE
9			EA			GENERAL PIPELINE
10			EA			GENERAL HIGHWAY
11			EA			RAILROAD
12			EA			PARALLEL ACCESS/ROAD CROSSING
13			EA			PLUS SECTION LINE
14			EA			ROAD PARCEL
15			EA			COUNTY BOUNDARY
16			EA			ROW PARCEL
17			EA			TRAP
18			EA			WATER WELL
19			EA			HOOD ENTRY/EXIT
20			EA			ANODE BED DEEP WELL

NO.		DESCRIPTION	DATE	REV. BY	CHK. BY	APP. BY
1	IFC (UPDATE ENV. RE-ROUTES, FOOT-PRINT)	2016-04-08	MB	MJ	RG	
2	ISSUED FOR CONSTRUCTION	2015-12-15	MB	MJ	RG	

DRAWN BY		CHECKED BY		PROJECT MANAGER		CONSTRUCTION PERMIT NO.	
MB	MJ	RG	RG	RG	RG		

APPROVALS	
 Universal Pegasus INTERNATIONAL <small>A Subsidiary of Fluor Daniel Health Solutions</small>	 FLORIDA SOUTHEAST CONNECTION

ENVIRONMENTAL DATA	
REQUIREMENT	STATUS
EROSION CONTROL CODE	THIS BAND NOT UTILIZED
BULKY DEBRIS CODE	THIS BAND NOT UTILIZED
TOPSOIL SALVAGE	THIS BAND NOT UTILIZED
THREATENED AND ENDANGERED SPECIES	THIS BAND NOT UTILIZED
TRADING CONSTRAINT	THIS BAND NOT UTILIZED
CONSTRAINT 1	THIS BAND NOT UTILIZED
CONSTRAINT 2	THIS BAND NOT UTILIZED
CONSTRAINT 3	THIS BAND NOT UTILIZED
CONSTRAINT 4	THIS BAND NOT UTILIZED

BILL OF MATERIALS		MISCELLANEOUS MATERIALS		TYPICAL DRAWINGS		GENERAL INFORMATION	
ITEM NO.	DESCRIPTION	QTY	UOM	REIN. NUMBER	MATERIAL NUMBER	DESCRIPTION	
1	36" O.D. x 0.530" W.T. API 5L X70 F152, BSW, 14-16 MILS FBE	5000	FT				

FITTINGS SUMMARY		CONTINUOUS CONCRETE COATING		PIPE COATING DATA		
ITEM NO.	DESCRIPTION	QTY	UOM	REIN. NUMBER	MATERIAL NUMBER	DESCRIPTION
1	CONTINUOUS CONCRETE COATING STANDARD FOR 36"/30" PIPELINE		EA			
2	TYPICAL SADDLE BAG WEIGHTS		EA			
3	WARNING SIGN DETAIL		EA			
4	AERIAL MARKER INSTALLATION DETAIL		EA			
5	AERIAL MARKER DETAIL		EA			
6	TYPICAL PIPELINE-MARKER ASSEMBLY		EA			
7	PIPELINE MARKER "WARNING" DECAL		EA			

PIPE ASSEMBLIES		
QTY	UOM	DESCRIPTION
		PIPE COATING: 14 MIL MINIMUM FBE AND 24 MIL MINIMUM ARO
		SMITH WELD COATING: 2 PART EPOXY
		INTERNAL COATING (YES/NO): NO

REVISIONS					
NO.	DESCRIPTION	DATE	REV. BY	CHK. BY	APP. BY
1	IFC (UPDATE ENV. RE-ROUTES, FOOT-PRINT)	2016-04-08	MB	MJ	RG
2	ISSUED FOR CONSTRUCTION	2015-12-15	MB	MJ	RG

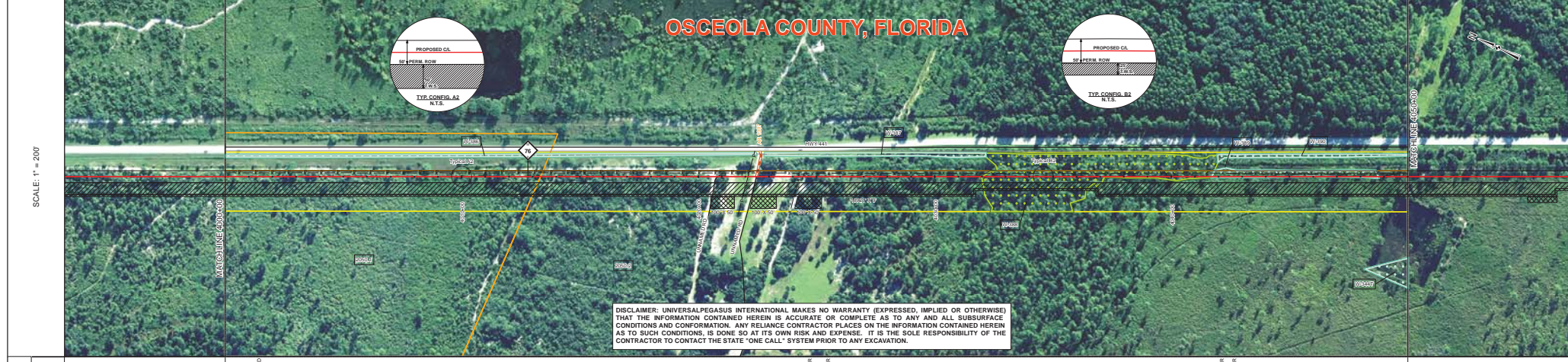
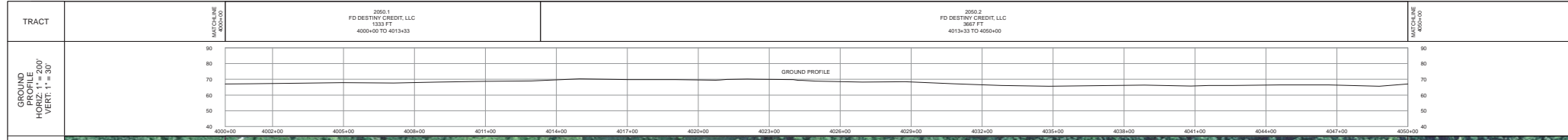
APPROVALS	
 Universal Pegasus INTERNATIONAL <small>A Subsidiary of Fluor Daniel Health Solutions</small>	 FLORIDA SOUTHEAST CONNECTION

ENVIRONMENTAL DATA	
REQUIREMENT	STATUS
EROSION CONTROL CODE	THIS BAND NOT UTILIZED
BULKY DEBRIS CODE	THIS BAND NOT UTILIZED
TOPSOIL SALVAGE	THIS BAND NOT UTILIZED
THREATENED AND ENDANGERED SPECIES	THIS BAND NOT UTILIZED
TRADING CONSTRAINT	THIS BAND NOT UTILIZED
CONSTRAINT 1	THIS BAND NOT UTILIZED
CONSTRAINT 2	THIS BAND NOT UTILIZED
CONSTRAINT 3	THIS BAND NOT UTILIZED
CONSTRAINT 4	THIS BAND NOT UTILIZED

BILL OF MATERIALS		MISCELLANEOUS MATERIALS		TYPICAL DRAWINGS		GENERAL INFORMATION	
ITEM NO.	DESCRIPTION	QTY	UOM	REIN. NUMBER	MATERIAL NUMBER	DESCRIPTION	
1	36" O.D. x 0.530" W.T. API 5L X70 F152, BSW, 14-16 MILS FBE	5000	FT				

FITTINGS SUMMARY		CONTINUOUS CONCRETE COATING		PIPE COATING DATA		
ITEM NO.	DESCRIPTION	QTY	UOM	REIN. NUMBER	MATERIAL NUMBER	DESCRIPTION
1	CONTINUOUS CONCRETE COATING STANDARD FOR 36"/30" PIPELINE		EA			
2	TYPICAL SADDLE BAG WEIGHTS		EA			
3	WARNING SIGN DETAIL		EA			
4	AERIAL MARKER INSTALLATION DETAIL		EA			
5	AERIAL MARKER DETAIL		EA			
6	TYPICAL PIPELINE-MARKER ASSEMBLY		EA			
7	PIPELINE MARKER "WARNING" DECAL		EA			

PIPE ASSEMBLIES		
QTY	UOM	DESCRIPTION
		PIPE COATING: 14 MIL MINIMUM FBE AND 24 MIL MINIMUM ARO
		SMITH WELD COATING: 2 PART EPOXY
		INTERNAL COATING (YES/NO): NO



DISCLAIMER: UNIVERSALPEGASUS INTERNATIONAL MAKES NO WARRANTY (EXPRESSED, IMPLIED OR OTHERWISE) THAT THE INFORMATION CONTAINED HEREIN IS ACCURATE OR COMPLETE AS TO ANY AND ALL SUBSURFACE CONDITIONS AND CONFORMATION. ANY RELIANCE CONTRACTOR PLACES ON THE INFORMATION CONTAINED HEREIN AS TO SUCH CONDITIONS, IS DONE SO AT ITS OWN RISK AND EXPENSE. IT IS THE SOLE RESPONSIBILITY OF THE CONTRACTOR TO CONTACT THE STATE "ONE CALL" SYSTEM PRIOR TO ANY EXCAVATION.

SURVEY DATA		STATIONING	
TRACT	2099.1 FD DESTINY CREDIT, LLC 1333 FT 4000+00 TO 4013+33	2099.2 FD DESTINY CREDIT, LLC 3627 FT 4013+33 TO 4050+00	MATCHLINE 4000+00
ENGINEERING DATA		MATERIAL	
REFERENCE DRAWING		MATERIAL	MATCHLINE 4000+00
CLASS LOCATION			
MINIMUM DEPTH OF COVER	4		
CL-BITUMEN CATHODIC PROTECTION			
ENVIRONMENTAL DATA		STATIONS	
WATERBODIES/WETLAND CROSSINGS			
WATERBODIES/WETLAND AVOIDANCE			
PERMITTING			
EROSION CONTROL CODE			
SLURRY BEHINDER CODE			
TOPSOIL SALVAGE			
THREATENED AND ENDANGERED SPECIES			
TRUCK CONSTRAINT			
CONSTRAINT 1			
CONSTRAINT 2			
CONSTRAINT 3			

BILL OF MATERIALS			MISCELLANEOUS MATERIALS			TYPICAL DRAWINGS			GENERAL INFORMATION				
ITEM NO.	QTY	UOM	RECN NUMBER	MATERIAL NUMBER	DESCRIPTION	DWG/FIELD BOOK NO.	TITLE	1: THE MINIMUM DEPTH OF COVER FOR THE PROJECT IS 36 INCHES. ADDITIONAL DEPTH OF COVER IS REQUIRED FOR ROAD AND WATERBODY CROSSINGS, AND IS TO BE IN ACCORDANCE WITH REFERENCED PERMIT DRAWINGS, SITE SPECIFIC DRAWINGS, OR CONSTRUCTION SPECIFICATIONS, WHICHEVER IS MORE STRINGENT.	2: THE BOUNDARIES OF ALL WORK AREAS WILL BE CLEARLY MARKED AND ALL WORK SHALL REMAIN WITHIN THE DESIGNATED WORK AREA.	3: THE REQUIRED STATE ONE CALL NOTIFICATION IS THE RESPONSIBILITY OF THE CONSTRUCTION CONTRACTOR.	4: THE CONTRACTOR SHALL ACCESS THE WORK AREA USING ONLY PUBLIC ROADS AND APPROVED ACCESS ROADS.	5: ADDITIONAL WARNING SIGNS MAY BE REQUIRED AS DICTATED BY CONSTRUCTION CONTRACT.	6: MAP PROJECTION: NAD 1983 HARN STATE PLANE FLORIDA EAST FIPS 8061 FEET, VERTICAL DATUM: NAD 83.
1	5000	FT			36" O.D. x 0.530" W.T., APTSL, 3/16" FIBZ, DSWW, 14-16 MLS FBE								
					PIPELINE MARKERS	21040-510-TYP-2001	CATHODIC PROTECTION STD. SINGLE POINT TEST STATION, TYPE 1						
					WARNING SIGNS								
					CP TEST STATION TYPE 1	21040-510-TYP-2002	CATHODIC PROTECTION STD. FOREIGN PIPELINE CROSSING TEST STATION, TYPE 2						
					CP TEST STATION TYPE 2	21040-510-TYP-2003	TYPICAL OPEN CUT / BORE						
					ANODE BED DEEP WELL	21040-510-TYP-2012	CONTINUOUS CONCRETE COATING STANDARD FOR 36"/30" PIPELINE						
						21040-510-TYP-2013	TYPICAL SCALE BAG WEIGHTS						
						21040-510-TYP-2014	WARNING SIGN DETAIL						
						21040-510-TYP-2015	AERIAL MARKER INSTALLATION DETAIL						
						21040-510-TYP-2016	AERIAL MARKER DETAIL						
						21040-510-TYP-2017	TYPICAL PIPELINE-MARKER ASSEMBLY						
						21040-510-TYP-2018	PIPELINE MARKER "WARNING" DECAL						

LEGEND

- PIPELINE ROUTE
- EDGE PIPE
- LINE PIPE
- IN ROAD W/
- INDUCTION BEND
- TRANSITION PIPE
- CURT CONC. GRAB
- SETON BEGINS
- WARNING SIGN
- MATERIAL ITEM
- AERIAL MARKER
- CP TEST STATION
- CP BENCH (BY CIV)
- PIPELINE MARKER
- PIPELINE WELDOFF
- ANODE BED DEEP WELL
- FENCE
- TELPHONE LINE
- WATERLINE
- SEWER LINE
- UTILITY LINE
- FOREIGN PIPELINE
- FOREIGN ALLEYWAY
- RAILROAD
- ROADWAY ROAD
- PARCEL ACCESS / BOUNDARY
- ROW PARCEL
- PLUS SECTION LINE
- TRAP
- WATER WELL
- HOV ENTRY / EXIT
- PERMITTING SIGN
- ROADWAY WARNING SIGN
- ADDITIONAL TEMPORARY ROADWAY
- NON-FORAGED WETLAND
- FORAGED WETLAND
- WATERBODY
- PANEL NUMBER
- WELLS/ WATERBODY
- ROCKERY
- SHOULDER BUFFER (SEE FIELD)
- TYPICAL JUTAL CORROSION
- POINT OF INTERSECTION (PI)
- VERTICAL FITTING
- SPREAD BEAMA
- ENVIRONMENTAL SENSITIVE AREA

REVISIONS					APPROVALS		
NO.	DESCRIPTION	DATE	REV BY	CHK BY	APP BY	DRAWN BY:	MB
1	IFC (UPDATE ENV. RE-ROUTES, FOOT-PRINT)	2016-04-08	MB	MJ	RG	PROJECT MANAGER	RG
0	ISSUED FOR CONSTRUCTION	2015-12-15	MB	MJ	RG	PROJECT DEF. NO.	

APPROVALS

CONSTRUCTION PERMIT NO.	
MAINTENANCE OPERATION REGION	
MIN. TEST PRESSURE	1816 PSI
DESIGN PRESSURE	1440 PSI

UniversalPegasus INTERNATIONAL
A Subsidiary of Fluor Energy Services

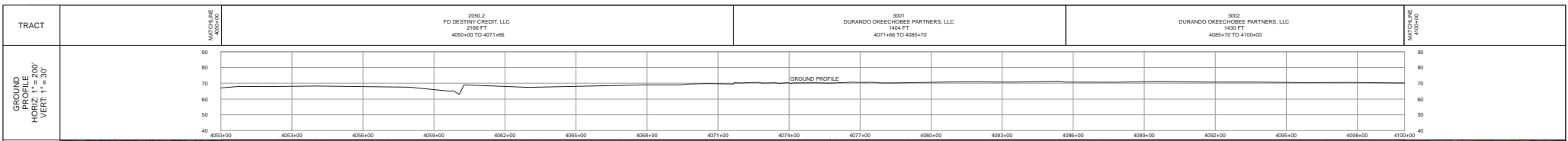
FLORIDA SOUTHEAST CONNECTION PROJECT
274- 4000+00 TO 4050+00
DISCIPLINE: 03

FLORIDA SOUTHEAST CONNECTION
ALIGNMENT SHEET
OSCEOLA COUNTY, FLORIDA

SCALE: 1" = 200'

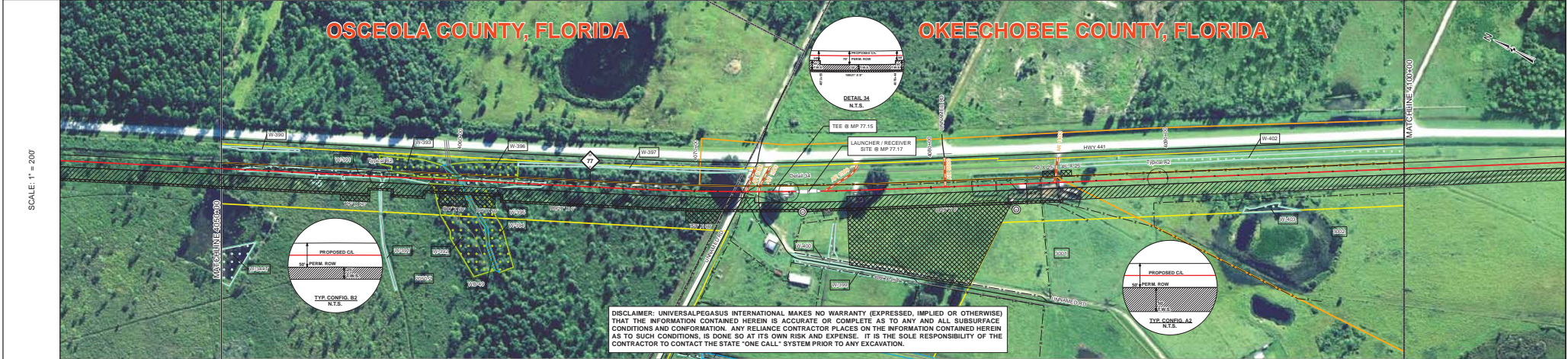
21040-510-ALS-00085

REV. 1



OSCEOLA COUNTY, FLORIDA

OKEECHOBEE COUNTY, FLORIDA



DISCLAIMER: UNIVERSALPEGASUS INTERNATIONAL MAKES NO WARRANTY (EXPRESSED, IMPLIED OR OTHERWISE) THAT THE INFORMATION CONTAINED HEREIN IS ACCURATE OR COMPLETE AS TO ANY AND ALL SUBSURFACE CONDITIONS AND CONFORMATION. ANY RELIANCE CONTRACTOR PLACES ON THE INFORMATION CONTAINED HEREIN AS TO SUCH CONDITIONS, IS DONE SO AT ITS OWN RISK AND EXPENSE. IT IS THE SOLE RESPONSIBILITY OF THE CONTRACTOR TO CONTACT THE STATE "ONE CALL" SYSTEM PRIOR TO ANY EXCAVATION.

SURVEY DATA		STATIONING		MATERIAL		ENGINEERING DATA		ENVIRONMENTAL DATA	
		MATCHLINE 4050+00							
		MATCHLINE 4100+00							
		MATCHLINE 4050+00							
		MATCHLINE 4100+00							

BILL OF MATERIALS		MISCELLANEOUS MATERIALS		TYPICAL DRAWINGS		GENERAL INFORMATION		LEGEND		REVISIONS		APPROVALS									
TEM NO.	QTY	UOM	RECN NUMBER	MATERIAL NUMBER	DESCRIPTION	DWG/FIELD BOOK NO.	TITLE	1. THE MINIMUM DEPTH OF COVER FOR THE PROJECT IS 36 INCHES. ADDITIONAL DEPTH OF COVER IS REQUIRED FOR ROAD AND WATERBODY CROSSINGS, AND IS TO BE IN ACCORDANCE WITH REFERENCED PERMIT DRAWINGS, SITE SPECIFIC DRAWINGS, OR CONSTRUCTION SPECIFICATIONS, WHICHEVER IS MORE STRINGENT.		NO.	DESCRIPTION	DATE	REV BY	APP BY	MB	CONSTRUCTION PERMIT NO.					
1	1198	FT			36" O.D. x 0.530" W.T. API 5L X70 PS2, DRAW, 14-18 MILS FBE		SET ON WEIGHTS	2. THE BOUNDARIES OF ALL WORK AREAS WILL BE CLEARLY MARKED AND ALL WORK SHALL REMAIN WITHIN THE DESIGNATED WORK AREA.		1	IFC (UPDATE ENV. RE-ROUTES, FOOT-PRINT)	2016-04-08	MB	MJ	RG	MJ	MAINTENANCE OPERATION REGION				
4	160	FT			36" O.D. x 0.750" W.T. API 5L X70 PS2, DRAW, 14-18 MILS FBE & 24-30 MILS ARD		PIPELINE MARKERS	3. THE REQUIRED STATE ONE CALL NOTIFICATION IS THE RESPONSIBILITY OF THE CONSTRUCTION CONTRACTOR.		2	ISSUED FOR CONSTRUCTION	2015-12-15	MB	MJ	RG	MJ	MIN. TEST PRESSURE 1816 PSI				
5	2	FT			36" O.D. x 0.750" W.T. API 5L X70 PS2, DRAW, 14-18 MILS FBE		WARNING SIGNS	4. THE CONTRACTOR SHALL ACCESS THE WORK AREA USING ONLY PUBLIC ROADS AND APPROVED ACCESS ROADS.		3							DESIGN PRESSURE 1440 PSI				
8	2	FT			36" O.D. x 0.429" W.T. API 5L X70 PS2, DRAW, 14-18 MILS FBE		CP TEST STATION TYPE 1	5. ADDITIONAL WARNING SIGNS MAY BE REQUIRED AS DICTATED BY CONSTRUCTION CONTRACT.		<table border="1"> <thead> <tr> <th>ENVIRONMENTAL</th> <th>APPROVAL</th> <th>COMPANY</th> </tr> </thead> <tbody> <tr> <td>LAND</td> <td></td> <td></td> </tr> </tbody> </table>		ENVIRONMENTAL	APPROVAL	COMPANY	LAND						
ENVIRONMENTAL	APPROVAL	COMPANY																			
LAND																					
12	773	FT			30" O.D. x 0.617" W.T. API 5L X70 PS2, DRAW, 14-18 MILS FBE		ANODE BED DEEP WELL	6. MAP PROJECTION: NAD 1983 HARN STATE PLANE FLORIDA EAST FIPS 9801 FEET. VERTICAL DATUM: NAD83.		<table border="1"> <thead> <tr> <th>ENVIRONMENTAL</th> <th>APPROVAL</th> <th>COMPANY</th> </tr> </thead> <tbody> <tr> <td>LAND</td> <td></td> <td></td> </tr> </tbody> </table>		ENVIRONMENTAL	APPROVAL	COMPANY	LAND						
ENVIRONMENTAL	APPROVAL	COMPANY																			
LAND																					
FITTINGS SUMMARY		CONTINUOUS CONCRETE COATING		TYPICAL DRAWINGS		GENERAL INFORMATION		LEGEND		REVISIONS		APPROVALS									
TEM NO.	QTY	UOM	RECN NUMBER	MATERIAL NUMBER	DESCRIPTION	DWG/FIELD BOOK NO.	TITLE	1. INDUCTION BEND QUANTITIES ALONG WITH THEIR DESCRIPTIONS ARE LOCATED ON DRAWING 21040-SSE-FW-00001.		NO.	DESCRIPTION	DATE	REV BY	APP BY	MB	CONSTRUCTION PERMIT NO.					
1	1	EA			LAUNCHER / RECEIVER SITE (096)		INTERNAL COATING (YES/NO): NO	2. SEE ARK DRAWING PACKAGE FOR ANODE BED DEEP WELL.		1	IFC (UPDATE ENV. RE-ROUTES, FOOT-PRINT)	2016-04-08	MB	MJ	RG	MJ	MAINTENANCE OPERATION REGION				
1	1	EA			LAUNCHER / RECEIVER SITE (096)		INTERNAL COATING (YES/NO): NO			2	ISSUED FOR CONSTRUCTION	2015-12-15	MB	MJ	RG	MJ	MIN. TEST PRESSURE 1816 PSI				
1	1	EA			LAUNCHER / RECEIVER SITE (096)		INTERNAL COATING (YES/NO): NO			3							DESIGN PRESSURE 1440 PSI				

FLORIDA SOUTHEAST CONNECTION PROJECT
 21040-SSE-FW-00001 TO 4100+00 | DISCIPLINE: 03

FLORIDA SOUTHEAST CONNECTION
 ALIGNMENT SHEET
 OSCEOLA AND OKEECHOBEE COUNTIES, FLORIDA

SCALE: 1" = 200'
 21040-510-ALS-00086 | REV. 1

SHEET 86