

DISCLAIMER: UNIVERSALPEGASUS INTERNATIONAL MAKES NO WARRANTY (EXPRESSED, IMPLIED OR OTHERWISE) THAT THE INFORMATION CONTAINED HEREIN IS ACCURATE OR COMPLETE AS TO ANY AND ALL SUBSURFACE CONDITIONS AND CONFORMATION. ANY RELIANCE CONTRACTOR PLACES ON THE INFORMATION CONTAINED HEREIN AS TO SUCH CONDITIONS, IS DONE SO AT ITS OWN RISK AND EXPENSE. IT IS THE SOLE RESPONSIBILITY OF THE CONTRACTOR TO CONTACT THE STATE "ONE CALL" SYSTEM PRIOR TO ANY EXCAVATION.

SURVEY DATA		STATIONING		MATERIAL	
MATCHLINE 3250+00		MATCHLINE 3250+00		MATCHLINE 3250+00	
MATCHLINE 3300+00		MATCHLINE 3300+00		MATCHLINE 3300+00	

BILL OF MATERIALS				MISCELLANEOUS MATERIALS				TYPICAL DRAWINGS				GENERAL INFORMATION			
ITEM NO.	QTY	UOM	DESCRIPTION	QTY	UOM	DESCRIPTION	DWG/FIELD BOOK NO.	TITLE	1.	2.	3.	4.	5.	6.	
1	4920	FT	36" O.D. x 0.520" WT. API 5L X70, FRSL, DRAM, 14-16 MILS FBE	42	EA	SET ON WEIGHTS	21040-510-TYP-20001	CATHODIC PROTECTION STD. SINGLE POINT TEST STATION, TYPE 1	1. THE MINIMUM DEPTH OF COVER FOR THE PROJECT IS 36 INCHES. ADDITIONAL DEPTH OF COVER IS REQUIRED FOR ROAD AND WATERBODY CROSSINGS, AND IS TO BE IN ACCORDANCE WITH REFERENCED PERMIT DRAWINGS, SITE SPECIFIC DRAWINGS, OR CONSTRUCTION SPECIFICATIONS, WHICHEVER IS MORE STRINGENT.	2. THE BOUNDARIES OF ALL WORK AREAS WILL BE CLEARLY MARKED AND ALL WORK SHALL REMAIN WITHIN THE DESIGNATED WORK AREA.	3. THE REQUIRED STATE ONE CALL NOTIFICATION IS THE RESPONSIBILITY OF THE CONSTRUCTION CONTRACTOR.	4. THE CONTRACTOR SHALL ACCESS THE WORK AREA USING ONLY PUBLIC ROADS AND APPROVED ACCESS ROADS.	5. ADDITIONAL WARNING SIGNS MAY BE REQUIRED AS DICTATED BY CONSTRUCTION CONTRACT.	6. MAP PROJECTION: NAD 1983 HARN STATE PLANE FLORIDA, EAST TIPS 0001 FEET, VERTICAL DATUM: NAVD 83.	
2	80	FT	36" O.D. x 0.625" WT. API 5L X70, FRSL, DRAM, 14-16 MILS FBE & 24-30 MILS ARD	2	EA	WARNING SIGNS	21040-510-TYP-20002	CATHODIC PROTECTION STD. FOREIGN PIPELINE CROSSING TEST STATION, TYPE 2							
FITTINGS SUMMARY				CONTINUOUS CONCRETE COATING				SPECIAL NOTES							
PIPE ASSEMBLIES				PIPE COATING DATA											

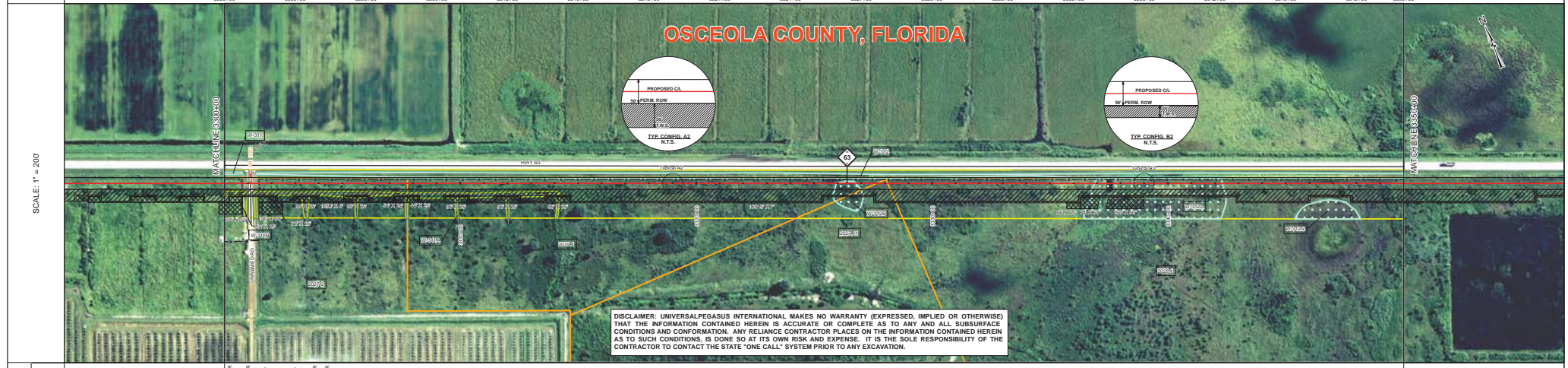
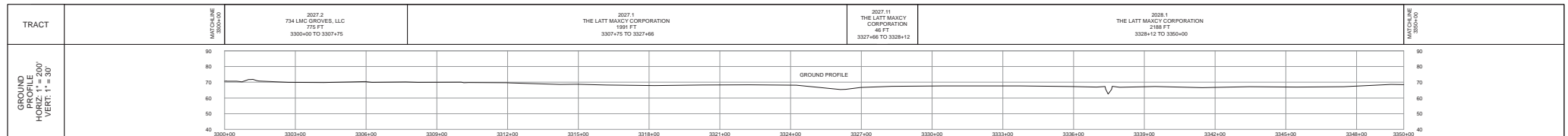
STATIONS	
3250+00	3250+00
3260+00	3260+00
3270+00	3270+00
3280+00	3280+00
3290+00	3290+00
3300+00	3300+00

REVISIONS	
NO.	DESCRIPTION
1	IFC (UPDATE ENV. RE ROUTES, FOOTPRINT)
0	ISSUED FOR CONSTRUCTION

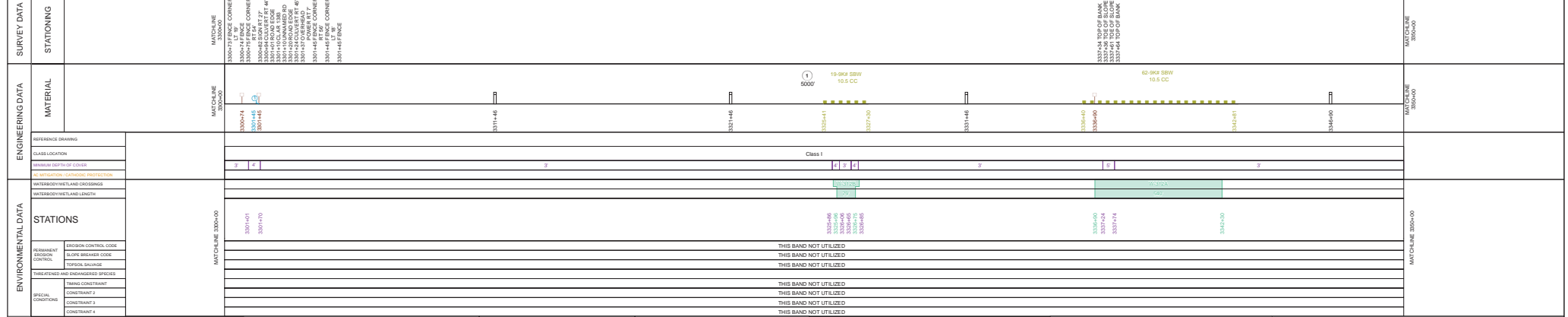
APPROVALS			
NO.	DESCRIPTION	DATE	REV. BY
1	APPROVAL	2015-12-15	MJ

FLORIDA SOUTHEAST CONNECTION PROJECT
 STA. 3250+00 TO 3300+00
 FLORIDA SOUTHEAST CONNECTION ALIGNMENT SHEET
 OSCEOLA COUNTY, FLORIDA

SCALE: 1" = 200'
 21040-510-ALS-00070
 REV. 1



DISCLAIMER: UNIVERSALPEGASUS INTERNATIONAL MAKES NO WARRANTY (EXPRESSED, IMPLIED OR OTHERWISE) THAT THE INFORMATION CONTAINED HEREIN IS ACCURATE OR COMPLETE AS TO ANY AND ALL SUBSURFACE CONDITIONS AND CONFORMATION. ANY RELIANCE CONTRACTOR PLACES ON THE INFORMATION CONTAINED HEREIN AS TO SUCH CONDITIONS, IS DONE SO AT ITS OWN RISK AND EXPENSE. IT IS THE SOLE RESPONSIBILITY OF THE CONTRACTOR TO CONTACT THE STATE "ONE CALL" SYSTEM PRIOR TO ANY EXCAVATION.



BILL OF MATERIALS				MISCELLANEOUS MATERIALS				TYPICAL DRAWINGS				GENERAL INFORMATION								
TEM. NO.	QTY	UOM	DESCRIPTION	REYN. NUMBER	REYN. NUMBER	REYN. NUMBER	REYN. NUMBER	DWG/FIELD BOOK NO.	TITLE	1.	2.	3.	4.							
1	5000	FT	36" O.D. x 0.530" W.T. API 5L X70 PSL2 DSWW, 14-16 MILS FBE							THE MINIMUM DEPTH OF COVER FOR THE PROJECT IS 36 INCHES. ADDITIONAL DEPTH OF COVER IS REQUIRED FOR ROAD AND WATERBODY CROSSINGS AND IS TO BE IN ACCORDANCE WITH REFERENCED PERMIT DRAWINGS, SITE SPECIFIC DRAWINGS, OR CONSTRUCTION SPECIFICATIONS, WHICHEVER IS MORE STRINGENT.	THE BOUNDARIES OF ALL WORK AREAS WILL BE CLEARLY MARKED AND ALL WORK SHALL REMAIN WITHIN THE DESIGNATED WORK AREA.	THE REQUIRED STATE ONE CALL NOTIFICATION IS THE RESPONSIBILITY OF THE CONSTRUCTION CONTRACTOR.	THE CONTRACTOR SHALL ACCESS THE WORK AREA USING ONLY PUBLIC ROADS AND APPROVED ACCESS ROADS.							
										5. ADDITIONAL WARNING SIGNS MAY BE REQUIRED AS DICTATED BY CONSTRUCTION CONTRACT.	6. MAP PROJECTION: NAD 1983 HARN STATE PLANE FLORIDA EAST TIPS 0801 FEET, VERTICAL DATUM: NAVD 88.									
FITTINGS SUMMARY				CONTINUOUS CONCRETE COATING				PIPE COATING DATA				SPECIAL NOTES								

FITTINGS SUMMARY		CONTINUOUS CONCRETE COATING		PIPE COATING DATA		SPECIAL NOTES	
TEM. NO.	QTY	UOM	DESCRIPTION	REYN. NUMBER	REYN. NUMBER	REYN. NUMBER	REYN. NUMBER

PIPE ASSEMBLIES	
QTY	UOM

LEGEND	
SYMBOL	DESCRIPTION
[Symbol]	PIPELINE ROUTE
[Symbol]	ENGINE PWS
[Symbol]	GRADE PWS
[Symbol]	LINE PWS
[Symbol]	IR AND HV
[Symbol]	WATERLINE
[Symbol]	SEWER LINE
[Symbol]	BURIED CABLE
[Symbol]	UTILITY LINE
[Symbol]	GENERAL PIPELINE
[Symbol]	FORECASTED WETLAND
[Symbol]	WETLAND
[Symbol]	WATERBODY
[Symbol]	ABANDONED WETLAND
[Symbol]	ROAD
[Symbol]	RAILROAD
[Symbol]	UTILITY ROAD
[Symbol]	BOUNDARY
[Symbol]	ROW PARCEL
[Symbol]	PLUS SECTION LINE
[Symbol]	TRAIL
[Symbol]	WATER WELL
[Symbol]	AND ENTRY / EXIT
[Symbol]	AND DEEP WELL
[Symbol]	PERMITTED WAD
[Symbol]	ENVIRONMENTAL RESTRICTION
[Symbol]	NON-FORESTED WETLAND
[Symbol]	FORESTED WETLAND
[Symbol]	WATERBODY
[Symbol]	PAVED SURFACE
[Symbol]	METAL WETLAND / WATERBODY
[Symbol]	BOUNDRY
[Symbol]	SHOULDER BUFFER (POST-FIELD)
[Symbol]	TYPICAL JETTING CONFORMATION
[Symbol]	POINT OF INTERSECTION P/S
[Symbol]	VERTICAL FITTING
[Symbol]	SPREAD BEAK
[Symbol]	ENVIRONMENTAL SENSITIVE AREA

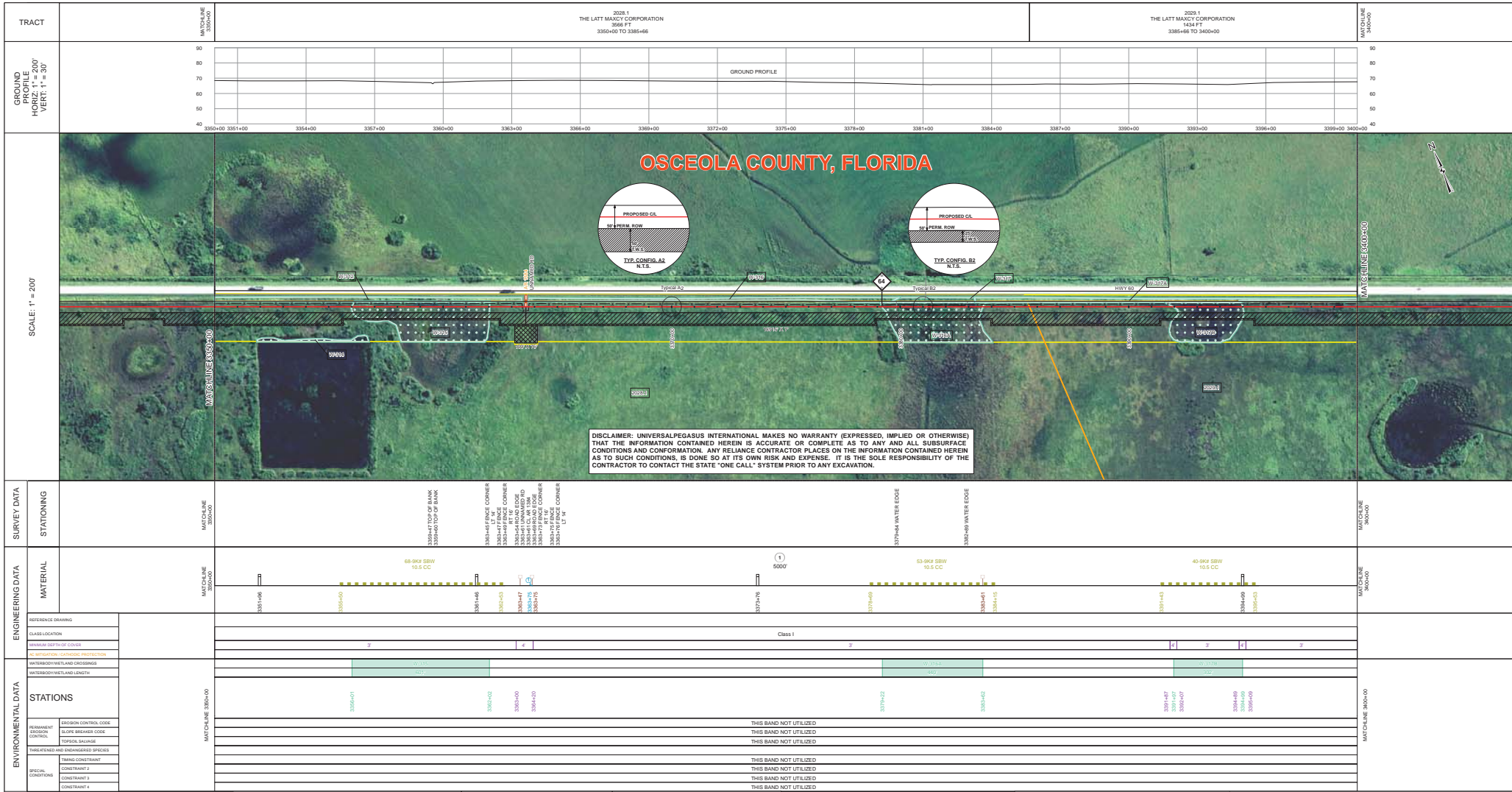
REVISIONS				APPROVALS			
NO.	DESCRIPTION	DATE	REV BY	CHK BY	APP BY	DRAWN BY	MB
1	IFC (UPDATE ENV. RE-ROUTES, FOOT-PRINT)	2016-04-08	MB	MJ	RG	PROJECT MANAGER	RG
0	ISSUED FOR CONSTRUCTION	2015-12-15	MB	MJ	RG	PROJECT DEF. NO.	RG

APPROVAL		COMPANY	
ENVIRONMENTAL	LAND	ENVIRONMENTAL	LAND

FLORIDA SOUTHEAST CONNECTION PROJECT
21040-510-ALS-00071

UniversalPegasus INTERNATIONAL
A Subsidiary of Fluor Corporation

FLORIDA SOUTHEAST CONNECTION
ALIGNMENT SHEET T
OSCEOLA COUNTY, FLORIDA



BILL OF MATERIALS				MISCELLANEOUS MATERIALS				TYPICAL DRAWINGS				GENERAL INFORMATION			
ITEM NO.	QTY	UOM	DESCRIPTION	QTY	UOM	DESCRIPTION	DWG/FIELD BOOK NO.	TITLE	1.	2.	3.	4.	5.	6.	
1	5000	FT	36" O.D. x 0.1530 W.T., API 5L X70 PSL2, WBE, 14-16 MILS FBE						1. THE MINIMUM DEPTH OF COVER FOR THE PROJECT IS 36 INCHES. ADDITIONAL DEPTH OF COVER IS REQUIRED FOR ROAD AND WATERBODY CROSSINGS, AND IS TO BE IN ACCORDANCE WITH REFERENCED PERMIT DRAWINGS, SITE SPECIFIC DRAWINGS, OR CONSTRUCTION SPECIFICATIONS, WHICHEVER IS MORE STRINGENT.	2. THE BOUNDARIES OF ALL WORK AREAS WILL BE CLEARLY MARKED AND ALL WORK SHALL REMAIN WITHIN THE DESIGNATED WORK AREA.	3. THE REQUIRED STATE ONE CALL NOTIFICATION IS THE RESPONSIBILITY OF THE CONSTRUCTION CONTRACTOR.	4. THE CONTRACTOR SHALL ACCESS THE WORK AREA USING ONLY PUBLIC ROADS AND APPROVED ACCESS ROADS.	5. ADDITIONAL WARNING SIGNS MAY BE REQUIRED AS DICTATED BY CONSTRUCTION CONTRACT.	6. MAP PROJECTION: NAD 1983 HARN STATE PLANE FLORIDA EAST FIPS 0801 FEET, VERTICAL DATUM: NAVD 83.	

FITTINGS SUMMARY				CONTINUOUS CONCRETE COATING				PIPE COATING DATA				
ITEM NO.	QTY	UOM	DESCRIPTION	QTY	UOM	DESCRIPTION	QTY	UOM	DESCRIPTION	QTY	UOM	DESCRIPTION

SPECIAL NOTES			
1.	INDUCTION BEND QUANTITIES ALONG WITH THEIR DESCRIPTIONS ARE LOCATED ON DRAWING 21040-SSE-FW-00001.		
2.	SEE AERK DRAWING PACKAGE FOR ANODE BED DEEP WELL.		

LEGEND			
	PIPELINE ROUTE		FENCING
	POWER LINE		TELEPHONE LINE
	WATER LINE		SEWER LINE
	GAS LINE		FIBER OPTIC CABLE
	UTILITY LINE		AERIAL PIPELINE
	FOREWARN ROAD		PIPELINE ACCESS
	COUNTY BOUNDARY		PLUS SECTION LINE
	WATER WELL		ANODE BED DEEP WELL

REVISIONS				APPROVALS			
NO.	DESCRIPTION	DATE	REV BY	CHK BY	APP BY	CONSTRUCTION	PERMIT NO.
1	IFC (UPDATE ENV. RE-ROUTES, FOOT-PRINT)	2016-04-08	MB	MJ	RG	MB	
0	ISSUED FOR CONSTRUCTION	2015-12-15	MB	MJ	RG	MJ	

UNIVERSALPEGASUS INTERNATIONAL
A Subsidiary of Macquarie Health Solutions

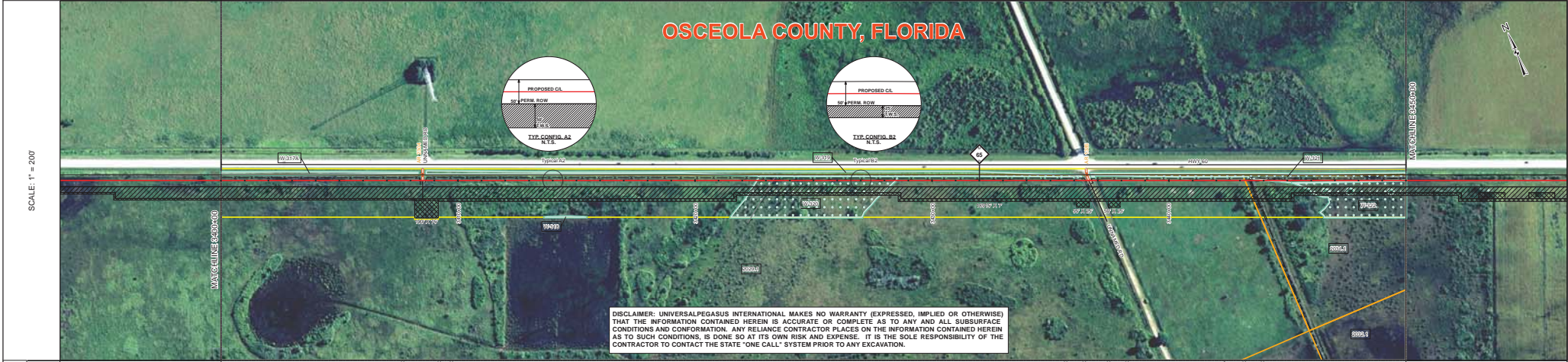
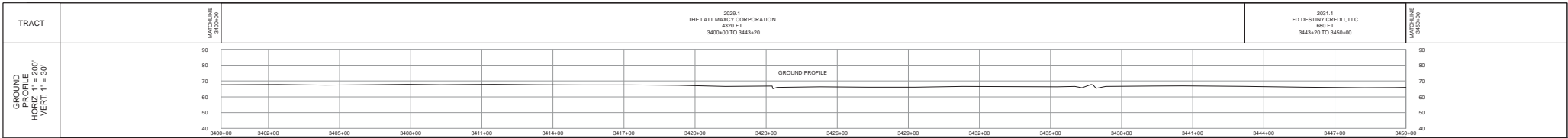
FLORIDA SOUTHEAST CONNECTION

FLORIDA SOUTHEAST CONNECTION PROJECT
STN: 3350+00 TO 3400+00
DISCIPLINE: 03

FLORIDA SOUTHEAST CONNECTION
ALIGNMENT SHEET
OSCEOLA COUNTY, FLORIDA

SCALE: 1" = 200' 21040-510-ALS-00072 REV. 1

SHEET 72

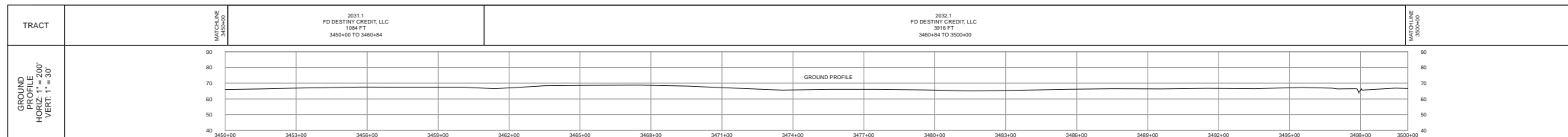


DISCLAIMER: UNIVERSALPEGASUS INTERNATIONAL MAKES NO WARRANTY (EXPRESSED, IMPLIED OR OTHERWISE) THAT THE INFORMATION CONTAINED HEREIN IS ACCURATE OR COMPLETE AS TO ANY AND ALL SUBSURFACE CONDITIONS AND CONFORMATION. ANY RELIANCE CONTRACTOR PLACES ON THE INFORMATION CONTAINED HEREIN AS TO SUCH CONDITIONS, IS DONE SO AT ITS OWN RISK AND EXPENSE. IT IS THE SOLE RESPONSIBILITY OF THE CONTRACTOR TO CONTACT THE STATE "ONE CALL" SYSTEM PRIOR TO ANY EXCAVATION.

SURVEY DATA		STATIONING	
TRACT	2025.1 THE LATT MACKEY CORPORATION 43301 FT 3400+00 TO 3443+00	MATCHLINE 3400+00	MATCHLINE 3450+00
ENGINEERING DATA		MATERIAL	
REFERENCE DRAWING		MATCHLINE 3400+00	MATCHLINE 3450+00
CLASSIFICATION			
MINIMUM DEPTH OF COVER			
INSTALLATION CATHODIC PROTECTION			
ENVIRONMENTAL DATA		STATIONS	
INTERSECTION/WETLAND CROSSINGS		MATCHLINE 3400+00	MATCHLINE 3450+00
WETLAND/RYTHM/LAND USE			
PERMIT/REGULATORY CONTROL			
THREATENED AND ENDANGERED SPECIES			
STAGING CONSTRAINT			
CONSTRAINT 1			
CONSTRAINT 2			
CONSTRAINT 3			
CONSTRAINT 4			

BILL OF MATERIALS				MISCELLANEOUS MATERIALS				TYPICAL DRAWINGS		GENERAL INFORMATION	
ITEM NO.	QTY	UOM	DESCRIPTION	QTY	UOM	DESCRIPTION	DWG/FIELD BOOK NO.	TITLE	1.	MINIMUM DEPTH OF COVER FOR THE PROJECT IS 36 INCHES. ADDITIONAL DEPTH OF COVER IS REQUIRED FOR ROAD AND WATERBODY CROSSINGS, AND IS TO BE IN ACCORDANCE WITH REFERENCED PERMIT DRAWINGS, SITE SPECIFIC DRAWINGS, OR CONSTRUCTION SPECIFICATIONS, WHICHEVER IS MORE STRINGENT.	
1	5000	FT	36" O.D. x 0.1500 W.T. API 5L X70 PSL2 DS&W, 14-16 MILS FBE	2	EA	PIPELINE MARKERS	21040-510-TYP-2001	CATHODIC PROTECTION STD. SINGLE POINT TEST STATION, TYPE 1	2.	THE BOUNDARIES OF ALL WORK AREAS WILL BE CLEARLY MARKED AND ALL WORK SHALL REMAIN WITHIN THE DESIGNATED WORK AREA.	
				4	EA	WARNING SIGNS	21040-510-TYP-2002	CATHODIC PROTECTION STD. FOREIGN PIPELINE CROSSING TEST STATION, TYPE 2	3.	THE REQUIRED STATE ONE CALL NOTIFICATION IS THE RESPONSIBILITY OF THE CONSTRUCTION CONTRACTOR.	
				1	EA	CP TEST STATION TYPE 1	21040-510-TYP-2003	CP TEST STATION TYPE 1	4.	THE CONTRACTOR SHALL ACCESS THE WORK AREA USING ONLY PUBLIC ROADS AND APPROVED ACCESS ROADS.	
				0	EA	AERIAL MARKERS	21040-510-TYP-2004	TYPICAL OPEN CUT / BORE	5.	ADDITIONAL WARNING SIGNS MAY BE REQUIRED AS DICTATED BY CONSTRUCTION CONTRACT.	
				0	EA	ANODE BED DEEP WELL	21040-510-TYP-2012	CONTINUOUS CONCRETE COATING STANDARD FOR 36"/30" PIPELINE	6.	MAP PROJECTION: NAD 1983 HARN STATE PLANE FLORIDA EAST FIPS 0801 FEET, VERTICAL DATUM: NAD 83.	
FITTINGS SUMMARY				CONTINUOUS CONCRETE COATING				TYPICAL DRAWINGS		GENERAL INFORMATION	
ITEM NO.	QTY	UOM	DESCRIPTION	QTY	UOM	DESCRIPTION	21040-510-TYP-2013	TYPICAL SADDLE BAG WEIGHTS	SPECIAL NOTES		
							21040-510-TYP-2014	WARNING SIGN DETAIL	1. INDUCTION BEND QUANTITIES ALONG WITH THEIR DESCRIPTIONS ARE LOCATED ON DRAWING 21040-SIG-FW-00001.		
PIPE ASSEMBLIES				PIPE COATING DATA				TYPICAL DRAWINGS		GENERAL INFORMATION	
QTY	UOM	DESCRIPTION	21040-510-TYP-2015	21040-510-TYP-2016	21040-510-TYP-2017	21040-510-TYP-2018	21040-510-TYP-2019	21040-510-TYP-2020	2. A - SEE APM DRAWING PACKAGE FOR ANODE BED DEEP WELL.		

LEGEND		REVISIONS		APPROVALS	
PIPELINE ROUTE	PROPOSED PIPE	NO.	DESCRIPTION	DATE	REV. BY
EDGE PIPE	EXISTING PIPE	1	IFC (UPDATE ENV. RE-ROUTES, FOOT-PRINT)	2016-04-08	MB MJ
LINE PIPE	CONCRETE PIPE	2	ISSUED FOR CONSTRUCTION	2015-12-15	MB MJ
TRANSDUCTION PIPE	PIPELINE MARKER	APPROVAL COMPANY			
PIPELINE MARKER	PIPELINE MARKER				
PIPELINE MARKER	PIPELINE MARKER				
PIPELINE MARKER	PIPELINE MARKER	FLORIDA SOUTHEAST CONNECTION PROJECT 21040-SIG-FW-00001 TO 3450+00			
PIPELINE MARKER	PIPELINE MARKER	FLORIDA SOUTHEAST CONNECTION ALIGNMENT SHEET 1 OSCEOLA COUNTY, FLORIDA			
PIPELINE MARKER	PIPELINE MARKER	SCALE: 1" = 200' 21040-510-ALS-00073 REV. 1			



OSCEOLA COUNTY, FLORIDA



DISCLAIMER: UNIVERSALPEGASUS INTERNATIONAL MAKES NO WARRANTY (EXPRESSED, IMPLIED OR OTHERWISE) THAT THE INFORMATION CONTAINED HEREIN IS ACCURATE OR COMPLETE AS TO ANY AND ALL SUBSURFACE CONDITIONS AND CONFORMATION. ANY RELIANCE CONTRACTOR PLACES ON THE INFORMATION CONTAINED HEREIN AS TO SUCH CONDITIONS, IS DONE SO AT ITS OWN RISK AND EXPENSE. IT IS THE SOLE RESPONSIBILITY OF THE CONTRACTOR TO CONTACT THE STATE "ONE CALL" SYSTEM PRIOR TO ANY EXCAVATION.

SURVEY DATA		STATIONING	
MATCHLINE 3500+00		MATCHLINE 3500+00	
ENGINEERING DATA		MATERIAL	
REFERENCE DRAWING		36" DIA. DUCT 10.5 CC	
CLASS LOCATION		56" DIA. DUCT 10.5 CC	
MINIMUM DEPTH OF COVER		5000'	
CATHODIC PROTECTION		231" DIA. DUCT 10.5 CC	
ENVIRONMENTAL DATA		STATIONS	
WATERBODIES/WETLAND CROSSINGS		3450+00	
WATERBODIES/WETLAND LENGTH		3450+00	
PERMITTING		3450+00	
EROSION CONTROL CODE		3450+00	
BULKY DEBRIS CODE		3450+00	
TOPOCAL SALVAGE		3450+00	
THREATENED AND ENDANGERED SPECIES		3450+00	
TRADING CONSTRAINT		3450+00	
CONSTRAINT 1		3450+00	
CONSTRAINT 2		3450+00	
CONSTRAINT 3		3450+00	
CONSTRAINT 4		3450+00	

BILL OF MATERIALS				MISCELLANEOUS MATERIALS				TYPICAL DRAWINGS				GENERAL INFORMATION			
ITEM NO.	QTY	UOM	DESCRIPTION	QTY	UOM	REIN. NUMBER	MATERIAL NUMBER	DESCRIPTION	DWG/FIELD BOOK NO.	TITLE	1. THE MINIMUM DEPTH OF COVER FOR THE PROJECT IS 36 INCHES. ADDITIONAL DEPTH OF COVER IS REQUIRED FOR ROAD AND WATERBODY CROSSINGS AND IS TO BE IN ACCORDANCE WITH REFERENCED PERMIT DRAWINGS, SITE SPECIFIC DRAWINGS, OR CONSTRUCTION SPECIFICATIONS, WHICHEVER IS MORE STRINGENT.				
1	5000	FT	36" O.D. x 0.1500 W.T. - API 5L X70 F152, DSAW, 14-16 MILS FBE						21040-510-TYP-2001	CATHODIC PROTECTION STD. SINGLE POINT TEST STATION, TYPE 1	2. THE BOUNDARIES OF ALL WORK AREAS WILL BE CLEARLY MARKED AND ALL WORK SHALL REMAIN WITHIN THE DESIGNATED WORK AREA.				
									21040-510-TYP-2002	CATHODIC PROTECTION STD. FOREIGN PIPELINE CROSSING TEST STATION, TYPE 2	3. THE REQUIRED STATE ONE CALL NOTIFICATION IS THE RESPONSIBILITY OF THE CONSTRUCTION CONTRACTOR.				
									21040-510-TYP-2003	CP TEST STATION TYPE 1	4. THE CONTRACTOR SHALL ACCESS THE WORK AREA USING ONLY PUBLIC ROADS AND APPROVED ACCESS ROADS.				
									21040-510-TYP-2004	CP TEST STATION TYPE 2	5. ADDITIONAL WARNING SIGNS MAY BE REQUIRED AS DICTATED BY CONSTRUCTION CONTRACT.				
									21040-510-TYP-2012	TYPICAL OPEN CUT / BORE	6. MAP PROJECTION: NAD 1983 HARN STATE PLANE FLORIDA EAST TIPS 0801 FEET. VERTICAL DATUM: NAVD 83.				
									21040-510-TYP-2013	CONTINUOUS CONCRETE COATING STANDARD FOR 36"/30" PIPELINE	SPECIAL NOTES 1. INDUCTION BEND QUANTITIES ALONG WITH THEIR DESCRIPTIONS ARE LOCATED ON DRAWING 21040-510-TYP-2017. 2. SEE AEM DRAWING PACKAGE FOR ANODE BED DEEP WELL.				
									21040-510-TYP-2014	TYPICAL SADDLE BAG WEIGHTS WARNING SIGN DETAIL					
									21040-510-TYP-2015	AERIAL MARKER INSTALLATION DETAIL					
									21040-510-TYP-2016	AERIAL MARKER DETAIL					
									21040-510-TYP-2017	TYPICAL PIPELINE-MARKER ASSEMBLY					
									21040-510-TYP-2018	PIPELINE MARKER "WARNING" DECAL					

FITTINGS SUMMARY				CONTINUOUS CONCRETE COATING				PIPE COATING DATA			
ITEM NO.	QTY	UOM	DESCRIPTION	QTY	UOM	REIN. NUMBER	MATERIAL NUMBER	DESCRIPTION	PIPE COATING: 14 MIL MINIMUM FBE AND 24 MIL MINIMUM ARO	SURF WELD COATING: 2 PART EPOXY	INTERNAL COATING (YES/NO): NO

LEGEND

- PIPELINE ROUTE
- FENCE
- UTILITY LINE
- WATERLINE
- SEWER LINE
- ROAD
- RAILROAD
- ROADWAY
- ROW PARCEL
- PLUG SECTION LINE
- TRAP
- WATER WELL
- ANODE BED DEEP WELL
- PERMITTING SIGN
- ROADWAY WARNING SIGN
- ADDITIONAL TEMPORARY ROADWAY SIGNAGE
- NON FORGOTTEN WETLAND
- FORGOTTEN WETLAND
- WATERBODY
- PAVED SURFACE
- UNPAVED SURFACE
- ROADWAY
- ROADWAY BUFFER (FEET)
- TYPICAL AERIAL CORROSION
- POINT OF INTERSECTION (POI)
- VERTICAL FITTING
- SPREAD BEAMS
- ENVIRONMENTAL SENSITIVE AREA

REVISIONS

NO.	DESCRIPTION	DATE	REV BY	CHK BY	APP BY
1	IFC (UPDATE ENV. RE-ROUTES, FOOT-PRINT)	2016-04-08	MB	MJ	RG
0	ISSUED FOR CONSTRUCTION	2015-12-15	MB	MJ	RG

APPROVALS

NO.	DESCRIPTION	DATE	REV BY	CHK BY	APP BY
1	APPROVAL				

FLORIDA SOUTHEAST CONNECTION PROJECT
 21040-510-ALS-00074
 FLORIDA SOUTHEAST CONNECTION ALIGNMENT SHEET 1
 OSCEOLA COUNTY, FLORIDA

SCALE: 1" = 200'

21040-510-ALS-00074

REV. 1