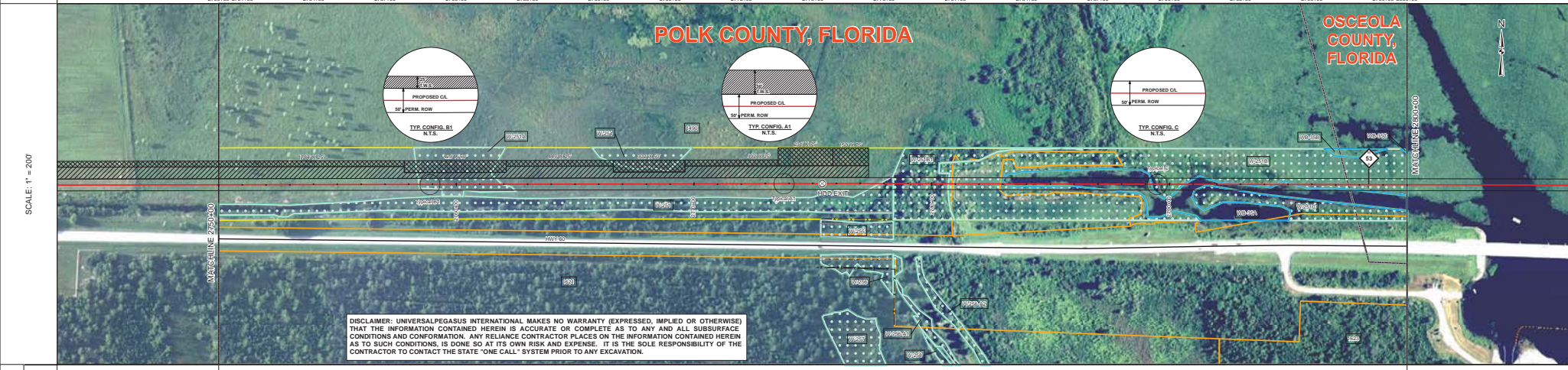
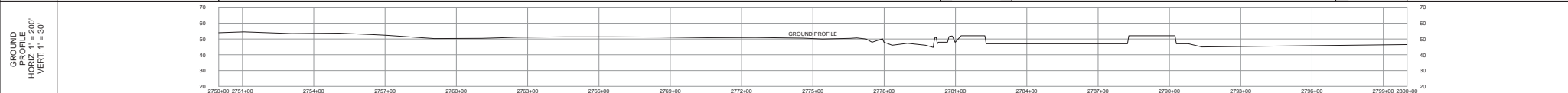


TRACT	1490 SOUTH FLORIDA WATER MANAGEMENT DISTRICT 3065 FT 2750+00 TO 2780+86	FLORIDA DEPARTMENT OF TRANSPORTATION 203 FT 2780+86 TO 2792+88	1490 SOUTH FLORIDA WATER MANAGEMENT DISTRICT 1464 FT 2782+89 TO 2797+53	OSCEOLA COUNTY ROW 547 FT 2797+53 TO 2800+00
-------	---	--	---	--



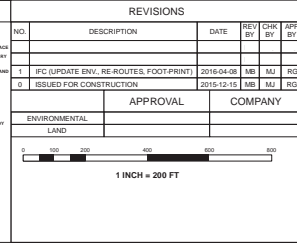
SURVEY DATA	STATIONING	MATERIAL	STATIONS
2750+00	2750+00	2750+00	2750+00
2755+00	2755+00	2755+00	2755+00
2760+00	2760+00	2760+00	2760+00
2765+00	2765+00	2765+00	2765+00
2770+00	2770+00	2770+00	2770+00
2775+00	2775+00	2775+00	2775+00
2780+00	2780+00	2780+00	2780+00
2785+00	2785+00	2785+00	2785+00
2790+00	2790+00	2790+00	2790+00
2795+00	2795+00	2795+00	2795+00
2800+00	2800+00	2800+00	2800+00

BILL OF MATERIALS		MISCELLANEOUS MATERIALS		TYPICAL DRAWINGS		GENERAL INFORMATION	
ITEM NO.	QTY	RECN	DESCRIPTION	QTY	RECN	DWG/FIELD BOOK NO.	TITLE
1	2460	EA	36" O.D. x 0.520" W.T., API 5L, X70, PSL2, DRW, 14-16 MILS FBE	44	EA	21040-510-TYP-2001	CATHODIC PROTECTION STD. SINGLE POINT TEST STATION, TYPE 1
2	2460	EA	36" O.D. x 0.760" W.T., API 5L, X70, PSL2, DRW, 14-16 MILS FBE & 24-30 MILS ARO	3	EA	21040-510-TYP-2002	CATHODIC PROTECTION STD. FOREIGN PIPELINE CROSSING TEST STATION, TYPE 2
3	80	EA	36" O.D. x 0.625" W.T., API 5L, X70, PSL2, DRW, 14-16 MILS FBE	1	EA	21040-510-TYP-2003	TYPICAL OPEN CUT / BORE
FITTINGS SUMMARY		CONTINUOUS CONCRETE COATING		PIPE COATING DATA		GENERAL INFORMATION	
1	1	EA	10" 3R VERTICAL FITTING	21040-510-TYP-2012	CONTINUOUS CONCRETE COATING STANDARD FOR 36"/30" PIPELINE	1	THE MINIMUM DEPTH OF COVER FOR THE PROJECT IS 36 INCHES. ADDITIONAL DEPTH OF COVER IS REQUIRED FOR ROAD AND WATERBODY CROSSINGS, AND IS TO BE IN ACCORDANCE WITH REFERENCED PERMIT DRAWINGS, SITE SPECIFIC DRAWINGS OR CONSTRUCTION SPECIFICATIONS, WHICHEVER IS MORE STRINGENT.
PIPE ASSEMBLIES		PIPE COATING DATA		GENERAL INFORMATION		SPECIAL NOTES	
QTY	UCM	DESCRIPTION	PIPE COATING: 14 MIL MINIMUM FBE AND 24 MIL MINIMUM ARO SINCE WELD COATING: 2 PART EPOXY INTERNAL COATING (YES/NO): NO	21040-510-TYP-2013	21040-510-TYP-2014	21040-510-TYP-2015	21040-510-TYP-2016
21040-510-TYP-2017	21040-510-TYP-2018	21040-510-TYP-2019	21040-510-TYP-2020	21040-510-TYP-2021	21040-510-TYP-2022	21040-510-TYP-2023	21040-510-TYP-2024

REVISIONS		APPROVALS	
NO.	DESCRIPTION	DATE	REV BY
1	IFC (UPDATE ENV. RE. ROUTES, FOOTPRINT)	2016-04-08	MB
0	ISSUED FOR CONSTRUCTION	2015-12-15	MB

**LEGEND**

- PROPOSED PIPE
- EXISTING PIPE
- PROPOSED ROUTE
- EXISTING ROUTE
- PROPOSED FENCE
- EXISTING FENCE
- PROPOSED TELEPHONE LINE
- EXISTING TELEPHONE LINE
- PROPOSED POWER LINE
- EXISTING POWER LINE
- PROPOSED ROAD
- EXISTING ROAD
- PROPOSED WATERWAY
- EXISTING WATERWAY
- PROPOSED WETLAND
- EXISTING WETLAND
- PROPOSED BUREAU OF LAND MANAGEMENT (BLM) PROPERTY
- EXISTING BLM PROPERTY
- PROPOSED FEDERAL HIGHWAY
- EXISTING FEDERAL HIGHWAY
- PROPOSED STATE ROAD
- EXISTING STATE ROAD
- PROPOSED COUNTY ROAD
- EXISTING COUNTY ROAD
- PROPOSED LOCAL ROAD
- EXISTING LOCAL ROAD
- PROPOSED RAILROAD
- EXISTING RAILROAD
- PROPOSED AIRPORT
- EXISTING AIRPORT
- PROPOSED CANAL
- EXISTING CANAL
- PROPOSED DRAINAGE CANAL
- EXISTING DRAINAGE CANAL
- PROPOSED DITCH
- EXISTING DITCH
- PROPOSED TRENCH
- EXISTING TRENCH
- PROPOSED TIE-IN
- EXISTING TIE-IN
- PROPOSED TIE-OUT
- EXISTING TIE-OUT
- PROPOSED TIE-UP
- EXISTING TIE-UP
- PROPOSED TIE-DOWN
- EXISTING TIE-DOWN
- PROPOSED TIE-ACROSS
- EXISTING TIE-ACROSS
- PROPOSED TIE-UNDER
- EXISTING TIE-UNDER
- PROPOSED TIE-OVER
- EXISTING TIE-OVER
- PROPOSED TIE-THROUGH
- EXISTING TIE-THROUGH
- PROPOSED TIE-AT
- EXISTING TIE-AT
- PROPOSED TIE-TO
- EXISTING TIE-TO
- PROPOSED TIE-FROM
- EXISTING TIE-FROM
- PROPOSED TIE-TO/FROM
- EXISTING TIE-TO/FROM
- PROPOSED TIE-TO/FROM/AT
- EXISTING TIE-TO/FROM/AT
- PROPOSED TIE-TO/FROM/TO
- EXISTING TIE-TO/FROM/TO
- PROPOSED TIE-TO/FROM/ACROSS
- EXISTING TIE-TO/FROM/ACROSS
- PROPOSED TIE-TO/FROM/UNDER
- EXISTING TIE-TO/FROM/UNDER
- PROPOSED TIE-TO/FROM/OVER
- EXISTING TIE-TO/FROM/OVER
- PROPOSED TIE-TO/FROM/THROUGH
- EXISTING TIE-TO/FROM/THROUGH
- PROPOSED TIE-TO/FROM/AT/THROUGH
- EXISTING TIE-TO/FROM/AT/THROUGH
- PROPOSED TIE-TO/FROM/TO/THROUGH
- EXISTING TIE-TO/FROM/TO/THROUGH
- PROPOSED TIE-TO/FROM/ACROSS/THROUGH
- EXISTING TIE-TO/FROM/ACROSS/THROUGH
- PROPOSED TIE-TO/FROM/UNDER/THROUGH
- EXISTING TIE-TO/FROM/UNDER/THROUGH
- PROPOSED TIE-TO/FROM/OVER/THROUGH
- EXISTING TIE-TO/FROM/OVER/THROUGH
- PROPOSED TIE-TO/FROM/THROUGH/AT
- EXISTING TIE-TO/FROM/THROUGH/AT
- PROPOSED TIE-TO/FROM/THROUGH/TO
- EXISTING TIE-TO/FROM/THROUGH/TO
- PROPOSED TIE-TO/FROM/THROUGH/ACROSS
- EXISTING TIE-TO/FROM/THROUGH/ACROSS
- PROPOSED TIE-TO/FROM/THROUGH/UNDER
- EXISTING TIE-TO/FROM/THROUGH/UNDER
- PROPOSED TIE-TO/FROM/THROUGH/OVER
- EXISTING TIE-TO/FROM/THROUGH/OVER
- PROPOSED TIE-TO/FROM/THROUGH/THROUGH
- EXISTING TIE-TO/FROM/THROUGH/THROUGH
- PROPOSED TIE-TO/FROM/THROUGH/AT/THROUGH
- EXISTING TIE-TO/FROM/THROUGH/AT/THROUGH
- PROPOSED TIE-TO/FROM/THROUGH/TO/THROUGH
- EXISTING TIE-TO/FROM/THROUGH/TO/THROUGH
- PROPOSED TIE-TO/FROM/THROUGH/ACROSS/THROUGH
- EXISTING TIE-TO/FROM/THROUGH/ACROSS/THROUGH
- PROPOSED TIE-TO/FROM/THROUGH/UNDER/THROUGH
- EXISTING TIE-TO/FROM/THROUGH/UNDER/THROUGH
- PROPOSED TIE-TO/FROM/THROUGH/OVER/THROUGH
- EXISTING TIE-TO/FROM/THROUGH/OVER/THROUGH



**UNIVERSALPEGASUS INTERNATIONAL**  
A Subsidiary of Manpowergroup Inc.

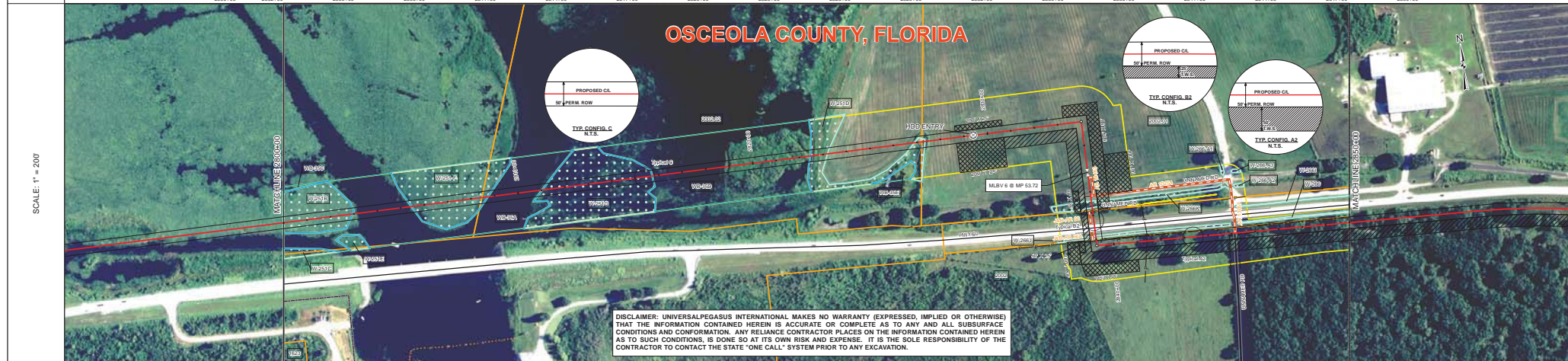
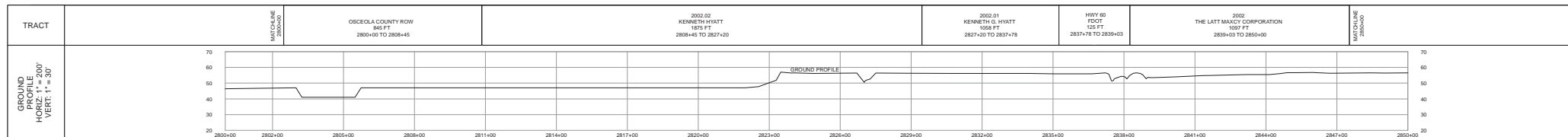
**FLORIDA SOUTHEAST CONNECTION**

FLORIDA SOUTHEAST CONNECTION PROJECT  
STA. 2750+00 TO 2800+00  
DISCIPLINE: 03

**FLORIDA SOUTHEAST CONNECTION ALIGNMENT SHEET**  
POLK AND OSCEOLA COUNTIES, FLORIDA

SCALE: 1" = 200'  
21040-510-ALS-00060  
REV. 1

SHEET 60



**DISCLAIMER: UNIVERSALPEGASUS INTERNATIONAL MAKES NO WARRANTY (EXPRESSED, IMPLIED OR OTHERWISE) THAT THE INFORMATION CONTAINED HEREIN IS ACCURATE OR COMPLETE AS TO ANY AND ALL SUBSURFACE CONDITIONS AND CONFORMATION. ANY RELIANCE CONTRACTOR PLACES ON THE INFORMATION CONTAINED HEREIN AS TO SUCH CONDITIONS, IS DONE SO AT ITS OWN RISK AND EXPENSE. IT IS THE SOLE RESPONSIBILITY OF THE CONTRACTOR TO CONTACT THE STATE "ONE CALL" SYSTEM PRIOR TO ANY EXCAVATION.**

SURVEY DATA		STATIONING	
MATCHLINE 2800+00	OSCEOLA COUNTY ROW 845 FT 2800+00 TO 2808+45	MATCHLINE 2800+00	2847+00
2002 02 KENNETH HYATT 1975 FT 2808+45 TO 2827+20		2002 01 KENNETH G. HYATT 1958 FT 2827+20 TO 2837+78	
		HWY 60 FOOT 125 FT 2837+78 TO 2839+03	
		2002 THE LATT MACKEY CORPORATION 1097 FT 2839+03 TO 2850+00	MATCHLINE 2850+00

ENGINEERING DATA		MATERIAL	
REFERENCE DRAWING	21040-505-HDW-12002	CLASSIFICATION	Class 1
CLASSIFICATION	SEE REF DWG	CLASSIFICATION	SEE REF DWG
MINIMUM DEPTH OF COVER		CLASSIFICATION	
INSTALLATION/CATHODIC PROTECTION		CLASSIFICATION	

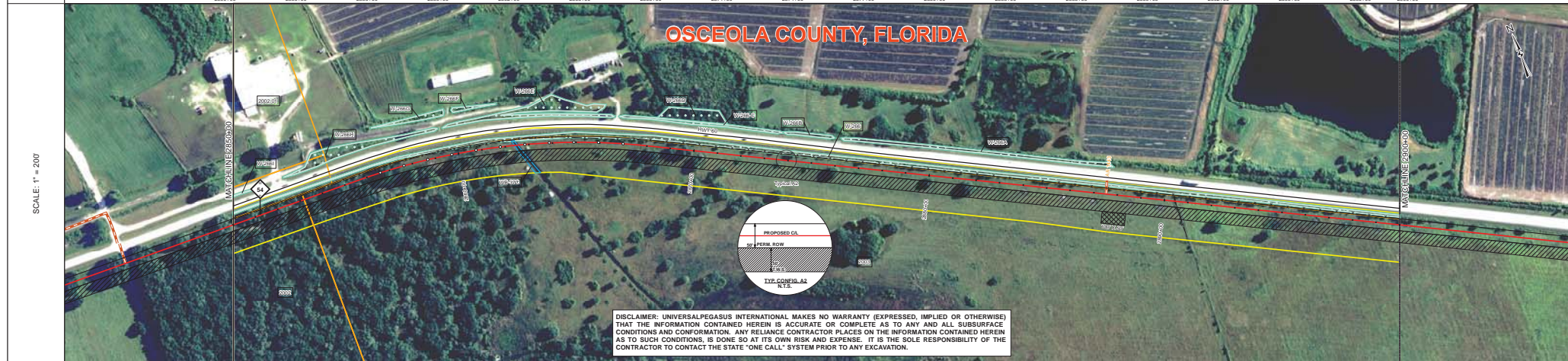
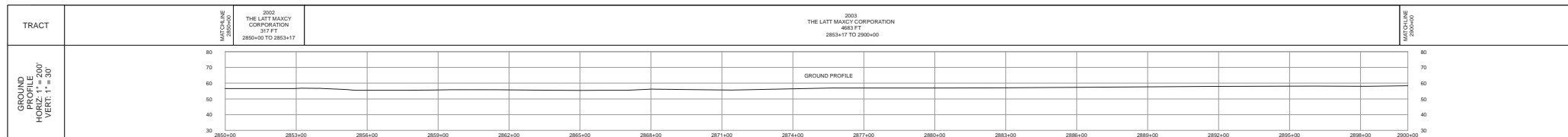
ENVIRONMENTAL DATA		STATIONS	
WATERBODIES/ETL CROSSINGS		2800+00	2850+00
WATERBODIES/ETL AVOIDANCE		2800+00	2850+00
PERMITTING/REGULATORY CONTROL		2800+00	2850+00
THREATENED AND ENDANGERED SPECIES		2800+00	2850+00
SPECIAL CONDITIONS		2800+00	2850+00

BILL OF MATERIALS		MISCELLANEOUS MATERIALS		TYPICAL DRAWINGS		GENERAL INFORMATION																			
ITEM NO.	QTY	UOM	RECN NUMBER	DESCRIPTION	QTY	UOM	RECN NUMBER	DESCRIPTION	DWG/FIELD BOOK NO.	TITLE															
1	1720	FT		36" O.D. x 0.520" W.T. API 5L X70 PS2, DSAW, 14-16 MILS FBE	4	EA		SET ON WEIGHTS	21040-510-TYP-2001	CATHODIC PROTECTION STD. SINGLE POINT TEST STATION, TYPE 1															
2	180	FT		36" O.D. x 0.420" W.T. API 5L X70 PS2, DSAW, 14-16 MILS FBE & 24-30 MILS ARO	4	EA		WARNING SIGNS	21040-510-TYP-2002	CATHODIC PROTECTION STD. FOREIGN PIPELINE CROSSING TEST STATION, TYPE 2															
3	2940	FT		36" O.D. x 0.750" W.T. API 5L X70 PS2, DSAW, 14-16 MILS FBE & 24-30 MILS ARO	2	EA		CP TEST STATION TYPE 1	21040-510-TYP-2003	TYPICAL OPEN CUT / BORE															
4	80	FF		36" O.D. x 0.420" W.T. API 5L X70 PS2, DSAW, 14-16 MILS FBE	0	EA		AERIAL MARKERS	21040-510-TYP-2012	CONTINUOUS CONCRETE COATING STANDARD FOR 36"/30" PIPELINE															
5	40	FF		36" O.D. x 0.750" W.T. API 5L X70 PS2, DSAW, 14-16 MILS FBE	1	EA		ANODE BED DEEP WELL	21040-510-TYP-2013	TYPICAL SADDLE BAG WEIGHTS															
FITTINGS SUMMARY		CONTINUOUS CONCRETE COATING		PIPE COATING DATA		SPECIAL NOTES		LEGEND		REVISIONS															
ITEM NO.	QTY	UOM	RECN NUMBER	DESCRIPTION	QTY	UOM	RECN NUMBER	DESCRIPTION	1. THE MINIMUM DEPTH OF COVER FOR THE PROJECT IS 36 INCHES. ADDITIONAL DEPTH OF COVER IS REQUIRED FOR ROAD AND WATERBODY CROSSINGS, AND IS TO BE IN ACCORDANCE WITH REFERENCED PERMIT DRAWINGS, SITE SPECIFIC DRAWINGS, OR CONSTRUCTION SPECIFICATIONS, WHICHEVER IS MORE STRINGENT.	2. THE BOUNDARIES OF ALL WORK AREAS WILL BE CLEARLY MARKED AND ALL WORK SHALL REMAIN WITHIN THE DESIGNATED WORK AREA.	3. THE REQUIRED STATE ONE CALL NOTIFICATION IS THE RESPONSIBILITY OF THE CONSTRUCTION CONTRACTOR.	4. THE CONTRACTOR SHALL ACCESS THE WORK AREA USING ONLY PUBLIC ROADS AND APPROVED ACCESS ROADS.	5. ADDITIONAL WARNING SIGNS MAY BE REQUIRED AS DETERMINED BY CONSTRUCTION CONTRACT.	6. MAP PROJECTION: NAD 1983 HARN STATE PLANE FLORIDA EAST FIPS 0801 FEET. VERTICAL DATUM: NAVD 83.	7. INDUCTION BEND QUANTITIES ALONG WITH THEIR DESCRIPTIONS ARE LOCATED ON DRAWING 21040-SG-FW-00001.	8. SEE ARM DRAWING PACKAGE FOR ANODE BED DEEP WELL.	PIPELINE ROUTE	CONCRETE	FOR FORECAST WEATHERLAND	FOR FORECAST WEATHERLAND					
1	1	EA		10" 3/8" VERTICAL FITTING					2. THE BAND NOT UTILIZED	THIS BAND NOT UTILIZED	THIS BAND NOT UTILIZED	THIS BAND NOT UTILIZED	THIS BAND NOT UTILIZED	THIS BAND NOT UTILIZED	THIS BAND NOT UTILIZED	THIS BAND NOT UTILIZED	THIS BAND NOT UTILIZED	THIS BAND NOT UTILIZED	THIS BAND NOT UTILIZED	THIS BAND NOT UTILIZED	THIS BAND NOT UTILIZED				
2	1	EA		90" 3/8" HORIZONTAL FITTING					21040-510-TYP-2016	AERIAL MARKER DETAIL	21040-510-TYP-2017	TYPICAL PIPELINE MARKER ASSEMBLY	21040-510-TYP-2018	PIPELINE MARKER "WARNING" DECAL	21040-510-TYP-2019	PIPELINE MARKER "WARNING" DECAL	NO.	DESCRIPTION	DATE	REV BY	APP BY	DRAWN BY:	MB	CONSTRUCTION PERMIT NO.	
QTY	UOM	DESCRIPTION	DESCRIPTION	DESCRIPTION	DESCRIPTION	DESCRIPTION	DESCRIPTION	DESCRIPTION	DESCRIPTION	DESCRIPTION	DESCRIPTION	DESCRIPTION	DESCRIPTION	DESCRIPTION	DESCRIPTION	DESCRIPTION	DESCRIPTION	DESCRIPTION	DESCRIPTION	DESCRIPTION	DESCRIPTION	DESCRIPTION	DESCRIPTION	DESCRIPTION	DESCRIPTION
1	EA	MLBY 6 (201)	INTERNAL COATING (YES/NO): NO																						

**FLORIDA SOUTHEAST CONNECTION PROJECT**  
 STA. 2800+00 TO 2850+00 DISCIPLINE: 03  
**FLORIDA SOUTHEAST CONNECTION ALIGNMENT SHEET 1**  
**OSCEOLA COUNTY, FLORIDA**

SCALE: 1" = 200'  
 21040-510-ALS-00061  
 REV. 1  
 SHEET 61





DISCLAIMER: UNIVERSALPEGASUS INTERNATIONAL MAKES NO WARRANTY (EXPRESSED, IMPLIED OR OTHERWISE) THAT THE INFORMATION CONTAINED HEREIN IS ACCURATE OR COMPLETE AS TO ANY AND ALL SUBSURFACE CONDITIONS AND CONFIRMATION. ANY RELIANCE CONTRACTOR PLACES ON THE INFORMATION CONTAINED HEREIN AS TO SUCH CONDITIONS, IS DONE SO AT ITS OWN RISK AND EXPENSE. IT IS THE SOLE RESPONSIBILITY OF THE CONTRACTOR TO CONTACT THE STATE "ONE CALL" SYSTEM PRIOR TO ANY EXCAVATION.

SURVEY DATA	STATIONING	MATCHLINE 2850+00		MATCHLINE 2905+00	
	MATERIAL	MATCHLINE 2850+00		MATCHLINE 2905+00	
ENGINEERING DATA	REFERENCE DRAWING	MATCHLINE 2850+00		MATCHLINE 2905+00	
	CLASS LOCATION	MATCHLINE 2850+00		MATCHLINE 2905+00	
ENVIRONMENTAL DATA	STATIONS	MATCHLINE 2850+00		MATCHLINE 2905+00	
	PERMITTING/REGULATORY CONTROL	MATCHLINE 2850+00		MATCHLINE 2905+00	

BILL OF MATERIALS			
ITEM NO.	QTY	UOM	DESCRIPTION
1	5000	FT	36" O.D. x 0.530" W.T., API 5L X70, FB2, DS2, 14-16 MILS FBE

MISCELLANEOUS MATERIALS			
ITEM NO.	QTY	UOM	DESCRIPTION
6	EA		SET ON WEIGHTS
7	EA		PIPELINE MARKERS
8	EA		WARNING SIGNS
9	EA		CP TEST STATION TYPE 1
10	EA		CP TEST STATION TYPE 2
11	EA		AERIAL MARKERS
12	EA		ANODE BED DEEP WELL

TYPICAL DRAWINGS			
DWG/FIELD BOOK NO.	TITLE	DATE	DESCRIPTION
21040-S10-TYP-20001	CATHODIC PROTECTION STD. SINGLE POINT TEST STATION, TYPE 1		
21040-S10-TYP-20002	CATHODIC PROTECTION STD. FOREIGN PIPELINE CROSSING TEST STATION, TYPE 2		
21040-S10-TYP-20008	CP TEST STATION TYPE 2		
21040-S10-TYP-20009	CP TEST STATION TYPE 2		
21040-S10-TYP-20012	CONTINUOUS CONCRETE COATING STANDARD FOR 36"/30" PIPELINE		
21040-S10-TYP-20013	TYPICAL SADDLE BAG WEIGHTS		
21040-S10-TYP-20014	WARNING SIGN DETAIL		
21040-S10-TYP-20015	AERIAL MARKER INSTALLATION DETAIL		
21040-S10-TYP-20016	AERIAL MARKER DETAIL		
21040-S10-TYP-20017	TYPICAL PIPELINE-MARKER ASSEMBLY		
21040-S10-TYP-20018	PIPELINE MARKER "WARNING" DECAL		

GENERAL INFORMATION			
1.	THE MINIMUM DEPTH OF COVER FOR THE PROJECT IS 36 INCHES. ADDITIONAL DEPTH OF COVER IS REQUIRED FOR ROAD AND WATERBODY CROSSINGS AND IS TO BE IN ACCORDANCE WITH REFERENCED PERMIT DRAWINGS, SITE SPECIFIC DRAWINGS, OR CONSTRUCTION SPECIFICATIONS, WHICHEVER IS MORE STRINGENT.		
2.	THE BOUNDARIES OF ALL WORK AREAS WILL BE CLEARLY MARKED AND ALL WORK SHALL REMAIN WITHIN THE DESIGNATED WORK AREA.		
3.	THE REQUIRED STATE ONE CALL NOTIFICATION IS THE RESPONSIBILITY OF THE CONSTRUCTION CONTRACTOR.		
4.	THE CONTRACTOR SHALL ACCESS THE WORK AREA USING ONLY PUBLIC ROADS AND APPROVED ACCESS ROADS.		
5.	ADDITIONAL WARNING SIGNS MAY BE REQUIRED AS DICTATED BY CONSTRUCTION CONTRACT.		
6.	MAP PROJECTION: NAD 1983 HARN STATE PLANE FLORIDA EAST FIPS 0801 FEET, VERTICAL DATUM: NAVD 83.		

LEGEND			
[Symbol]	PIPELINE ROUTE	[Symbol]	PERMITTING SIGN
[Symbol]	EDGE PIPE	[Symbol]	SHOULDER MARKING
[Symbol]	LINE PIPE	[Symbol]	ADDITIONAL TEMPORARY MARKING
[Symbol]	IN ROW PIPE	[Symbol]	NON-FORBIDDEN WETLAND
[Symbol]	INDUCTION BEND	[Symbol]	FORBIDDEN WETLAND
[Symbol]	36" O.D. DEEP WELL	[Symbol]	WATERBODY
[Symbol]	WARNING SIGN	[Symbol]	PAVED SURFACE
[Symbol]	MATERIAL PILE	[Symbol]	ROCK
[Symbol]	AERIAL MARKER	[Symbol]	ROADWAY BUFFER (POST/FEET)
[Symbol]	CP TEST STATION	[Symbol]	ROADWAY BUFFER (CONCRETE)
[Symbol]	CP TEST STATION IN CIV	[Symbol]	ROADWAY BUFFER (WOOD)
[Symbol]	PIPELINE MARKER	[Symbol]	ROADWAY BUFFER (MATERIAL)
[Symbol]	PIPELINE MISLAYOUT	[Symbol]	ROADWAY BUFFER (MATERIAL)
[Symbol]	ANODE BED DEEP WELL	[Symbol]	ROADWAY BUFFER (MATERIAL)
[Symbol]		[Symbol]	ROADWAY BUFFER (MATERIAL)

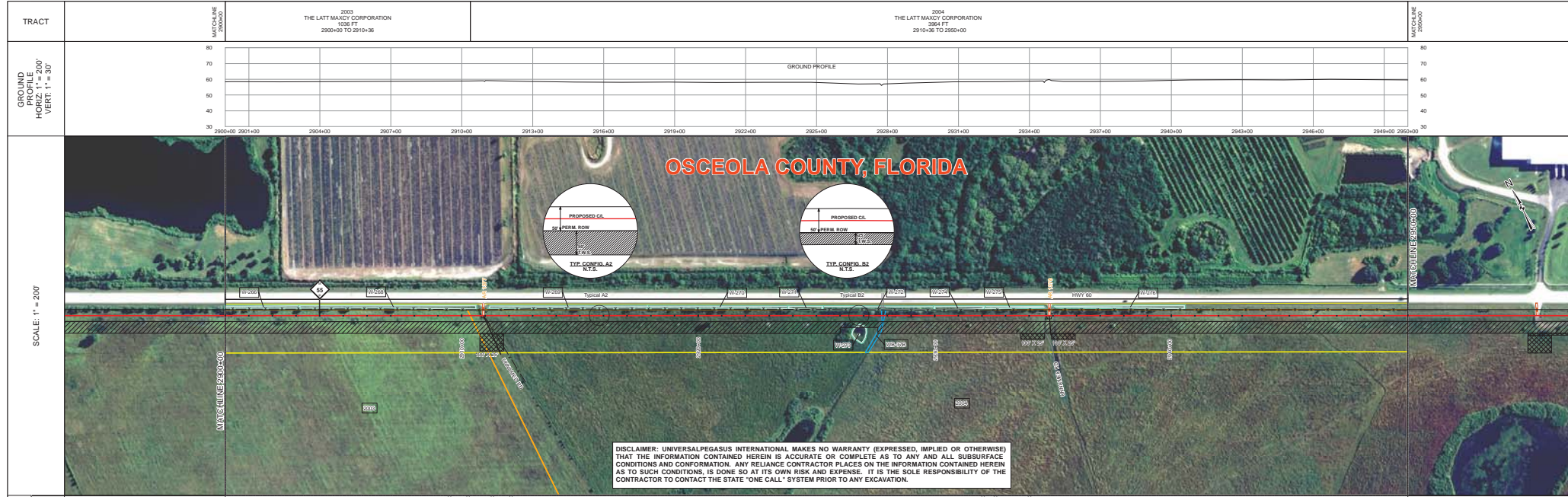
REVISIONS			
NO.	DESCRIPTION	DATE	REV. BY
1	IFC (UPDATE ENV. RE ROUTES, FOOTPRINT)	2016-04-08	MB MJ
0	ISSUED FOR CONSTRUCTION	2015-12-15	MB MJ

FLORIDA SOUTHEAST CONNECTION PROJECT  
 21040-S10-TYP-20018  
 DISCIPLINE: 03

FLORIDA SOUTHEAST CONNECTION  
 ALIGNMENT SHEET 1  
 OSCEOLA COUNTY, FLORIDA

SCALE: 1" = 200'  
 21040-S10-ALS-00062  
 REV. 1

SHEET 02



**DISCLAIMER: UNIVERSALPEGASUS INTERNATIONAL MAKES NO WARRANTY (EXPRESSED, IMPLIED OR OTHERWISE) THAT THE INFORMATION CONTAINED HEREIN IS ACCURATE OR COMPLETE AS TO ANY AND ALL SUBSURFACE CONDITIONS AND CONFORMATION. ANY RELIANCE CONTRACTOR PLACES ON THE INFORMATION CONTAINED HEREIN AS TO SUCH CONDITIONS, IS DONE SO AT ITS OWN RISK AND EXPENSE. IT IS THE SOLE RESPONSIBILITY OF THE CONTRACTOR TO CONTACT THE STATE "ONE CALL" SYSTEM PRIOR TO ANY EXCAVATION.**

STATIONING	MATERIAL	STATIONS	ENVIRONMENTAL DATA
2900+00			
2901+00			
2902+00			
2903+00			
2904+00			
2905+00			
2906+00			
2907+00			
2908+00			
2909+00			
2910+00			
2911+00			
2912+00			
2913+00			
2914+00			
2915+00			
2916+00			
2917+00			
2918+00			
2919+00			
2920+00			
2921+00			
2922+00			
2923+00			
2924+00			
2925+00			
2926+00			
2927+00			
2928+00			
2929+00			
2930+00			
2931+00			
2932+00			
2933+00			
2934+00			
2935+00			
2936+00			
2937+00			
2938+00			
2939+00			
2940+00			
2941+00			
2942+00			
2943+00			
2944+00			
2945+00			
2946+00			
2947+00			
2948+00			
2949+00			
2950+00			

BILL OF MATERIALS		MISCELLANEOUS MATERIALS		TYPICAL DRAWINGS		GENERAL INFORMATION	
ITEM NO.	QTY	UOM	RECN NUMBER	MATERIAL NUMBER	DESCRIPTION	DWG/FIELD BOOK NO.	TITLE
1	5000	FT			36" O.D. x 0.520" WT. API 5L X70, PSL2, DSWW, 14-16 MILS FBE		1. THE MINIMUM DEPTH OF COVER FOR THE PROJECT IS 36 INCHES. ADDITIONAL DEPTH OF COVER IS REQUIRED FOR ROAD AND WATERBODY CROSSINGS, AND IS TO BE IN ACCORDANCE WITH REFERENCED PERMIT DRAWINGS. SITE SPECIFIC DRAWINGS OR CONSTRUCTION SPECIFICATIONS, WHENEVER IS MORE STRINGENT. 2. THE BOUNDARIES OF ALL WORK AREAS WILL BE CLEARLY MARKED AND ALL WORK SHALL REMAIN WITHIN THE DESIGNATED WORK AREA. 3. THE REQUIRED STATE ONE CALL NOTIFICATION IS THE RESPONSIBILITY OF THE CONSTRUCTION CONTRACTOR. 4. THE CONTRACTOR SHALL ACCESS THE WORK AREA USING ONLY PUBLIC ROADS AND APPROVED ACCESS ROADS. 5. ADDITIONAL WARNING SIGNS MAY BE REQUIRED AS DICTATED BY CONSTRUCTION CONTRACT. 6. MAP PROJECTION: NAD 1983 HARN STATE PLANE FLORIDA, EAST TIPS 0001 FEET, VECTOR DATUM, NAD83.
FITTINGS SUMMARY		CONTINUOUS CONCRETE COATING		PIPE COATING DATA			

#### LEGEND

PROPOSED PIPE	EXISTING PIPE	PROPOSED SIGNAL
EXISTING SIGNAL	PROPOSED FENCE	PROPOSED TELEPHONE
PROPOSED POWER	EXISTING POWER	PROPOSED ROAD
EXISTING ROAD	PROPOSED FENCE	PROPOSED TELEPHONE
PROPOSED POWER	EXISTING POWER	PROPOSED ROAD

#### REVISIONS

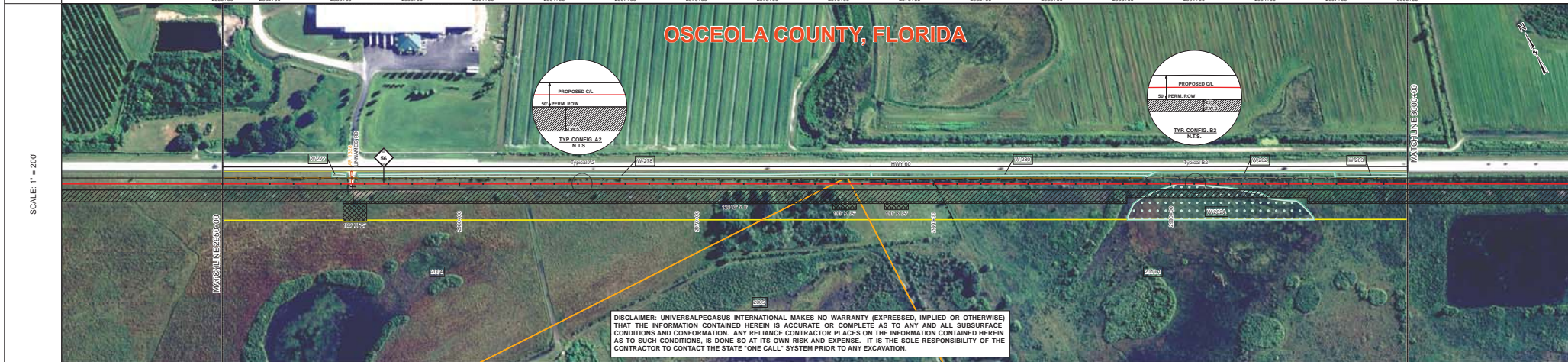
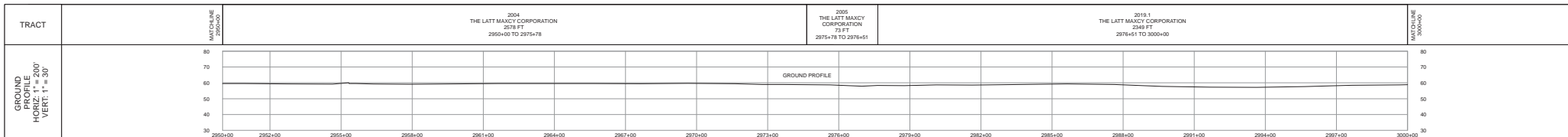
NO.	DESCRIPTION	DATE	REV BY	CHK BY	APP BY
1	IFC (UPDATE ENV. RE ROUTES, FOOTPRINT)	2016-04-08	MB	MJ	RG
0	ISSUED FOR CONSTRUCTION	2015-12-15	MB	MJ	RG

#### APPROVALS

DRIVEN BY: MB	CHECKED BY: MJ	PROJECT MANAGER: RG	PROJECT DEF. NO.:

**FLORIDA SOUTHEAST CONNECTION PROJECT**  
 STA. 2900+00 TO 2950+00  
**FLORIDA SOUTHEAST CONNECTION ALIGNMENT SHEET**  
**OSCEOLA COUNTY, FLORIDA**  
 SCALE: 1" = 200'      21040-510-ALS-00063      REV. 1  
 SHEET 63





SURVEY DATA		STATIONING	
MATCHLINE 2954+00		MATCHLINE 2954+00	
2954+00		3000+00	

ENGINEERING DATA		MATERIAL	
REFERENCE DRAWING		MATCHLINE 2954+00	
CLASS LOCATION		MATCHLINE 2954+00	
MINIMUM DEPTH OF COVER		MATCHLINE 2954+00	
CATHODIC PROTECTION		MATCHLINE 2954+00	
WETLAND CROSSING		MATCHLINE 2954+00	
WETLAND RESTRICTIONS		MATCHLINE 2954+00	
PERMITTING		MATCHLINE 2954+00	
ENVIRONMENTAL CONTROL		MATCHLINE 2954+00	
TOPOGRAPHY		MATCHLINE 2954+00	
THREATENED AND ENDANGERED SPECIES		MATCHLINE 2954+00	
TRADING CONSTRAINT		MATCHLINE 2954+00	
CONSTRAINT 1		MATCHLINE 2954+00	
CONSTRAINT 2		MATCHLINE 2954+00	
CONSTRAINT 3		MATCHLINE 2954+00	
CONSTRAINT 4		MATCHLINE 2954+00	

BILL OF MATERIALS				MISCELLANEOUS MATERIALS				TYPICAL DRAWINGS				GENERAL INFORMATION			
ITEM NO.	QTY	UOM	DESCRIPTION	QTY	UOM	DESCRIPTION	DWG/FIELD BOOK NO.	TITLE	1.	2.	3.	4.	5.	6.	
1	5000	FT	36" O.D. x 0.5300 W.T., API 5L X70, FIBERGLASS, 14-16 MILS FBE				21040-510-TYP-2001	CATHODIC PROTECTION STD. SINGLE POINT TEST STATION, TYPE 1	1. THE MINIMUM DEPTH OF COVER FOR THE PROJECT IS 36 INCHES. ADDITIONAL DEPTH OF COVER IS REQUIRED FOR ROAD AND WATERBODY CROSSINGS, AND IS TO BE IN ACCORDANCE WITH REFERENCED PERMIT DRAWINGS, SITE SPECIFIC DRAWINGS, OR CONSTRUCTION SPECIFICATIONS, WHICHEVER IS MORE STRINGENT.	2. THE BOUNDARIES OF ALL WORK AREAS WILL BE CLEARLY MARKED AND ALL WORK SHALL REMAIN WITHIN THE DESIGNATED WORK AREA.	3. THE REQUIRED STATE ONE CALL NOTIFICATION IS THE RESPONSIBILITY OF THE CONSTRUCTION CONTRACTOR.	4. THE CONTRACTOR SHALL ACCESS THE WORK AREA USING ONLY PUBLIC ROADS AND APPROVED ACCESS ROADS.	5. ADDITIONAL WARNING SIGNS MAY BE REQUIRED AS DICTATED BY CONSTRUCTION CONTRACT.	6. MAP PROJECTION: NAD 1983 HARN STATE PLANE FLORIDA EAST FIPS 0801 FEET, VECTOR DATUM, NAD 83.	
FITTINGS SUMMARY				CONTINUOUS CONCRETE COATING				SPECIAL NOTES							
ITEM NO.	QTY	UOM	DESCRIPTION	ITEM NO.	QTY	UOM	DESCRIPTION	1. INDUCTION BEND QUANTITIES ALONG WITH THEIR DESCRIPTIONS ARE LOCATED ON DRAWING 21040-SSE-FW-00001.							
PIPE ASSEMBLIES				PIPE COATING DATA				2. 'A' - SEE AERK DRAWING PACKAGE FOR ANODE BED DEEP WELL.							
QTY	UOM	DESCRIPTION	PIPE COATING: 14 MIL MINIMUM FBE AND 24 MIL MINIMUM ARO	QTY	UOM	DESCRIPTION	TYPICAL PIPELINE-MARKER ASSEMBLY								
INTERNAL COATING (YES/NO): NO				QTY	UOM	DESCRIPTION	TYPICAL PIPELINE-MARKER ASSEMBLY								

LEGEND				REVISIONS				APPROVALS				
PIPELINE ROUTE	PERMIT ROW	FORESTED WETLAND	WATERBODY	NO.	DESCRIPTION	DATE	REV BY	CHK BY	APP BY	DRAWN BY	MB	CONSTRUCTION PERMIT NO.
PIPELINE ROUTE	PERMIT ROW	FORESTED WETLAND	WATERBODY	1	IFC (UPDATE ENV. RE. ROUTES, FOOTPRINT)	2016-04-08	MB	MJ	RG	PROJECT MANAGER	RG	MAINTENANCE OPERATION REGION
PIPELINE ROUTE	PERMIT ROW	FORESTED WETLAND	WATERBODY	0	ISSUED FOR CONSTRUCTION	2015-12-15	MB	MJ	RG	PROJECT DEF. NO.		MIN. TEST PRESSURE 1816 PSI
PIPELINE ROUTE	PERMIT ROW	FORESTED WETLAND	WATERBODY									DESIGN PRESSURE 1440 PSI
PIPELINE ROUTE	PERMIT ROW	FORESTED WETLAND	WATERBODY	APPROVAL				COMPANY				
PIPELINE ROUTE	PERMIT ROW	FORESTED WETLAND	WATERBODY	UNIVERSALPEGASUS INTERNATIONAL				FLORIDA SOUTHEAST CONNECTION				
PIPELINE ROUTE	PERMIT ROW	FORESTED WETLAND	WATERBODY	FLORIDA SOUTHEAST CONNECTION PROJECT				ALIGNMENT SHEET 1				
PIPELINE ROUTE	PERMIT ROW	FORESTED WETLAND	WATERBODY	OSCEOLA COUNTY, FLORIDA								
PIPELINE ROUTE	PERMIT ROW	FORESTED WETLAND	WATERBODY	SCALE: 1" = 200'				21040-510-ALS-00064				
PIPELINE ROUTE	PERMIT ROW	FORESTED WETLAND	WATERBODY	REV. 1								