

**DISCLAIMER: UNIVERSALPEGASUS INTERNATIONAL MAKES NO WARRANTY (EXPRESSED, IMPLIED OR OTHERWISE) THAT THE INFORMATION CONTAINED HEREIN IS ACCURATE OR COMPLETE AS TO ANY AND ALL SUBSURFACE CONDITIONS AND CONFORMATION. ANY RELIANCE CONTRACTOR PLACES ON THE INFORMATION CONTAINED HEREIN AS TO SUCH CONDITIONS, IS DONE SO AT ITS OWN RISK AND EXPENSE. IT IS THE SOLE RESPONSIBILITY OF THE CONTRACTOR TO CONTACT THE STATE "ONE CALL" SYSTEM PRIOR TO ANY EXCAVATION.**

SURVEY DATA		STATIONING	
TRACT	3067 TRIPLE S RANCH, INC. 133 FT 5055+00 TO 5051+33 3068 TRIPLE S RANCH, INC. 526 FT 5051+33 TO 5057+09 3069 TRIPLE S RANCH, INC. 4201 FT 5057+09 TO 5100+00	MATCHLINE 5050+00	MATCHLINE 5100+00
ENGINEERING DATA		MATERIAL	
REFERENCE DRAWING		MATCHLINE 5050+00	MATCHLINE 5100+00
CLASS LOCATION			
MINIMUM DEPTH OF COVER			
INSTALLATION CATHODIC PROTECTION			
ENVIRONMENTAL DATA		STATIONS	
INTERSECTION W/ WETLAND CROSSINGS			
INTERSECTION W/ WETLAND VEGETATION			
PERMIT/REGULATORY CONTROL			
EROSION CONTROL CODE			
TRUCK WASHING CODE			
TOPSOIL SALVAGE			
THREATENED AND ENDANGERED SPECIES			
TRUCK CONSTRAINT			
CONSTRAINT 1			
CONSTRAINT 2			
CONSTRAINT 3			
CONSTRAINT 4			

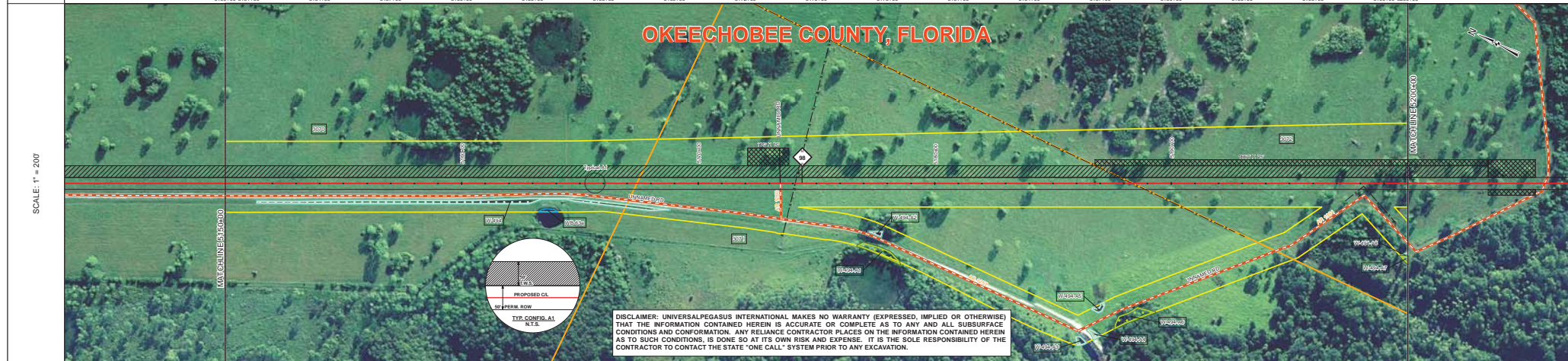
BILL OF MATERIALS				MISCELLANEOUS MATERIALS				TYPICAL DRAWINGS				GENERAL INFORMATION			
ITEM NO.	QTY	UOM	DESCRIPTION	QTY	UOM	DESCRIPTION	DWG/FIELD BOOK NO.	TITLE	1.	2.	3.	4.	5.	6.	
1	4990	FT	30" O.D. x 0.429 W.T. API 5L X70 F50L DRAM, 14-16 MILS FBE	13	EA	SET ON WEIGHTS	21040-510-TYP-2001	CATHODIC PROTECTION STD. SINGLE POINT TEST STATION, TYPE 1	1. THE MINIMUM DEPTH OF COVER FOR THE PROJECT IS 36 INCHES. ADDITIONAL DEPTH OF COVER IS REQUIRED FOR ROAD AND WATERBODY CROSSINGS AND IS TO BE IN ACCORDANCE WITH REFERENCED PERMIT DRAWINGS, SITE SPECIFIC DRAWINGS, OR CONSTRUCTION SPECIFICATIONS, WHICHEVER IS MORE STRINGENT.	2. THE BOUNDARIES OF ALL WORK AREAS WILL BE CLEARLY MARKED AND ALL WORK SHALL REMAIN WITHIN THE DESIGNATED WORK AREA.	3. THE REQUIRED STATE ONE CALL NOTIFICATION IS THE RESPONSIBILITY OF THE CONSTRUCTION CONTRACTOR.	4. THE CONTRACTOR SHALL ACCESS THE WORK AREA USING ONLY PUBLIC ROADS AND APPROVED ACCESS ROADS.	5. ADDITIONAL WARNING SIGNS MAY BE REQUIRED AS DICTATED BY CONSTRUCTION CONTRACT.	6. MAP PROJECTION: NAD 1983 HARN STATE PLANE FLORIDA EAST FIPS 0801 FEET. (VERTICAL DATUM: NAD 83)	
2	40	FT	30" O.D. x 0.514 W.T. API 5L X70 F50L DRAM, 14-16 MILS FBE & 24-30 MILS ARO	3	EA	WARNING SIGNS	21040-510-TYP-2002	CATHODIC PROTECTION STD. FOREIGN PIPELINE CROSSING TEST STATION, TYPE 2	7. THE REQUIRED STATE ONE CALL NOTIFICATION IS THE RESPONSIBILITY OF THE CONSTRUCTION CONTRACTOR.	8. THE BOUNDARIES OF ALL WORK AREAS WILL BE CLEARLY MARKED AND ALL WORK SHALL REMAIN WITHIN THE DESIGNATED WORK AREA.	9. THE REQUIRED STATE ONE CALL NOTIFICATION IS THE RESPONSIBILITY OF THE CONSTRUCTION CONTRACTOR.	10. THE CONTRACTOR SHALL ACCESS THE WORK AREA USING ONLY PUBLIC ROADS AND APPROVED ACCESS ROADS.	11. ADDITIONAL WARNING SIGNS MAY BE REQUIRED AS DICTATED BY CONSTRUCTION CONTRACT.	12. MAP PROJECTION: NAD 1983 HARN STATE PLANE FLORIDA EAST FIPS 0801 FEET. (VERTICAL DATUM: NAD 83)	
FITTINGS SUMMARY				CONTINUOUS CONCRETE COATING				SPECIAL NOTES							
ITEM NO.	QTY	UOM	DESCRIPTION	ITEM NO.	QTY	UOM	DESCRIPTION	21040-510-TYP-2013	CONTINUOUS CONCRETE COATING STANDARD FOR 36"/30" PIPELINE	1.	INDUCTION BEND QUANTITIES ALONG WITH THEIR DESCRIPTIONS ARE LOCATED ON DRAWING 21040-SSE-FW-00001.	2.	SEE ARK DRAWING PACKAGE FOR ANODE BED DEEP WELL.		
PIPE COATING DATA				PIPE COATING DATA				PIPELINE MARKER INSTALLATION DETAIL							
PIPE COATING: 14 MIL MINIMUM FBE AND 24 MIL MINIMUM ARO				PIPE COATING: 14 MIL MINIMUM FBE AND 24 MIL MINIMUM ARO				21040-510-TYP-2015							
SOUTH WELD COATING: 2 PART EPOXY				SOUTH WELD COATING: 2 PART EPOXY				21040-510-TYP-2016							
INTERNAL COATING (YES/NO): NO				INTERNAL COATING (YES/NO): NO				21040-510-TYP-2017							
								21040-510-TYP-2018							

LEGEND					REVISIONS					APPROVALS				
PIPELINE ROUTE	PROPOSED CANAL	PROPOSED CANAL	PROPOSED CANAL	PROPOSED CANAL	NO.	DESCRIPTION	DATE	REV BY	CHK BY	APP BY	MB	MB	CONSTRUCTION PERMIT NO.	
PIPELINE ROUTE	PROPOSED CANAL	PROPOSED CANAL	PROPOSED CANAL	PROPOSED CANAL	1	IFC (UPDATE ENV. RE-ROUTES, FOOT-PRINT)	2016-04-08	MB	MJ	MJ	MJ	MJ	MAINTENANCE OPERATION REGION	
PIPELINE ROUTE	PROPOSED CANAL	PROPOSED CANAL	PROPOSED CANAL	PROPOSED CANAL	0	ISSUED FOR CONSTRUCTION	2015-12-15	MB	MJ	MJ	MJ	MJ	MIN. TEST PRESSURE 1816 PSI	
PIPELINE ROUTE	PROPOSED CANAL	PROPOSED CANAL	PROPOSED CANAL	PROPOSED CANAL									DESIGN PRESSURE 1440 PSI	
PIPELINE ROUTE	PROPOSED CANAL	PROPOSED CANAL	PROPOSED CANAL	PROPOSED CANAL	APPROVAL					COMPANY				
PIPELINE ROUTE	PROPOSED CANAL	PROPOSED CANAL	PROPOSED CANAL	PROPOSED CANAL	UNIVERSALPEGASUS INTERNATIONAL					FLORIDA SOUTHEAST CONNECTION				
PIPELINE ROUTE	PROPOSED CANAL	PROPOSED CANAL	PROPOSED CANAL	PROPOSED CANAL	FLORIDA SOUTHEAST CONNECTION PROJECT					ALIGNMENT SHEET 1				
PIPELINE ROUTE	PROPOSED CANAL	PROPOSED CANAL	PROPOSED CANAL	PROPOSED CANAL	OKEECHOBEE COUNTY, FLORIDA					REV. 1				





TRACT	3070 TRIPLE S RANCH, INC. 1740 FT 5150+00 TO 5167+00	3071 TRIPLE S RANCH, INC. 2095 FT 5167+40 TO 5188+38	3072 SUNBREAK FARMS SMITH, LLC 1162 FT 5188+38 TO 5200+00
GROUND PROFILE			



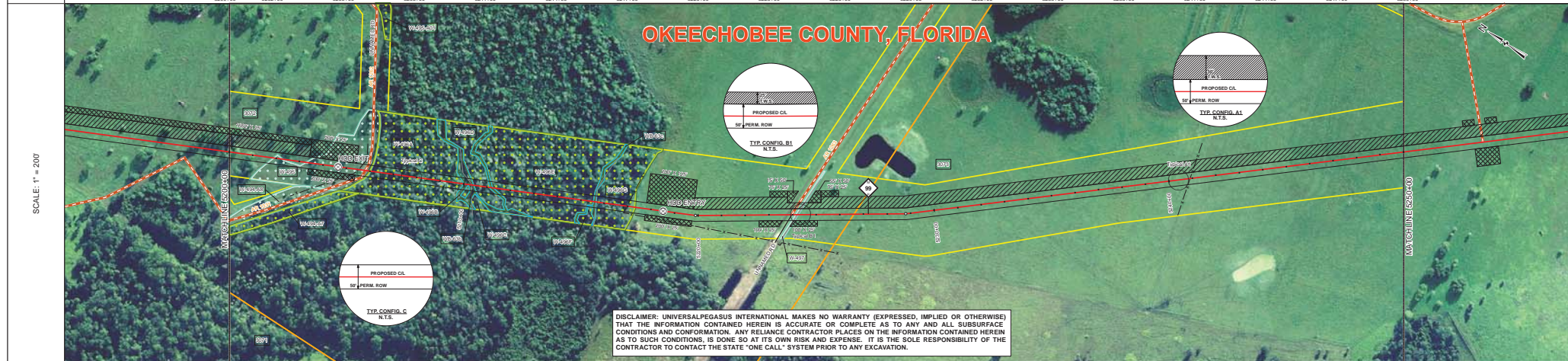
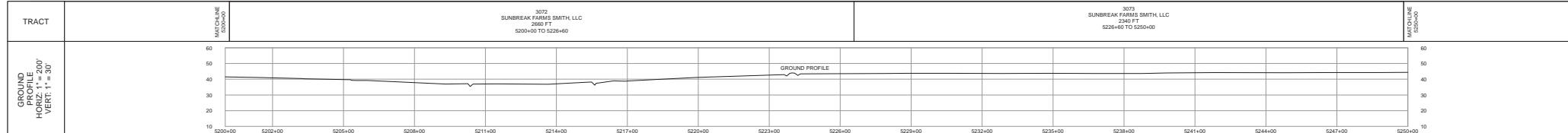
SURVEY DATA	STATIONING	MATERIAL	ENVIRONMENTAL DATA
STATIONING	5150+00 5151+00 5154+00 5157+00 5160+00 5163+00 5166+00 5169+00 5172+00 5175+00 5178+00 5181+00 5184+00 5187+00 5190+00 5193+00 5196+00 5199+00 5200+00	MATERIAL	ENVIRONMENTAL DATA
STATIONS	5150+00 5151+00 5154+00 5157+00 5160+00 5163+00 5166+00 5169+00 5172+00 5175+00 5178+00 5181+00 5184+00 5187+00 5190+00 5193+00 5196+00 5199+00 5200+00	ENVIRONMENTAL DATA	ENVIRONMENTAL DATA

BILL OF MATERIALS				MISCELLANEOUS MATERIALS				TYPICAL DRAWINGS				GENERAL INFORMATION			
ITEM NO.	QTY	UOM	DESCRIPTION	QTY	UOM	DESCRIPTION	DWG/FIELD BOOK NO.	TITLE	1.	2.	3.	4.	5.	6.	
Z	5000	FT	30" O.D. x 0.429 W.T., API 5L X70, FBEL, DSAM, 14-16 MILS FBE	0	EA	SET ON WEIGHTS	21040-510-TYP-20001	CATHODIC PROTECTION STD. SINGLE POINT TEST STATION, TYPE 1	1. THE MINIMUM DEPTH OF COVER FOR THE PROJECT IS 36 INCHES. ADDITIONAL DEPTH OF COVER IS REQUIRED FOR ROAD AND WATERBODY CROSSINGS, AND IS TO BE IN ACCORDANCE WITH REFERENCED PERMIT DRAWINGS, SITE SPECIFIC DRAWINGS, OR CONSTRUCTION SPECIFICATIONS, WHICHEVER IS MORE STRINGENT.	2. THE BOUNDARIES OF ALL WORK AREAS WILL BE CLEARLY MARKED AND ALL WORK SHALL REMAIN WITHIN THE DESIGNATED WORK AREA.	3. THE REQUIRED STATE ONE CALL NOTIFICATION IS THE RESPONSIBILITY OF THE CONSTRUCTION CONTRACTOR.	4. THE CONTRACTOR SHALL ACCESS THE WORK AREA USING ONLY PUBLIC ROADS AND APPROVED ACCESS ROADS.	5. ADDITIONAL WARNING SIGNS MAY BE REQUIRED AS DICTATED BY CONSTRUCTION CONTRACT.	6. MAP PROJECTION: NAD 1983 HARN STATE PLANE FLORIDA EAST FIPS 0801 FEET, VERTICAL DATUM: NAVD 83.	

FITTINGS SUMMARY				CONTINUOUS CONCRETE COATING				PIPE COATING DATA			
ITEM NO.	QTY	UOM	DESCRIPTION	QTY	UOM	DESCRIPTION	ITEM NO.	QTY	UOM	DESCRIPTION	
							21040-510-TYP-20013				

LEGEND			
	PIPELINE ROUTE		WETLAND
	AERIAL MARKER		ROAD

REVISIONS				APPROVALS			
NO.	DESCRIPTION	DATE	REV BY	CHK BY	APP BY	CONSTRUCTION	PERMIT NO.
1	IFC (UPDATE ENV. RE-ROUTES, FOOT-PRINT)	2016-04-08	MB	MJ	RG	PROJECT MANAGER	MAINTENANCE OPERATION REGION
0	ISSUED FOR CONSTRUCTION	2015-12-15	MB	MJ	RG	PROJECT DEF. NO.	MIN. TEST PRESSURE 1816 PSI
APPROVAL				COMPANY			
FLORIDA SOUTHEAST CONNECTION PROJECT 2140-510-ALS-00109 FLORIDA SOUTHEAST CONNECTION ALIGNMENT SHEET 1 OKEECHOBEE COUNTY, FLORIDA SCALE: 1" = 200' 21040-510-ALS-00109 REV. 1							



DISCLAIMER: UNIVERSALPEGASUS INTERNATIONAL MAKES NO WARRANTY (EXPRESSED, IMPLIED OR OTHERWISE) THAT THE INFORMATION CONTAINED HEREIN IS ACCURATE OR COMPLETE AS TO ANY AND ALL SUBSURFACE CONDITIONS AND CONFORMATION. ANY RELIANCE CONTRACTOR PLACES ON THE INFORMATION CONTAINED HEREIN AS TO SUCH CONDITIONS, IS DONE SO AT ITS OWN RISK AND EXPENSE. IT IS THE SOLE RESPONSIBILITY OF THE CONTRACTOR TO CONTACT THE STATE "ONE CALL" SYSTEM PRIOR TO ANY EXCAVATION.

SURVEY DATA		STATIONING	
MATCHLINE 5200+00		MATCHLINE 5250+00	

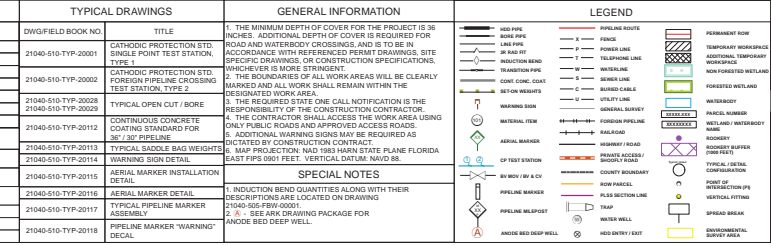
  

ENGINEERING DATA		MATERIAL	
REFERENCE DRAWING	21040-S05-HDW-12013		
CLASS LOCATION	Class 1		
MINIMUM DEPTH OF COVER	3'	SEE REF DWG	3'
INSTALLATION CATHODIC PROTECTION	SEE REF DWG		
WATERBODIES/WETLAND CROSSINGS	SEE REF DWG		
WATERBODIES/WETLAND LENGTH	SEE REF DWG		

ENVIRONMENTAL DATA		STATIONS	
PERMIT/REG. CONTROL	EPA/STATE CONTROL		
THREATENED AND ENDANGERED SPECIES	NONE LISTED		
THREAT CONSTRAINT	NONE		
CONSTRAINT 1	NONE		
CONSTRAINT 2	NONE		
CONSTRAINT 3	NONE		
CONSTRAINT 4	NONE		

BILL OF MATERIALS				MISCELLANEOUS MATERIALS				TYPICAL DRAWINGS				GENERAL INFORMATION			
ITEM NO.	QTY	UOM	DESCRIPTION	QTY	UOM	DESCRIPTION	DWG/FIELD BOOK NO.	TITLE	1.	2.	3.	4.	5.	6.	
7	1343	FT	30" O.D. x 0.429 W.T. APTSL, 37N, FIBL, DSAW, 14-18 MILS FBE			SET ON WEIGHTS	21040-510-TYP-2001	CATHODIC PROTECTION STD. SINGLE POINT TEST STATION, TYPE 1	1. THE MINIMUM DEPTH OF COVER FOR THE PROJECT IS 36 INCHES. ADDITIONAL DEPTH OF COVER IS REQUIRED FOR ROAD AND WATERBODY CROSSINGS AND IS TO BE IN ACCORDANCE WITH REFERENCED PERMIT DRAWINGS. SITE SPECIFIC DRAWINGS OR CONSTRUCTION SPECIFICATIONS, WHICHEVER IS MORE STRINGENT.	2. THE BOUNDARIES OF ALL WORK AREAS WILL BE CLEARLY MARKED AND ALL WORK SHALL REMAIN WITHIN THE DESIGNATED WORK AREA.	3. THE REQUIRED STATE ONE CALL NOTIFICATION IS THE RESPONSIBILITY OF THE CONSTRUCTION CONTRACTOR.	4. THE CONTRACTOR SHALL ACCESS THE WORK AREA USING ONLY PUBLIC ROADS AND APPROVED ACCESS ROADS.	5. ADDITIONAL WARNING SIGNS MAY BE REQUIRED AS DICTATED BY CONSTRUCTION CONTRACT.	6. MAP PROJECTION: NAD 1983 HARN STATE PLANE FLORIDA EAST BY ZIP 0801 FEET. VERTICAL DATUM: NAVD 83.	
10	1387	FT	30" O.D. x 0.617 W.T. APTSL, 37N, FIBL, DSAW, 14-18 MILS FBE & 24-30 MILS ARO			WARNING SIGNS	21040-510-TYP-2002	CATHODIC PROTECTION STD. FOREIGN PIPELINE CROSSING TEST STATION, TYPE 2							
11	160	FT	30" O.D. x 0.514 W.T. APTSL, 37N, FIBL, DSAW, 14-18 MILS FBE			CP TEST STATION TYPE 1	21040-510-TYP-2012	CONTINUOUS CONCRETE COATING STANDARD FOR 36"/30" PIPELINE							
FITTINGS SUMMARY				CONTINUOUS CONCRETE COATING				SPECIAL NOTES							
ITEM NO.	QTY	UOM	DESCRIPTION	ITEM NO.	QTY	UOM	DESCRIPTION	21040-510-TYP-2013	TYPICAL SADDLE BAG WEIGHTS	1. INDUCTION BEND QUANTITIES ALONG WITH THEIR DESCRIPTIONS ARE LOCATED ON DRAWING 21040-S05-FE-00001.					
1	EA		10" 3R VERTICAL FITTING	21040-510-TYP-2014			AERIAL MARKER INSTALLATION DETAIL	21040-510-TYP-2015	AERIAL MARKER DETAIL	2. A - SEE ARK DRAWING PACKAGE FOR ANODE BED DEEP WELL.					
1	EA		8" 3R VERTICAL FITTING	21040-510-TYP-2016			TYPICAL PIPELINE ASSEMBLY	21040-510-TYP-2017	PIPELINE MARKER ASSEMBLY						
PIPE COATING DATA				PIPE COATING DATA				PIPELINE MARKER "WARNING" DECAL							
QTY	UOM	DESCRIPTION		QTY	UOM	DESCRIPTION		QTY				UOM	DESCRIPTION		
		PIPE COATING: 14 MIL MINIMUM FBE AND 24 MIL MINIMUM ARO				PIPE COATING: 14 MIL MINIMUM FBE AND 24 MIL MINIMUM ARO							INTERNAL COATING (YES/NO): NO		



REVISIONS				APPROVALS			
NO.	DESCRIPTION	DATE	REV BY	CHK BY	APP BY	DESIGNER	PERMIT NO.
1	IFC (UPDATE ENV. RE-ROUTES, FOOT-PRINT)	2016-04-08	MB	MJ	RG	PROJECT MANAGER	MN TEST PRESSURE 1816 PSI
2	ISSUED FOR CONSTRUCTION	2015-12-15	MB	MJ	RG	PROJECT DEF. NO.	DESIGN PRESSURE 1440 PSI

APPROVAL		COMPANY	
	UNIVERSAL PEGASUS INTERNATIONAL		UNIVERSAL PEGASUS INTERNATIONAL

FLORIDA SOUTHEAST CONNECTION PROJECT  
 STA. 5200+00 TO 5250+00  
 FLORIDA SOUTHEAST CONNECTION ALIGNMENT SHEET  
 OKEECHOBEE COUNTY, FLORIDA

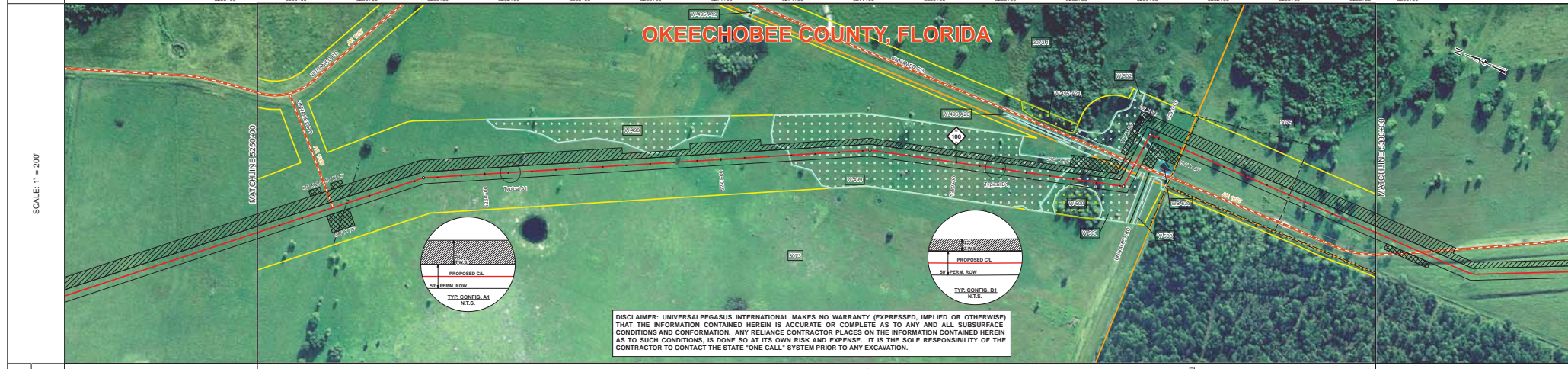
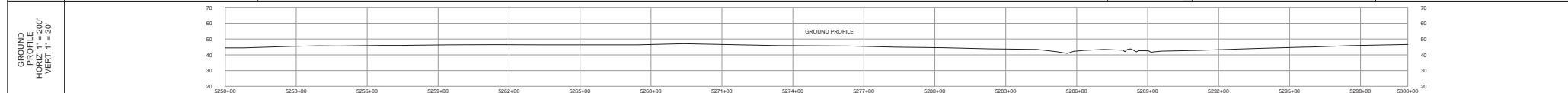
SCALE: 1" = 200'

21040-510-ALS-00110

REV. 1



TRACT: 3073 SUNBREAK FARMS SMITH, LLC 5265+00 TO 5287+83; 3073.1 SUNBREAK FARMS SMITH, LLC 5287+83 TO 5291+11; 3075 SUNBREAK FARMS SMITH, LLC 5291+11 TO 5300+00



**DISCLAIMER: UNIVERSALPEGASUS INTERNATIONAL MAKES NO WARRANTY (EXPRESSED, IMPLIED OR OTHERWISE) THAT THE INFORMATION CONTAINED HEREIN IS ACCURATE OR COMPLETE AS TO ANY AND ALL SUBSURFACE CONDITIONS AND CONFORMATION. ANY RELIANCE CONTRACTOR PLACES ON THE INFORMATION CONTAINED HEREIN AS TO SUCH CONDITIONS, IS DONE SO AT ITS OWN RISK AND EXPENSE. IT IS THE SOLE RESPONSIBILITY OF THE CONTRACTOR TO CONTACT THE STATE "ONE CALL" SYSTEM PRIOR TO ANY EXCAVATION.**

SURVEY DATA		STATIONING	
MATCHLINE 5250+00	MATCHLINE 5300+00	5250+00	5300+00

ENGINEERING DATA		MATERIAL	
REFERENCE DRAWING	CLASS LOCATION	MINIMUM DEPTH OF COVER	INSTALLATION CATHODIC PROTECTION
INTERSECTION/WETLAND CROSSINGS	INTERSECTION/WETLAND LENGTH	PERMIT CONTROL	EROSION CONTROL CODE
THRESHOLD AND ENDANGERED SPECIES	THRESHOLD CONSTRAINT	CONSTRAINT 1	CONSTRAINT 2
CONSTRAINT 3	CONSTRAINT 4	CONSTRAINT 5	CONSTRAINT 6

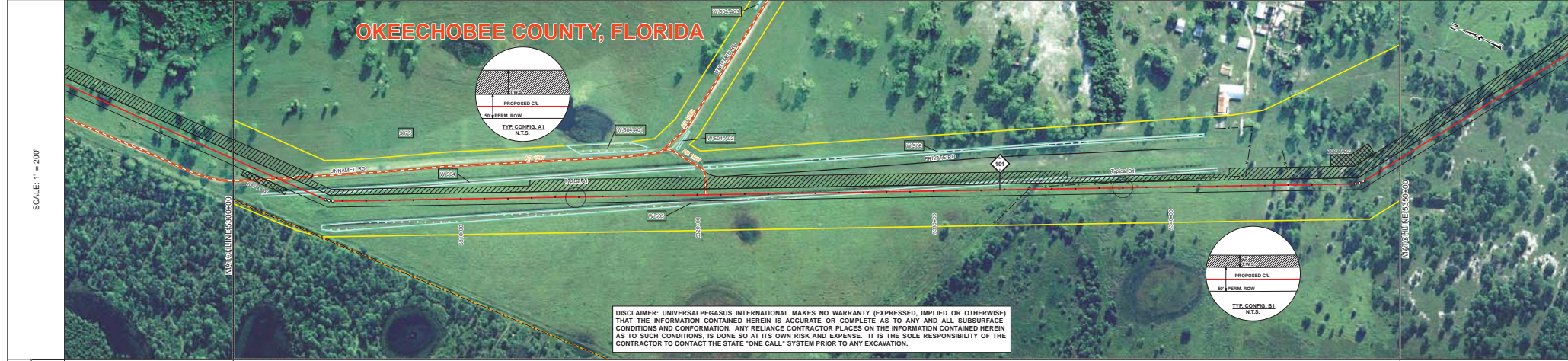
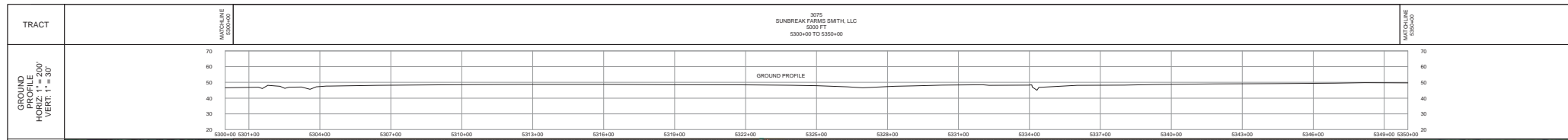
ENVIRONMENTAL DATA		STATIONS	
STATION 1	STATION 2	STATION 3	STATION 4

BILL OF MATERIALS				MISCELLANEOUS MATERIALS				TYPICAL DRAWINGS		GENERAL INFORMATION	
ITEM NO.	QTY	UOM	DESCRIPTION	QTY	UOM	DESCRIPTION	DWG/FIELD BOOK NO.	TITLE	1. THE MINIMUM DEPTH OF COVER FOR THE PROJECT IS 36 INCHES. ADDITIONAL DEPTH OF COVER IS REQUIRED FOR ROAD AND WATERBODY CROSSINGS AND IS TO BE IN ACCORDANCE WITH REFERENCED PERMIT DRAWINGS, SITE SPECIFIC DRAWINGS, OR CONSTRUCTION SPECIFICATIONS, WHICHEVER IS MORE STRINGENT.		
1	4990	FT	30" O.D. x 0.429 W.T. - API 5L X70 PSL2 DRAM, 14-16 MILS FBE	EA		SET ON WEIGHTS	21040-510-TYP-2001	CATHODIC PROTECTION STD. SINGLE POINT TEST STATION, TYPE 1	2. THE BOUNDARIES OF ALL WORK AREAS WILL BE CLEARLY MARKED AND ALL WORK SHALL REMAIN WITHIN THE DESIGNATED WORK AREA.		
2	40	FT	30" O.D. x 0.514 W.T. - API 5L X70 PSL2 DRAM, 14-16 MILS FBE & 24-30 MILS ARD	EA		WARNING SIGNS	21040-510-TYP-2002	CATHODIC PROTECTION STD. FOREIGN PIPELINE CROSSING TEST STATION, TYPE 2	3. THE REQUIRED STATE ONE CALL NOTIFICATION IS THE RESPONSIBILITY OF THE CONSTRUCTION CONTRACTOR.		
				EA		CP TEST STATION TYPE 1	21040-510-TYP-2013	CONTINUOUS CONCRETE COATING STANDARD FOR 36" / 30" PIPELINE	4. THE CONTRACTOR SHALL ACCESS THE WORK AREA USING ONLY PUBLIC ROADS AND APPROVED ACCESS ROADS.		
				EA		CP TEST STATION TYPE 2	21040-510-TYP-2014	TYPICAL OPEN CUT / BORE	5. ADDITIONAL WARNING SIGNS MAY BE REQUIRED AS DICTATED BY CONSTRUCTION CONTRACT.		
				EA		AERIAL MARKERS	21040-510-TYP-2015	AERIAL MARKER INSTALLATION DETAIL	6. MAP PROJECTION: NAD 1983 HARN STATE PLANE FLORIDA EAST FIPS 0801 FEET, VECTOR DATUM: NAD 83.		
				EA		ANODE BED DEEP WELL	21040-510-TYP-2016	AERIAL MARKER DETAIL	SPECIAL NOTES		
				EA			21040-510-TYP-2017	TYPICAL PIPELINE MARKER ASSEMBLY	1. INDUCTION BEND QUANTITIES ALONG WITH THEIR DESCRIPTIONS ARE LOCATED ON DRAWING 21040-SSE-FW-00001.		
				EA			21040-510-TYP-2018	PIPELINE MARKER "WARNING" DECAL	2. SEE AERIAL DRAWING PACKAGE FOR ANODE BED DEEP WELL.		

FITTINGS SUMMARY				CONTINUOUS CONCRETE COATING				PIPE COATING DATA	
ITEM NO.	QTY	UOM	DESCRIPTION	QTY	UOM	DESCRIPTION	PIPE COATING: 14 MIL MINIMUM FBE AND 24 MIL MINIMUM ARD	INTERNAL COATING (YES/NO): NO	

LEGEND				REVISIONS				APPROVALS			
PIPELINE ROUTE	FENCE	FORBIDDEN WETLAND	WATERBODY	NO.	DESCRIPTION	DATE	REV BY	CHK BY	APP BY	MB	CONSTRUCTION PERMIT NO.
ROAD	TELEPHONE LINE	NON-FORBIDDEN WETLAND	ROAD BUFFER (FEET)	1	IFC (UPDATE ENV. RE-ROUTES, FOOT-PRINT)	2016-04-08	MB	MJ	RG	MJ	MAINTENANCE OPERATION REGION
FORBIDDEN WETLAND	WATERLINE	WATERBODY	ROAD BUFFER (FEET)	2	ISSUED FOR CONSTRUCTION	2015-12-15	MB	MJ	RG	MJ	MIN. TEST PRESSURE 1816 PSI
FORBIDDEN WETLAND	WATERLINE	WATERBODY	ROAD BUFFER (FEET)	3							DESIGN PRESSURE 1440 PSI
FORBIDDEN WETLAND	WATERLINE	WATERBODY	ROAD BUFFER (FEET)	APPROVAL				COMPANY			
FORBIDDEN WETLAND	WATERLINE	WATERBODY	ROAD BUFFER (FEET)	UNIVERSALPEGASUS INTERNATIONAL				FLORIDA SOUTHEAST CONNECTION			

FLORIDA SOUTHEAST CONNECTION PROJECT  
 STA: 5250+00 TO 5300+00  
 DISCIPLINE: 03  
 FLORIDA SOUTHEAST CONNECTION ALIGNMENT SHEET  
 OKEECHOBEE COUNTY, FLORIDA  
 SCALE: 1" = 200'  
 21040-510-ALS-00111  
 REV. 1  
 SHEET 111



**DISCLAIMER: UNIVERSALPEGASUS INTERNATIONAL MAKES NO WARRANTY (EXPRESSED, IMPLIED OR OTHERWISE) THAT THE INFORMATION CONTAINED HEREIN IS ACCURATE OR COMPLETE AS TO ANY AND ALL SUBSURFACE CONDITIONS AND CONFORMATION. ANY RELIANCE CONTRACTOR PLACES ON THE INFORMATION CONTAINED HEREIN AS TO SUCH CONDITIONS, IS DONE SO AT ITS OWN RISK AND EXPENSE. IT IS THE SOLE RESPONSIBILITY OF THE CONTRACTOR TO CONTACT THE STATE "ONE CALL" SYSTEM PRIOR TO ANY EXCAVATION.**

SURVEY DATA		STATIONING	
MATCHLINE 5300+00		MATCHLINE 5300+00	
MATCHLINE 5350+00		MATCHLINE 5350+00	

ENGINEERING DATA		MATERIAL	
MATCHLINE 5300+00		MATCHLINE 5300+00	
MATCHLINE 5350+00		MATCHLINE 5350+00	
MATCHLINE 5300+00		MATCHLINE 5300+00	
MATCHLINE 5350+00		MATCHLINE 5350+00	

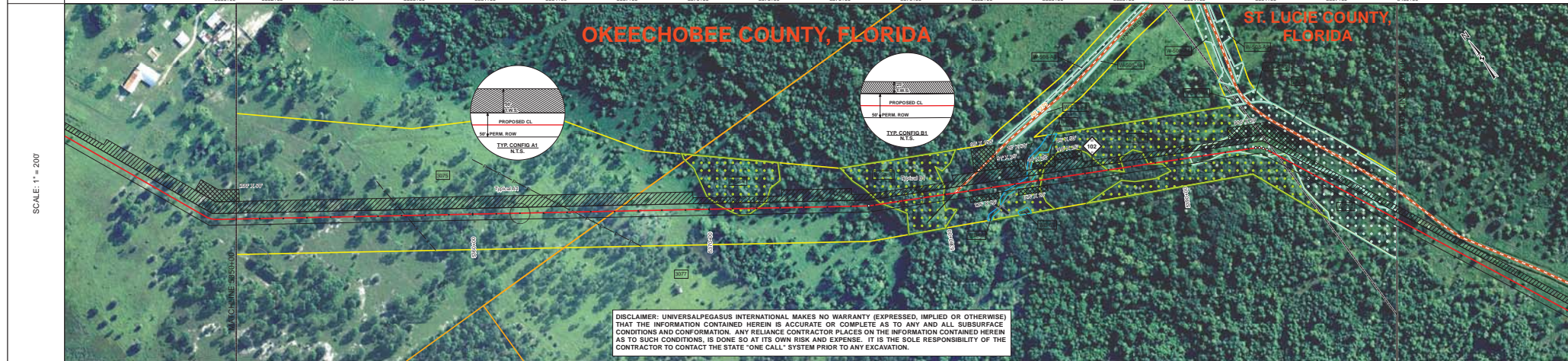
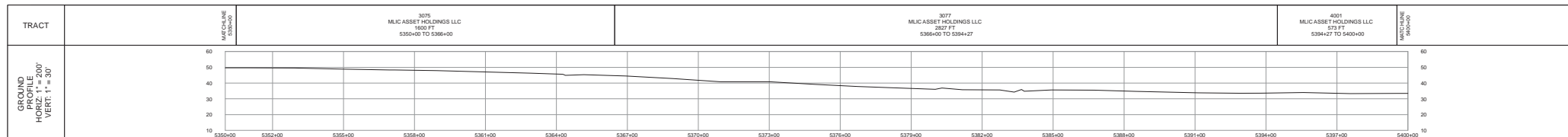
ENVIRONMENTAL DATA		STATIONS	
MATCHLINE 5300+00		MATCHLINE 5300+00	
MATCHLINE 5350+00		MATCHLINE 5350+00	
MATCHLINE 5300+00		MATCHLINE 5300+00	
MATCHLINE 5350+00		MATCHLINE 5350+00	

BILL OF MATERIALS				MISCELLANEOUS MATERIALS				TYPICAL DRAWINGS				GENERAL INFORMATION										
ITEM NO.	QTY	UOM	DESCRIPTION	QTY	UOM	DESCRIPTION	DWG/FIELD BOOK NO.	TITLE	DWG/FIELD BOOK NO.	TITLE	1.	THE MINIMUM DEPTH OF COVER FOR THE PROJECT IS 36 INCHES. ADDITIONAL DEPTH OF COVER IS REQUIRED FOR ROAD AND WATERBODY CROSSINGS, AND IS TO BE IN ACCORDANCE WITH REFERENCED PERMIT DRAWINGS, SITE SPECIFIC DRAWINGS, OR CONSTRUCTION SPECIFICATIONS, WHICHEVER IS MORE STRINGENT.	2.	THE BOUNDARIES OF ALL WORK AREAS WILL BE CLEARLY MARKED AND ALL WORK SHALL REMAIN WITHIN THE DESIGNATED WORK AREA.	3.	THE REQUIRED STATE ONE CALL NOTIFICATION IS THE RESPONSIBILITY OF THE CONSTRUCTION CONTRACTOR.	4.	THE CONTRACTOR SHALL ACCESS THE WORK AREA USING ONLY PUBLIC ROADS AND APPROVED ACCESS ROADS.	5.	ADDITIONAL WARNING SIGNS MAY BE REQUIRED AS DICTATED BY CONSTRUCTION CONTRACT.	6.	MAP PROJECTION: NAD 1983 HARN STATE PLANE FLORIDA EAST FIPS 0801 FEET, VERTICAL DATUM: NAVD 83.
7	180	FT	30" O.D. x 0.429 W.T. - API 5L X70 PSL2, DRAM, 14-16 MILS FBE	EA	EA	SET ON WEIGHTS	21040-510-TYP-2001	CATHODIC PROTECTION STD. SINGLE POINT TEST STATION, TYPE 1	21040-510-TYP-2001	CATHODIC PROTECTION STD. SINGLE POINT TEST STATION, TYPE 1	1.	THE MINIMUM DEPTH OF COVER FOR THE PROJECT IS 36 INCHES. ADDITIONAL DEPTH OF COVER IS REQUIRED FOR ROAD AND WATERBODY CROSSINGS, AND IS TO BE IN ACCORDANCE WITH REFERENCED PERMIT DRAWINGS, SITE SPECIFIC DRAWINGS, OR CONSTRUCTION SPECIFICATIONS, WHICHEVER IS MORE STRINGENT.	2.	THE BOUNDARIES OF ALL WORK AREAS WILL BE CLEARLY MARKED AND ALL WORK SHALL REMAIN WITHIN THE DESIGNATED WORK AREA.	3.	THE REQUIRED STATE ONE CALL NOTIFICATION IS THE RESPONSIBILITY OF THE CONSTRUCTION CONTRACTOR.	4.	THE CONTRACTOR SHALL ACCESS THE WORK AREA USING ONLY PUBLIC ROADS AND APPROVED ACCESS ROADS.	5.	ADDITIONAL WARNING SIGNS MAY BE REQUIRED AS DICTATED BY CONSTRUCTION CONTRACT.	6.	MAP PROJECTION: NAD 1983 HARN STATE PLANE FLORIDA EAST FIPS 0801 FEET, VERTICAL DATUM: NAVD 83.
8	120	FT	30" O.D. x 0.514 W.T. - API 5L X70 PSL2, DRAM, 14-16 MILS FBE & 24-30 MILS DRAM	EA	EA	WARNING SIGNS	21040-510-TYP-2002	CATHODIC PROTECTION STD. FOREIGN PIPELINE CROSSING TEST STATION, TYPE 2	21040-510-TYP-2002	CATHODIC PROTECTION STD. FOREIGN PIPELINE CROSSING TEST STATION, TYPE 2	1.	THE MINIMUM DEPTH OF COVER FOR THE PROJECT IS 36 INCHES. ADDITIONAL DEPTH OF COVER IS REQUIRED FOR ROAD AND WATERBODY CROSSINGS, AND IS TO BE IN ACCORDANCE WITH REFERENCED PERMIT DRAWINGS, SITE SPECIFIC DRAWINGS, OR CONSTRUCTION SPECIFICATIONS, WHICHEVER IS MORE STRINGENT.	2.	THE BOUNDARIES OF ALL WORK AREAS WILL BE CLEARLY MARKED AND ALL WORK SHALL REMAIN WITHIN THE DESIGNATED WORK AREA.	3.	THE REQUIRED STATE ONE CALL NOTIFICATION IS THE RESPONSIBILITY OF THE CONSTRUCTION CONTRACTOR.	4.	THE CONTRACTOR SHALL ACCESS THE WORK AREA USING ONLY PUBLIC ROADS AND APPROVED ACCESS ROADS.	5.	ADDITIONAL WARNING SIGNS MAY BE REQUIRED AS DICTATED BY CONSTRUCTION CONTRACT.	6.	MAP PROJECTION: NAD 1983 HARN STATE PLANE FLORIDA EAST FIPS 0801 FEET, VERTICAL DATUM: NAVD 83.
FITTINGS SUMMARY				CONTINUOUS CONCRETE COATING				SPECIAL NOTES														
ITEM NO.	QTY	UOM	DESCRIPTION	QTY	UOM	DESCRIPTION	21040-510-TYP-2011	TYPICAL SCALE BAG WEIGHTS	21040-510-TYP-2011	TYPICAL SCALE BAG WEIGHTS	1.	INDUCTION BEND QUANTITIES ALONG WITH THEIR DESCRIPTIONS ARE LOCATED ON DRAWING 21040-SIG-FW-00001.	2.	SEE ARM DRAWING PACKAGE FOR ANODE BED DEEP WELL.								
PIPE COATING DATA				PIPE COATING DATA				PIPE COATING DATA														
PIPE COATING: 14 MIL MINIMUM FBE AND 24 MIL MINIMUM ARO				PIPE COATING: 14 MIL MINIMUM FBE AND 24 MIL MINIMUM ARO				PIPE COATING: 14 MIL MINIMUM FBE AND 24 MIL MINIMUM ARO														
SOUTH WELD COATING: 2 PART EPOXY				SOUTH WELD COATING: 2 PART EPOXY				SOUTH WELD COATING: 2 PART EPOXY														
INTERNAL COATING (YES/NO): NO				INTERNAL COATING (YES/NO): NO				INTERNAL COATING (YES/NO): NO														

LEGEND				REVISIONS				APPROVALS							
1	PIPELINE ROUTE	2	PROPOSED CL	NO.	DESCRIPTION	DATE	REV BY	CHK BY	APP BY	NO.	DESCRIPTION	DATE	REV BY	CHK BY	APP BY
3	FENCE	4	POWER LINE	1	IFC (UPDATE ENV. RE-ROUTES, FOOT-PRINT)	2016-04-08	MB	MJ	RG	1	IFC (UPDATE ENV. RE-ROUTES, FOOT-PRINT)	2016-04-08	MB	MJ	RG
5	TELEPHONE LINE	6	ROAD	2	ISSUED FOR CONSTRUCTION	2015-12-15	MB	MJ	RG	2	ISSUED FOR CONSTRUCTION	2015-12-15	MB	MJ	RG
7	ROADWAY	8	ROADWAY	APPROVAL				APPROVAL							
9	ROADWAY	10	ROADWAY	APPROVAL				APPROVAL							
11	ROADWAY	12	ROADWAY	APPROVAL				APPROVAL							
13	ROADWAY	14	ROADWAY	APPROVAL				APPROVAL							
15	ROADWAY	16	ROADWAY	APPROVAL				APPROVAL							
17	ROADWAY	18	ROADWAY	APPROVAL				APPROVAL							
19	ROADWAY	20	ROADWAY	APPROVAL				APPROVAL							
21	ROADWAY	22	ROADWAY	APPROVAL				APPROVAL							
23	ROADWAY	24	ROADWAY	APPROVAL				APPROVAL							
25	ROADWAY	26	ROADWAY	APPROVAL				APPROVAL							
27	ROADWAY	28	ROADWAY	APPROVAL				APPROVAL							
29	ROADWAY	30	ROADWAY	APPROVAL				APPROVAL							
31	ROADWAY	32	ROADWAY	APPROVAL				APPROVAL							
33	ROADWAY	34	ROADWAY	APPROVAL				APPROVAL							
35	ROADWAY	36	ROADWAY	APPROVAL				APPROVAL							
37	ROADWAY	38	ROADWAY	APPROVAL				APPROVAL							
39	ROADWAY	40	ROADWAY	APPROVAL				APPROVAL							
41	ROADWAY	42	ROADWAY	APPROVAL				APPROVAL							
43	ROADWAY	44	ROADWAY	APPROVAL				APPROVAL							
45	ROADWAY	46	ROADWAY	APPROVAL				APPROVAL							
47	ROADWAY	48	ROADWAY	APPROVAL				APPROVAL							
49	ROADWAY	50	ROADWAY	APPROVAL				APPROVAL							
51	ROADWAY	52	ROADWAY	APPROVAL				APPROVAL							
53	ROADWAY	54	ROADWAY	APPROVAL				APPROVAL							
55	ROADWAY	56	ROADWAY	APPROVAL				APPROVAL							
57	ROADWAY	58	ROADWAY	APPROVAL				APPROVAL							
59	ROADWAY	60	ROADWAY	APPROVAL				APPROVAL							
61	ROADWAY	62	ROADWAY	APPROVAL				APPROVAL							
63	ROADWAY	64	ROADWAY	APPROVAL				APPROVAL							
65	ROADWAY	66	ROADWAY	APPROVAL				APPROVAL							
67	ROADWAY	68	ROADWAY	APPROVAL				APPROVAL							
69	ROADWAY	70	ROADWAY	APPROVAL				APPROVAL							
71	ROADWAY	72	ROADWAY	APPROVAL				APPROVAL							
73	ROADWAY	74	ROADWAY	APPROVAL				APPROVAL							
75	ROADWAY	76	ROADWAY	APPROVAL				APPROVAL							
77	ROADWAY	78	ROADWAY	APPROVAL				APPROVAL							
79	ROADWAY	80	ROADWAY	APPROVAL				APPROVAL							
81	ROADWAY	82	ROADWAY	APPROVAL				APPROVAL							
83	ROADWAY	84	ROADWAY	APPROVAL				APPROVAL							
85	ROADWAY	86	ROADWAY	APPROVAL				APPROVAL							
87	ROADWAY	88	ROADWAY	APPROVAL				APPROVAL							
89	ROADWAY	90	ROADWAY	APPROVAL				APPROVAL							
91	ROADWAY	92	ROADWAY	APPROVAL				APPROVAL							
93	ROADWAY	94	ROADWAY	APPROVAL				APPROVAL							
95	ROADWAY	96	ROADWAY	APPROVAL				APPROVAL							
97	ROADWAY	98	ROADWAY	APPROVAL				APPROVAL							
99	ROADWAY	100	ROADWAY	APPROVAL				APPROVAL							





**DISCLAIMER: UNIVERSALPEGASUS INTERNATIONAL MAKES NO WARRANTY (EXPRESSED, IMPLIED OR OTHERWISE) THAT THE INFORMATION CONTAINED HEREIN IS ACCURATE OR COMPLETE AS TO ANY AND ALL SUBSURFACE CONDITIONS AND CONFIRMATION. ANY RELIANCE CONTRACTOR PLACES ON THE INFORMATION CONTAINED HEREIN AS TO SUCH CONDITIONS, IS DONE SO AT ITS OWN RISK AND EXPENSE. IT IS THE SOLE RESPONSIBILITY OF THE CONTRACTOR TO CONTACT THE STATE "ONE CALL" SYSTEM PRIOR TO ANY EXCAVATION.**

SURVEY DATA		STATIONING		MATERIAL	
MATCHLINE 5350+00	3075 MLC ASSET HOLDINGS LLC 1903 FT 5350+00 TO 5366+00	MATCHLINE 5360+00	3077 MLC ASSET HOLDINGS LLC 2027 FT 5366+00 TO 5384+27	MATCHLINE 5390+00	4031 MLC ASSET HOLDINGS LLC 574 FT 5384+27 TO 5400+00
SCALE: 1" = 200'					
ENVIRONMENTAL DATA	STATIONS	ENVIRONMENTAL DATA	STATIONS	ENVIRONMENTAL DATA	STATIONS
MINIMUM DEPTH OF COVER	CLASSIFICATION	MINIMUM DEPTH OF COVER	CLASSIFICATION	MINIMUM DEPTH OF COVER	CLASSIFICATION
INTERFERING UTILITY CROSSINGS		INTERFERING UTILITY CROSSINGS		INTERFERING UTILITY CROSSINGS	
PERMANENT EROSION CONTROL	EROSION CONTROL CODE	PERMANENT EROSION CONTROL	EROSION CONTROL CODE	PERMANENT EROSION CONTROL	EROSION CONTROL CODE
THREATENED AND ENDANGERED SPECIES		THREATENED AND ENDANGERED SPECIES		THREATENED AND ENDANGERED SPECIES	
SPECIAL CONDITIONS		SPECIAL CONDITIONS		SPECIAL CONDITIONS	

BILL OF MATERIALS				MISCELLANEOUS MATERIALS				TYPICAL DRAWINGS				GENERAL INFORMATION														
ITEM NO.	QTY	UOM	RECN NUMBER	MATERIAL NUMBER	DESCRIPTION	QTY	UOM	RECN NUMBER	MATERIAL NUMBER	DESCRIPTION	DWG/FIELD BOOK NO.	TITLE	1. THE MINIMUM DEPTH OF COVER FOR THE PROJECT IS 36 INCHES. ADDITIONAL DEPTH OF COVER IS REQUIRED FOR ROAD AND WATERBODY CROSSINGS, AND IS TO BE IN ACCORDANCE WITH REFERENCED PERMIT DRAWINGS, SITE SPECIFIC DRAWINGS, OR CONSTRUCTION SPECIFICATIONS, WHICHEVER IS MORE STRINGENT. 2. THE BOUNDARIES OF ALL WORK AREAS WILL BE CLEARLY MARKED AND ALL WORK SHALL REMAIN WITHIN THE DESIGNATED WORK AREA. 3. THE REQUIRED STATE ONE CALL NOTIFICATION IS THE RESPONSIBILITY OF THE CONSTRUCTION CONTRACTOR. 4. THE CONTRACTOR SHALL ACCESS THE WORK AREA USING ONLY PUBLIC ROADS AND APPROVED ACCESS ROADS. 5. ADDITIONAL WARNING SIGNS MAY BE REQUIRED AS DICTATED BY CONSTRUCTION CONTRACT. 6. MAP PROJECTION: NAD 1983 HARN STATE PLANE FLORIDA EAST ZONE 1801 FEET, VERTICAL DATUM: NAVD 83.													
1	2229	FT		30" O.D. x 0.429 W.T., API 5L X70, FIBL D5AW, 14-16 MILS FBE	30" O.D. x 0.429 W.T., API 5L X70, FIBL D5AW, 14-16 MILS FBE	21040-510-TYP-20001	SET ON WEIGHTS	21040-510-TYP-20002	CATHODIC PROTECTION STD. SINGLE POINT TEST SECTION, TYPE 1	21040-510-TYP-20002	21040-510-TYP-20002	CATHODIC PROTECTION STD. FOREIGN PIPELINE CROSSING TEST STATION, TYPE 2	21040-510-TYP-20011	CONTINUOUS CONCRETE COATING STANDARD FOR 36" O.D. PIPELINE	21040-510-TYP-20011	TYPICAL SAGOLE BAG WEIGHTS	21040-510-TYP-20011	WARNING SIGN DETAIL	21040-510-TYP-20011	AERIAL MARKER INSTALLATION DETAIL	21040-510-TYP-20011	TYPICAL PIPELINE MARKER ASSEMBLY	21040-510-TYP-20011	TYPICAL PIPELINE MARKER ASSEMBLY	21040-510-TYP-20011	TYPICAL PIPELINE MARKER ASSEMBLY

FITTINGS SUMMARY				CONCRETE COATING				PIPE COATING DATA							
ITEM NO.	QTY	UOM	RECN NUMBER	MATERIAL NUMBER	DESCRIPTION	QTY	UOM	RECN NUMBER	MATERIAL NUMBER	DESCRIPTION	QTY	UOM	RECN NUMBER	MATERIAL NUMBER	DESCRIPTION
1	2229	FT			6" OF CONCRETE COATING (140 PCF DENSITY CONCRETE)	2229	FT			6" OF CONCRETE COATING (140 PCF DENSITY CONCRETE)					PIPE COATING: 14 MIL MINIMUM FBE AND 24 MIL MINIMUM ARO SINTH WELD COATING: 2 PART EPOXY INTERNAL COATING (YES/NO): NO

REVISIONS				APPROVALS	
NO.	DESCRIPTION	DATE	REV. BY	APP. BY	MB
G	ISSUED FOR 90% REVIEW	2015-08-14	MB	MJ	RG
F	ISSUED FOR FINAL REVIEW	2014-09-05	MB	RG	LD
E	ISSUED FOR PERC FILING	2014-08-15	MB	RG	LD
D	ISSUED FOR 60% REVIEW	2014-06-16	MB	RG	LD

**FLORIDA SOUTHEAST CONNECTION PROJECT**  
 STA. 5350+00 TO 5400+00  
**FLORIDA SOUTHEAST CONNECTION ALIGNMENT SHEET**  
 OKEECHOBEE AND ST. LUCIE COUNTIES, FLORIDA  
 SCALE: 1" = 200'      21040-510-ALS-00113      REV. G