

DISCLAIMER: UNIVERSALPEGASUS INTERNATIONAL MAKES NO WARRANTY (EXPRESSED, IMPLIED OR OTHERWISE) THAT THE INFORMATION CONTAINED HEREIN IS ACCURATE OR COMPLETE AS TO ANY AND ALL SUBSURFACE CONDITIONS AND CONFORMATION. ANY RELIANCE CONTRACTOR PLACES ON THE INFORMATION CONTAINED HEREIN AS TO SUCH CONDITIONS, IS DONE SO AT ITS OWN RISK AND EXPENSE. IT IS THE SOLE RESPONSIBILITY OF THE CONTRACTOR TO CONTACT THE STATE "ONE CALL" SYSTEM PRIOR TO ANY EXCAVATION.

SURVEY DATA	STATIONING
MATCHLINE 6450+00	6453+08 TOP OF BANK 6453+03 CLD/DITCH 6454+00 TOP OF BANK 6454+18 FENCE 6454+11 PRIVATE RD 6454+28 PRIVATE RD 6454+37 TOP OF BANK 6454+42 CLD/DITCH 6454+50 TOP OF BANK
MATCHLINE 6500+00	6480+50 TOP OF BANK 6480+78 TOP OF BANK 6480+85 CLAR 1313 6480+85 PRIVATE RD 6481+11 TOP OF BANK 6481+20 CLD/DITCH 6481+28 TOP OF BANK

ENGINEERING DATA	MATERIAL
MATCHLINE 6450+00	23-7K# SBW @ 11.5 CC 7-7K# SBW @ 11.5 CC 18-7K# SBW @ 11.5 CC 16-7K# SBW @ 11.5 CC 39-7K# SBW @ 11.5 CC 228-7K# SBW @ 11.5 CC
MATCHLINE 6500+00	

ENVIRONMENTAL DATA	STATIONS
TOPSOIL SALVAGE	
WATERBODY/WETLAND CROSSINGS	W-626, W-627, W-629, W-629, W-629, W-629, W-631, W-633, W-631, W-633, W-631, W-633, W-631, W-634, W-631, W-633, W-636, W-635
WATERBODY/WETLAND LENGTH	221', 7', 138', 122', 383', 669', 662', 121', 147', 39', 73', 25', 428', 34', 78', 99', 45', 140'
PERMANENT EROSION CONTROL	6452+21, 6453+87, 6453+94, 6456+79, 6458+17, 6459+74, 6460+32, 6461+46, 6465+92, 6470+29, 6470+32, 6473+78, 6480+73, 6481+09, 6487+71, 6487+71, 6488+92, 6488+92, 6490+39, 6490+39, 6490+78, 6490+78, 6491+51, 6491+51, 6491+76, 6491+76, 6498+04, 6498+04, 6498+38, 6498+38, 6497+16, 6497+16, 6498+15, 6498+15, 6498+60, 6498+60, 6498+60
THREATENED AND ENDANGERED SPECIES	
SPECIAL CONDITIONS	

BILL OF MATERIALS	MISCELLANEOUS MATERIALS	REFERENCE DRAWINGS	GENERAL INFORMATION	LEGEND	REVISIONS	APPROVALS																																																																																																											
<table border="1"> <tr><th>ITEM NO.</th><th>QTY</th><th>UOM</th><th>REQD NUMBER</th><th>MATERIAL NUMBER</th><th>DESCRIPTION</th></tr> <tr><td>Z</td><td>5000</td><td>FT</td><td></td><td></td><td>30" O.D. x 0.429" W.T., API 5L, X70, PSL2, DSAW, 14-16 MILS FBE</td></tr> </table>	ITEM NO.	QTY	UOM	REQD NUMBER	MATERIAL NUMBER	DESCRIPTION	Z	5000	FT			30" O.D. x 0.429" W.T., API 5L, X70, PSL2, DSAW, 14-16 MILS FBE	<table border="1"> <tr><th>QTY</th><th>UOM</th><th>REQD NUMBER</th><th>MATERIAL NUMBER</th><th>DESCRIPTION</th></tr> <tr><td>331</td><td>EA</td><td></td><td></td><td>SET ON WEIGHTS</td></tr> <tr><td>4</td><td>EA</td><td></td><td></td><td>PIPELINE MARKERS</td></tr> <tr><td>1</td><td>EA</td><td></td><td></td><td>WARNING SIGNS</td></tr> <tr><td>1</td><td>EA</td><td></td><td></td><td>CP TEST STATION TYPE 1</td></tr> <tr><td>0</td><td>EA</td><td></td><td></td><td>CP TEST STATION TYPE 2</td></tr> <tr><td>0</td><td>EA</td><td></td><td></td><td>AERIAL MARKERS</td></tr> </table>	QTY	UOM	REQD NUMBER	MATERIAL NUMBER	DESCRIPTION	331	EA			SET ON WEIGHTS	4	EA			PIPELINE MARKERS	1	EA			WARNING SIGNS	1	EA			CP TEST STATION TYPE 1	0	EA			CP TEST STATION TYPE 2	0	EA			AERIAL MARKERS	DWG/FIELD BOOK NO. TITLE	1. THE MINIMUM DEPTH OF COVER FOR THE PROJECT IS 30 INCHES FOR CLASS 1 LOCATIONS. ADDITIONAL DEPTH OF COVER IS REQUIRED FOR CLASS 2 AND CLASS 3, AS WELL AS ROAD AND WATERBODY CROSSINGS, AND IS TO BE IN ACCORDANCE WITH REFERENCED PERMIT DRAWINGS, SITE SPECIFIC DRAWINGS, OR CONSTRUCTION SPECIFICATIONS, WHICHEVER IS MORE STRINGENT. 2. THE BOUNDARIES OF ALL WORK AREAS WILL BE CLEARLY MARKED AND ALL WORK SHALL REMAIN WITHIN THE DESIGNATED WORK AREA. 3. THE REQUIRED STATE ONE CALL NOTIFICATION IS THE RESPONSIBILITY OF THE CONSTRUCTION CONTRACTOR. 4. THE CONTRACTOR SHALL ACCESS THE WORK AREA USING ONLY PUBLIC ROADS AND APPROVED ACCESS ROADS. 5. ADDITIONAL WARNING SIGNS MAY BE REQUIRED AS DICTATED BY CONSTRUCTION CONTRACT.	HEAVY WALL PIPE SD RAD PIT TRANSITION PIPE CASING PIPE CONCRETE COATING BURIED CABLE UTILITY LINE GENERAL SURVEY FOREIGN PIPELINE RAILROAD HIGHWAY / ROAD PRIVATE ACCESS / SHOOPY ROAD ROW PARCEL PLS SECTION LINE PIPELINE MARKER PIPELINE MILEPOST WARNING SIGN MATERIAL ITEM AERIAL MARKER CP TEST STATION BY MOV / BV & CV TRAP WATER WELL HDD ENTRY / EXIT BORE ENTRY / EXIT	<table border="1"> <tr><th>NO.</th><th>DESCRIPTION</th><th>DATE</th><th>REV BY</th><th>CHK BY</th><th>APP BY</th></tr> <tr><td>B</td><td>ISSUED FOR PRE-FERC FILING</td><td>2013-11-16</td><td>MB</td><td>RG</td><td>LD</td></tr> <tr><td>C</td><td>ISSUED FOR ERP</td><td>2014-03-07</td><td>MB</td><td>RG</td><td>LD</td></tr> <tr><td>D</td><td>ISSUED FOR 60% REVIEW</td><td>2014-06-16</td><td>MB</td><td>RG</td><td>LD</td></tr> <tr><td>E</td><td>ISSUED FOR FERC FILING</td><td>2014-08-15</td><td>MB</td><td>RG</td><td>LD</td></tr> </table>	NO.	DESCRIPTION	DATE	REV BY	CHK BY	APP BY	B	ISSUED FOR PRE-FERC FILING	2013-11-16	MB	RG	LD	C	ISSUED FOR ERP	2014-03-07	MB	RG	LD	D	ISSUED FOR 60% REVIEW	2014-06-16	MB	RG	LD	E	ISSUED FOR FERC FILING	2014-08-15	MB	RG	LD	<table border="1"> <tr><th>NO.</th><th>DESCRIPTION</th><th>DATE</th><th>REV BY</th><th>CHK BY</th><th>APP BY</th></tr> <tr><td>B</td><td>ISSUED FOR PRE-FERC FILING</td><td>2013-11-16</td><td>MB</td><td>RG</td><td>LD</td></tr> <tr><td>C</td><td>ISSUED FOR ERP</td><td>2014-03-07</td><td>MB</td><td>RG</td><td>LD</td></tr> <tr><td>D</td><td>ISSUED FOR 60% REVIEW</td><td>2014-06-16</td><td>MB</td><td>RG</td><td>LD</td></tr> <tr><td>E</td><td>ISSUED FOR FERC FILING</td><td>2014-08-15</td><td>MB</td><td>RG</td><td>LD</td></tr> </table>	NO.	DESCRIPTION	DATE	REV BY	CHK BY	APP BY	B	ISSUED FOR PRE-FERC FILING	2013-11-16	MB	RG	LD	C	ISSUED FOR ERP	2014-03-07	MB	RG	LD	D	ISSUED FOR 60% REVIEW	2014-06-16	MB	RG	LD	E	ISSUED FOR FERC FILING	2014-08-15	MB	RG	LD
ITEM NO.	QTY	UOM	REQD NUMBER	MATERIAL NUMBER	DESCRIPTION																																																																																																												
Z	5000	FT			30" O.D. x 0.429" W.T., API 5L, X70, PSL2, DSAW, 14-16 MILS FBE																																																																																																												
QTY	UOM	REQD NUMBER	MATERIAL NUMBER	DESCRIPTION																																																																																																													
331	EA			SET ON WEIGHTS																																																																																																													
4	EA			PIPELINE MARKERS																																																																																																													
1	EA			WARNING SIGNS																																																																																																													
1	EA			CP TEST STATION TYPE 1																																																																																																													
0	EA			CP TEST STATION TYPE 2																																																																																																													
0	EA			AERIAL MARKERS																																																																																																													
NO.	DESCRIPTION	DATE	REV BY	CHK BY	APP BY																																																																																																												
B	ISSUED FOR PRE-FERC FILING	2013-11-16	MB	RG	LD																																																																																																												
C	ISSUED FOR ERP	2014-03-07	MB	RG	LD																																																																																																												
D	ISSUED FOR 60% REVIEW	2014-06-16	MB	RG	LD																																																																																																												
E	ISSUED FOR FERC FILING	2014-08-15	MB	RG	LD																																																																																																												
NO.	DESCRIPTION	DATE	REV BY	CHK BY	APP BY																																																																																																												
B	ISSUED FOR PRE-FERC FILING	2013-11-16	MB	RG	LD																																																																																																												
C	ISSUED FOR ERP	2014-03-07	MB	RG	LD																																																																																																												
D	ISSUED FOR 60% REVIEW	2014-06-16	MB	RG	LD																																																																																																												
E	ISSUED FOR FERC FILING	2014-08-15	MB	RG	LD																																																																																																												

FITTINGS SUMMARY		PIPE COATING DATA		SPECIAL NOTES	
ITEM NO.	QTY	UOM	REQD NUMBER	MATERIAL NUMBER	DESCRIPTION
PIPE ASSEMBLIES		PIPE COATING: 14 MIL MINIMUM FBE AND 24 MIL MINIMUM ARO			
		GIRTH WELD COATING: 2 PART EPOXY			
		INTERNAL COATING (YES/NO): NO			

FLORIDA SOUTHEAST CONNECTION PROJECT

STA: 6450+00 TO 6500+00

FLORIDA SOUTHEAST CONNECTION ALIGNMENT SHEET

MARTIN COUNTY, FLORIDA

SCALE: 1" = 200'

21040-510-ALS-00136

REV. E

APPROVALS

UNIVERSALPEGASUS INTERNATIONAL

FLORIDA SOUTHEAST CONNECTION

1 INCH = 200 FT

0 100 200 400 600 800

CONSTRUCTION PERMIT NO.

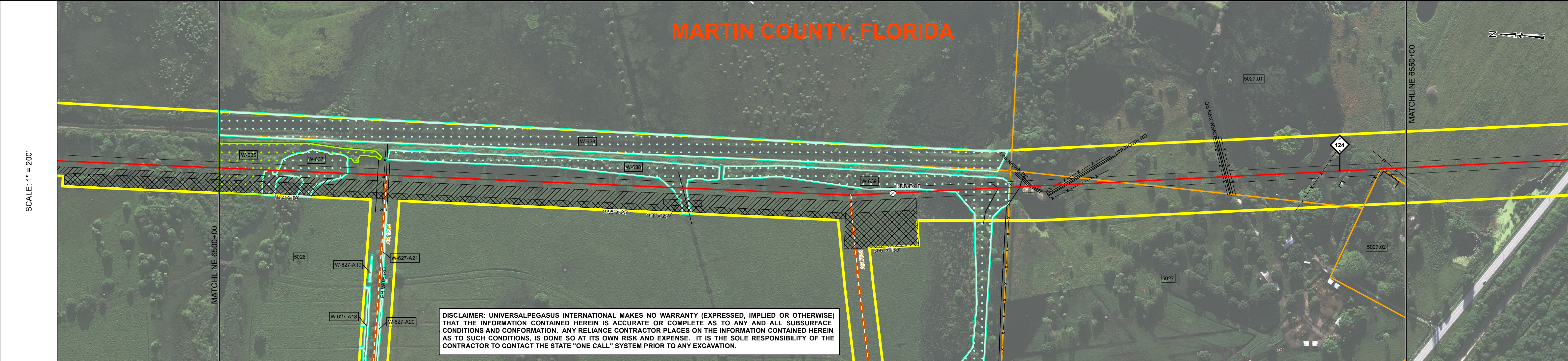
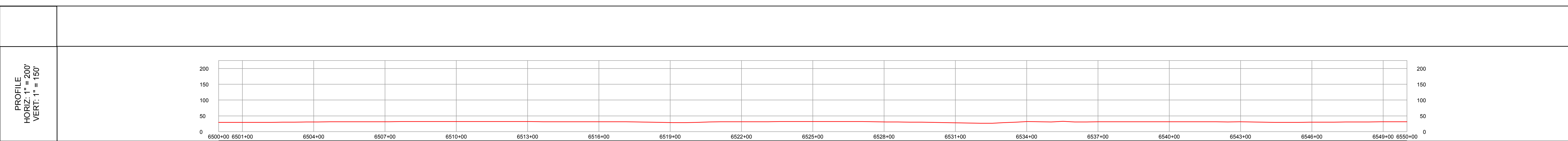
MAINTENANCE OPERATION REGION

MIN. TEST PRESSURE 1816 PSI

DESIGN PRESSURE 1440 PSI

DISCIPLINE: 03

SHEET 136



SURVEY DATA		STATIONING
MATCHLINE 6500+00	6500+00	6500+00
6500+64	6500+64	6500+64
6507+20	6507+20	6507+20
6510+84	6510+84	6510+84
6518+70	6518+70	6518+70
6519+87	6519+87	6519+87
6520+84	6520+84	6520+84
6527+57	6527+57	6527+57
6528+37	6528+37	6528+37
6530+00	6530+00	6530+00
6535+26	6535+26	6535+26
6545+25	6545+25	6545+25
MATCHLINE 6550+00	6550+00	6550+00

ENGINEERING DATA		MATERIAL
MATCHLINE 6500+00	6500+00	50-7K# SBW @ 11.5 CC
6500+64	6500+64	
6507+20	6507+20	
6510+84	6510+84	
6518+70	6518+70	12-7K# SBW @ 11.5 CC
6519+87	6519+87	
6520+84	6520+84	
6527+57	6527+57	
6528+37	6528+37	
6530+00	6530+00	
6535+26	6535+26	
6545+25	6545+25	
MATCHLINE 6550+00	6550+00	

REFERENCE DRAWING		CLASS	LOCATION
		THIS BAND NOT UTILIZED	
		Class 1	
		THIS BAND NOT UTILIZED	
		THIS BAND NOT UTILIZED	

ENVIRONMENTAL DATA		STATIONS
MATCHLINE 6500+00	6500+00	
6500+64	6500+64	
6507+20	6507+20	
6510+84	6510+84	
6518+70	6518+70	
6519+87	6519+87	
6520+84	6520+84	
6527+57	6527+57	
6528+37	6528+37	
6530+00	6530+00	
6535+26	6535+26	
6545+25	6545+25	
MATCHLINE 6550+00	6550+00	

BILL OF MATERIALS				MISCELLANEOUS MATERIALS			
ITEM NO.	QTY	UOM	DESCRIPTION	QTY	UOM	DESCRIPTION	
10	2163	FT	30" O.D. x 0.617" W.T., API 5L, X70, PSL2, DSAW, 14-16 MILS FBE & 24-30 MILS ARO	62	EA	SET ON WEIGHTS	
11	80	FT	30" O.D. x 0.514" W.T., API 5L, X70, PSL2, DSAW, 14-16 MILS FBE	5	EA	PIPELINE MARKERS	
Z	2757	FT	30" O.D. x 0.429" W.T., API 5L, X70, PSL2, DSAW, 14-16 MILS FBE	1	EA	WARNING SIGNS	
				1	EA	CP TEST STATION TYPE 1	
				0	EA	CP TEST STATION TYPE 2	
				0	EA	AERIAL MARKERS	

FITTINGS SUMMARY			
ITEM NO.	QTY	UOM	DESCRIPTION

PIPE COATING DATA			
QTY	UOM	DESCRIPTION	

REFERENCE DRAWINGS	
DWG/FIELD BOOK NO.	TITLE

GENERAL INFORMATION

- THE MINIMUM DEPTH OF COVER FOR THE PROJECT IS 30 INCHES FOR CLASS 1 LOCATIONS. ADDITIONAL DEPTH OF COVER IS REQUIRED FOR CLASS 2 AND CLASS 3, AS WELL AS ROAD AND WATERBODY CROSSINGS. AND IS TO BE IN ACCORDANCE WITH REFERENCED PERMIT DRAWINGS, SITE SPECIFIC DRAWINGS, OR CONSTRUCTION SPECIFICATIONS, WHICHEVER IS MORE STRINGENT.
- THE BOUNDARIES OF ALL WORK AREAS WILL BE CLEARLY MARKED AND ALL WORK SHALL REMAIN WITHIN THE DESIGNATED WORK AREA.
- THE REQUIRED STATE ONE CALL NOTIFICATION IS THE RESPONSIBILITY OF THE CONSTRUCTION CONTRACTOR.
- THE CONTRACTOR SHALL ACCESS THE WORK AREA USING ONLY PUBLIC ROADS AND APPROVED ACCESS ROADS.
- ADDITIONAL WARNING SIGNS MAY BE REQUIRED AS DICTATED BY CONSTRUCTION CONTRACT.

SPECIAL NOTES

LEGEND	
HEAVY WALL PIPE	PIPELINE ROUTE
SD RAD PIT	X FENCE
TRANSITION PIPE	P POWER LINE
CASING PIPE	T TELEPHONE LINE
CONCRETE COATING	W WATERLINE
SET-ON WEIGHTS	S SEWER LINE
WARNING SIGN	B BURIED CABLE
MATERIAL ITEM	C UTILITY LINE
AERIAL MARKER	U GENERAL SURVEY
CP TEST STATION	4-4 FOREIGN PIPELINE
BY MOV / BV & CV	R RAILROAD
PIPELINE MARKER	H HIGHWAY / ROAD
PIPELINE MILEPOST	SHOOLY ROAD
	PRIVATE ACCESS / SHOOLY ROAD
	COUNTY BOUNDARY
	ROW PARCEL
	PLSS SECTION LINE
	TRAP
	WATER WELL
	HDD ENTRY / EXIT
	BORE ENTRY / EXIT
	PERMANENT ROW
	TEMPORARY WORKSPACE
	ADDITIONAL TEMPORARY WORKSPACE
	NON FORESTED WETLAND
	FORESTED WETLAND
	WATERBODY
	ROCKERY
	ROCKERY BUFFER (100 FEET)
	TYPICAL WORKSPACE CONFIGURATION
	POINT OF INTERSECTION (PI)
	VERTICAL FITTING
	SPREAD BREAK

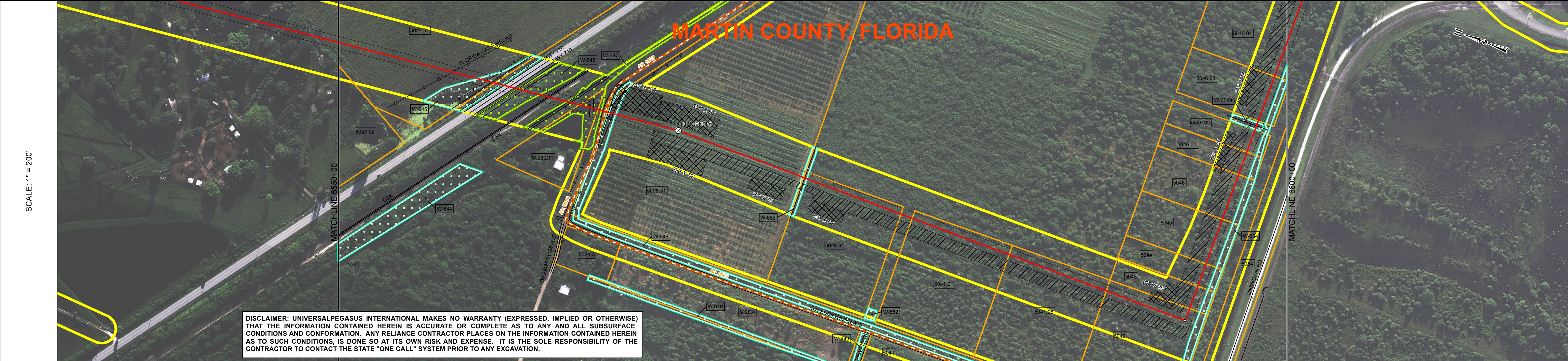
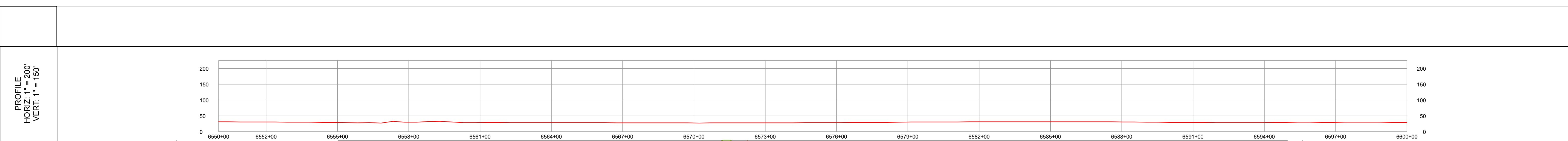
REVISIONS			
NO.	DESCRIPTION	DATE	REV BY
B	ISSUED FOR PRE-FERC FILING	2013-11-16	MB RG LD
C	ISSUED FOR ERP	2014-03-07	MB RG LD
D	ISSUED FOR 60% REVIEW	2014-06-16	MB RG LD
E	ISSUED FOR FERC FILING	2014-08-15	MB RG LD

APPROVALS			
NO.	DESCRIPTION	DATE	REV BY

DRAWN BY:		MB		CONSTRUCTION PERMIT NO.	
CHECKED BY:	RG / MJ				
PROJECT MANAGER:	LD			MIN. TEST PRESSURE	1816 PSI
PROJECT DEF. NO.				DESIGN PRESSURE	1440 PSI

APPROVAL		COMPANY	
ENVIRONMENTAL			
LAND			

FLORIDA SOUTHEAST CONNECTION PROJECT		
STA: 6500+00 TO 6550+00		DISCIPLINE: 03
FLORIDA SOUTHEAST CONNECTION ALIGNMENT SHEET		
MARTIN COUNTY, FLORIDA		
SCALE: 1" = 200'	21040-510-ALS-00137	REV. E



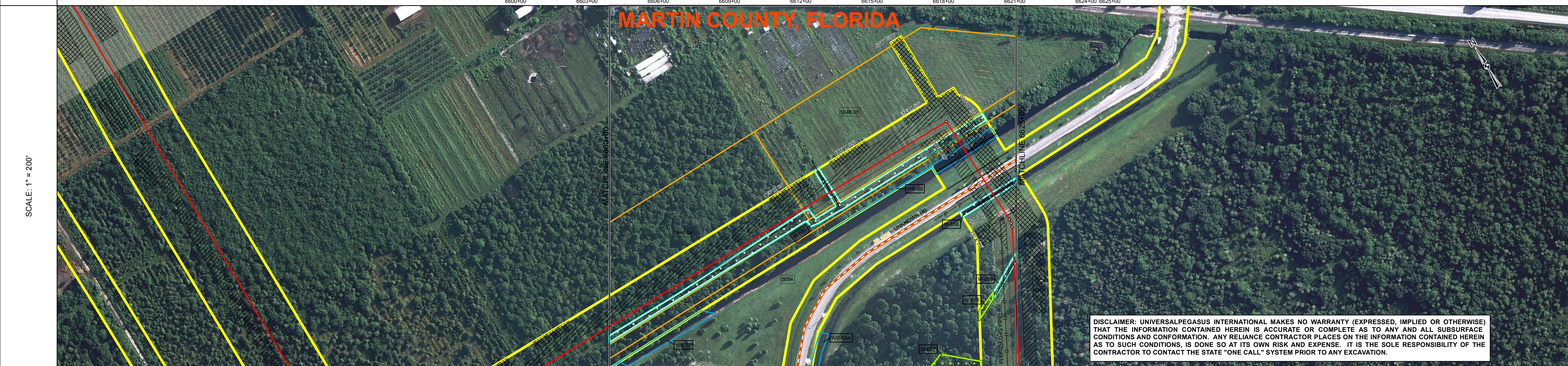
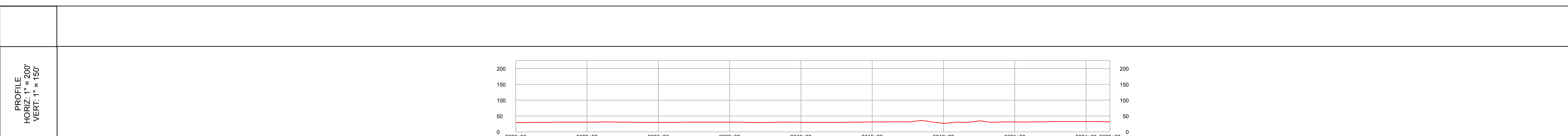
DISCLAIMER: UNIVERSALPEGASUS INTERNATIONAL MAKES NO WARRANTY (EXPRESSED, IMPLIED OR OTHERWISE) THAT THE INFORMATION CONTAINED HEREIN IS ACCURATE OR COMPLETE AS TO ANY AND ALL SUBSURFACE CONDITIONS AND CONFORMATION. ANY RELIANCE CONTRACTOR PLACES ON THE INFORMATION CONTAINED HEREIN AS TO SUCH CONDITIONS, IS DONE SO AT ITS OWN RISK AND EXPENSE. IT IS THE SOLE RESPONSIBILITY OF THE CONTRACTOR TO CONTACT THE STATE "ONE CALL" SYSTEM PRIOR TO ANY EXCAVATION.

SURVEY DATA		STATIONING
		MATCHLINE 6550+00
		6555+00 FOREIGN PL FLORIDA GAS PIPELINE 6556+44 FENCE 6556+66 CL DITCH 6557+02 TOP OF BANK 6557+20 ROAD CENTERLINE 6557+42 HWY 710 6557+63 ROAD EDGE 6558+02 CL DITCH 6558+11 TOP OF BANK 6558+45 TOE OF SLOPE 6559+00 TOE OF SLOPE 6559+09 CL CSX TRANSPORTATION 6559+15 CL ROAD TRANSPORTATION 6559+24 TOE OF SLOPE 6559+37 TOP OF BANK 6560+08 CL DITCH 6560+35 TOP OF BANK 6560+92 FENCE 6561+07 CL DITCH 6561+48 ROAD EDGE 6561+59 SW MARTYLUSS 6561+59 CL AR 1333 6561+73 ROAD EDGE 6561+81 POWER LINE 6561+83 CL DITCH 6562+08 TOP OF BANK 6564+82 6565+57 6564+77 6564+79 6564+82 6565+57 6570+03 6570+84 6574+79 6587+55 6595+85 6596+86 6596+94
		MATCHLINE 6600+00

ENGINEERING DATA		MATERIAL
		MATCHLINE 6550+00
		1477' 10' 80' 11' 3443'
		MATCHLINE 6600+00

ENVIRONMENTAL DATA		STATIONS
		MATCHLINE 6550+00
		6556+07 6557+07 6557+79 6558+74 6559+92 6561+42 6561+74 6562+04 6570+33 6570+54 6595+12 6596+39
		MATCHLINE 6600+00

BILL OF MATERIALS				MISCELLANEOUS MATERIALS				REFERENCE DRAWINGS		GENERAL INFORMATION		LEGEND		REVISIONS		APPROVALS		
ITEM NO.	QTY	UOM	DESCRIPTION	QTY	UOM	DESCRIPTION	DWG/FIELD BOOK NO.	TITLE	1. THE MINIMUM DEPTH OF COVER FOR THE PROJECT IS 30 INCHES FOR CLASS 1 LOCATIONS. ADDITIONAL DEPTH OF COVER IS REQUIRED FOR CLASS 2 AND CLASS 3, AS WELL AS ROAD AND WATERBODY CROSSINGS, AND IS TO BE IN ACCORDANCE WITH REFERENCED PERMIT DRAWINGS, SITE SPECIFIC DRAWINGS, OR CONSTRUCTION SPECIFICATIONS, WHICHEVER IS MORE STRINGENT. 2. THE BOUNDARIES OF ALL WORK AREAS WILL BE CLEARLY MARKED AND ALL WORK SHALL REMAIN WITHIN THE DESIGNATED WORK AREA. 3. THE REQUIRED STATE ONE CALL NOTIFICATION IS THE RESPONSIBILITY OF THE CONSTRUCTION CONTRACTOR. 4. THE CONTRACTOR SHALL ACCESS THE WORK AREA USING ONLY PUBLIC ROADS AND APPROVED ACCESS ROADS. 5. ADDITIONAL WARNING SIGNS MAY BE REQUIRED AS DICTATED BY CONSTRUCTION CONTRACT.		HEAVY WALL PIPE SD RAD FIT TRANSITION PIPE CASING PIPE CONCRETE COATING SET ON WEIGHTS WARNING SIGN MATERIAL ITEM AERIAL MARKER CP TEST STATION BY MOV / BV & CV PIPELINE MARKER PIPELINE MILEPOST		PIPELINE ROUTE FENCE POWER LINE TELEPHONE LINE WATERLINE SEWER LINE BURIED CABLE UTILITY LINE GENERAL SURVEY FOREIGN PIPELINE RAILROAD HIGHWAY / ROAD PRIVATE ACCESS / SHOOPY ROAD COUNTY BOUNDARY ROW PARCEL PLSS SECTION LINE TRAP WATER WELL HDD ENTRY / EXT BORE ENTRY / EXT		NO. DESCRIPTION DATE REV BY CHK BY APP BY B ISSUED FOR PRE-FERC FILING 2013-11-16 MB RG LD C ISSUED FOR ERP 2014-03-07 MB RG LD D ISSUED FOR 60% REVIEW 2014-06-16 MB RG LD E ISSUED FOR FERC FILING 2014-08-15 MB RG LD		DRAWN BY: MB CHECKED BY: RG / MJ PROJECT MANAGER LD PROJECT DEF. NO. CONSTRUCTION PERMIT NO. MAINTENANCE OPERATION REGION MIN. TEST PRESSURE 1816 PSI DESIGN PRESSURE 1440 PSI	
10	1477	FT	30" O.D. x 0.617" W.T., API 5L, X70, PSL2, DSAW, 14-16 MILS FBE & 24-30 MILS ARO	16	EA	SET ON WEIGHTS			THIS BAND NOT UTILIZED		PERMANENT ROW TEMPORARY WORKSPACE ADDITIONAL TEMPORARY WORKSPACE NON FORESTED WETLAND FORESTED WETLAND WATERBODY ROCKERY ROCKERY BUFFER (100 FEET) TYPICAL WORKSPACE CONFIGURATION POINT OF INTERSECTION (PI) VERTICAL FITTING SPREAD BREAK		APPROVAL COMPANY		UNIVERSAL PEGASUS INTERNATIONAL FLORIDA SOUTHEAST CONNECTION			
11	80	FT	30" O.D. x 0.514" W.T., API 5L, X70, PSL2, DSAW, 14-16 MILS FBE	6	EA	PIPELINE MARKERS			THIS BAND NOT UTILIZED		ENVIRONMENTAL LAND		FLORIDA SOUTHEAST CONNECTION PROJECT STA: 6550+00 TO 6600+00 DISCIPLINE: 03		FLORIDA SOUTHEAST CONNECTION ALIGNMENT SHEET MARTIN COUNTY, FLORIDA			
Z	3443	FT	30" O.D. x 0.429" W.T., API 5L, X70, PSL2, DSAW, 14-16 MILS FBE	0	EA	WARNING SIGNS			THIS BAND NOT UTILIZED		SCALE: 1" = 200 FT		SCALE: 1" = 200'		21040-510-ALS-00138			
FITTINGS SUMMARY				CONCRETE COATING				SPECIAL NOTES		APPROVAL		APPROVAL		APPROVAL		APPROVAL		
PIPE ASSEMBLIES				PIPE COATING DATA														
GIRTH WELD COATING: 2 PART EPOXY				PIPE COATING: 14 MIL MINIMUM FBE AND 24 MIL MINIMUM ARO														
INTERNAL COATING (YES/NO): NO																		



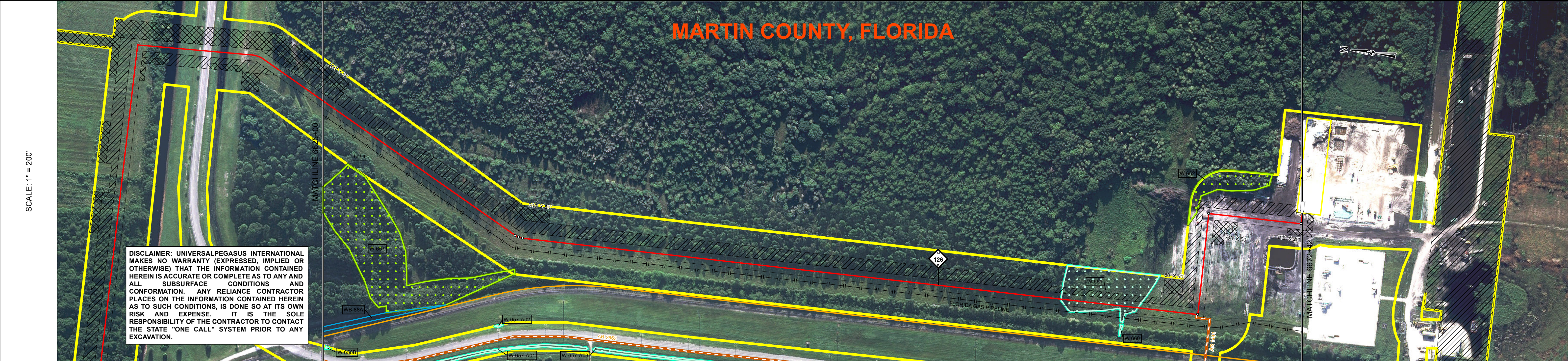
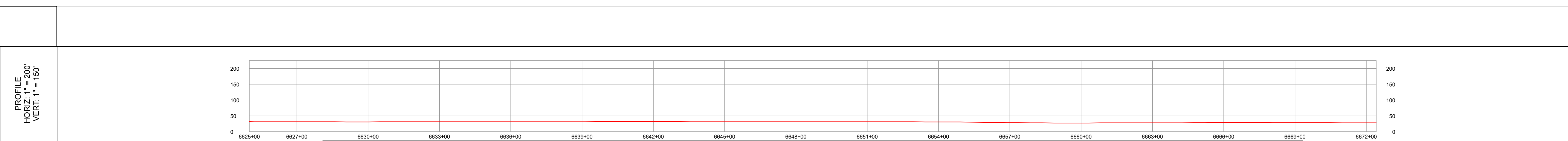
DISCLAIMER: UNIVERSALPEGASUS INTERNATIONAL MAKES NO WARRANTY (EXPRESSED, IMPLIED OR OTHERWISE) THAT THE INFORMATION CONTAINED HEREIN IS ACCURATE OR COMPLETE AS TO ANY AND ALL SUBSURFACE CONDITIONS AND CONFORMATION. ANY RELIANCE CONTRACTOR PLACES ON THE INFORMATION CONTAINED HEREIN AS TO SUCH CONDITIONS, IS DONE SO AT ITS OWN RISK AND EXPENSE. IT IS THE SOLE RESPONSIBILITY OF THE CONTRACTOR TO CONTACT THE STATE "ONE CALL" SYSTEM PRIOR TO ANY EXCAVATION.

SURVEY DATA		STATIONING	
MATCHLINE 6600+00		MATCHLINE 6625+00	

ENGINEERING DATA		MATERIAL	
MATCHLINE 6600+00		MATCHLINE 6625+00	
REFERENCE DRAWING			
CLASS LOCATION			

ENVIRONMENTAL DATA				STATIONS				BILL OF MATERIALS				MISCELLANEOUS MATERIALS				REFERENCE DRAWINGS		GENERAL INFORMATION				LEGEND				REVISIONS				APPROVALS											
TOPSOIL SALVAGE WATERBODY/WETLAND CROSSINGS WATERBODY/WETLAND LENGTH PERMANENT EROSION CONTROL THREATENED AND ENDANGERED SPECIES SPECIAL CONDITIONS				EROSION CONTROL CODE SLOPE BREAKER CODE TIMING CONSTRAINT CONSTRAINT 2 CONSTRAINT 3 CONSTRAINT 4				6610+77 TOP OF BANK 6610+88 CL DITCH 6611+01 TOP OF BANK 6615+58 P.L. 8623532 RT 6616+00 CL DITCH 6617+42 TOP OF BANK 6617+43 TOE OF SLOPE 6617+38 TOP OF BANK 6617+51 TOP OF BANK 6617+52 FENCE 6617+68 TOP OF BANK 6618+86 TOP OF BANK 6619+60 TOP OF BANK 6619+11 TOP OF BANK 6619+12 TOP OF BANK 6619+32 ROAD EDGE 6619+51 CLAR 2683 6619+68 ROAD EDGE 6619+81 TOP OF BANK 6619+83 POWER LINE 6619+83 CL DITCH 6620+37 TOE OF SLOPE 6620+42 CL DITCH 6621+03 TOE OF SLOPE 6621+14 FOREIGN P.L. 6621+30 FENCE 6621+43 P.L. 9253530 RT 6621+56 P.L. 9253530 RT 6622+04 TOP OF BANK 6622+35 CL DITCH 6623+85 TOP OF BANK				1683' 8-7K# SBW @ 10.5 CC 160' 4-7K# SBW @ 10.5 CC 60' 8-7K# SBW @ 11.5 CC 519' 9-7K# SBW @ 11.5 CC		THIS BAND NOT UTILIZED Class 1 THIS BAND NOT UTILIZED THIS BAND NOT UTILIZED W-654 23' 6610+76 6610+99 6617+40 6617+42 6618+24 6620+13 6620+34 6622+09 6622+39 THIS BAND NOT UTILIZED THIS BAND NOT UTILIZED THIS BAND NOT UTILIZED THIS BAND NOT UTILIZED THIS BAND NOT UTILIZED THIS BAND NOT UTILIZED THIS BAND NOT UTILIZED THIS BAND NOT UTILIZED				W-654 W-654 W-88 W-650 W-650				6610+76 6610+99 6617+40 6617+42 6618+24 6620+13 6620+34 6622+09 6622+39				THIS BAND NOT UTILIZED THIS BAND NOT UTILIZED THIS BAND NOT UTILIZED THIS BAND NOT UTILIZED THIS BAND NOT UTILIZED THIS BAND NOT UTILIZED THIS BAND NOT UTILIZED THIS BAND NOT UTILIZED THIS BAND NOT UTILIZED				HEAVY WALL PIPE SD RAD FIT TRANSITION PIPE CASING PIPE CONCRETE COATING SET-ON WEIGHTS WARNING SIGN MATERIAL ITEM AERIAL MARKER CP TEST STATION BY MOV / BV & CV PIPELINE MILEPOST PIPELINE ROUTE X FENCE P POWER LINE T TELEPHONE LINE W WATERLINE S SEWER LINE C BURIED CABLE U UTILITY LINE GENERAL SURVEY FOREIGN PIPELINE RAILROAD HIGHWAY / ROAD PRIVATE ACCESS / SHOOPLY ROAD COUNTY BOUNDARY ROW PARCEL PLS SECTION LINE TRAP WATER WELL HDD ENTRY / EXIT BORE ENTRY / EXIT PERMANENT ROW TEMPORARY WORKSPACE ADDITIONAL TEMPORARY WORKSPACE NON FORESTED WETLAND FORESTED WETLAND WATERBODY WETLAND / WATERBODY NAME ROOKERY / ROOKERY BUFFER (100 FT) TYPICAL WORKSPACE CONFIGURATION POINT OF INTERSECTION (PI) VERTICAL FITTING SPREAD BREAK				NO. DESCRIPTION DATE REV BY CHK BY APP BY B ISSUED FOR PRE-FERC FILING 2013-11-16 MB RG LD C ISSUED FOR ERP 2014-03-07 MB RG LD D ISSUED FOR 60% REVIEW 2014-06-16 MB RG LD E ISSUED FOR FERC FILING 2014-08-15 MB RG LD				DRAWN BY: MB CHECKED BY: RG / MJ PROJECT MANAGER: LD PROJECT DEF. NO. CONSTRUCTION PERMIT NO. MAINTENANCE OPERATION REGION MIN. TEST PRESSURE 1816 PSI DESIGN PRESSURE 1440 PSI			
BILL OF MATERIALS ITEM NO. QTY UOM REQN MATERIAL DESCRIPTION Z 2280 FT 30" O.D. x 0.429" W.T., API 5L, X70, PSL2, DSAW, 14-16 MILS FBE g 220 FT 30" O.D. x 0.514" W.T., API 5L, X70, PSL2, DSAW, 14-16 MILS FBE & 24-30 MILS ARO				MISCELLANEOUS MATERIALS QTY UOM REQN MATERIAL NUMBER DESCRIPTION 28 EA SET ON WEIGHTS 2 EA PIPELINE MARKERS 0 EA WARNING SIGNS 0 EA CP TEST STATION TYPE 1 1 EA CP TEST STATION TYPE 2 0 EA AERIAL MARKERS				DWG/FIELD BOOK NO. TITLE		GENERAL INFORMATION 1. THE MINIMUM DEPTH OF COVER FOR THE PROJECT IS 30 INCHES FOR CLASS 1 LOCATIONS. ADDITIONAL DEPTH OF COVER IS REQUIRED FOR CLASS 2 AND CLASS 3, AS WELL AS ROAD AND WATERBODY CROSSINGS, AND IS TO BE IN ACCORDANCE WITH REFERENCED PERMIT DRAWINGS, SITE SPECIFIC DRAWINGS, OR CONSTRUCTION SPECIFICATIONS, WHICHEVER IS MORE STRINGENT. 2. THE BOUNDARIES OF ALL WORK AREAS WILL BE CLEARLY MARKED AND ALL WORK SHALL REMAIN WITHIN THE DESIGNATED WORK AREA. 3. THE REQUIRED STATE ONE CALL NOTIFICATION IS THE RESPONSIBILITY OF THE CONSTRUCTION CONTRACTOR. 4. THE CONTRACTOR SHALL ACCESS THE WORK AREA USING ONLY PUBLIC ROADS AND APPROVED ACCESS ROADS. 5. ADDITIONAL WARNING SIGNS MAY BE REQUIRED AS DICTATED BY CONSTRUCTION CONTRACT.				LEGEND HEAVY WALL PIPE SD RAD FIT TRANSITION PIPE CASING PIPE CONCRETE COATING SET-ON WEIGHTS WARNING SIGN MATERIAL ITEM AERIAL MARKER CP TEST STATION BY MOV / BV & CV PIPELINE MILEPOST PIPELINE ROUTE X FENCE P POWER LINE T TELEPHONE LINE W WATERLINE S SEWER LINE C BURIED CABLE U UTILITY LINE GENERAL SURVEY FOREIGN PIPELINE RAILROAD HIGHWAY / ROAD PRIVATE ACCESS / SHOOPLY ROAD COUNTY BOUNDARY ROW PARCEL PLS SECTION LINE TRAP WATER WELL HDD ENTRY / EXIT BORE ENTRY / EXIT PERMANENT ROW TEMPORARY WORKSPACE ADDITIONAL TEMPORARY WORKSPACE NON FORESTED WETLAND FORESTED WETLAND WATERBODY WETLAND / WATERBODY NAME ROOKERY / ROOKERY BUFFER (100 FT) TYPICAL WORKSPACE CONFIGURATION POINT OF INTERSECTION (PI) VERTICAL FITTING SPREAD BREAK				REVISIONS NO. DESCRIPTION DATE REV BY CHK BY APP BY B ISSUED FOR PRE-FERC FILING 2013-11-16 MB RG LD C ISSUED FOR ERP 2014-03-07 MB RG LD D ISSUED FOR 60% REVIEW 2014-06-16 MB RG LD E ISSUED FOR FERC FILING 2014-08-15 MB RG LD				APPROVALS DRAWN BY: MB CHECKED BY: RG / MJ PROJECT MANAGER: LD PROJECT DEF. NO. CONSTRUCTION PERMIT NO. MAINTENANCE OPERATION REGION MIN. TEST PRESSURE 1816 PSI DESIGN PRESSURE 1440 PSI																			
FITTINGS SUMMARY ITEM NO. QTY UOM REQN MATERIAL DESCRIPTION PIPE COATING: 14 MIL MINIMUM FBE AND 24 MIL MINIMUM ARO GIRTH WELD COATING: 2 PART EPOXY INTERNAL COATING (YES/NO): NO				PIPE COATING DATA PIPE COATING: 14 MIL MINIMUM FBE AND 24 MIL MINIMUM ARO GIRTH WELD COATING: 2 PART EPOXY INTERNAL COATING (YES/NO): NO				SPECIAL NOTES				APPROVAL				COMPANY																									
PIPE ASSEMBLIES QTY UOM DESCRIPTION				PIPE ASSEMBLIES PIPE COATING: 14 MIL MINIMUM FBE AND 24 MIL MINIMUM ARO GIRTH WELD COATING: 2 PART EPOXY INTERNAL COATING (YES/NO): NO				SPECIAL NOTES				APPROVAL				COMPANY																									

FLORIDA SOUTHEAST CONNECTION PROJECT
 STA: 6600+00 TO 6625+00 DISCIPLINE: 03
 FLORIDA SOUTHEAST CONNECTION
 ALIGNMENT SHEET
 MARTIN COUNTY, FLORIDA
 SCALE: 1" = 200'
 21040-510-ALS-00139 REV. E



SURVEY DATA	STATIONING	MATERIAL	CLASS	LOCATION	CLASS	LOCATION	CLASS	LOCATION
MATCHLINE 6625+00	6634+86 P.L. 9'30" L.L. 6635+03 P.L. 9'30" L.L. 6635+10 P.L. 9'30" L.L.	6635+03	THIS BAND NOT UTILIZED	6635+03	Class 1	THIS BAND NOT UTILIZED	6635+03	THIS BAND NOT UTILIZED
MATCHLINE 6625+00	6646+42	4742'	THIS BAND NOT UTILIZED	6646+42	Class 1	THIS BAND NOT UTILIZED	6646+42	THIS BAND NOT UTILIZED
MATCHLINE 6625+00	6666+42	34.7K' SBW @ 11.5 CC	THIS BAND NOT UTILIZED	6666+42	Class 1	THIS BAND NOT UTILIZED	6666+42	THIS BAND NOT UTILIZED
MATCHLINE 6625+00	6667+72		THIS BAND NOT UTILIZED	6667+72	Class 1	THIS BAND NOT UTILIZED	6667+72	THIS BAND NOT UTILIZED
MATCHLINE 6625+00	6661+62		THIS BAND NOT UTILIZED	6661+62	Class 1	THIS BAND NOT UTILIZED	6661+62	THIS BAND NOT UTILIZED
MATCHLINE 6625+00	6663+78		THIS BAND NOT UTILIZED	6663+78	Class 1	THIS BAND NOT UTILIZED	6663+78	THIS BAND NOT UTILIZED
MATCHLINE 6625+00	6668+05		THIS BAND NOT UTILIZED	6668+05	Class 1	THIS BAND NOT UTILIZED	6668+05	THIS BAND NOT UTILIZED
MATCHLINE 6625+00	6671+96		THIS BAND NOT UTILIZED	6671+96	Class 1	THIS BAND NOT UTILIZED	6671+96	THIS BAND NOT UTILIZED
MATCHLINE 6625+00	6672+42		THIS BAND NOT UTILIZED	6672+42	Class 1	THIS BAND NOT UTILIZED	6672+42	THIS BAND NOT UTILIZED
MATCHLINE 6625+00	6672+42		THIS BAND NOT UTILIZED	6672+42	Class 1	THIS BAND NOT UTILIZED	6672+42	THIS BAND NOT UTILIZED

BILL OF MATERIALS				MISCELLANEOUS MATERIALS				REFERENCE DRAWINGS		GENERAL INFORMATION		LEGEND		REVISIONS			APPROVALS			
ITEM NO.	QTY	UOM	DESCRIPTION	QTY	UOM	DESCRIPTION	DWG/FIELD BOOK NO.	TITLE	1. THE MINIMUM DEPTH OF COVER FOR THE PROJECT IS 30 INCHES FOR CLASS 1 LOCATIONS. ADDITIONAL DEPTH OF COVER IS REQUIRED FOR CLASS 2 AND CLASS 3, AS WELL AS ROAD AND WATERBODY CROSSINGS, AND IS TO BE IN ACCORDANCE WITH REFERENCED PERMIT DRAWINGS, SITE SPECIFIC DRAWINGS, OR CONSTRUCTION SPECIFICATIONS, WHICHEVER IS MORE STRINGENT.		HEAVY WALL PIPE SD RAD FIT TRANSITION PIPE CASING PIPE CONCRETE COATING SET-ON WEIGHTS WARNING SIGN MATERIAL ITEM AERIAL MARKER CP TEST STATION BY MOV / BV & CV PIPELINE MARKER PIPELINE MILEPOST		PIPELINE ROUTE FENCE POWER LINE TELEPHONE LINE WATERLINE SEWER LINE BURIED CABLE UTILITY LINE GENERAL SURVEY FOREIGN PIPELINE RAILROAD HIGHWAY / ROAD PRIVATE ACCESS / SHOOPLY ROAD COUNTY BOUNDARY PLSS SECTION LINE TRAP WATER WELL HDD ENTRY / EXT BORE ENTRY / EXT		NO. DESCRIPTION DATE REV BY CHK BY APP BY			DRAWN BY: MB CHECKED BY: RG / MJ PROJECT DEF. NO.		
Z	4742	FT	30" O.D. x 0.429" W.T., API 5L, X70, PSL2, DSAW, 14-16 MILS FBE	34	EA	SET ON WEIGHTS			2. THE BOUNDARIES OF ALL WORK AREAS WILL BE CLEARLY MARKED AND ALL WORK SHALL REMAIN WITHIN THE DESIGNATED WORK AREA.		PERMANENT ROW TEMPORARY WORKSPACE ADDITIONAL TEMPORARY WORKSPACE NON FORESTED WETLAND FORESTED WETLAND WATERBODY ROCKERY ROCKERY BUFFER (100 FEET) TYPICAL WORKSPACE CONFIGURATION POINT OF INTERSECTION (PI) VERTICAL FITTING SPREAD BREAK		B ISSUED FOR PRE-FERC FILING 2013-11-16 MB RG LD			UNIVERSALPEGASUS INTERNATIONAL				
	6	EA	PIPELINE MARKERS						3. THE REQUIRED STATE ONE CALL NOTIFICATION IS THE RESPONSIBILITY OF THE CONSTRUCTION CONTRACTOR.		WATERBODY		C ISSUED FOR ERP 2014-03-07 MB RG LD			FLORIDA SOUTHEAST CONNECTION				
	0	EA	WARNING SIGNS						4. THE CONTRACTOR SHALL ACCESS THE WORK AREA USING ONLY PUBLIC ROADS AND APPROVED ACCESS ROADS.		WETLAND / WATERBODY NAME		D ISSUED FOR 60% REVIEW 2014-06-16 MB RG LD			FLORIDA SOUTHEAST CONNECTION PROJECT				
	0	EA	CP TEST STATION TYPE 1						5. ADDITIONAL WARNING SIGNS MAY BE REQUIRED AS DICTATED BY CONSTRUCTION CONTRACT.		ROCKERY		E ISSUED FOR FERC FILING 2014-08-15 MB RG LD			STA: 6625+00 TO 6672+42 DISCIPLINE: 03				
	0	EA	CP TEST STATION TYPE 2								WATERBODY		APPROVAL COMPANY			FLORIDA SOUTHEAST CONNECTION ALIGNMENT SHEET				
	0	EA	AERIAL MARKERS								WETLAND / WATERBODY NAME		ENVIRONMENTAL LAND			MARTIN COUNTY, FLORIDA				
FITTINGS SUMMARY				CONCRETE COATING				SPECIAL NOTES				ROCKERY BUFFER (100 FEET)		SCALE: 1" = 200'			21040-510-ALS-00140 REV. E			
ITEM NO.	QTY	UOM	DESCRIPTION	QTY	UOM	DESCRIPTION					TYPICAL WORKSPACE CONFIGURATION		1 INCH = 200 FT			REV. E				
PIPE ASSEMBLIES				PIPE COATING DATA								POINT OF INTERSECTION (PI) VERTICAL FITTING								
DESCRIPTION				PIPE COATING: 14 MIL MINIMUM FBE AND 24 MIL MINIMUM ARO								SPREAD BREAK								
				GIRTH WELD COATING: 2 PART EPOXY																
				INTERNAL COATING (YES/NO): NO																