

Path: Y:\Projects\21040_EPL_Florida_Southeast_Connection\Working\20140422_USGS_Wetland_Waterbody\Map\USGS_Scale1000.mxd

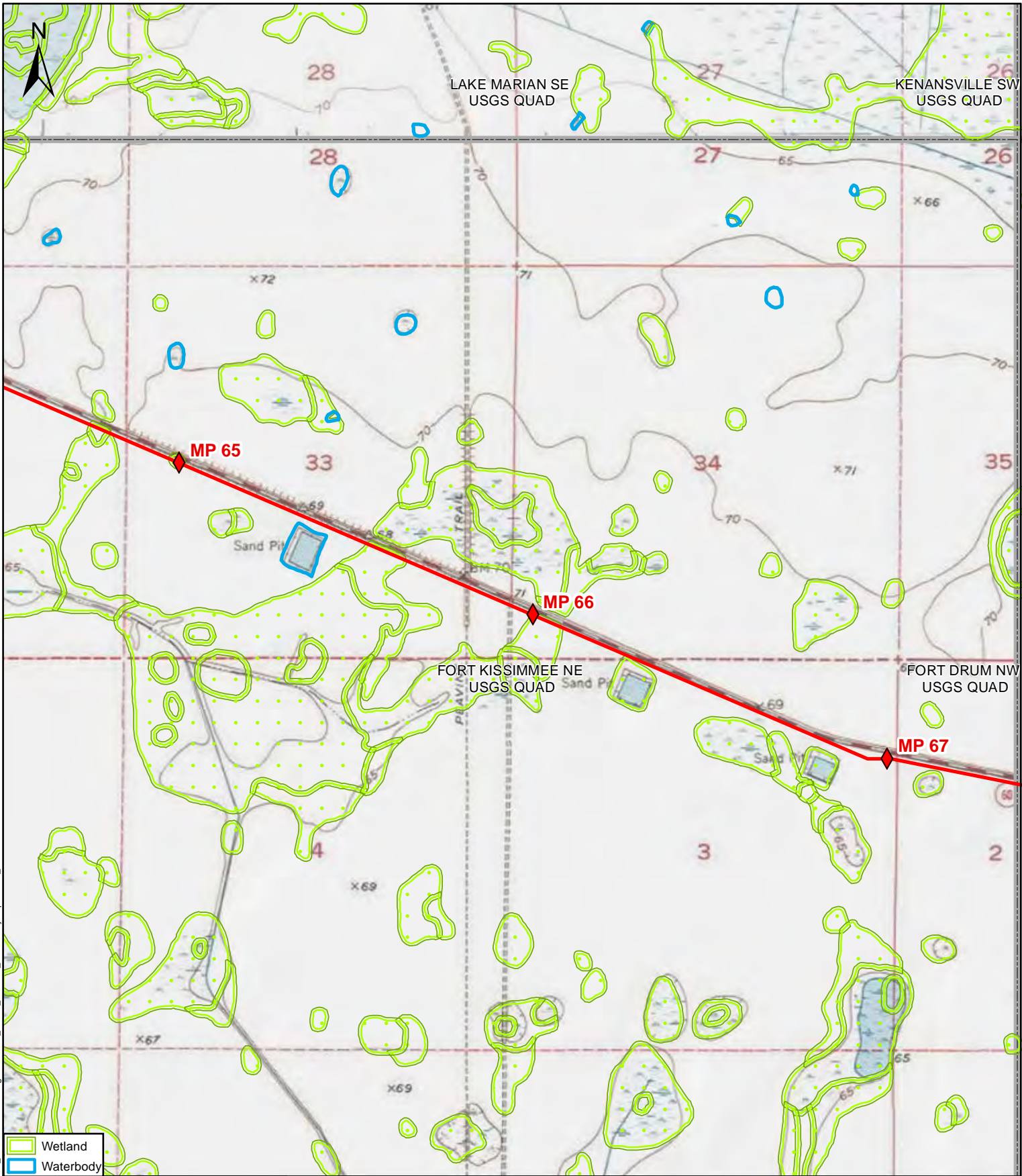
- Wetland
- Waterbody

DRAWN BY:	C.R.	DATE:	04/22/2014
REVIEWED BY:	M.B.	DATE:	04/22/2014
APPROVED BY:	R.G.	DATE:	04/22/2014
SCALE:	1" = 2,000"	SHEET:	21 OF 40
<div style="display: flex; justify-content: space-between; width: 100%;"> 0 2,000 4,000 </div> <div style="text-align: center; margin-top: 5px;"> <p>Feet</p> </div>			
A	04/22/2014	ISSUED FOR REVIEW	



USGS WETLAND AND WATERBODY MAPS

FLORIDA SOUTHEAST CONNECTION, LLC.
 FLORIDA SOUTHEAST CONNECTION
 PIPELINE PROJECT
 Osceola County, Florida



- Wetland
- Waterbody

DRAWN BY:	C.R.	DATE:	04/22/2014
REVIEWED BY:	M.B.	DATE:	04/22/2014
APPROVED BY:	R.G.	DATE:	04/22/2014
SCALE:	1" = 2,000"	SHEET:	22 OF 40
A	04/22/2014	ISSUED FOR REVIEW	

FLORIDA SOUTHEAST CONNECTION

Universal Pegasus

 INTERNATIONAL

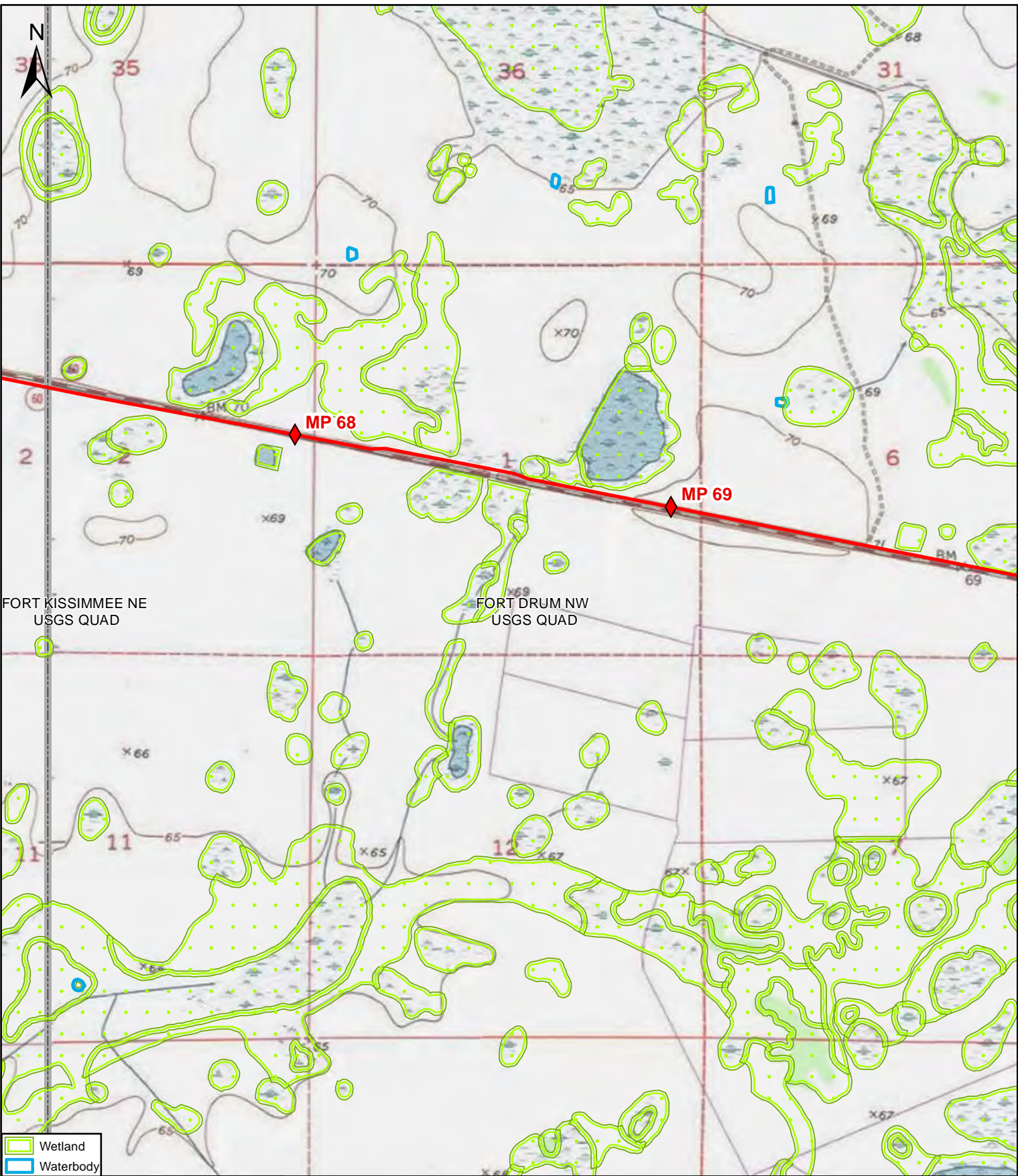
USGS WETLAND AND WATERBODY MAPS

FLORIDA SOUTHEAST CONNECTION, LLC.
FLORIDA SOUTHEAST CONNECTION
PIPELINE PROJECT

Osceola County, Florida

DRAWING NO: 21040-510-GNW-21600

REV. A



Path: Y:\Projects\21040_EPL_Florida_Southeast_Connection\Working\20140422_USGS_Wetland_Waterbody\Map\USGS_Scale1000.mxd

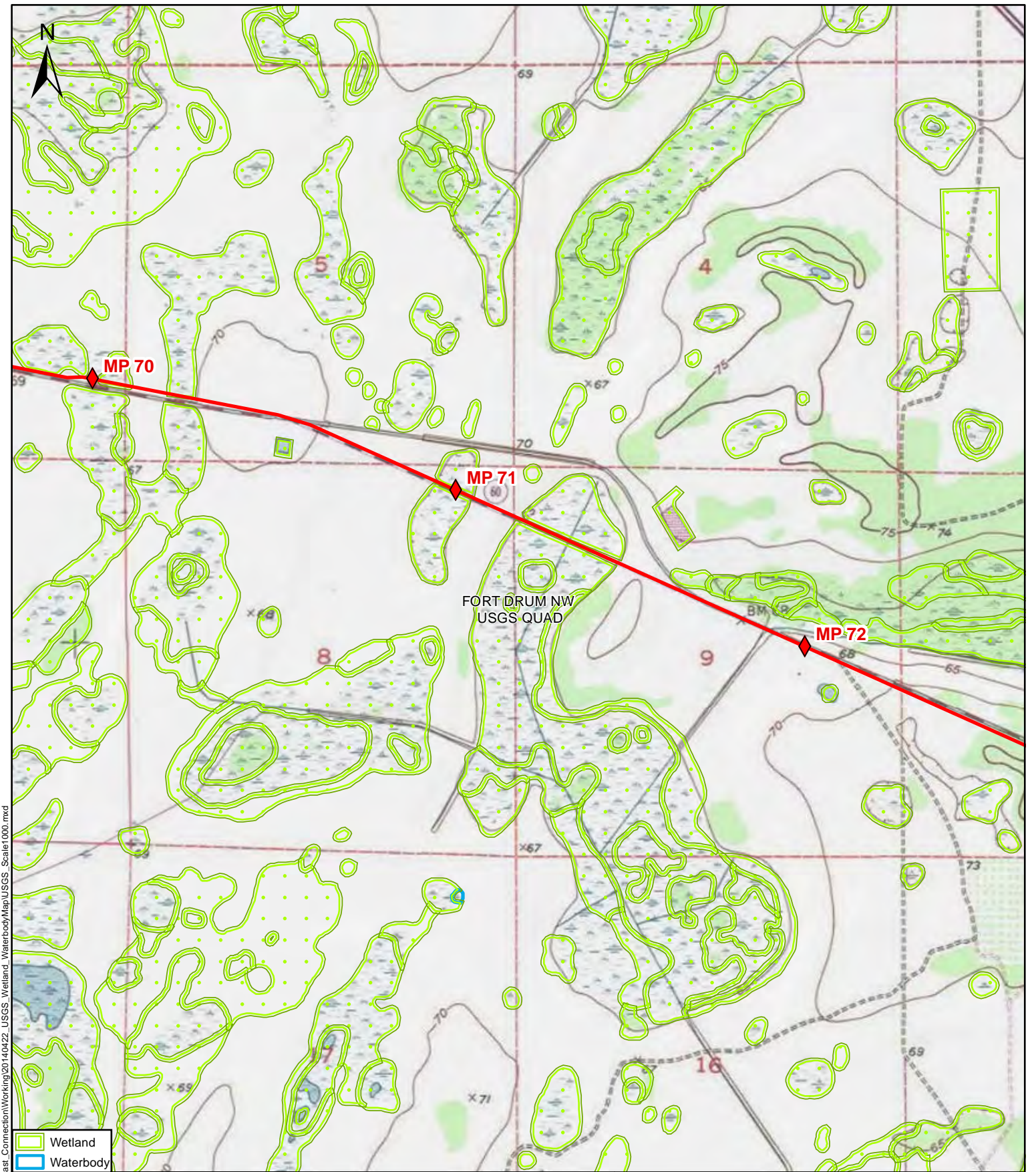
- Wetland
- Waterbody

DRAWN BY:	C.R.	DATE:	04/22/2014
REVIEWED BY:	M.B.	DATE:	04/22/2014
APPROVED BY:	R.G.	DATE:	04/22/2014
SCALE:	1" = 2,000"	SHEET:	23 OF 40
<div style="display: flex; justify-content: space-between; width: 100%;"> 0 2,000 4,000 </div> <div style="text-align: center; margin-top: 5px;"> <p>Feet</p> </div>			
A	04/22/2014	ISSUED FOR REVIEW	



USGS WETLAND AND WATERBODY MAPS

FLORIDA SOUTHEAST CONNECTION, LLC.
 FLORIDA SOUTHEAST CONNECTION
 PIPELINE PROJECT
 Osceola County, Florida



Path: Y:\Projects\21040_EPL_Florida_Southeast_Connection\Working\20140422_USGS_Wetland_Waterbody\Map\USGS_Scale1000.mxd

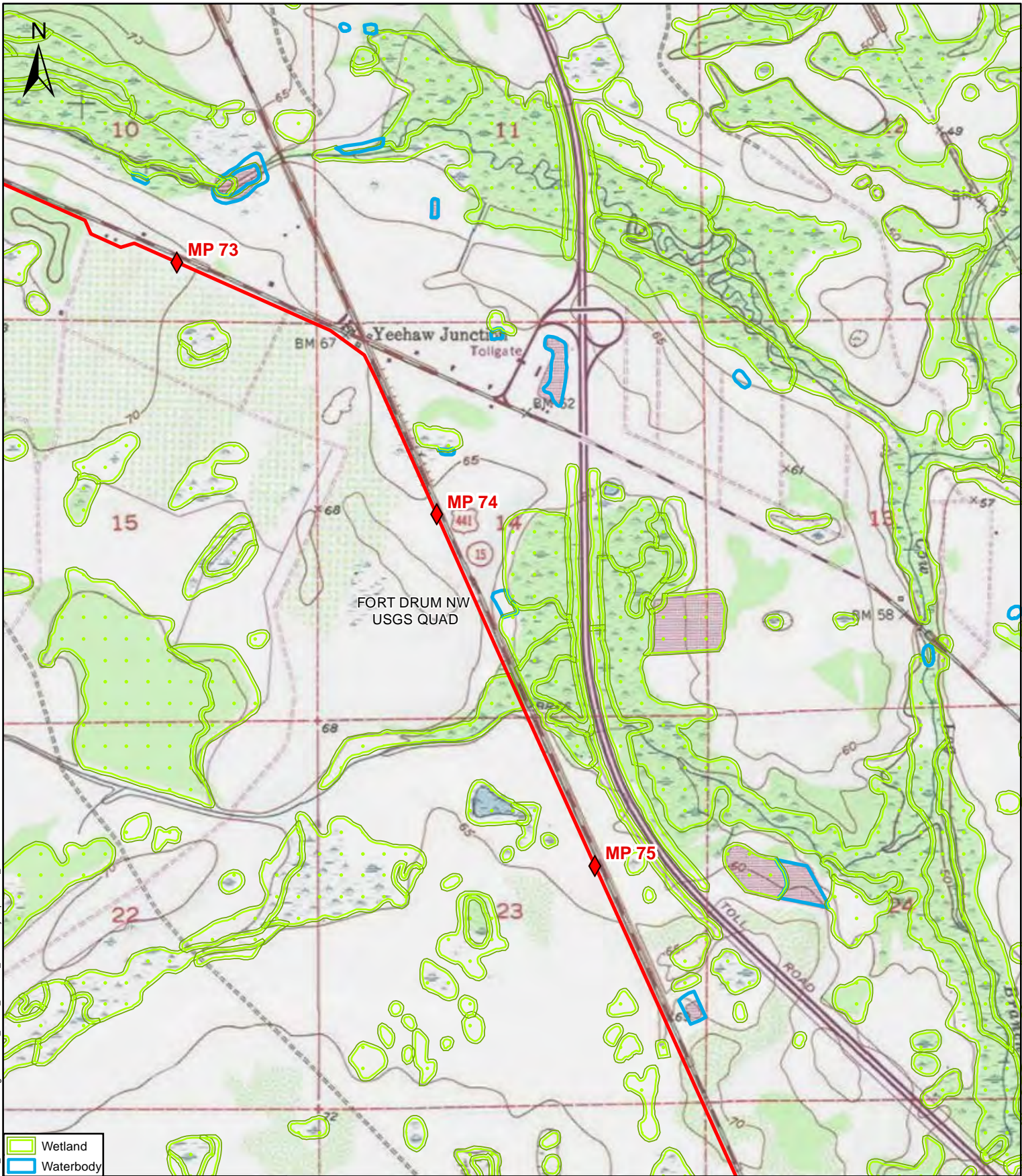
- Wetland
- Waterbody

DRAWN BY:	C.R.	DATE:	04/22/2014
REVIEWED BY:	M.B.	DATE:	04/22/2014
APPROVED BY:	R.G.	DATE:	04/22/2014
SCALE:	1" = 2,000"	SHEET:	24 OF 40
<div style="display: flex; justify-content: space-between; width: 100%;"> 0 2,000 4,000 </div> <div style="text-align: center; margin-top: 5px;"> </div>			
Feet			
A	04/22/2014	ISSUED FOR REVIEW	



USGS WETLAND AND WATERBODY MAPS

FLORIDA SOUTHEAST CONNECTION, LLC.
 FLORIDA SOUTHEAST CONNECTION
 PIPELINE PROJECT
 Osceola County, Florida



- Wetland
- Waterbody

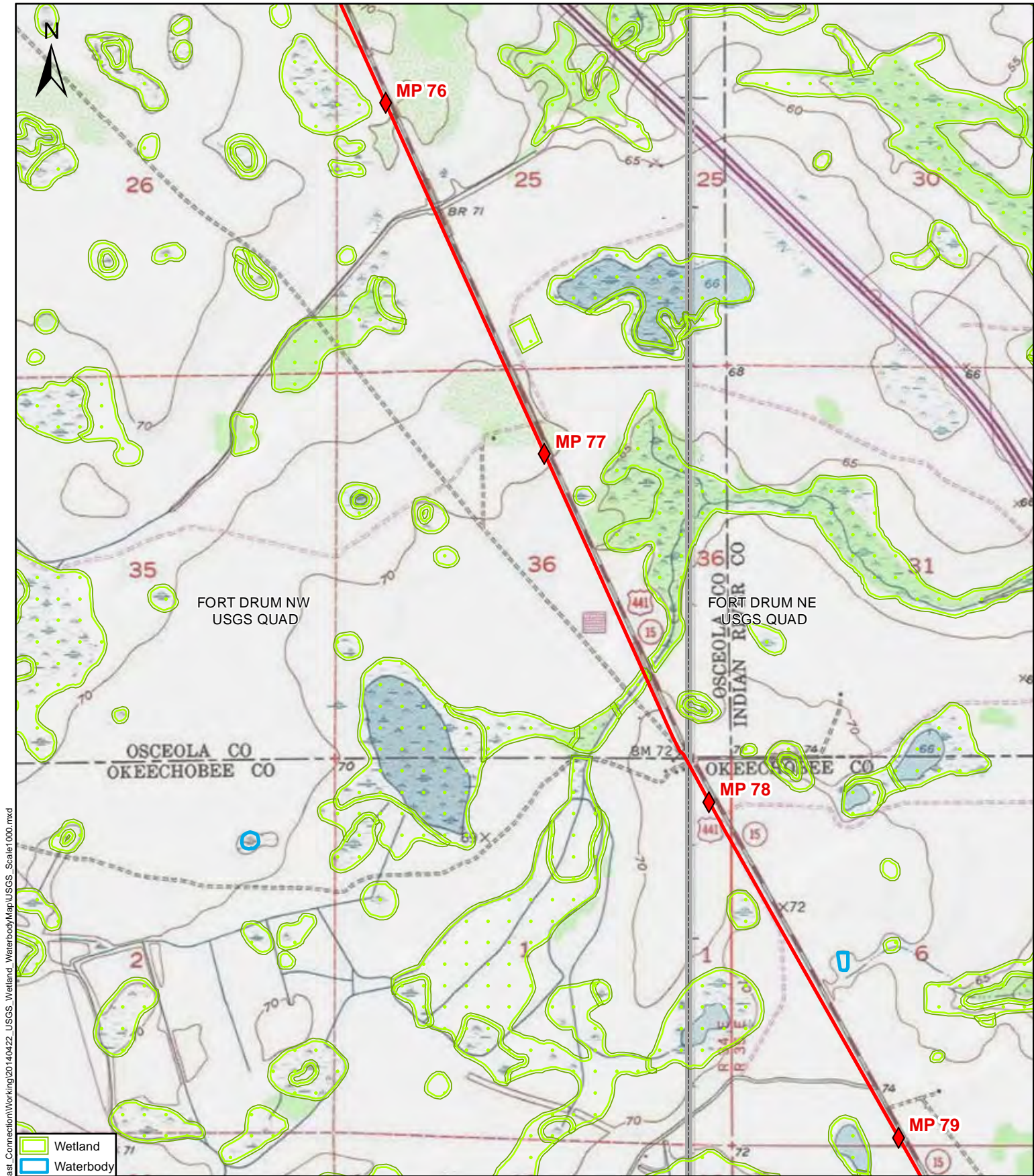
DRAWN BY:	C.R.	DATE:	04/22/2014
REVIEWED BY:	M.B.	DATE:	04/22/2014
APPROVED BY:	R.G.	DATE:	04/22/2014
SCALE:	1" = 2,000"	SHEET:	25 OF 40
<div style="display: flex; justify-content: space-between; width: 100%;"> 0 2,000 4,000 </div> <div style="text-align: center; margin-top: 5px;"> <p>Feet</p> </div>			
A	04/22/2014	ISSUED FOR REVIEW	



USGS WETLAND AND WATERBODY MAPS

FLORIDA SOUTHEAST CONNECTION, LLC.
 FLORIDA SOUTHEAST CONNECTION
 PIPELINE PROJECT
 Osceola County, Florida

Path: Y:\Projects\21040_EPL_Florida_Southeast_Connection\Working\2014\04\22_USGS_Wetland_Waterbody\Map\USGS_Scale1000.mxd



Path: Y:\Projects\21040_EPL_Florida_Southeast_Connection\Working\20140422_USGS_Wetland_Map\USGS_Scale1000.mxd

- Wetland
- Waterbody

DRAWN BY:	C.R.	DATE:	04/22/2014
REVIEWED BY:	M.B.	DATE:	04/22/2014
APPROVED BY:	R.G.	DATE:	04/22/2014
SCALE:	1" = 2,000"	SHEET:	26 OF 40
<div style="display: flex; justify-content: space-between; width: 100%;"> 0 2,000 4,000 </div> <div style="text-align: center; margin-top: 5px;"> <p>Feet</p> </div>			
A	04/22/2014	ISSUED FOR REVIEW	

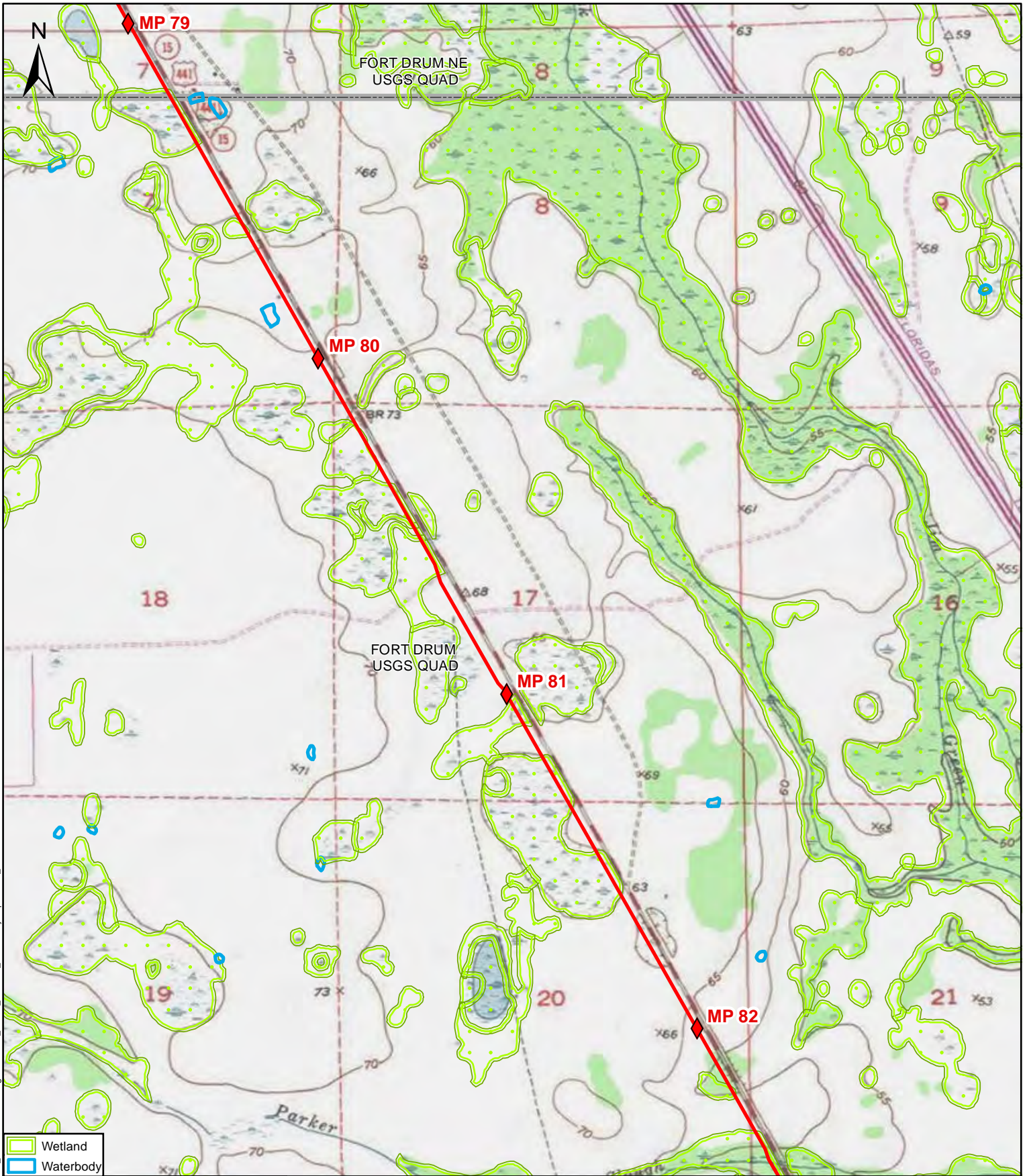


USGS WETLAND AND WATERBODY MAPS

FLORIDA SOUTHEAST CONNECTION, LLC.
 FLORIDA SOUTHEAST CONNECTION
 PIPELINE PROJECT

Osceola, Indian River & Okeechobee Counties, Florida

DRAWING NO: 21040-510-GNW-21604	REV. A
---------------------------------	--------



- Wetland
- Waterbody

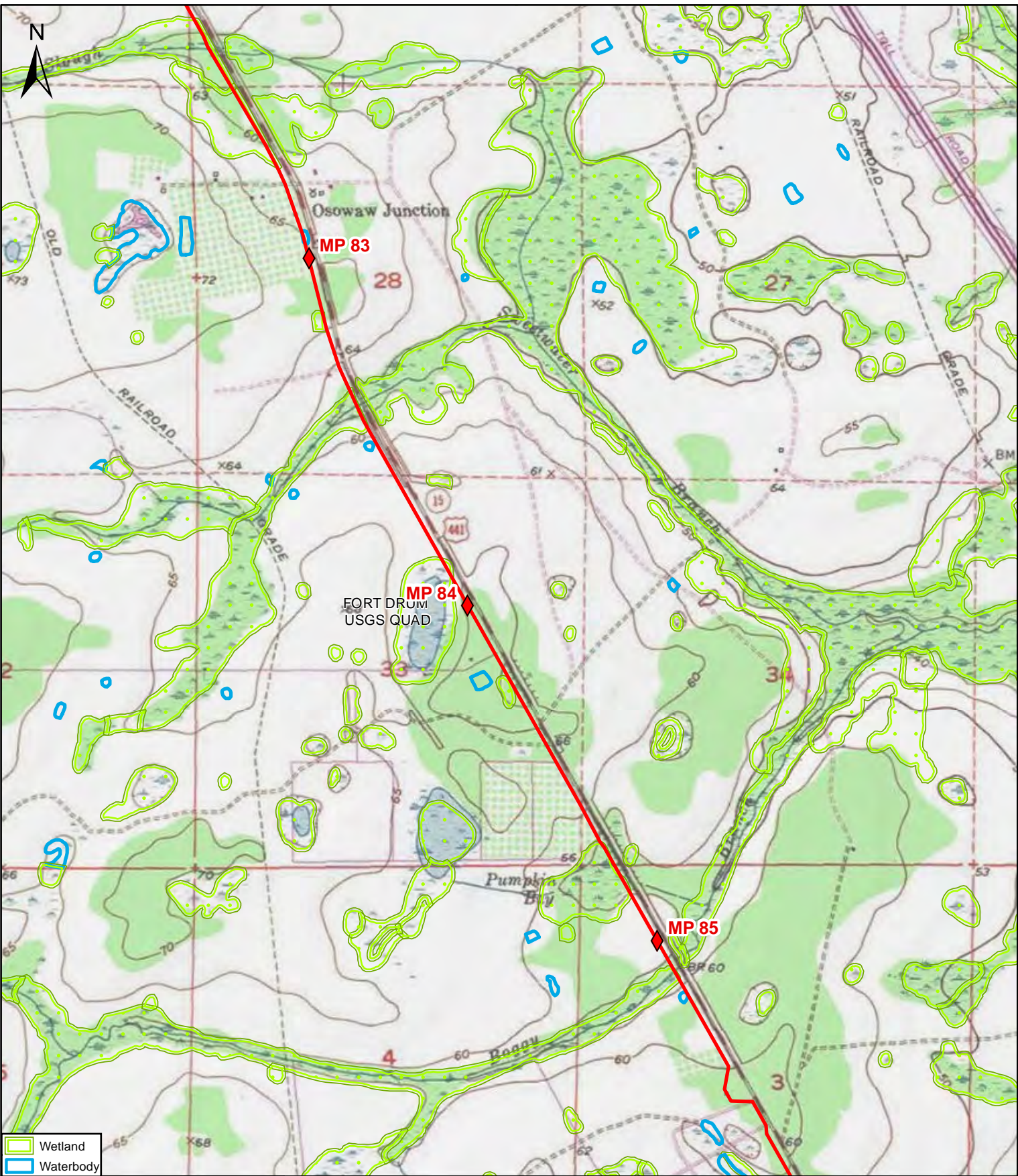
DRAWN BY:	C.R.	DATE:	04/22/2014
REVIEWED BY:	M.B.	DATE:	04/22/2014
APPROVED BY:	R.G.	DATE:	04/22/2014
SCALE:	1" = 2,000"	SHEET:	27 OF 40
A	04/22/2014	ISSUED FOR REVIEW	



USGS WETLAND AND WATERBODY MAPS

FLORIDA SOUTHEAST CONNECTION, LLC.
 FLORIDA SOUTHEAST CONNECTION
 PIPELINE PROJECT
 Okeechobee County, Florida

Path: Y:\Projects\21040_EPL_Florida_Southeast_Connection\Working\20140422_USGS_Wetland_Waterbody\Map\USGS_Scale1000.mxd



Wetland
 Waterbody

DRAWN BY:	C.R.	DATE:	04/22/2014
REVIEWED BY:	M.B.	DATE:	04/22/2014
APPROVED BY:	R.G.	DATE:	04/22/2014
SCALE:	1" = 2,000"	SHEET:	28 OF 40

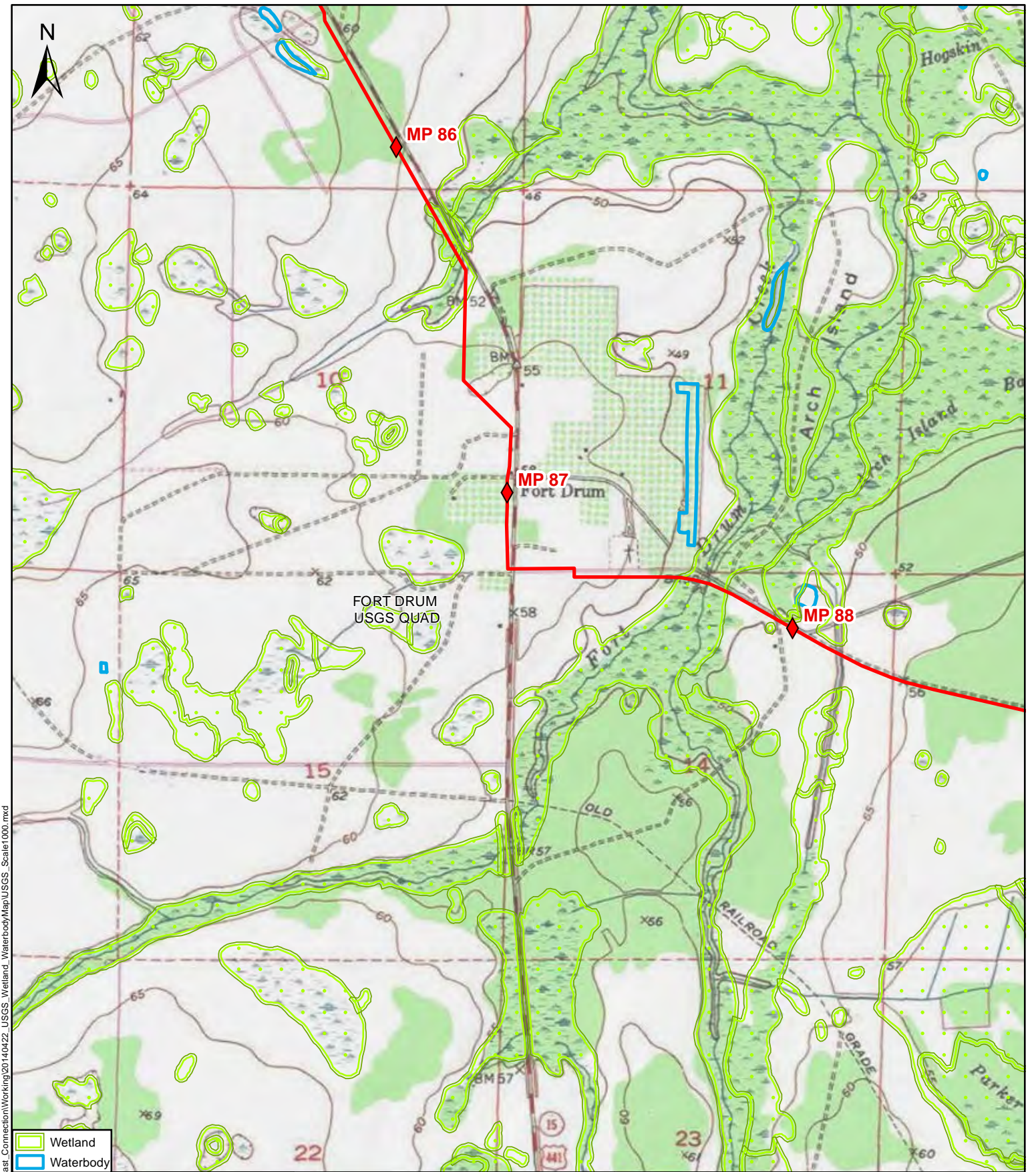
0 2,000 4,000	
Feet	
A	04/22/2014 ISSUED FOR REVIEW



USGS WETLAND AND WATERBODY MAPS

FLORIDA SOUTHEAST CONNECTION, LLC.
 FLORIDA SOUTHEAST CONNECTION
 PIPELINE PROJECT
 Okeechobee County, Florida

Path: Y:\Projects\21040_EPL_Florida_Southeast_Connection\Working\20140422_USGS_Wetland_Waterbody\Map\USGS_Scale1000.mxd



- Wetland
- Waterbody

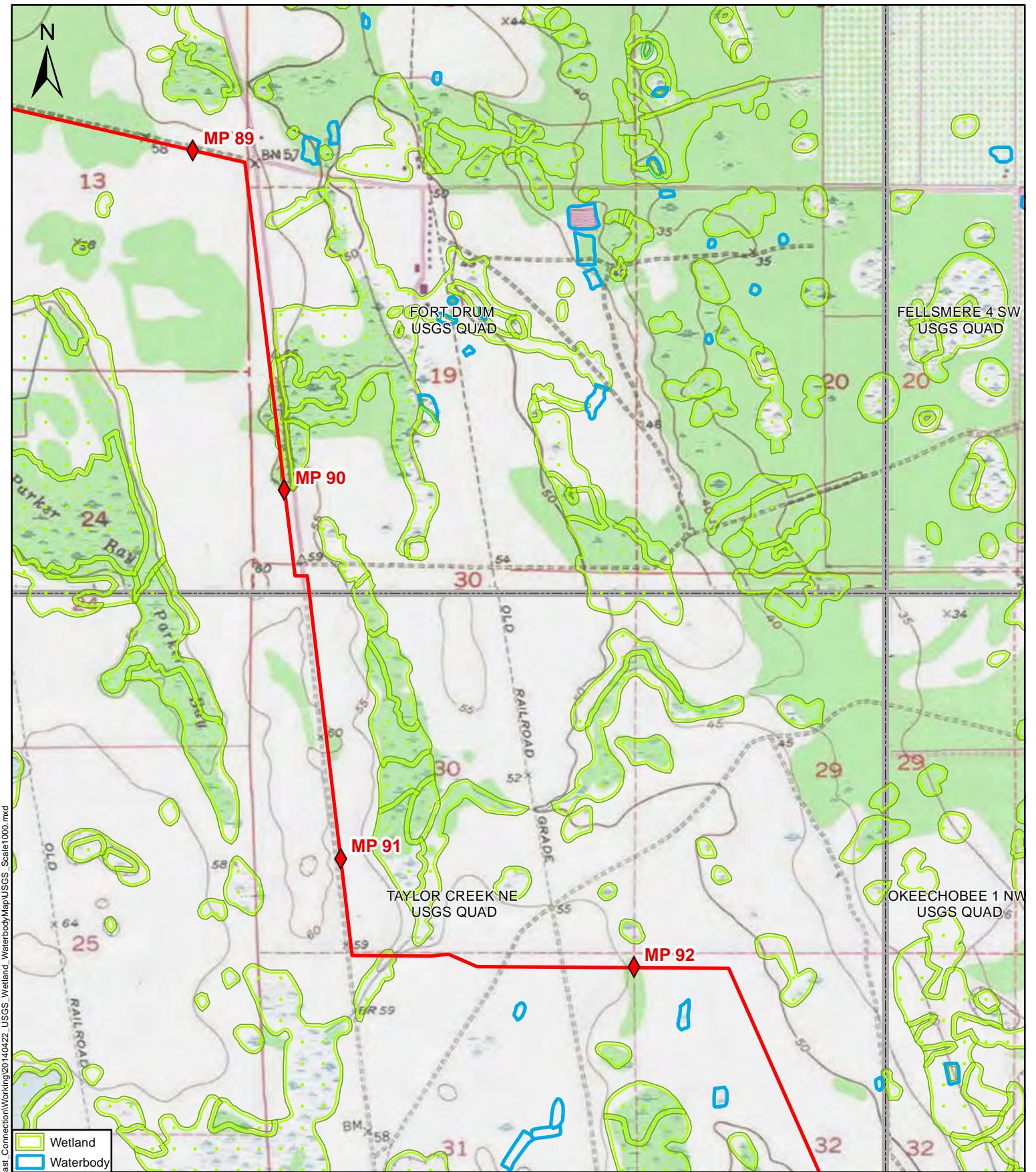
DRAWN BY:	C.R.	DATE:	04/22/2014
REVIEWED BY:	M.B.	DATE:	04/22/2014
APPROVED BY:	R.G.	DATE:	04/22/2014
SCALE:	1" = 2,000"	SHEET:	29 OF 40
<div style="display: flex; justify-content: space-between; width: 100%;"> 0 2,000 4,000 </div> <div style="text-align: center; margin-top: 5px;"> </div>			
Feet			
A	04/22/2014	ISSUED FOR REVIEW	



USGS WETLAND AND WATERBODY MAPS

FLORIDA SOUTHEAST CONNECTION, LLC.
 FLORIDA SOUTHEAST CONNECTION
 PIPELINE PROJECT
 Okeechobee County, Florida

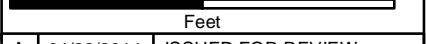
Path: Y:\Projects\21040_EPL_Florida_Southeast_Connection\Working\20140422_USGS_Wetland_Waterbody\Map\USGS_Scale1000.mxd



Path: Y:\Projects\21040_EFL_Florida_Southeast_Connection\Working\20140422_USGS_Wetland_Waterbody\Map\USGS_Scale1000.mxd

	Wetland
	Waterbody

DRAWN BY:	C.R.	DATE:	04/22/2014
REVIEWED BY:	M.B.	DATE:	04/22/2014
APPROVED BY:	R.G.	DATE:	04/22/2014
SCALE:	1" = 2,000"	SHEET:	30 OF 40



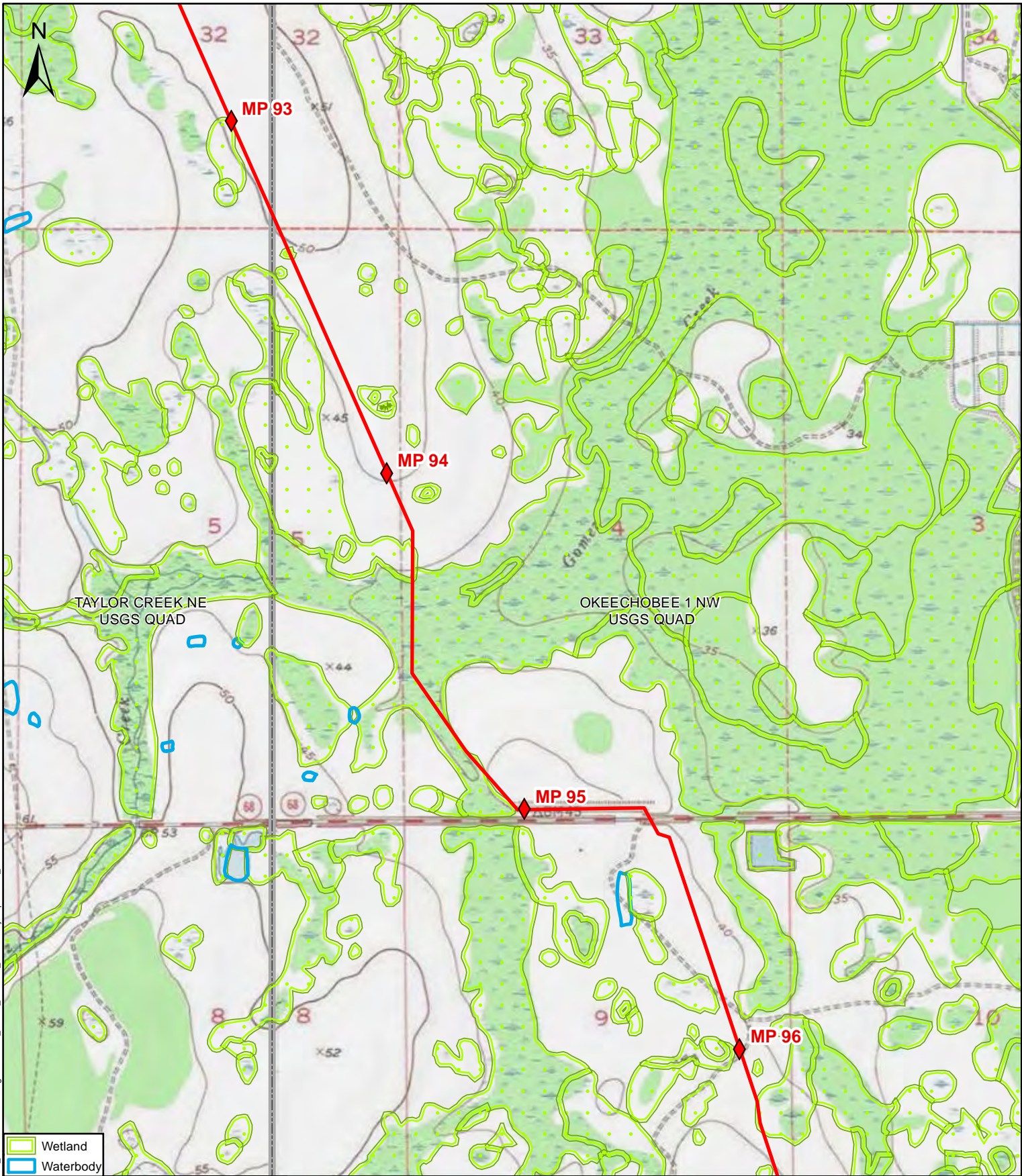
A	04/22/2014	ISSUED FOR REVIEW



USGS WETLAND AND WATERBODY MAPS

FLORIDA SOUTHEAST CONNECTION, LLC.
 FLORIDA SOUTHEAST CONNECTION
 PIPELINE PROJECT
 Okeechobee County, Florida

DRAWING NO:	21040-510-GNW-21608	REV.	A
-------------	---------------------	------	---



- Wetland
- Waterbody

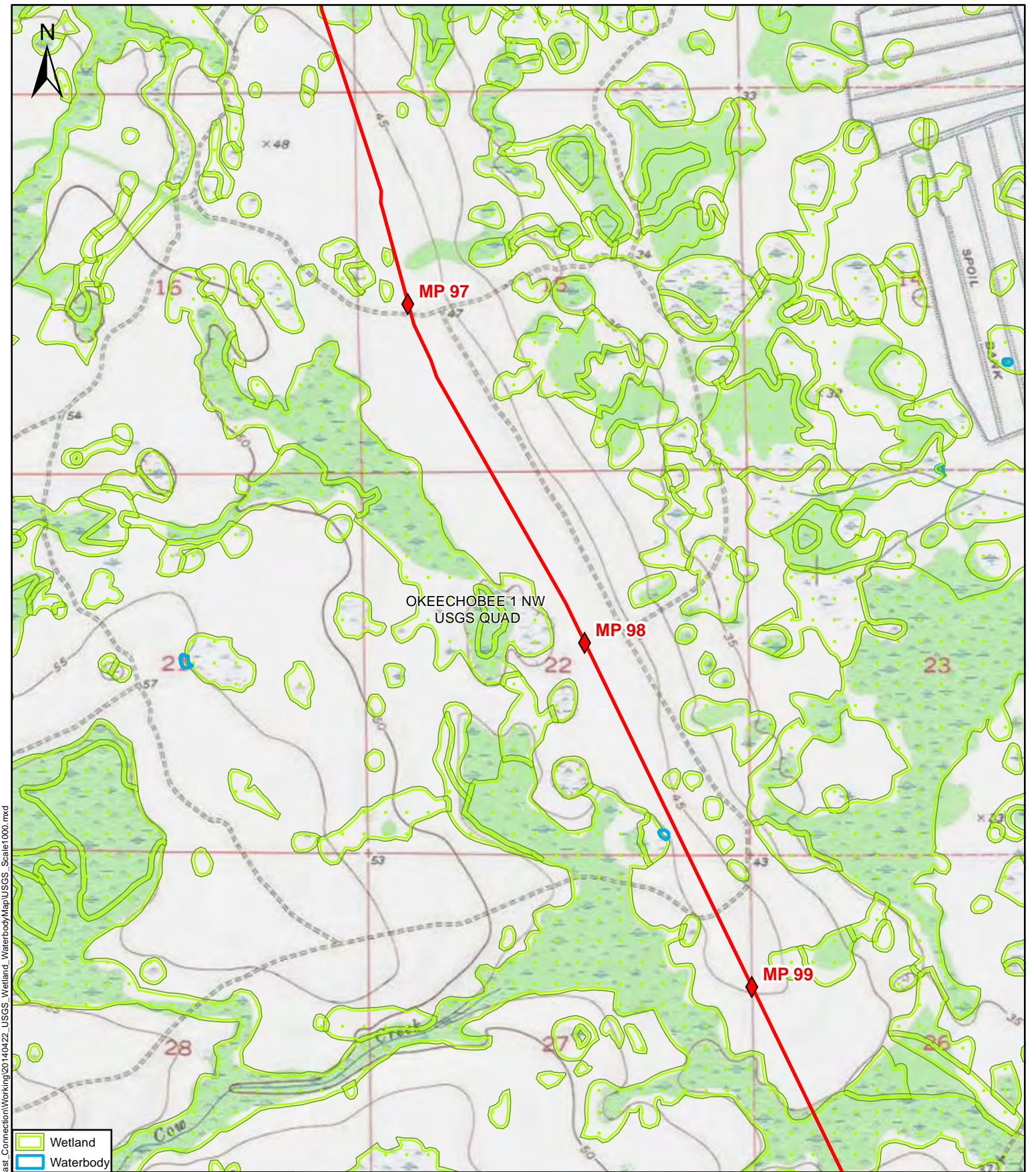
DRAWN BY:	C.R.	DATE:	04/22/2014
REVIEWED BY:	M.B.	DATE:	04/22/2014
APPROVED BY:	R.G.	DATE:	04/22/2014
SCALE:	1" = 2,000"	SHEET:	31 OF 40
<div style="display: flex; justify-content: space-between; width: 100%;"> 0 2,000 4,000 </div> <div style="text-align: center; margin-top: 5px;"> <p>Feet</p> </div>			
A	04/22/2014	ISSUED FOR REVIEW	



USGS WETLAND AND WATERBODY MAPS

FLORIDA SOUTHEAST CONNECTION, LLC.
 FLORIDA SOUTHEAST CONNECTION
 PIPELINE PROJECT
 Okeechobee County, Florida

Path: Y:\Projects\21040_EPL_Florida_Southeast_Connection\Working\20140422_USGS_Wetland_Waterbody\Map\USGS_Scale1000.mxd



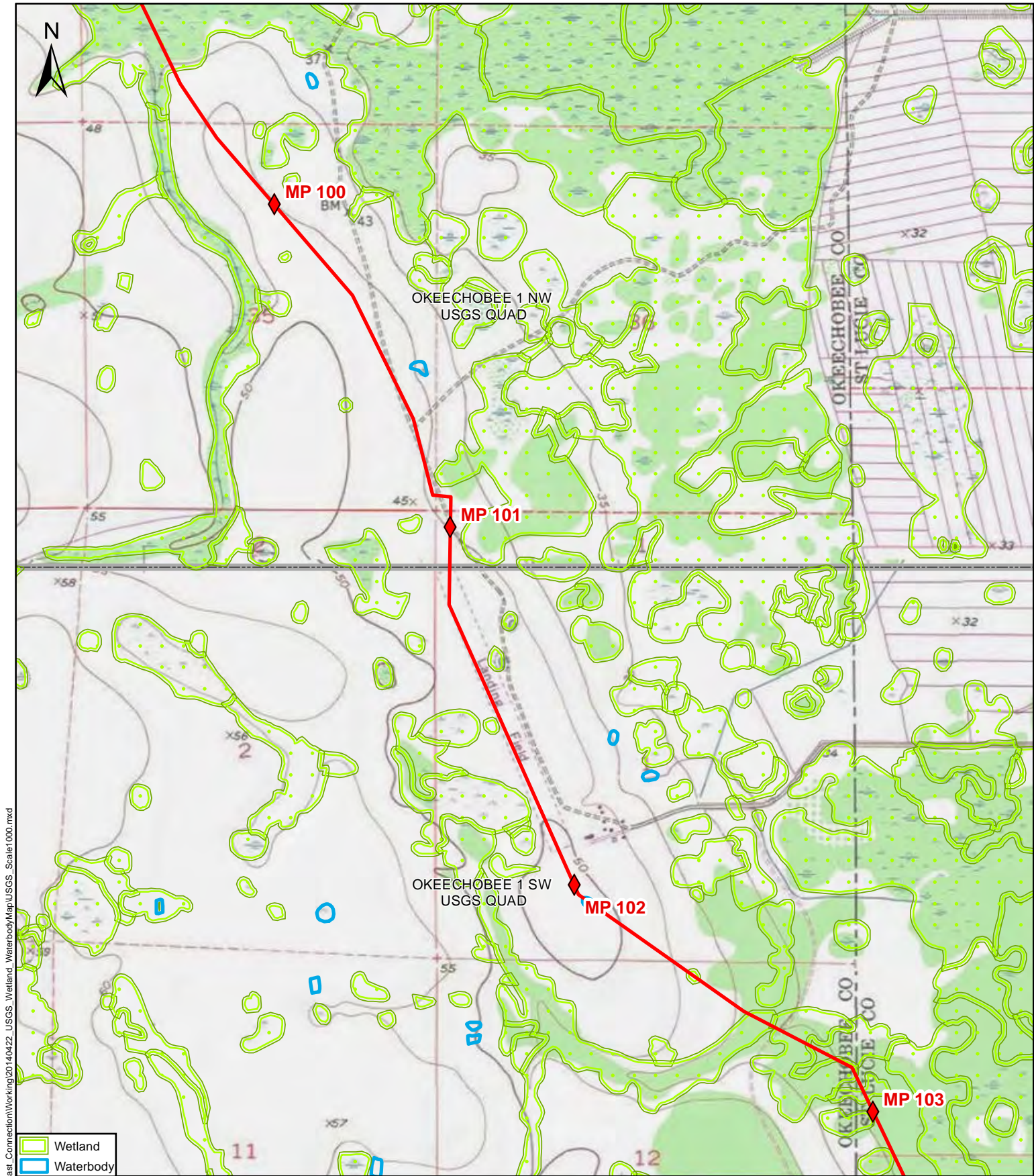
DRAWN BY:	C.R.	DATE:	04/22/2014
REVIEWED BY:	M.B.	DATE:	04/22/2014
APPROVED BY:	R.G.	DATE:	04/22/2014
SCALE:	1" = 2,000"	SHEET:	32 OF 40
A	04/22/2014	ISSUED FOR REVIEW	

USGS WETLAND AND WATERBODY MAPS

FLORIDA SOUTHEAST CONNECTION, LLC.
 FLORIDA SOUTHEAST CONNECTION
 PIPELINE PROJECT
 Okeechobee County, Florida

DRAWING NO:	21040-510-GNW-21610	REV.	A
-------------	---------------------	------	---

Path: Y:\Projects\21040_EPL_Florida_Southeast_Connection\Working\20140422_USGS_Wetland_Waterbody\Map\USGS_Scale1000.mxd

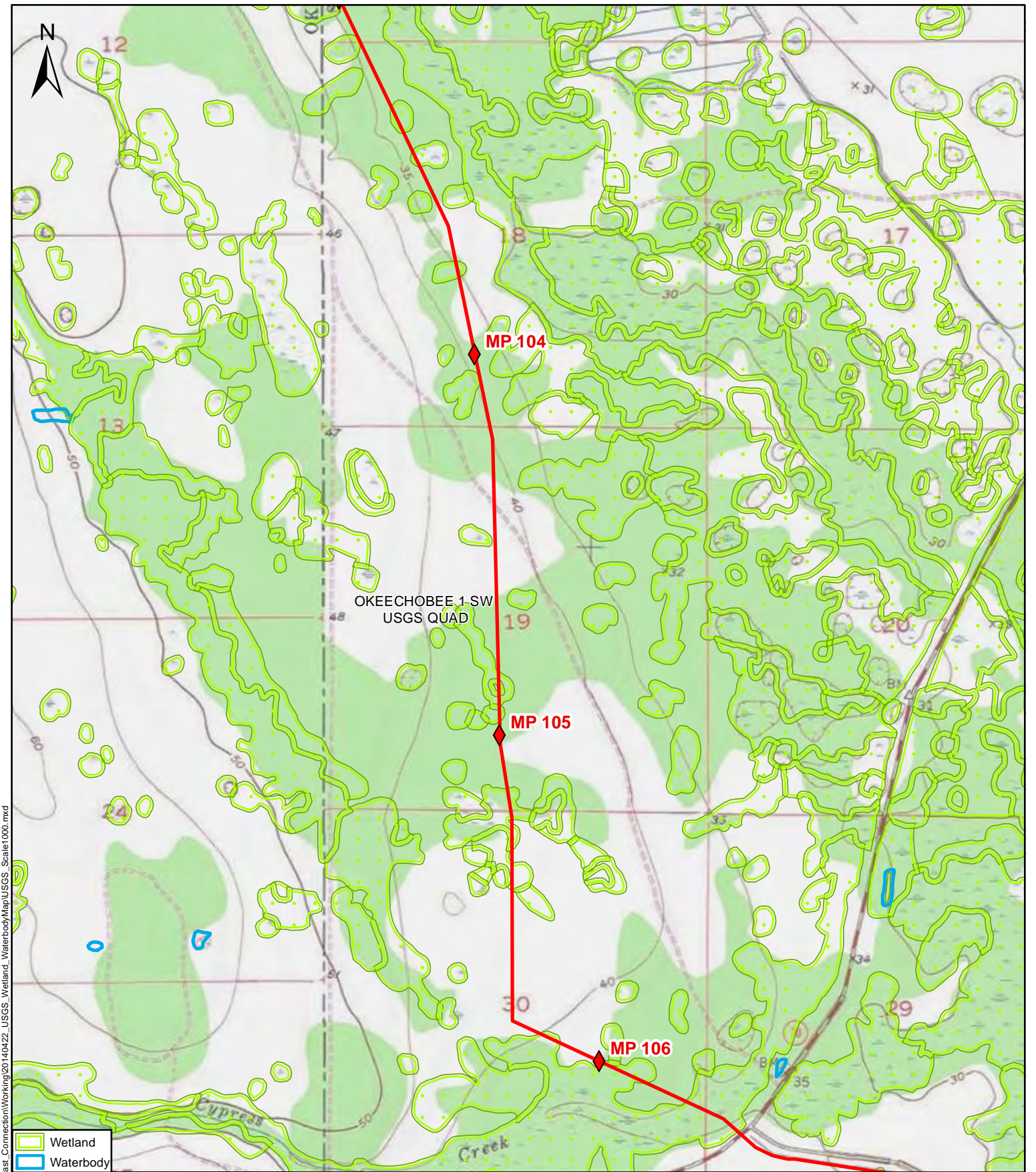


Path: Y:\Projects\21040_EPL_Florida_Southeast_Connection\Working\20140422_USGS_Wetland_Waterbody\Map\USGS_Scale1000.mxd

DRAWN BY:	C.R.	DATE:	04/22/2014
REVIEWED BY:	M.B.	DATE:	04/22/2014
APPROVED BY:	R.G.	DATE:	04/22/2014
SCALE:	1" = 2,000"	SHEET:	33 OF 40
0		2,000	
		4,000	
Feet			
A	04/22/2014	ISSUED FOR REVIEW	



USGS WETLAND AND WATERBODY MAPS	
FLORIDA SOUTHEAST CONNECTION, LLC. FLORIDA SOUTHEAST CONNECTION PIPELINE PROJECT	
Okeechobee & St. Lucie Counties, Florida	
DRAWING NO:	21040-510-GNW-21611
REV.	A



DRAWN BY:	C.R.	DATE:	04/22/2014
REVIEWED BY:	M.B.	DATE:	04/22/2014
APPROVED BY:	R.G.	DATE:	04/22/2014
SCALE:	1" = 2,000"	SHEET:	34 OF 40
0		2,000	
		4,000	
Feet			
A	04/22/2014	ISSUED FOR REVIEW	



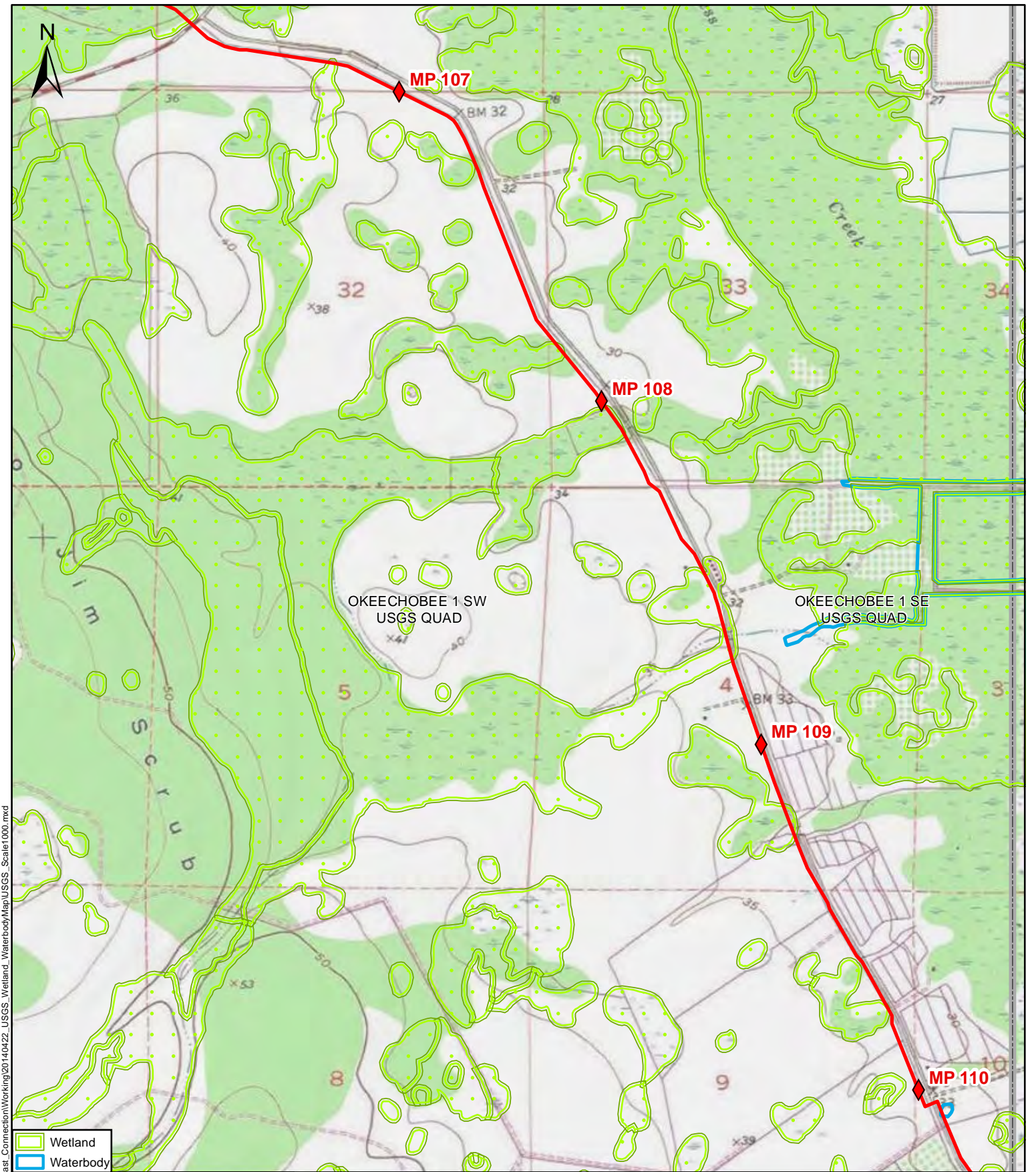
USGS WETLAND AND WATERBODY MAPS

FLORIDA SOUTHEAST CONNECTION, LLC.
 FLORIDA SOUTHEAST CONNECTION
 PIPELINE PROJECT

Okeechobee & St. Lucie Counties, Florida

DRAWING NO:	21040-510-GNW-21612	REV.	A
-------------	---------------------	------	---

Path: Y:\Projects\21040_EPL_Florida_Southeast_Connection\Working\20140422_USGS_Wetland_Map\USGS_Scale1000.mxd



Path: Y:\Projects\21040_EPL_Florida_Southeast_Connection\Working\20140422_USGS_Wetland_Waterbody\Map\USGS_Scale1000.mxd

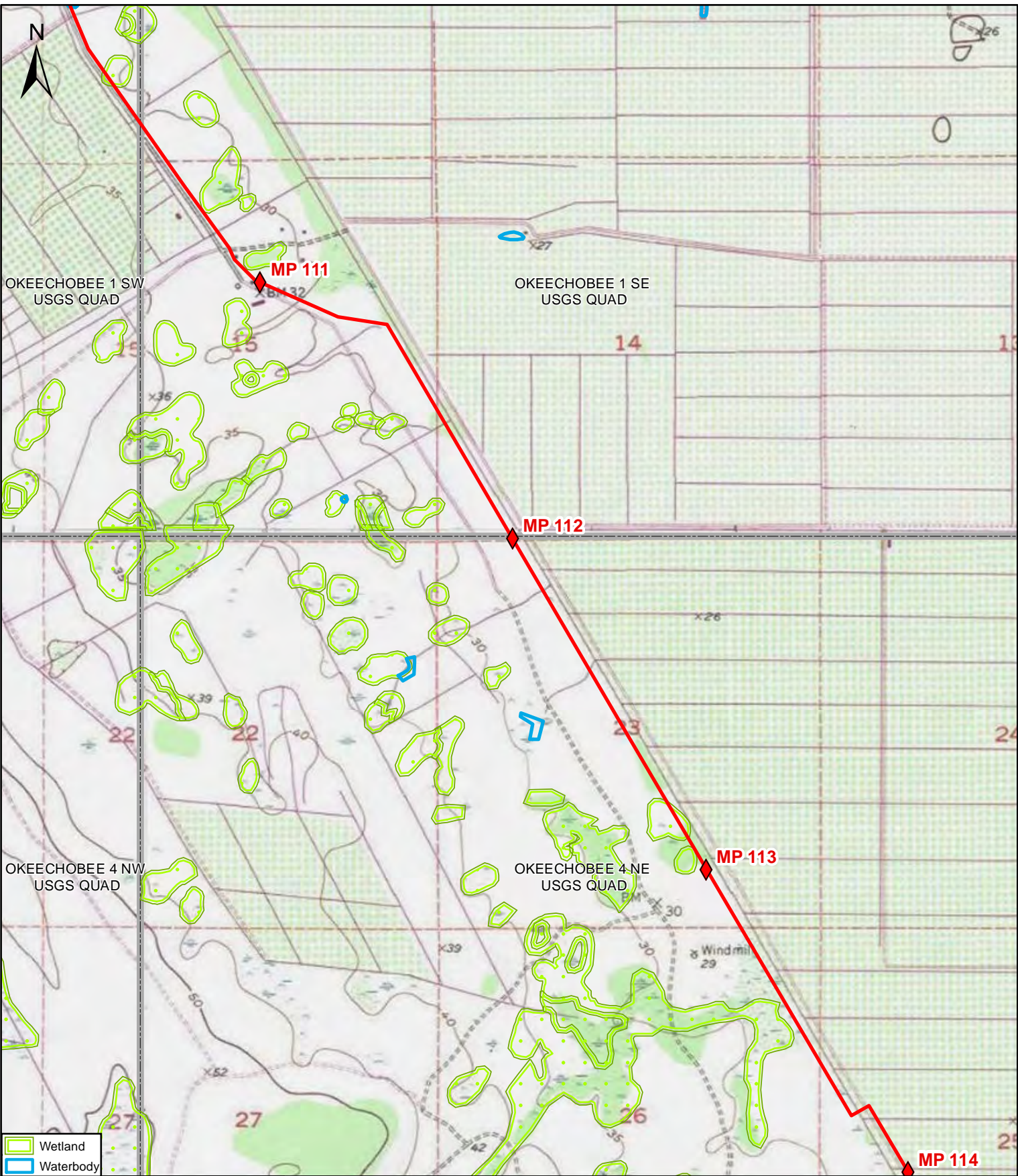
- Wetland
- Waterbody

DRAWN BY:	C.R.	DATE:	04/22/2014
REVIEWED BY:	M.B.	DATE:	04/22/2014
APPROVED BY:	R.G.	DATE:	04/22/2014
SCALE:	1" = 2,000"	SHEET:	35 OF 40
<div style="display: flex; justify-content: space-between; align-items: center;"> 0 2,000 4,000 </div> <div style="display: flex; justify-content: center; align-items: center; margin-top: 5px;"> <div style="width: 100%; border-bottom: 1px solid black; position: relative;"> 0 4,000 </div> </div> <p style="text-align: center; margin-top: 5px;">Feet</p>			
A	04/22/2014	ISSUED FOR REVIEW	



USGS WETLAND AND WATERBODY MAPS

FLORIDA SOUTHEAST CONNECTION, LLC.
 FLORIDA SOUTHEAST CONNECTION
 PIPELINE PROJECT
 St. Lucie County, Florida



- Wetland
- Waterbody

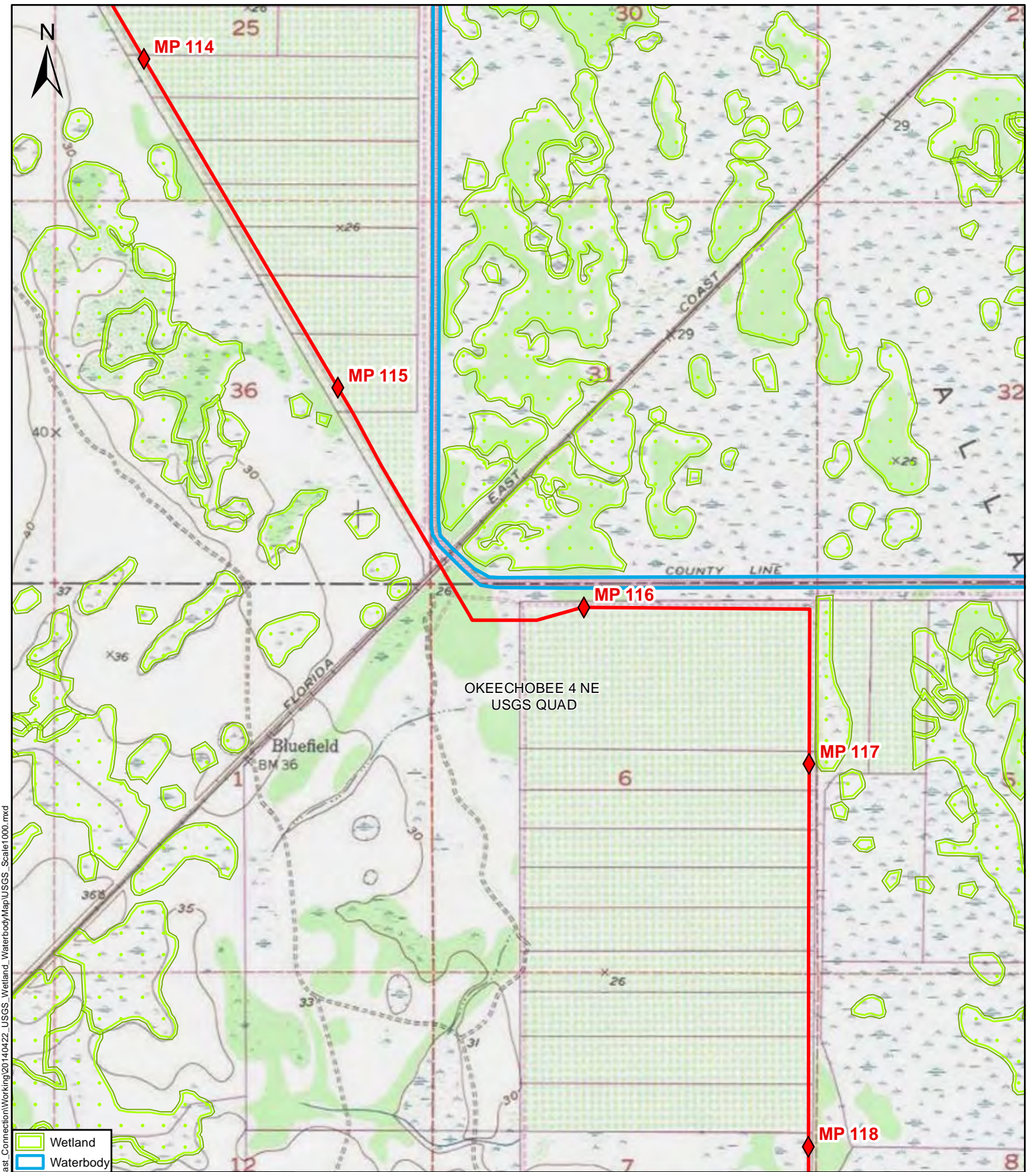
DRAWN BY:	C.R.	DATE:	04/22/2014
REVIEWED BY:	M.B.	DATE:	04/22/2014
APPROVED BY:	R.G.	DATE:	04/22/2014
SCALE:	1" = 2,000"	SHEET:	36 OF 40
A	04/22/2014	ISSUED FOR REVIEW	



USGS WETLAND AND WATERBODY MAPS

FLORIDA SOUTHEAST CONNECTION, LLC.
 FLORIDA SOUTHEAST CONNECTION
 PIPELINE PROJECT
 St. Lucie County, Florida

Path: Y:\Projects\21040_EPL_Florida_Southeast_Connection\Working\20140422_USGS_Wetland_Waterbody\Map\USGS_Scale1000.mxd



Path: Y:\Projects\21040_EPL_Florida_Southeast_Connection\Working\20140422_USGS_Wetland_Waterbody\Map\USGS_Scale1000.mxd

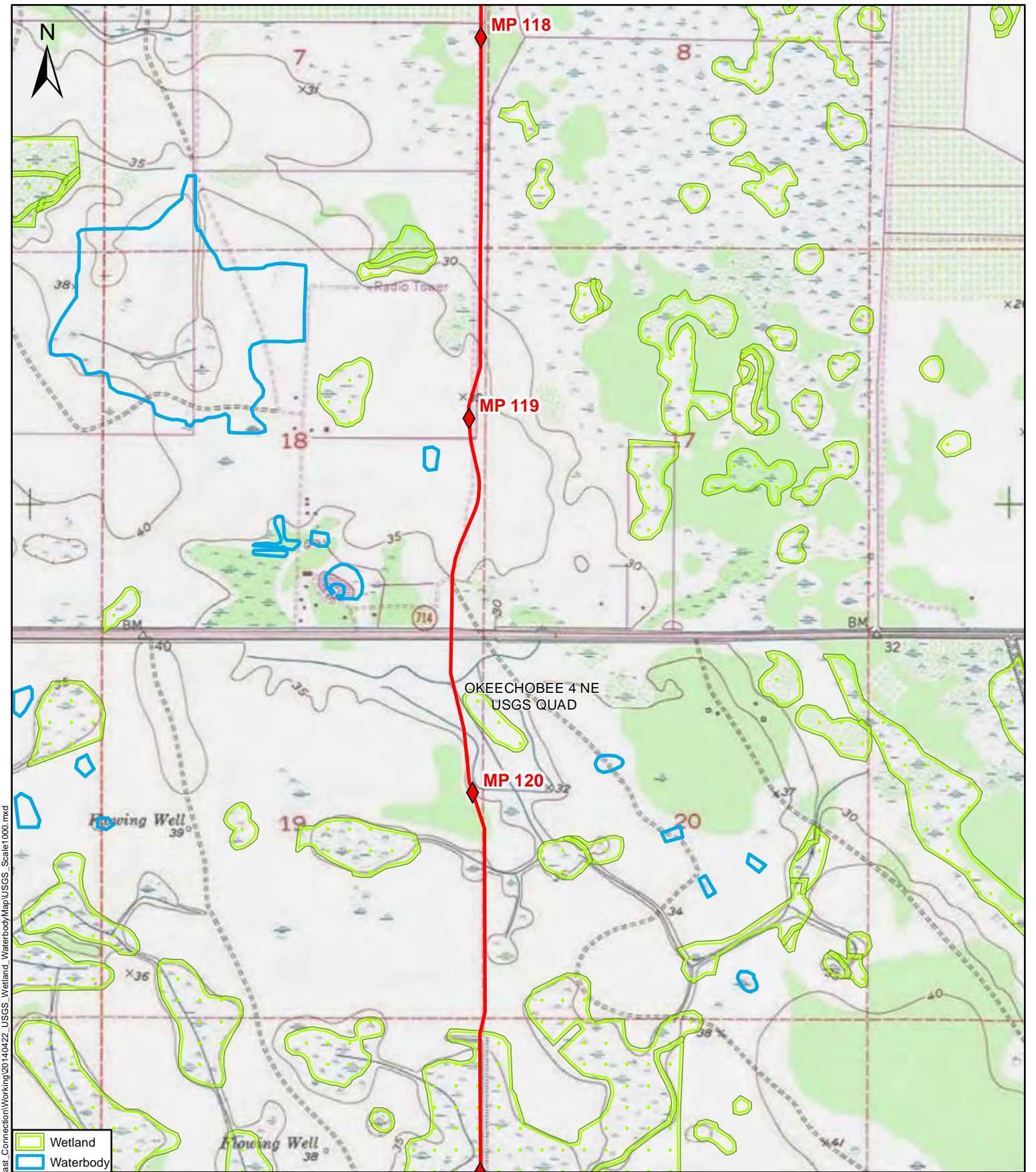
- Wetland
- Waterbody

DRAWN BY:	C.R.	DATE:	04/22/2014
REVIEWED BY:	M.B.	DATE:	04/22/2014
APPROVED BY:	R.G.	DATE:	04/22/2014
SCALE:	1" = 2,000"	SHEET:	37 OF 40
<div style="display: flex; justify-content: space-between; width: 100%;"> 0 2,000 4,000 </div> <div style="text-align: center; margin-top: 5px;"> </div>			
Feet			
A	04/22/2014	ISSUED FOR REVIEW	



USGS WETLAND AND WATERBODY MAPS

FLORIDA SOUTHEAST CONNECTION, LLC.
 FLORIDA SOUTHEAST CONNECTION
 PIPELINE PROJECT
 St. Lucie & Martin Counties, Florida



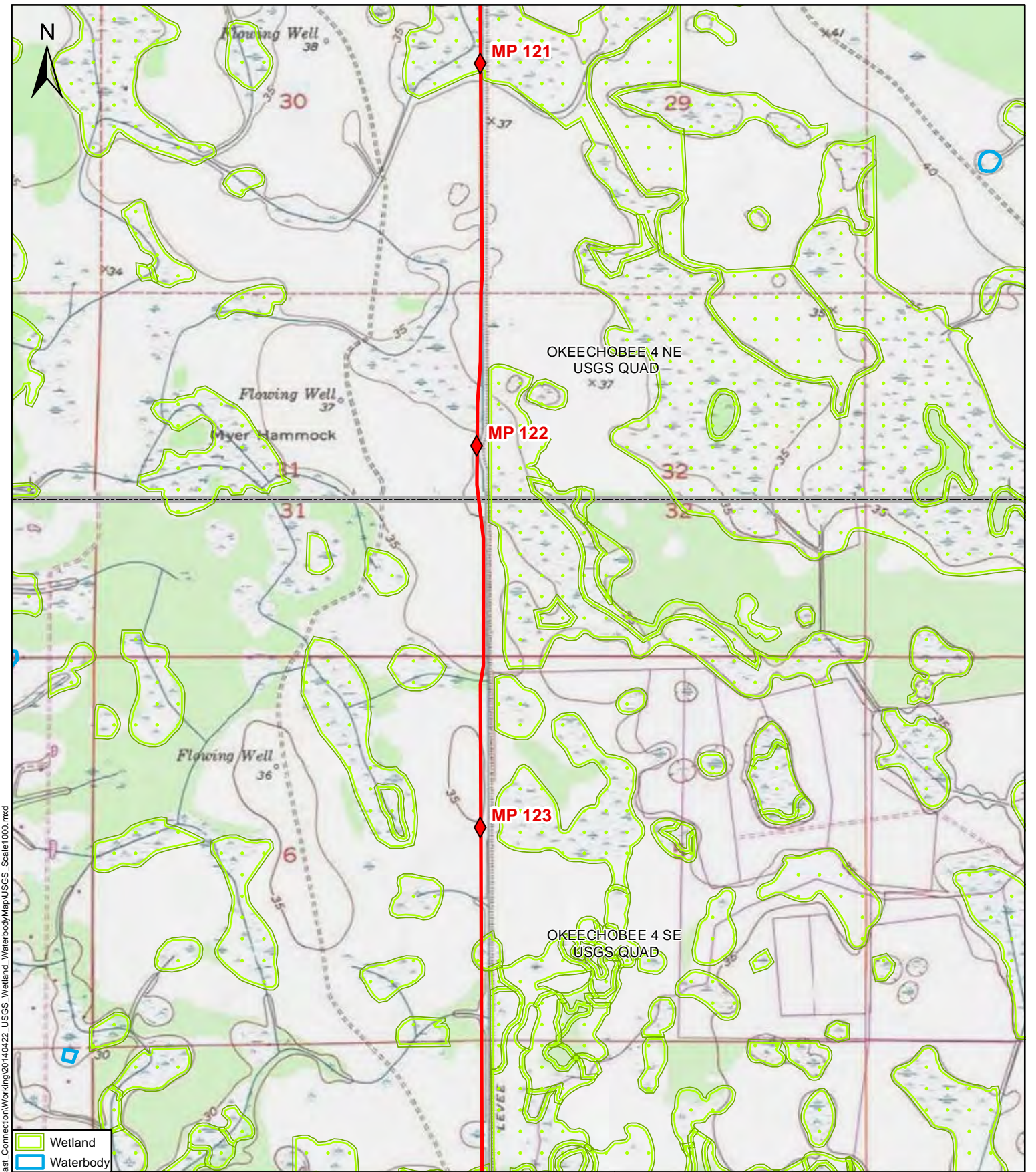
DRAWN BY:	C.R.	DATE:	04/22/2014
REVIEWED BY:	M.B.	DATE:	04/22/2014
APPROVED BY:	R.G.	DATE:	04/22/2014
SCALE:	1" = 2,000"	SHEET:	38 OF 40
0		2,000	
		4,000	
Feet			
A	04/22/2014	ISSUED FOR REVIEW	



USGS WETLAND AND WATERBODY MAPS

FLORIDA SOUTHEAST CONNECTION, LLC.
 FLORIDA SOUTHEAST CONNECTION
 PIPELINE PROJECT
 Martin County, Florida

Path: Y:\Projects\21040_EPL_Florida_Southeast_Connection\Working\20140422_USGS_Wetland_Waterbody\Map\USGS_Scale1000.mxd



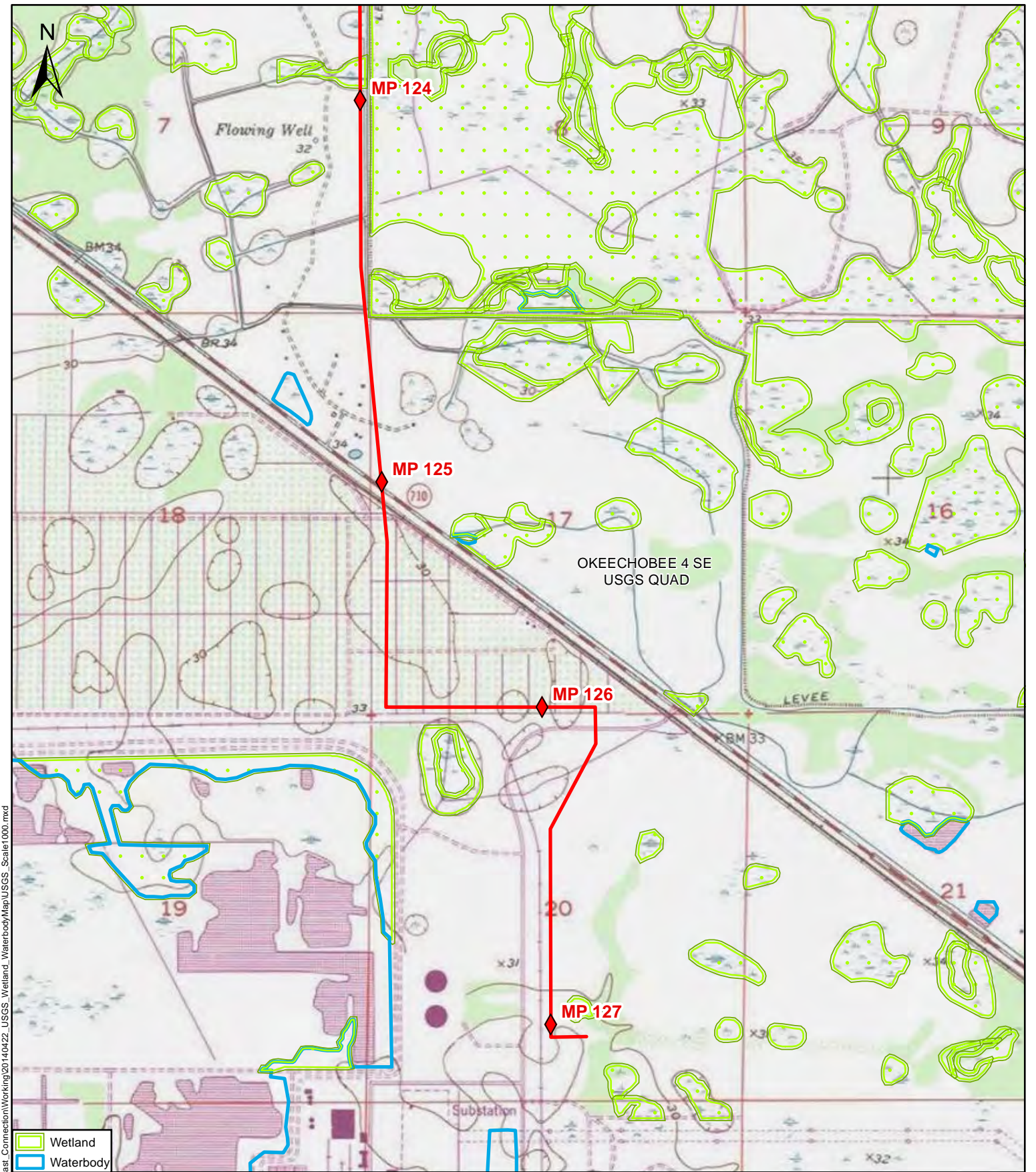
DRAWN BY:	C.R.	DATE:	04/22/2014
REVIEWED BY:	M.B.	DATE:	04/22/2014
APPROVED BY:	R.G.	DATE:	04/22/2014
SCALE:	1" = 2,000"	SHEET:	39 OF 40
0		2,000	
		4,000	
Feet			
A	04/22/2014	ISSUED FOR REVIEW	


FLORIDA SOUTHEAST CONNECTION

Universal Pegasus
 INTERNATIONAL

USGS WETLAND AND WATERBODY MAPS
 FLORIDA SOUTHEAST CONNECTION, LLC.
 FLORIDA SOUTHEAST CONNECTION
 PIPELINE PROJECT
 Martin County, Florida
 DRAWING NO: 21040-510-GNW-21617 REV. A

Path: Y:\Projects\21040_EPL_Florida_Southeast_Connection\Working\20140422_USGS_Wetland_Waterbody\Map\USGS_Scale1000.mxd



Path: Y:\Projects\21040_EPL_Florida_Southeast_Connection\Working\20140422_USGS_Wetland_Map\USGS_Scale1000.mxd

- Wetland
- Waterbody

DRAWN BY:	C.R.	DATE:	04/22/2014
REVIEWED BY:	M.B.	DATE:	04/22/2014
APPROVED BY:	R.G.	DATE:	04/22/2014
SCALE:	1" = 2,000"	SHEET:	40 OF 40
<div style="display: flex; justify-content: space-between; width: 100%;"> 0 2,000 4,000 </div> <div style="text-align: center; margin-top: 5px;"> </div>			
Feet			
A	04/22/2014	ISSUED FOR REVIEW	



USGS WETLAND AND WATERBODY MAPS

FLORIDA SOUTHEAST CONNECTION, LLC.
 FLORIDA SOUTHEAST CONNECTION
 PIPELINE PROJECT
 Martin County, Florida