

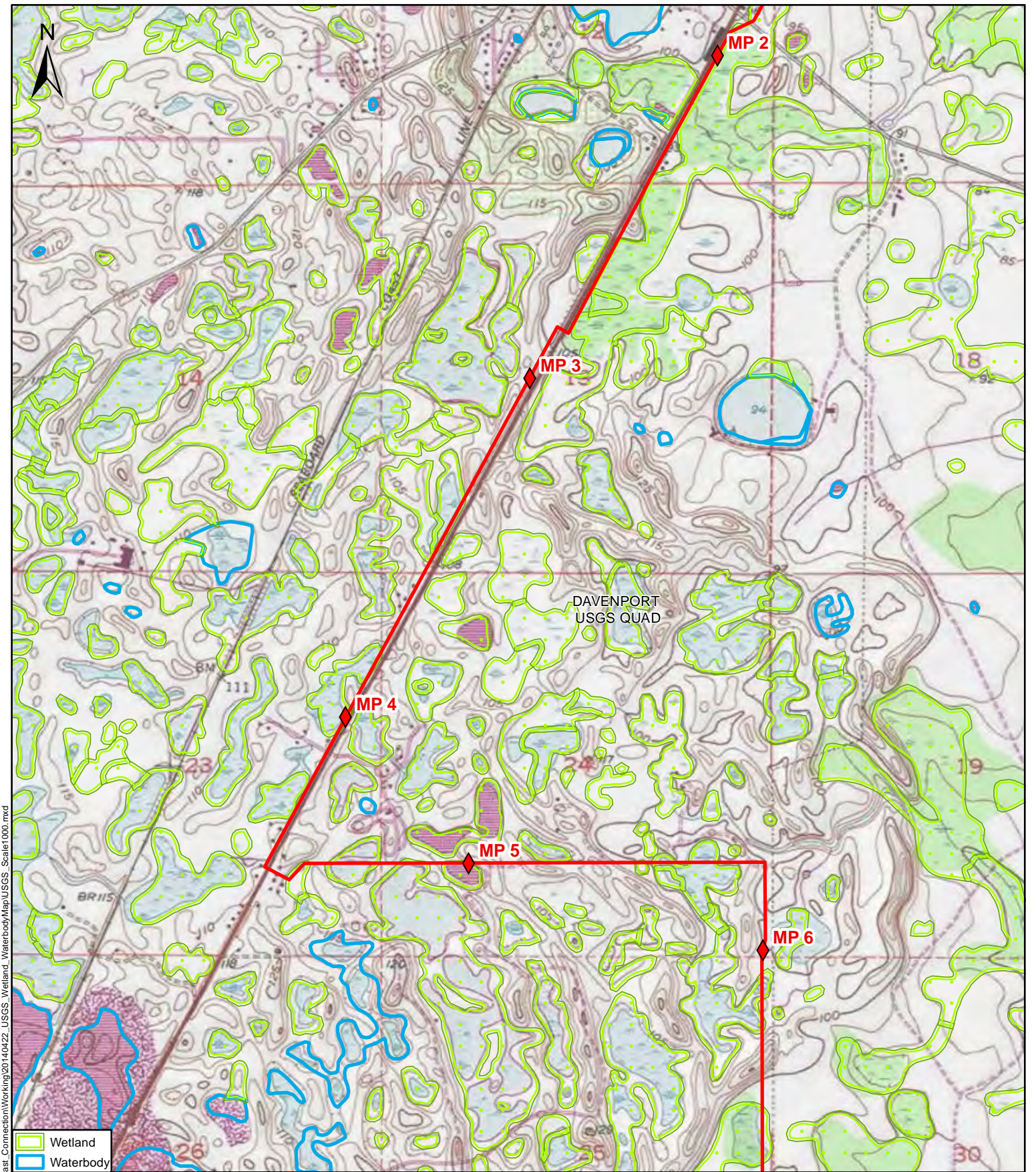
Path: Y:\Projects\21040_EPL_Florida_Southeast_Connection\Working\20140422_USGS_Wetland_Waterbody\Map\USGS_Scale1000.mxd

DRAWN BY:	C.R.	DATE:	04/22/2014
REVIEWED BY:	M.B.	DATE:	04/22/2014
APPROVED BY:	R.G.	DATE:	04/22/2014
SCALE:	1" = 2,000"	SHEET:	1 OF 40
0 2,000 4,000			
Feet			
A	04/22/2014	ISSUED FOR REVIEW	



USGS WETLAND AND WATERBODY MAPS

FLORIDA SOUTHEAST CONNECTION, LLC.
 FLORIDA SOUTHEAST CONNECTION
 PIPELINE PROJECT
 Polk & Osceola Counties, Florida



Path: Y:\Projects\21040_EPL_Florida_Southeast_Connection\Working\20140422_USGS_Wetland_Waterbody\Map\USGS_Scale1000.mxd

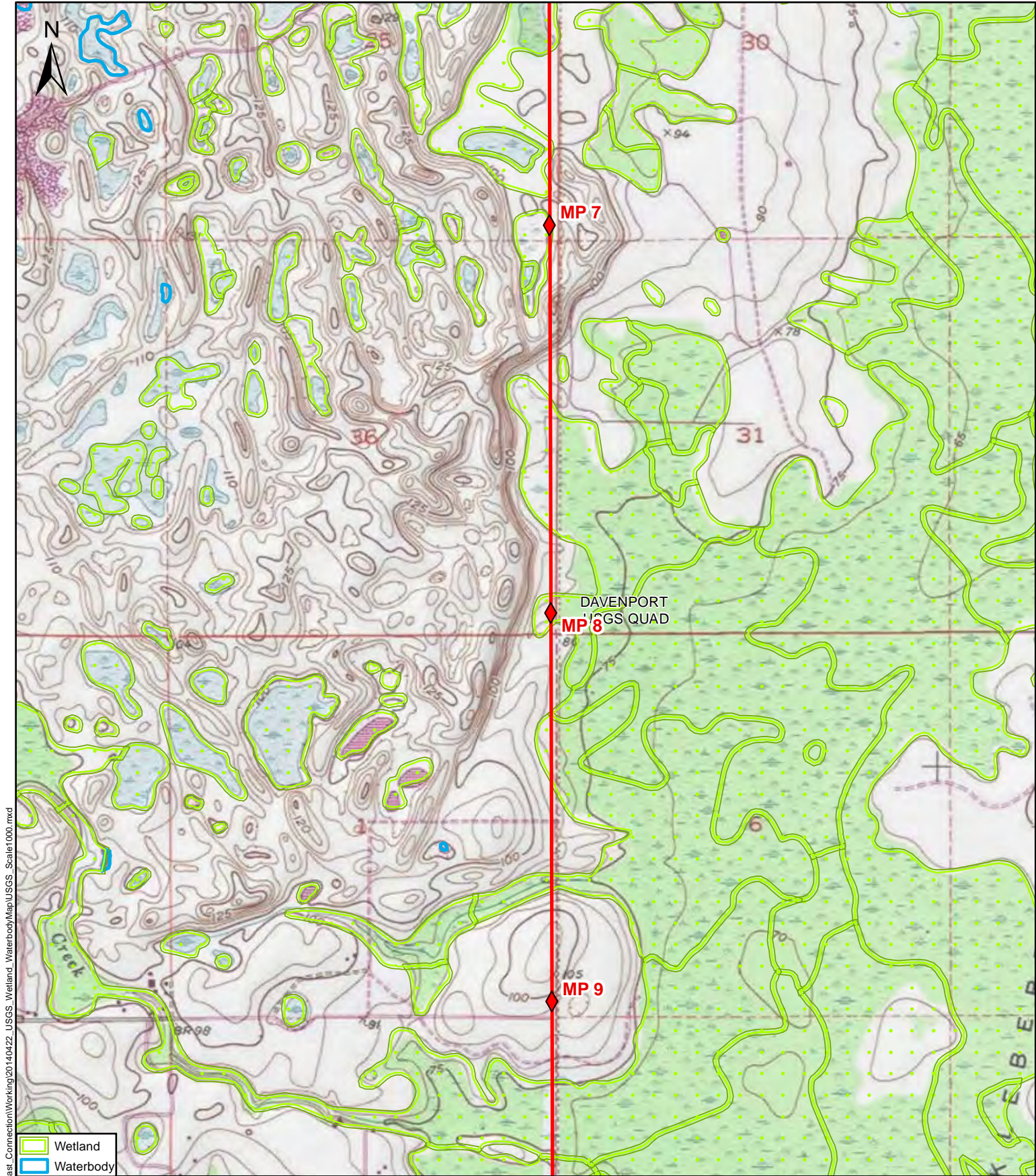
- Wetland
- Waterbody

DRAWN BY:	C.R.	DATE:	04/22/2014
REVIEWED BY:	M.B.	DATE:	04/22/2014
APPROVED BY:	R.G.	DATE:	04/22/2014
SCALE:	1" = 2,000"	SHEET:	2 OF 40
<div style="display: flex; justify-content: space-between; width: 100%;"> 0 2,000 4,000 </div> <div style="text-align: center; margin-top: 5px;"> </div>			
Feet			
A	04/22/2014	ISSUED FOR REVIEW	



USGS WETLAND AND WATERBODY MAPS

FLORIDA SOUTHEAST CONNECTION, LLC.
 FLORIDA SOUTHEAST CONNECTION
 PIPELINE PROJECT
 Polk County, Florida



Path: Y:\Projects\21040_EPL_Florida_Southeast_Connection\Working\20140422_USGS_Wetland_Waterbody\Map\USGS_Scale1000.mxd

- Wetland
- Waterbody

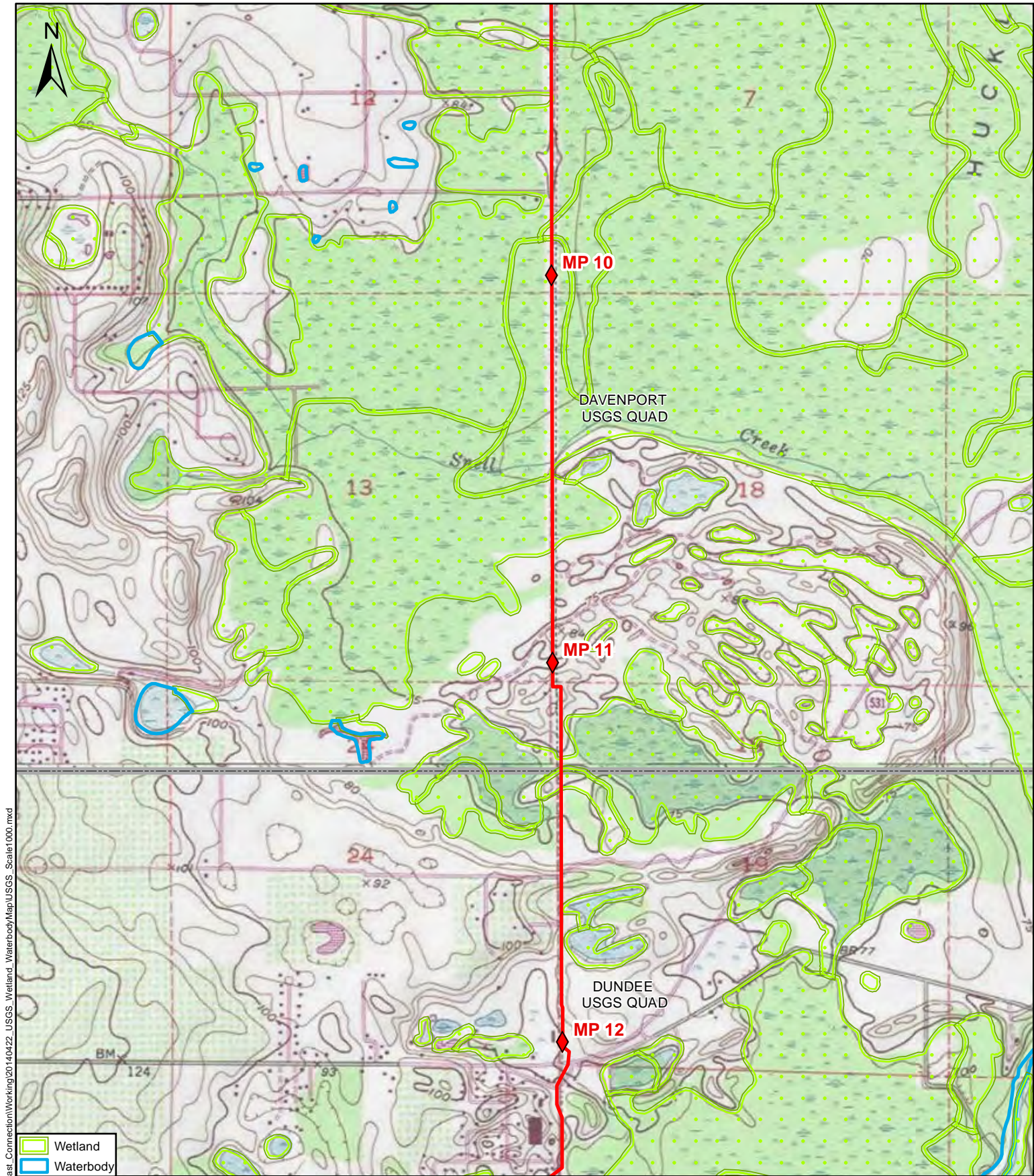
DRAWN BY:	C.R.	DATE:	04/22/2014
REVIEWED BY:	M.B.	DATE:	04/22/2014
APPROVED BY:	R.G.	DATE:	04/22/2014
SCALE:	1" = 2,000"	SHEET:	3 OF 40
<div style="display: flex; justify-content: space-between; align-items: center;"> 0 2,000 4,000 </div> <div style="display: flex; justify-content: center; align-items: center; margin-top: 5px;"> <div style="width: 100%; border-bottom: 1px solid black; position: relative;"> 0 4,000 </div> </div> <p style="text-align: center; margin-top: 5px;">Feet</p>			
A	04/22/2014	ISSUED FOR REVIEW	



USGS WETLAND AND WATERBODY MAPS

FLORIDA SOUTHEAST CONNECTION, LLC.
FLORIDA SOUTHEAST CONNECTION
PIPELINE PROJECT

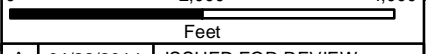
Polk County, Florida



Path: Y:\Projects\21040_EPL_Florida_Southeast_Connection\Working\20140422_USGS_Wetland_Waterbody\Map\USGS_Scale1000.mxd

- Wetland
- Waterbody

DRAWN BY:	C.R.	DATE:	04/22/2014
REVIEWED BY:	M.B.	DATE:	04/22/2014
APPROVED BY:	R.G.	DATE:	04/22/2014
SCALE:	1" = 2,000"	SHEET:	4 OF 40



A	04/22/2014	ISSUED FOR REVIEW

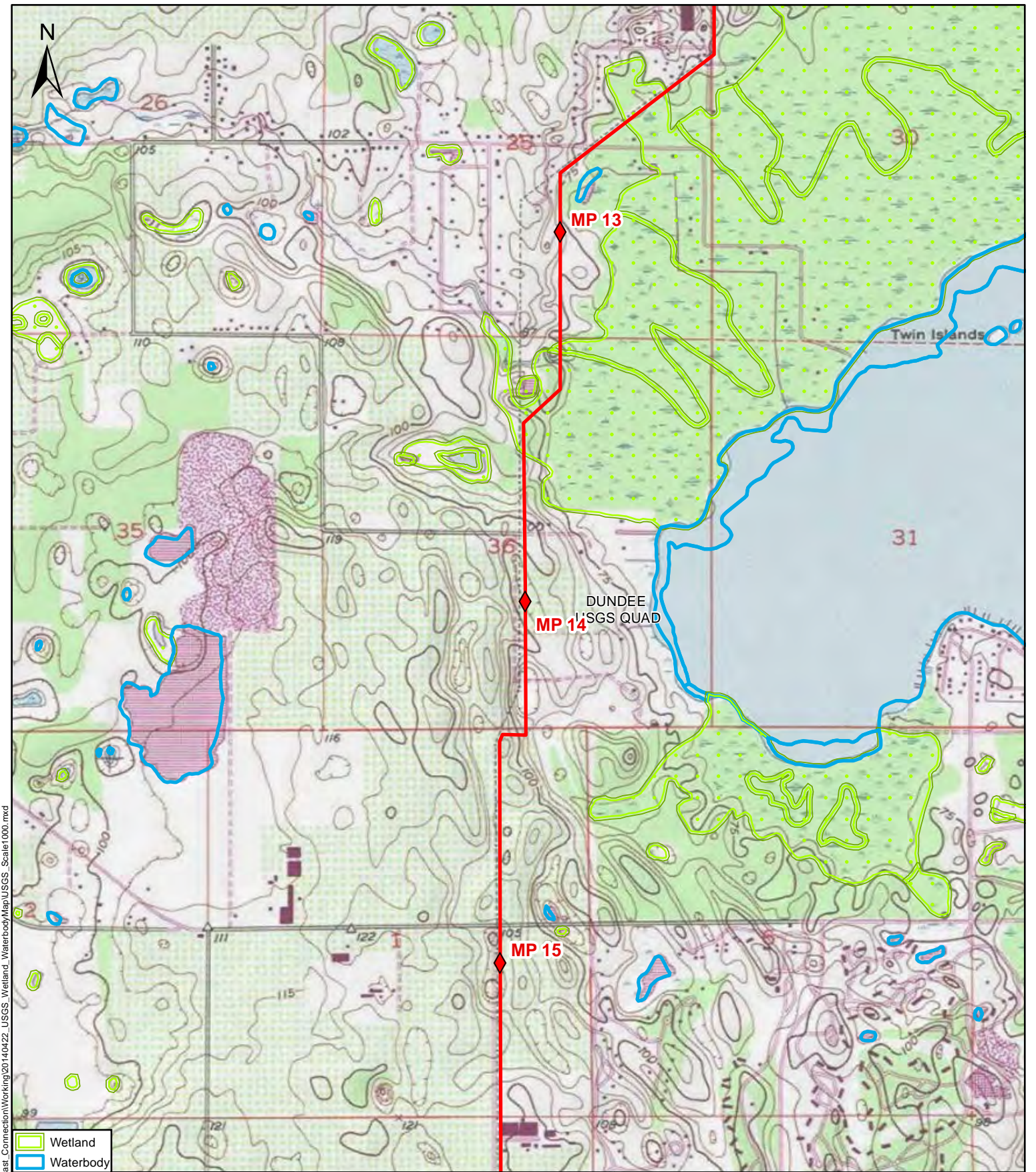


USGS WETLAND AND WATERBODY MAPS

FLORIDA SOUTHEAST CONNECTION, LLC.
 FLORIDA SOUTHEAST CONNECTION
 PIPELINE PROJECT

Polk County, Florida

DRAWING NO: 21040-510-GNW-21582	REV. A
---------------------------------	--------



DRAWN BY:	C.R.	DATE:	04/22/2014
REVIEWED BY:	M.B.	DATE:	04/22/2014
APPROVED BY:	R.G.	DATE:	04/22/2014
SCALE:	1" = 2,000"	SHEET:	5 OF 40
A	04/22/2014	ISSUED FOR REVIEW	

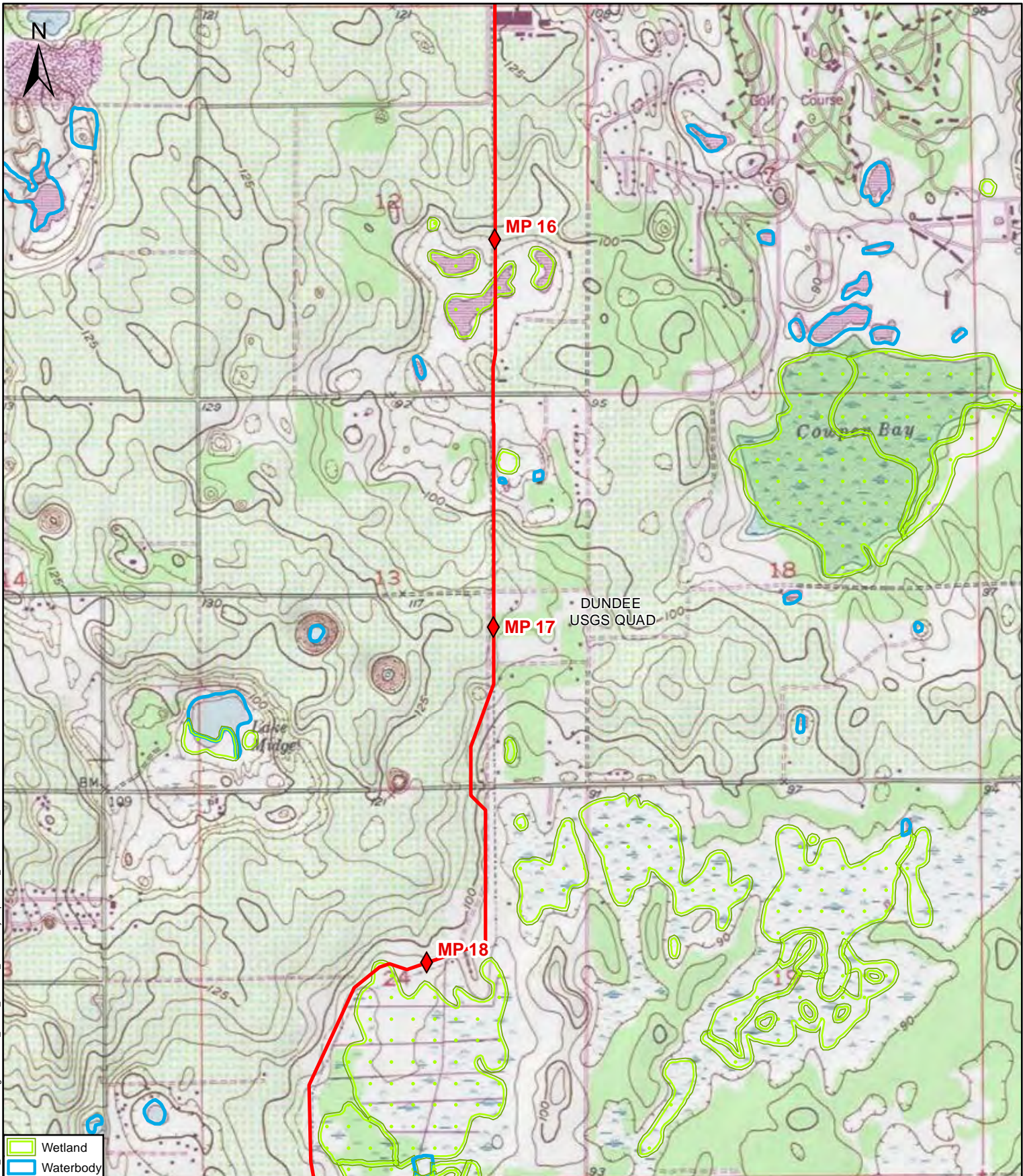


USGS WETLAND AND WATERBODY MAPS

FLORIDA SOUTHEAST CONNECTION, LLC.
 FLORIDA SOUTHEAST CONNECTION
 PIPELINE PROJECT
 Polk County, Florida

DRAWING NO:	21040-510-GNW-21583	REV.	A
-------------	---------------------	------	---

Path: Y:\Projects\21040_EPL_Florida_Southeast_Connection\Working\20140422_USGS_Wetland_Waterbody\Map\USGS_Scale1000.mxd



DRAWN BY:	C.R.	DATE:	04/22/2014
REVIEWED BY:	M.B.	DATE:	04/22/2014
APPROVED BY:	R.G.	DATE:	04/22/2014
SCALE:	1" = 2,000"	SHEET:	6 OF 40
0 2,000 4,000			
Feet			
A	04/22/2014	ISSUED FOR REVIEW	

FLORIDA SOUTHEAST CONNECTION™

UniversalPegasus
INTERNATIONAL

USGS WETLAND AND WATERBODY MAPS

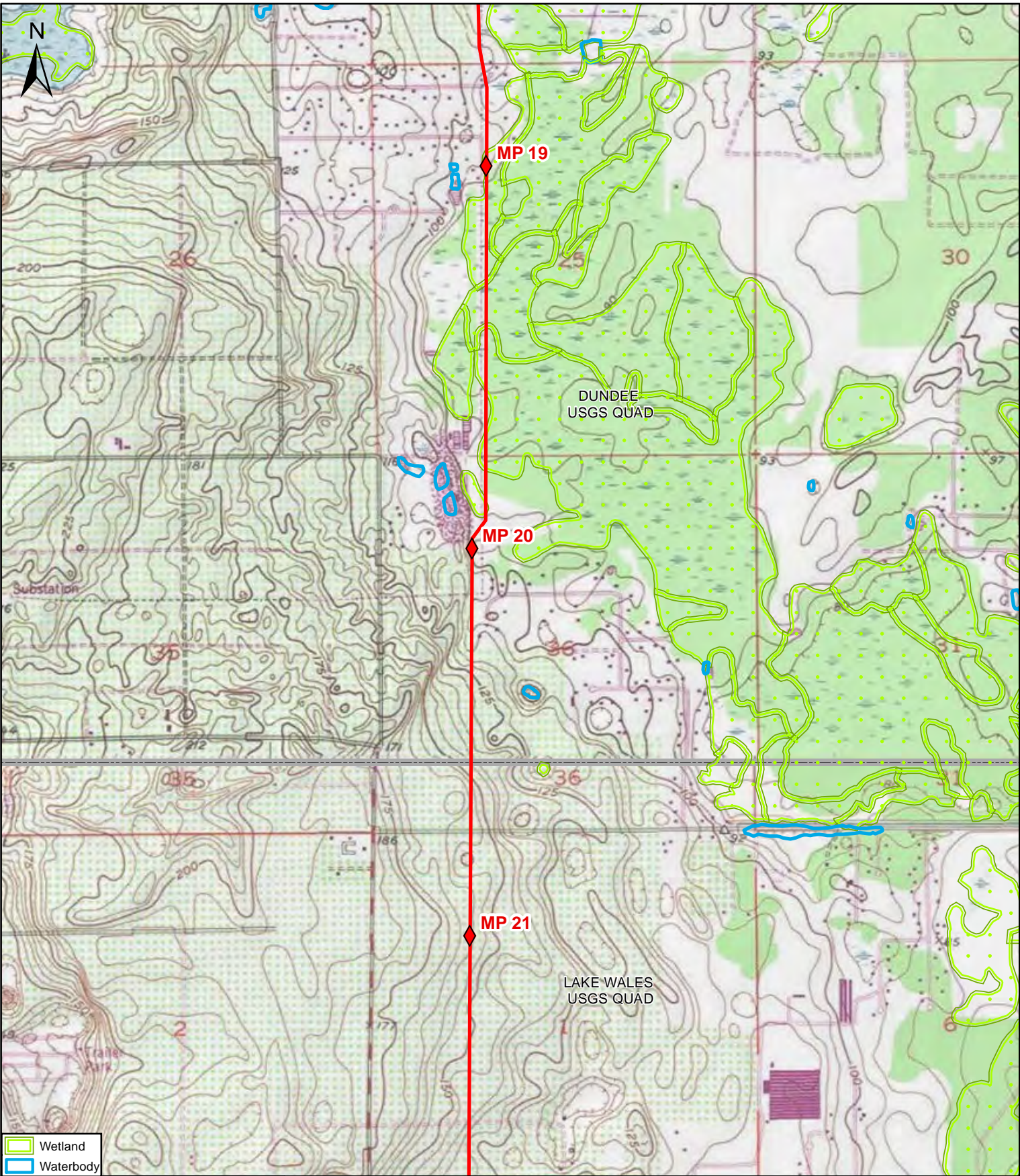
FLORIDA SOUTHEAST CONNECTION, LLC.
FLORIDA SOUTHEAST CONNECTION
PIPELINE PROJECT

Polk County, Florida

DRAWING NO: 21040-510-GNW-21584

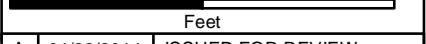
REV. A

Path: Y:\Projects\21040_EPL_Florida_Southeast_Connection\Working\20140422_USGS_Wetland_Map\USGS_Scales\1000.mxd



Wetland
 Waterbody

DRAWN BY:	C.R.	DATE:	04/22/2014
REVIEWED BY:	M.B.	DATE:	04/22/2014
APPROVED BY:	R.G.	DATE:	04/22/2014
SCALE:	1" = 2,000"	SHEET:	7 OF 40



A	04/22/2014	ISSUED FOR REVIEW



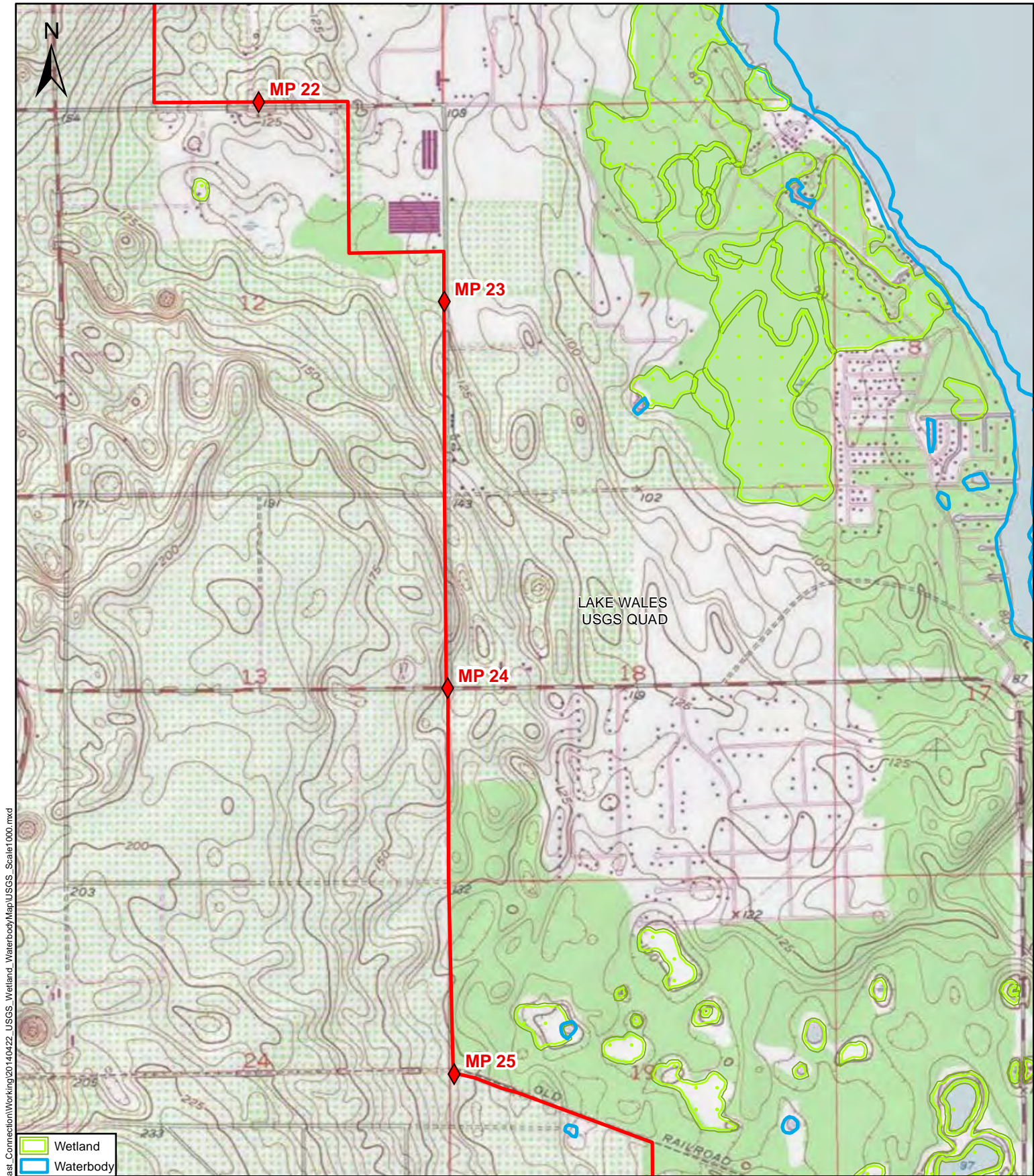
USGS WETLAND AND WATERBODY MAPS

FLORIDA SOUTHEAST CONNECTION, LLC.
 FLORIDA SOUTHEAST CONNECTION
 PIPELINE PROJECT

Polk County, Florida

DRAWING NO:	21040-510-GNW-21585	REV.	A
-------------	---------------------	------	---

Path: Y:\Projects\21040_EPL_Florida_Southeast_Connection\Working\20140422_USGS_Wetland_Waterbody\Map\USGS_Scale1000.mxd

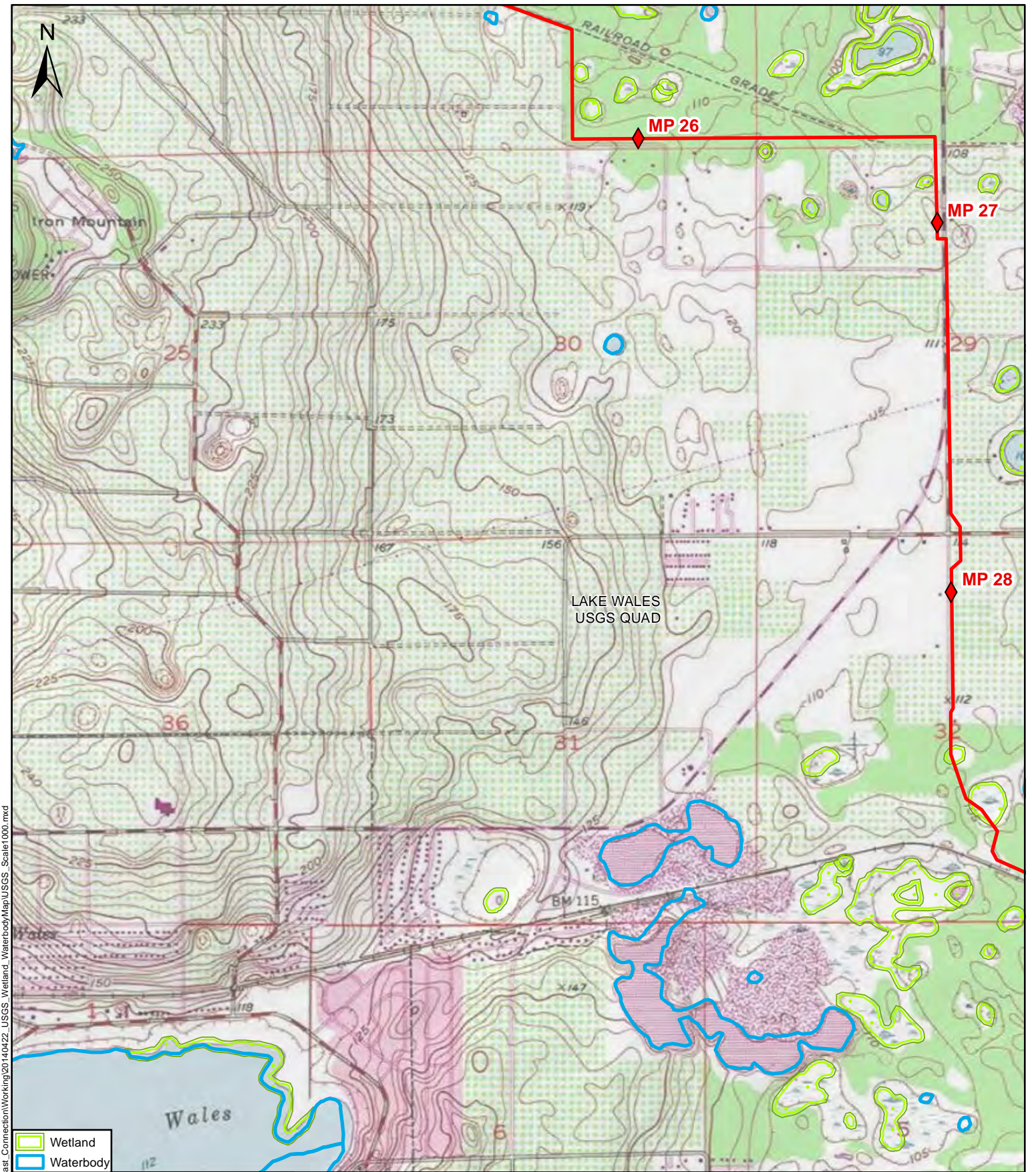


Path: Y:\Projects\21040_FPL_Florida_Southeast_Connection\Working\20140422_USGS_Wetland_Waterbody\Map\USGS_Scale1000.mxd

DRAWN BY: C.R.		DATE: 04/22/2014	
REVIEWED BY: M.B.		DATE: 04/22/2014	
APPROVED BY: R.G.		DATE: 04/22/2014	
SCALE: 1" = 2,000"		SHEET: 8 OF 40	
0 2,000 4,000			
Feet			
A	04/22/2014	ISSUED FOR REVIEW	



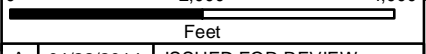
USGS WETLAND AND WATERBODY MAPS	
FLORIDA SOUTHEAST CONNECTION, LLC. FLORIDA SOUTHEAST CONNECTION PIPELINE PROJECT	
Polk County, Florida	
DRAWING NO: 21040-510-GNW-21586	REV. A



Path: Y:\Projects\21040_EPL_Florida_Southeast_Connection\Working\20140422_USGS_Wetland_Waterbody\Map\USGS_Scale1000.mxd

- Wetland
- Waterbody

DRAWN BY:	C.R.	DATE:	04/22/2014
REVIEWED BY:	M.B.	DATE:	04/22/2014
APPROVED BY:	R.G.	DATE:	04/22/2014
SCALE:	1" = 2,000"	SHEET:	9 OF 40



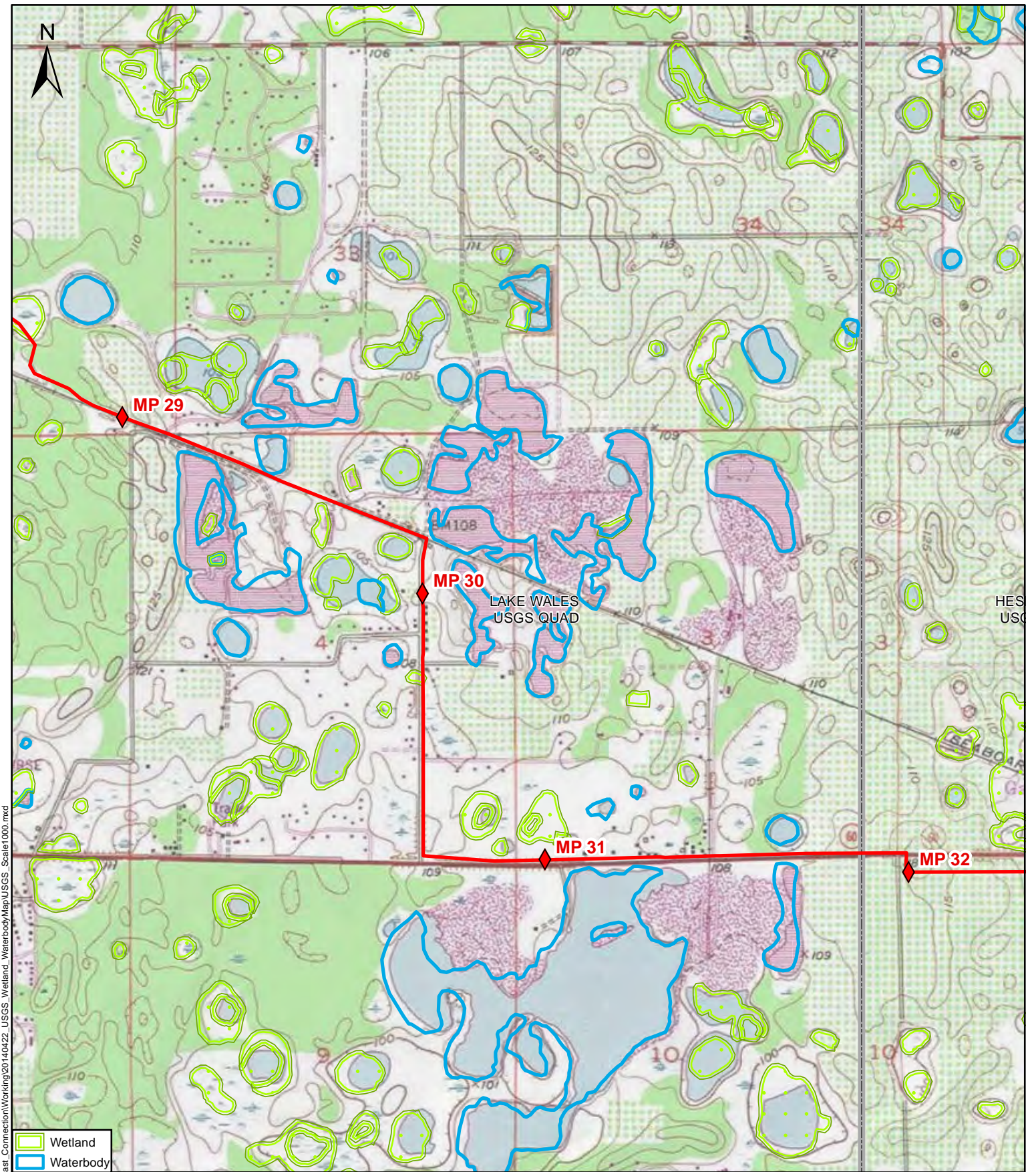
A	04/22/2014	ISSUED FOR REVIEW



USGS WETLAND AND WATERBODY MAPS

FLORIDA SOUTHEAST CONNECTION, LLC.
 FLORIDA SOUTHEAST CONNECTION
 PIPELINE PROJECT
 Polk County, Florida

DRAWING NO: 21040-510-GNW-21587	REV. A
---------------------------------	--------



Path: Y:\Projects\21040_EPL_Florida_Southeast_Connection\Working\20140422_USGS_Wetland_Waterbody\Map\USGS_Scale1000.mxd

- Wetland
- Waterbody

DRAWN BY:	C.R.	DATE:	04/22/2014
REVIEWED BY:	M.B.	DATE:	04/22/2014
APPROVED BY:	R.G.	DATE:	04/22/2014
SCALE:	1" = 2,000"	SHEET:	10 OF 40

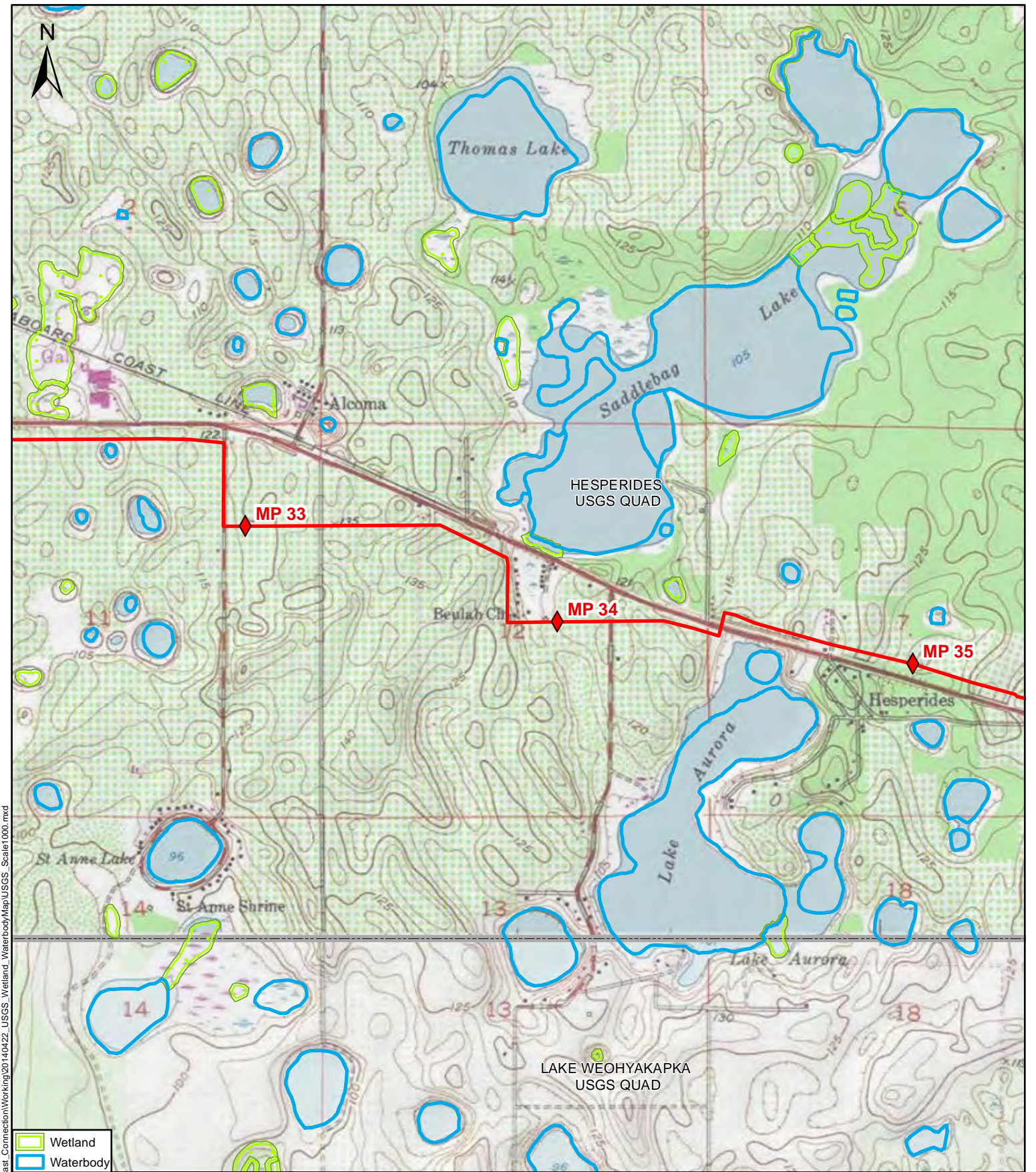
0 2,000 4,000	
Feet	
A	04/22/2014 ISSUED FOR REVIEW



USGS WETLAND AND WATERBODY MAPS

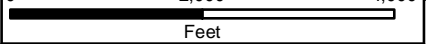
FLORIDA SOUTHEAST CONNECTION, LLC.
 FLORIDA SOUTHEAST CONNECTION
 PIPELINE PROJECT
 Polk County, Florida

DRAWING NO: 21040-510-GNW-21588	REV. A
---------------------------------	--------



- Wetland
- Waterbody

DRAWN BY:	C.R.	DATE:	04/22/2014
REVIEWED BY:	M.B.	DATE:	04/22/2014
APPROVED BY:	R.G.	DATE:	04/22/2014
SCALE:	1" = 2,000"	SHEET:	11 OF 40



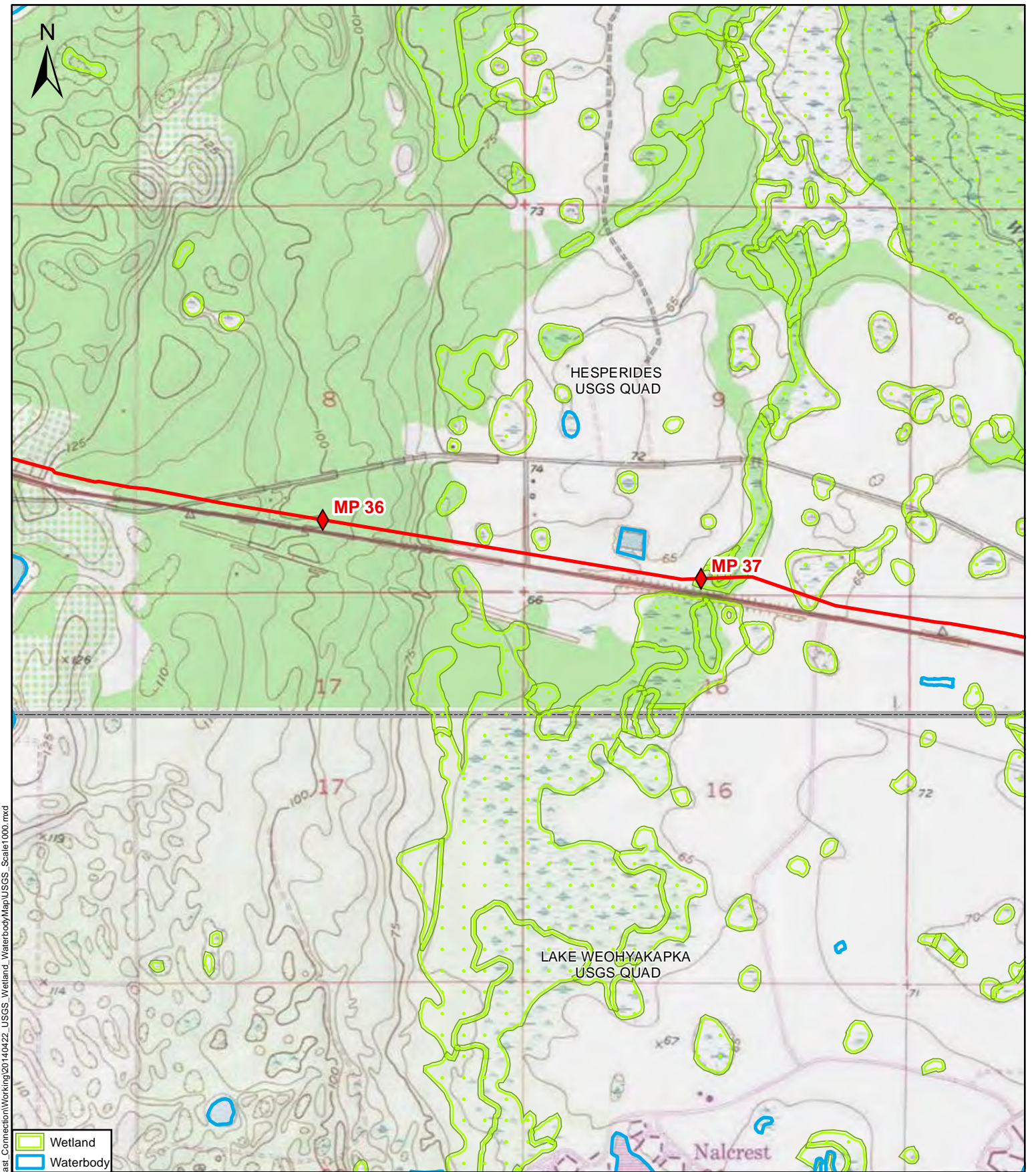
A	04/22/2014	ISSUED FOR REVIEW



USGS WETLAND AND WATERBODY MAPS

FLORIDA SOUTHEAST CONNECTION, LLC.
 FLORIDA SOUTHEAST CONNECTION
 PIPELINE PROJECT
 Polk County, Florida

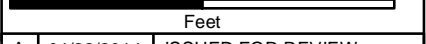
Path: Y:\Projects\21040_EPL_Florida_Southeast_Connection\Working\20140422_USGS_Wetland_Waterbody\Map\USGS_Scale1000.mxd



Path: Y:\Projects\21040_EPL_Florida_Southeast_Connection\Working\20140422_USGS_Wetland_Waterbody\Map\USGS_Scale1000.mxd

- Wetland
- Waterbody

DRAWN BY:	C.R.	DATE:	04/22/2014
REVIEWED BY:	M.B.	DATE:	04/22/2014
APPROVED BY:	R.G.	DATE:	04/22/2014
SCALE:	1" = 2,000"	SHEET:	12 OF 40



A	04/22/2014	ISSUED FOR REVIEW

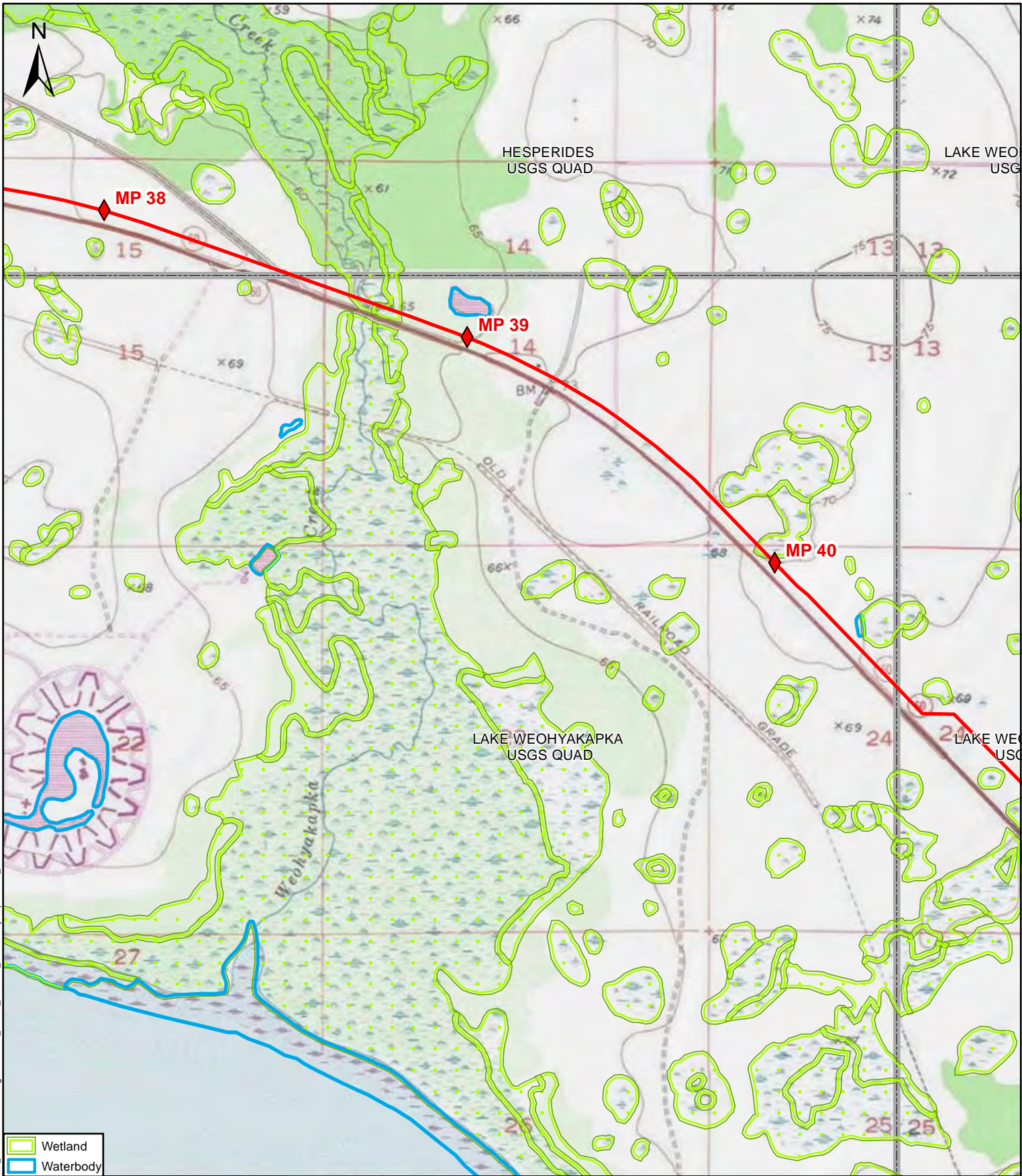


USGS WETLAND AND WATERBODY MAPS

FLORIDA SOUTHEAST CONNECTION, LLC.
FLORIDA SOUTHEAST CONNECTION
PIPELINE PROJECT

Polk County, Florida

DRAWING NO: 21040-510-GNW-21590	REV. A
---------------------------------	--------



- Wetland
- Waterbody

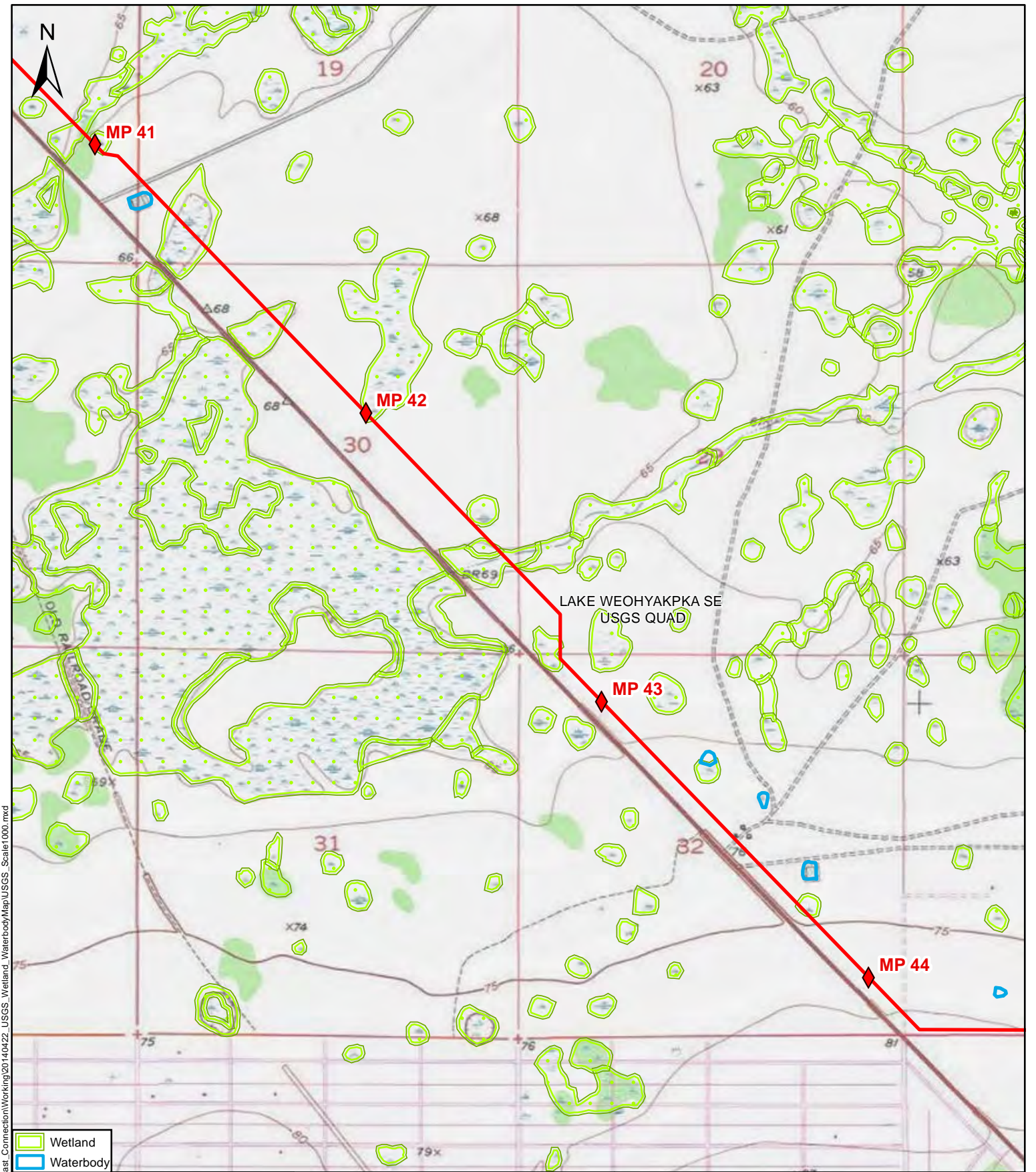
DRAWN BY:	C.R.	DATE:	04/22/2014
REVIEWED BY:	M.B.	DATE:	04/22/2014
APPROVED BY:	R.G.	DATE:	04/22/2014
SCALE:	1" = 2,000"	SHEET:	13 OF 40
<div style="display: flex; justify-content: space-between; width: 100%;"> 0 2,000 4,000 </div> <hr style="width: 100%;"/> <div style="display: flex; justify-content: space-between; width: 100%;"> 0 2,000 4,000 </div> <p style="text-align: center; margin-top: 5px;">Feet</p>			
A	04/22/2014	ISSUED FOR REVIEW	



USGS WETLAND AND WATERBODY MAPS

FLORIDA SOUTHEAST CONNECTION, LLC.
 FLORIDA SOUTHEAST CONNECTION
 PIPELINE PROJECT
 Polk County, Florida

Path: Y:\Projects\21040_EPL_Florida_Southeast_Connection\Working\20140422_USGS_Wetland_Waterbody\Map\USGS_Scale1000.mxd



Path: Y:\Projects\21040_EPL_Florida_Southeast_Connection\Working\20140422_USGS_Wetland_Map\USGS_Scale1000.mxd

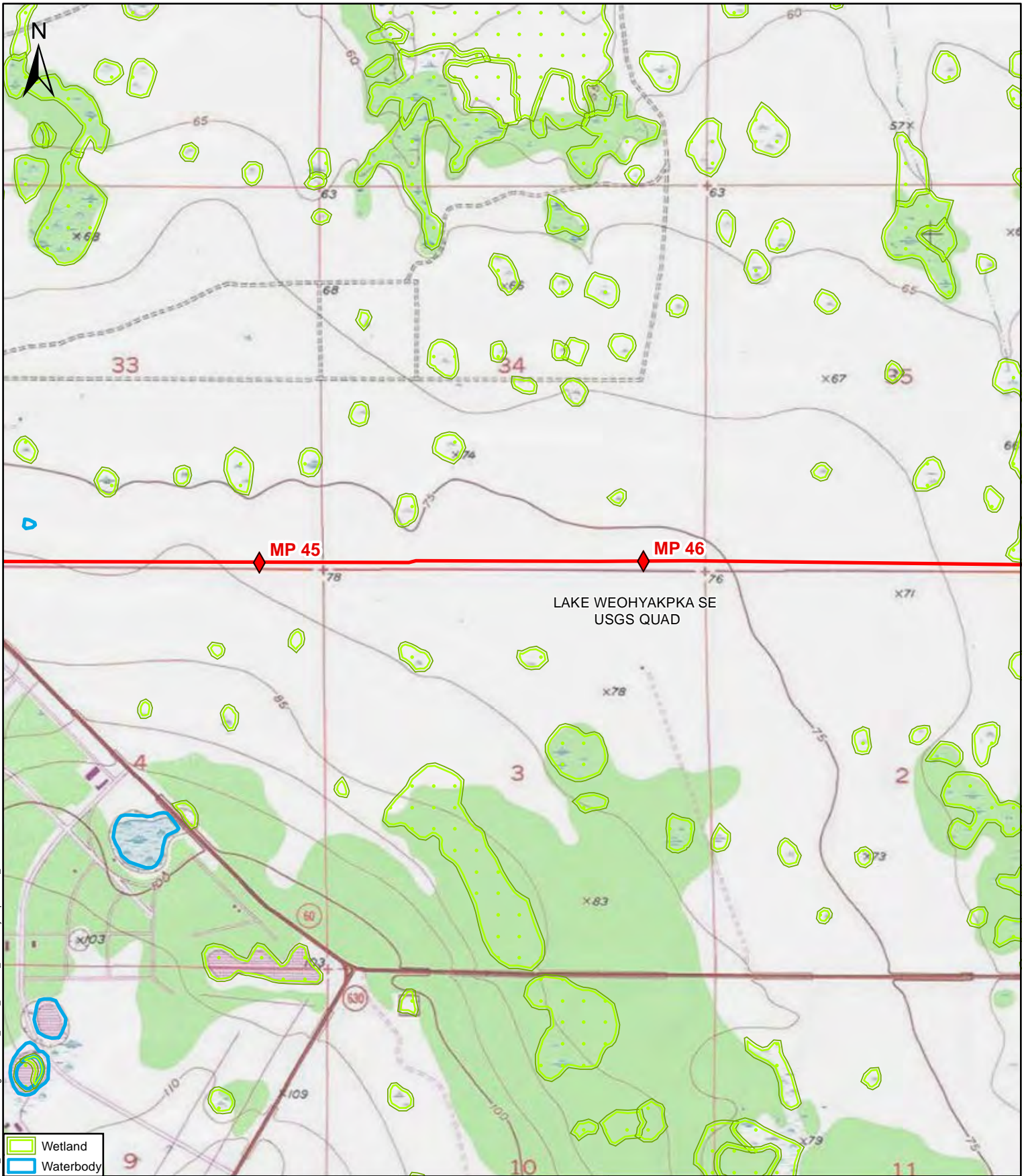
- Wetland
- Waterbody

DRAWN BY:	C.R.	DATE:	04/22/2014
REVIEWED BY:	M.B.	DATE:	04/22/2014
APPROVED BY:	R.G.	DATE:	04/22/2014
SCALE:	1" = 2,000"	SHEET:	14 OF 40
<div style="display: flex; justify-content: space-between; width: 100%;"> 0 2,000 4,000 </div> <div style="text-align: center; margin-top: 5px;"> </div> <p style="text-align: center; margin-top: 5px;">Feet</p>			
A	04/22/2014	ISSUED FOR REVIEW	



USGS WETLAND AND WATERBODY MAPS

FLORIDA SOUTHEAST CONNECTION, LLC.
 FLORIDA SOUTHEAST CONNECTION
 PIPELINE PROJECT
 Polk County, Florida



DRAWN BY:	C.R.	DATE:	04/22/2014
REVIEWED BY:	M.B.	DATE:	04/22/2014
APPROVED BY:	R.G.	DATE:	04/22/2014
SCALE:	1" = 2,000"	SHEET:	15 OF 40
A	04/22/2014	ISSUED FOR REVIEW	

FLORIDA SOUTHEAST CONNECTION™

UniversalPegasus
INTERNATIONAL

USGS WETLAND AND WATERBODY MAPS

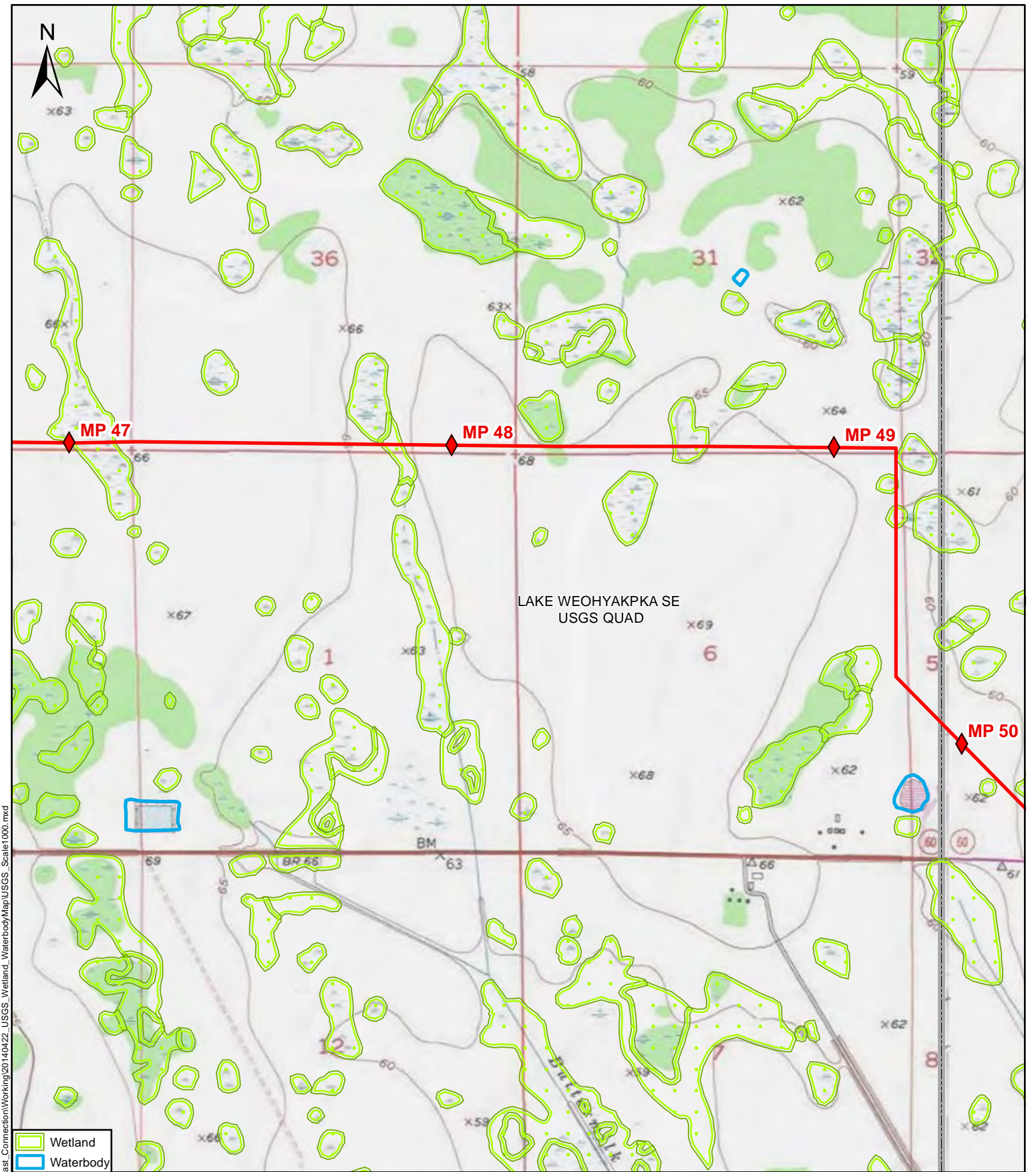
FLORIDA SOUTHEAST CONNECTION, LLC.
FLORIDA SOUTHEAST CONNECTION
PIPELINE PROJECT

Polk County, Florida

DRAWING NO: 21040-510-GNW-21593

REV. A

Path: Y:\Projects\21040_EPL_Florida_Southeast_Connection\Working\20140422_USGS_Wetland_Waterbody\Map\USGS_Scale1000.mxd



- Wetland
- Waterbody

DRAWN BY:	C.R.	DATE:	04/22/2014
REVIEWED BY:	M.B.	DATE:	04/22/2014
APPROVED BY:	R.G.	DATE:	04/22/2014
SCALE:	1" = 2,000"	SHEET:	16 OF 40

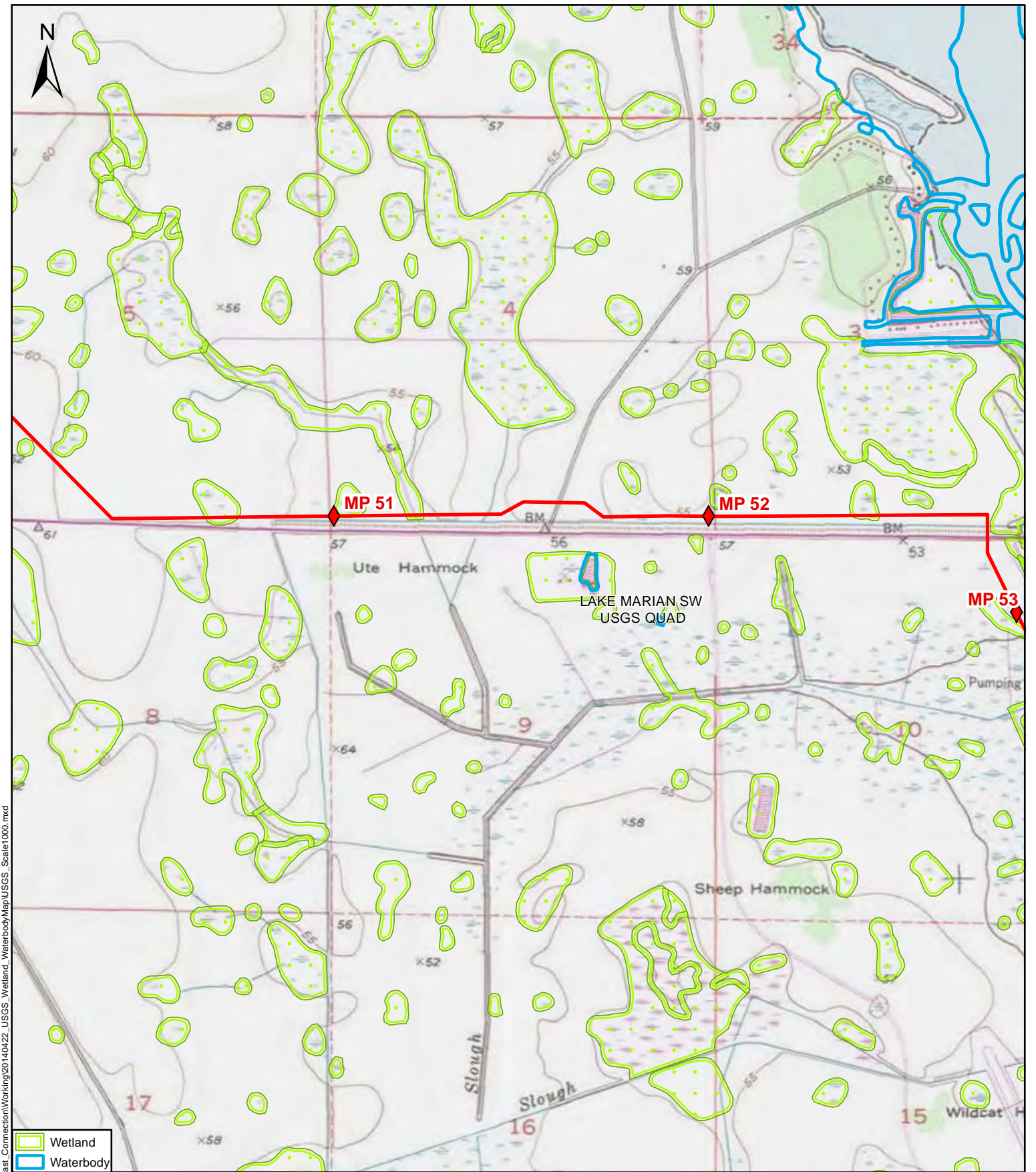
0 2,000 4,000	
Feet	
A	04/22/2014 ISSUED FOR REVIEW



USGS WETLAND AND WATERBODY MAPS

FLORIDA SOUTHEAST CONNECTION, LLC.
 FLORIDA SOUTHEAST CONNECTION
 PIPELINE PROJECT
 Polk County, Florida

Path: Y:\Projects\21040_EPL_Florida_Southeast_Connection\Working\20140422_USGS_Wetland_Waterbody\Map\USGS_Scale1000.mxd

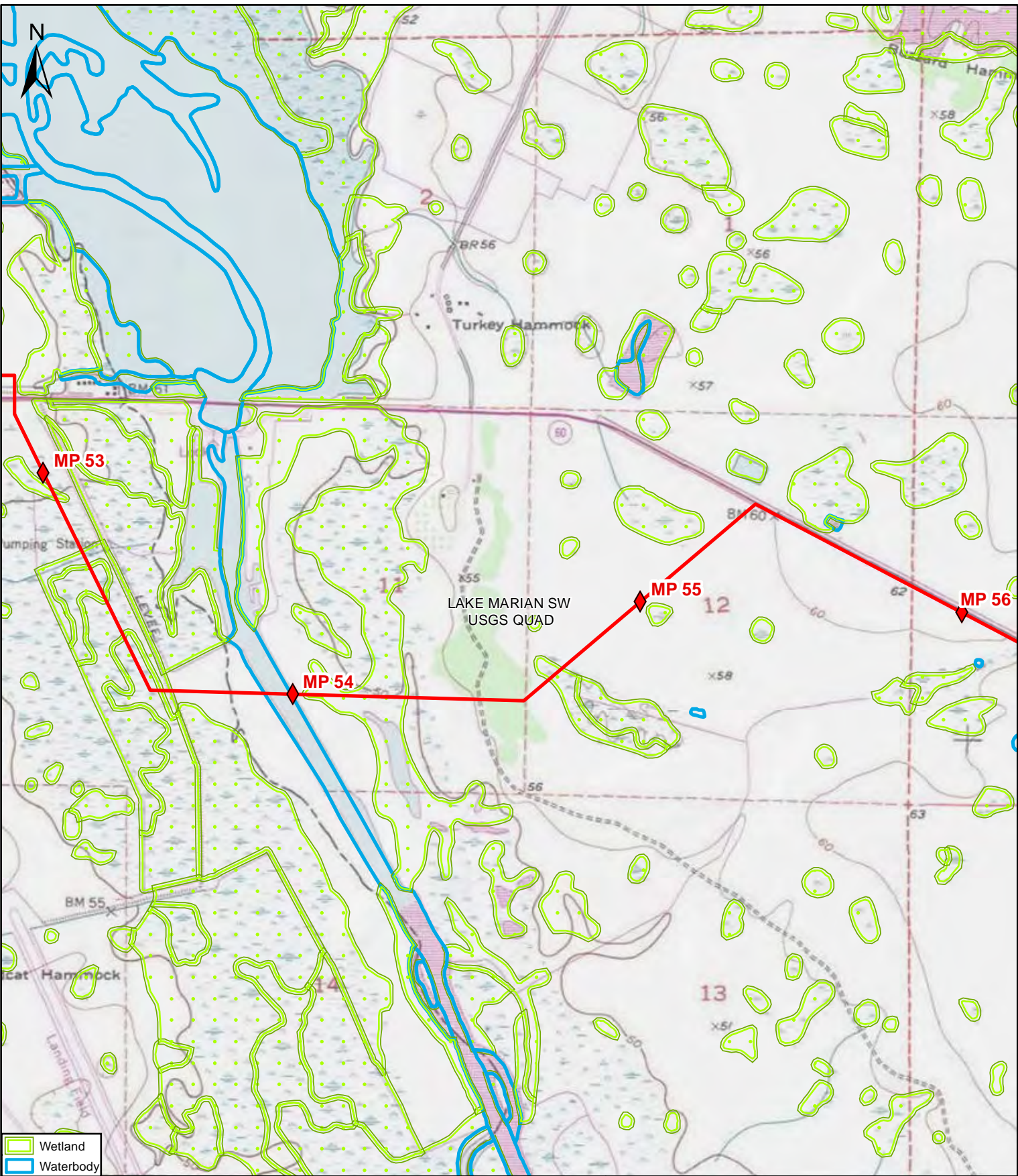


Path: Y:\Projects\21040_EPL_Florida_Southeast_Connection\Working\20140422_USGS_Wetland_Waterbody\Map\USGS_Scale1000.mxd

DRAWN BY:	C.R.	DATE:	04/22/2014
REVIEWED BY:	M.B.	DATE:	04/22/2014
APPROVED BY:	R.G.	DATE:	04/22/2014
SCALE:	1" = 2,000"	SHEET:	17 OF 40
A	04/22/2014	ISSUED FOR REVIEW	

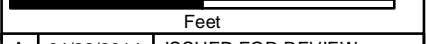


USGS WETLAND AND WATERBODY MAPS	
FLORIDA SOUTHEAST CONNECTION, LLC. FLORIDA SOUTHEAST CONNECTION PIPELINE PROJECT Polk & Osceola Counties, Florida	
DRAWING NO:	21040-510-GNW-21595
REV.	A



Wetland
 Waterbody

DRAWN BY:	C.R.	DATE:	04/22/2014
REVIEWED BY:	M.B.	DATE:	04/22/2014
APPROVED BY:	R.G.	DATE:	04/22/2014
SCALE:	1" = 2,000"	SHEET:	18 OF 40



A	04/22/2014	ISSUED FOR REVIEW
---	------------	-------------------

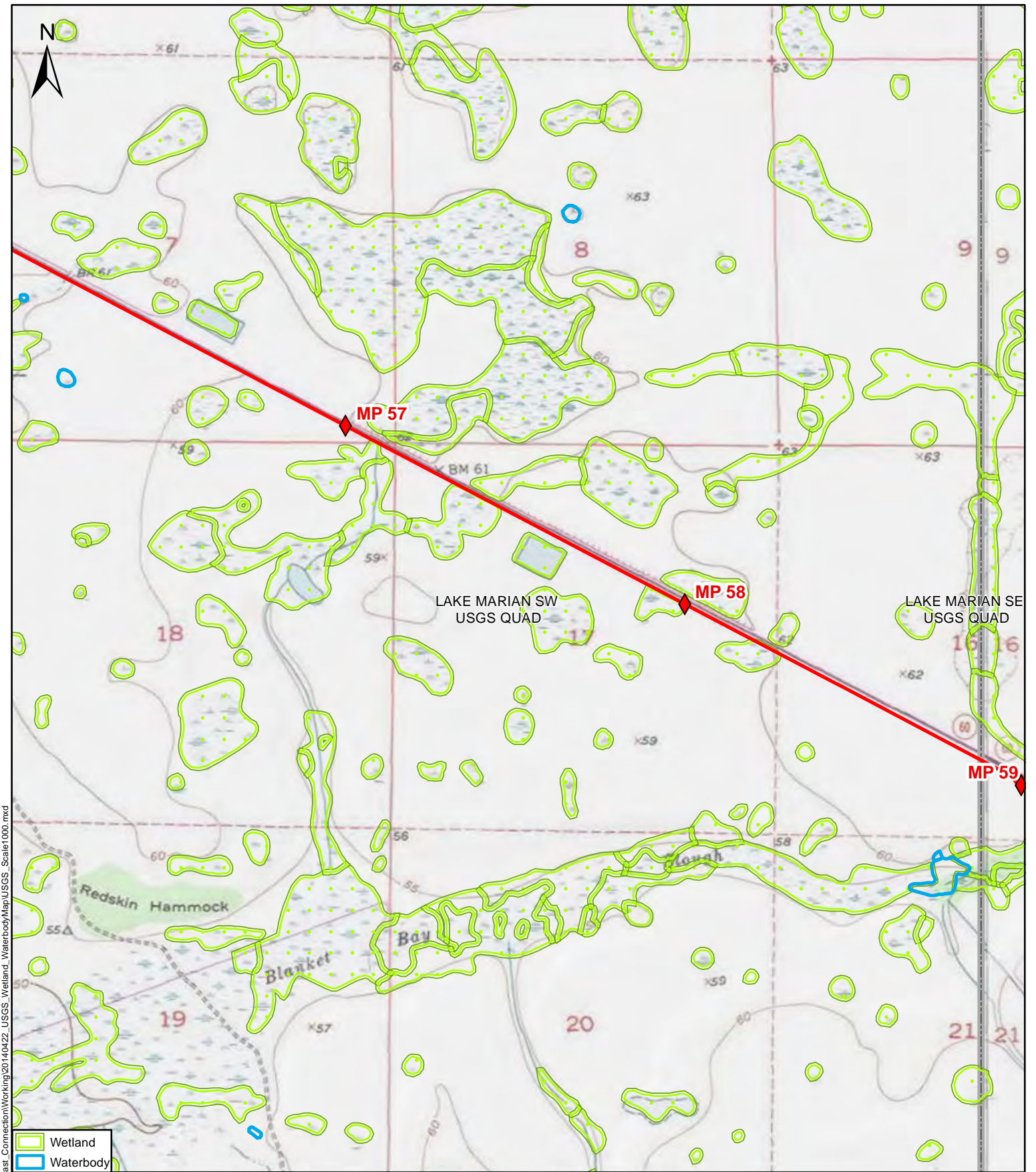


USGS WETLAND AND WATERBODY MAPS

FLORIDA SOUTHEAST CONNECTION, LLC.
 FLORIDA SOUTHEAST CONNECTION
 PIPELINE PROJECT
 Polk & Osceola Counties, Florida

DRAWING NO:	21040-510-GNW-21596	REV. A
-------------	---------------------	--------

Path: Y:\Projects\21040_EPL_Florida_Southeast_Connection\Working\20140422_USGS_Wetland_Waterbody\Map\USGS_Scale1000.mxd



Path: Y:\Projects\21040_EPL_Florida_Southeast_Connection\Working\20140422_USGS_Wetland_Waterbody\Map\USGS_Scale1000.mxd

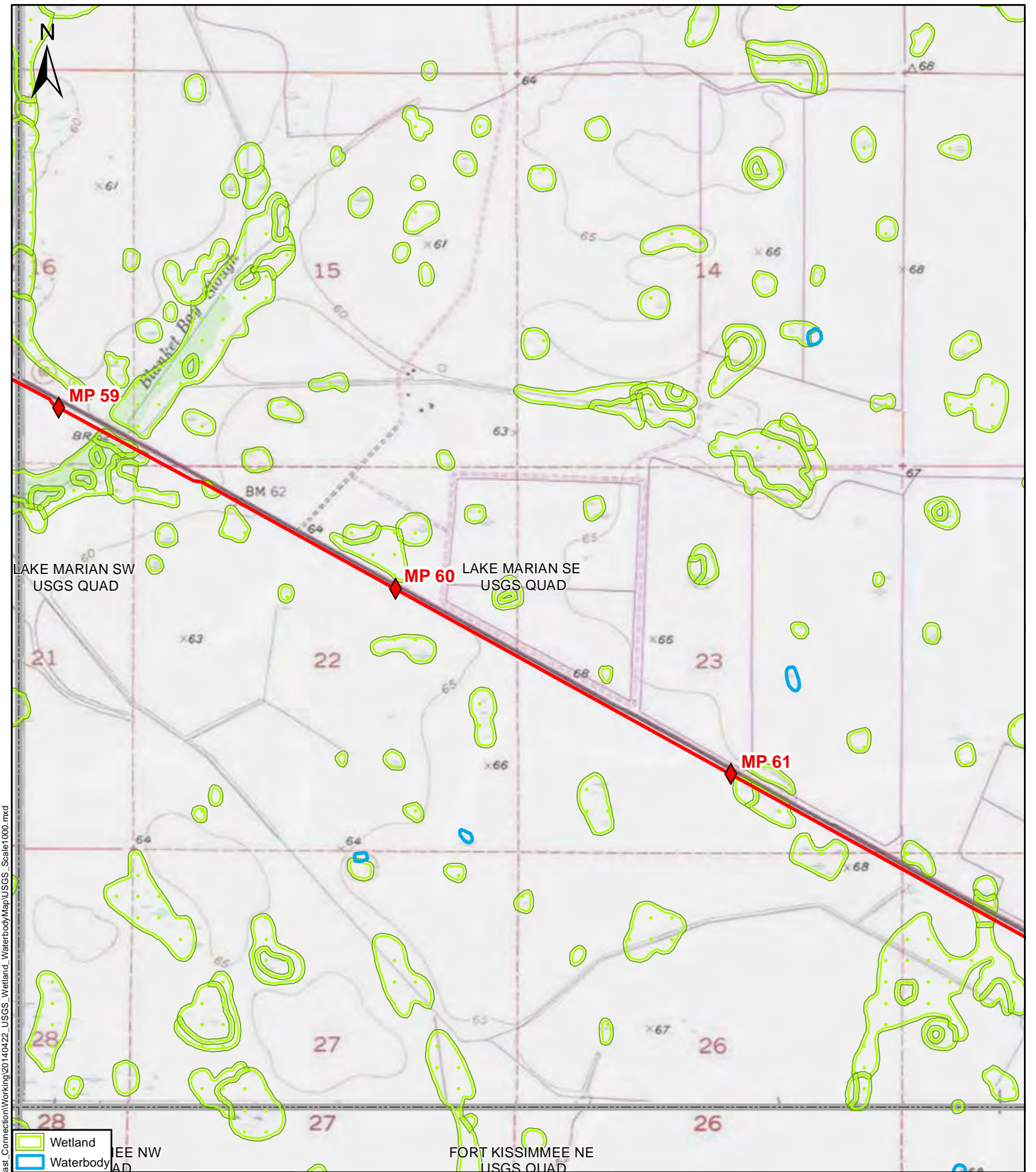
- Wetland
- Waterbody

DRAWN BY:	C.R.	DATE:	04/22/2014
REVIEWED BY:	M.B.	DATE:	04/22/2014
APPROVED BY:	R.G.	DATE:	04/22/2014
SCALE:	1" = 2,000"	SHEET:	19 OF 40
<div style="display: flex; justify-content: space-between; width: 100%;"> 0 2,000 4,000 </div> <div style="text-align: center; margin-top: 5px;"> <p>Feet</p> </div>			
A	04/22/2014	ISSUED FOR REVIEW	



USGS WETLAND AND WATERBODY MAPS

FLORIDA SOUTHEAST CONNECTION, LLC.
 FLORIDA SOUTHEAST CONNECTION
 PIPELINE PROJECT
 Osceola County, Florida



- Wetland
- Waterbody

DRAWN BY:	C.R.	DATE:	04/22/2014
REVIEWED BY:	M.B.	DATE:	04/22/2014
APPROVED BY:	R.G.	DATE:	04/22/2014
SCALE:	1" = 2,000"	SHEET:	20 OF 40
A	04/22/2014	ISSUED FOR REVIEW	



USGS WETLAND AND WATERBODY MAPS

FLORIDA SOUTHEAST CONNECTION, LLC.
 FLORIDA SOUTHEAST CONNECTION
 PIPELINE PROJECT
 Osceola County, Florida

Path: Y:\Projects\21040_EPL_Florida_Southeast_Connection\Working\20140422_USGS_Wetland_Waterbody\Map\USGS_Scale1000.mxd